




Test yourself: recurrent right groin lump

Henry Chi Kit Kwok¹  · Mary Susan Brady² · Narasimhan P. Agaram³ · Sinchun Hwang¹

Received: 13 October 2021 / Revised: 17 November 2021 / Accepted: 19 November 2021 / Published online: 25 November 2021
© ISS 2021

Question

A 67-year-old woman presented with a recurrent mass in her right groin. The mass was excised previously at an outside institution four years ago (Figs. 1, 2, and 3).

The diagnosis can be found at <https://doi.org/10.1007/s00256-021-03964-9>.

✉ Henry Chi Kit Kwok
kwokh@mskcc.org

¹ Department of Radiology, Memorial Sloan Kettering Cancer Center, 1275 York Ave, New York, NY 10065, USA

² Department of Surgery, Memorial Sloan Kettering Cancer Center, New York, NY, USA

³ Department of Pathology, Memorial Sloan Kettering Cancer Center, New York, NY, USA

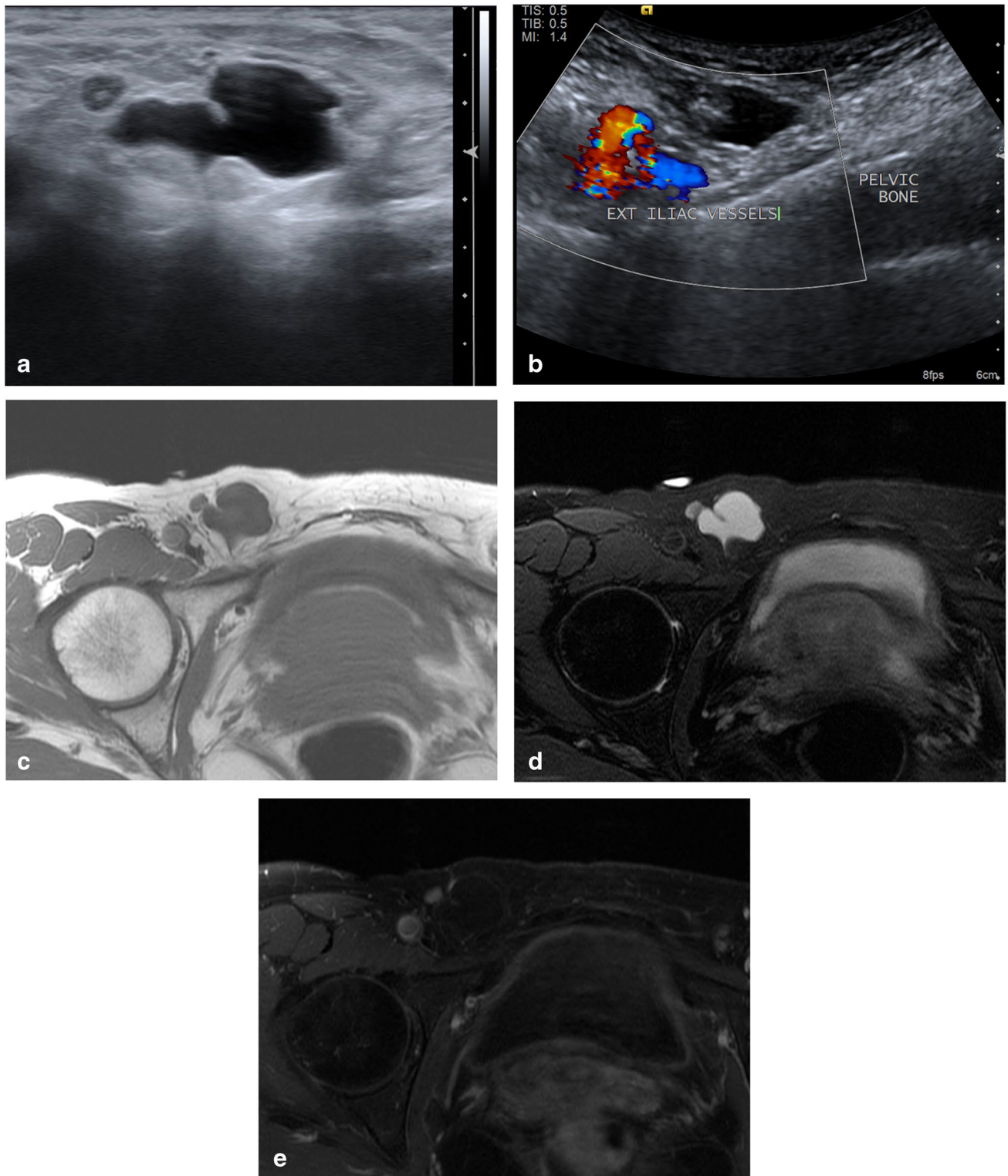


Fig. 1 Ultrasound and MRI at first presentation before initial resection. (a) Transverse gray-scale and (b) transverse color Doppler sonographic images of the right groin. (c) Axial T1, (d) axial T2 fat-saturated and (e) post-contrast axial T1 fat-saturated MR images of the pelvis

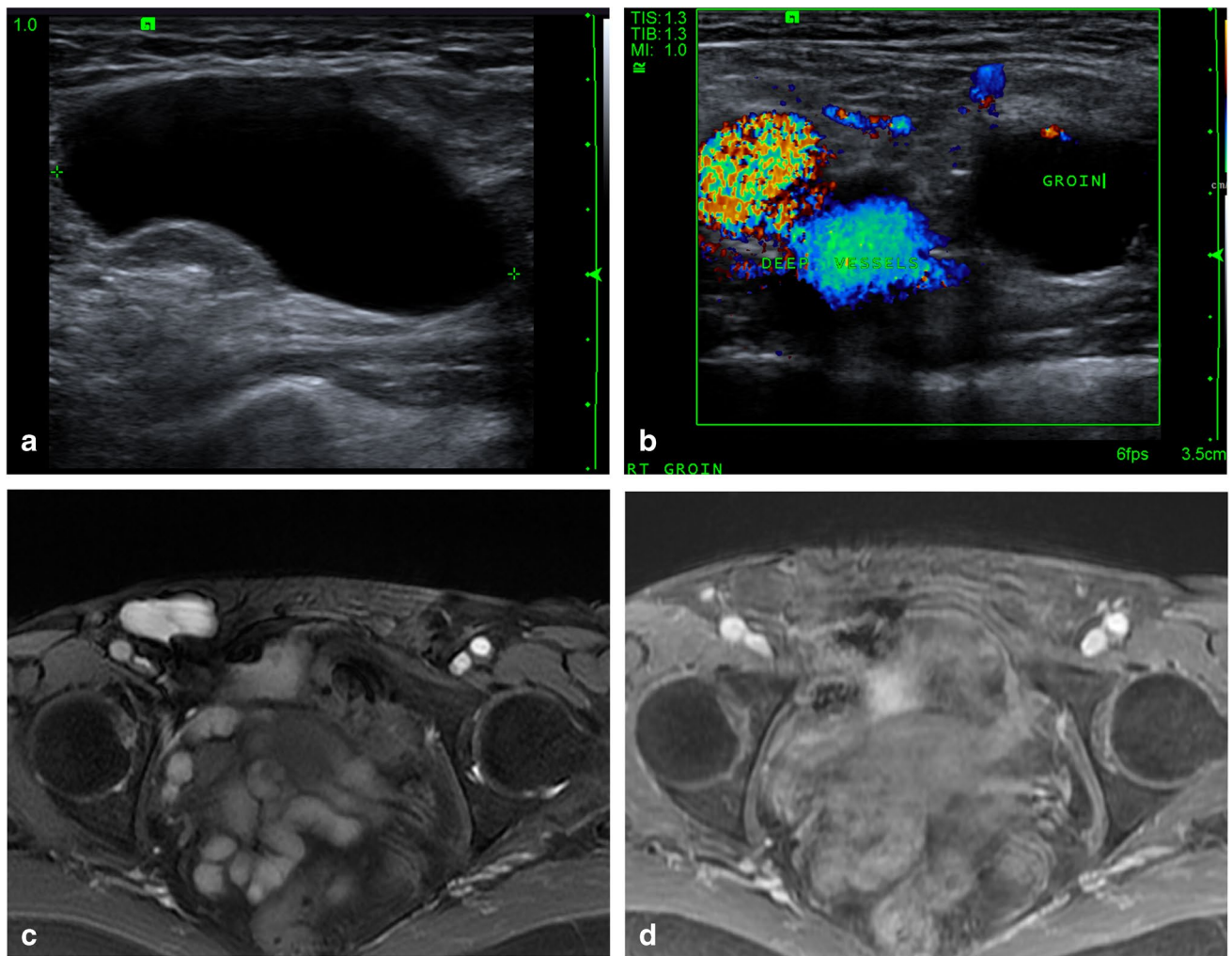


Fig. 2 Ultrasound and MRI four years after initial resection. (a) Transverse gray-scale and (b) transverse color Doppler sonographic images of the right groin. (c) Axial T2 fat-saturated and (d) post-contrast axial T1 fat-saturated MR images of the pelvis

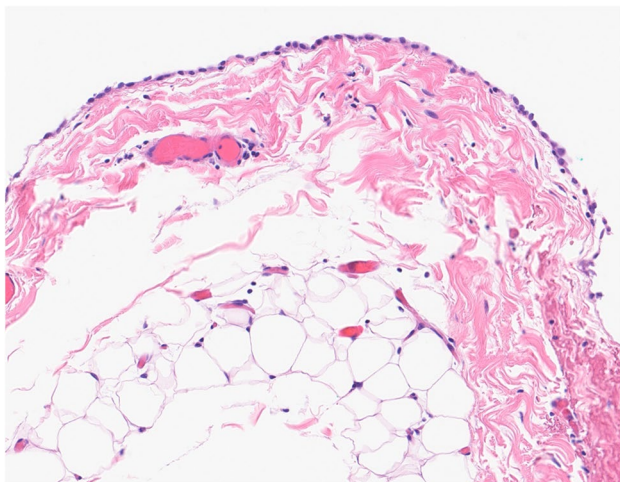


Fig. 3 Light microscopy images of a representative section of the excised mass (H&E stain, 400 \times)

Declarations

Institutional review board statement Approval from the Institutional Review Board was obtained and in keeping with the policies for a non-human subject research, institutional review board oversight was not required.

Informed consent Consent has been obtained from the patient for the use of their data and images in this case report.

Conflict of interest The authors declare that they have no conflict of interest

Publisher's note Springer Nature remains neutral with regard to jurisdictional claims in published maps and institutional affiliations.