



## Test Yourself Question: A 77-year-old female presented with a 3-week history of left thigh swelling and pain

Susan Hesni<sup>1</sup> · Davoud Khodatars<sup>1</sup> · Ramanan Rajakulasingam<sup>1</sup>  · Asif Saifuddin<sup>1</sup> · Paul O'Donnell<sup>1</sup>

Received: 1 September 2021 / Revised: 9 November 2021 / Accepted: 11 November 2021 / Published online: 30 November 2021  
© ISS 2021

### Question:

A 77-year-old female presented with a 3-week history of left thigh swelling and pain. There was no history of trauma (Figs. 1 and 2).

**Publisher's note** Springer Nature remains neutral with regard to jurisdictional claims in published maps and institutional affiliations.

---

The diagnosis can be found at doi: <https://doi.org/10.1007/s00256-021-03960-z>

---

✉ Ramanan Rajakulasingam  
ramanan.rajakulasingam1@nhs.net

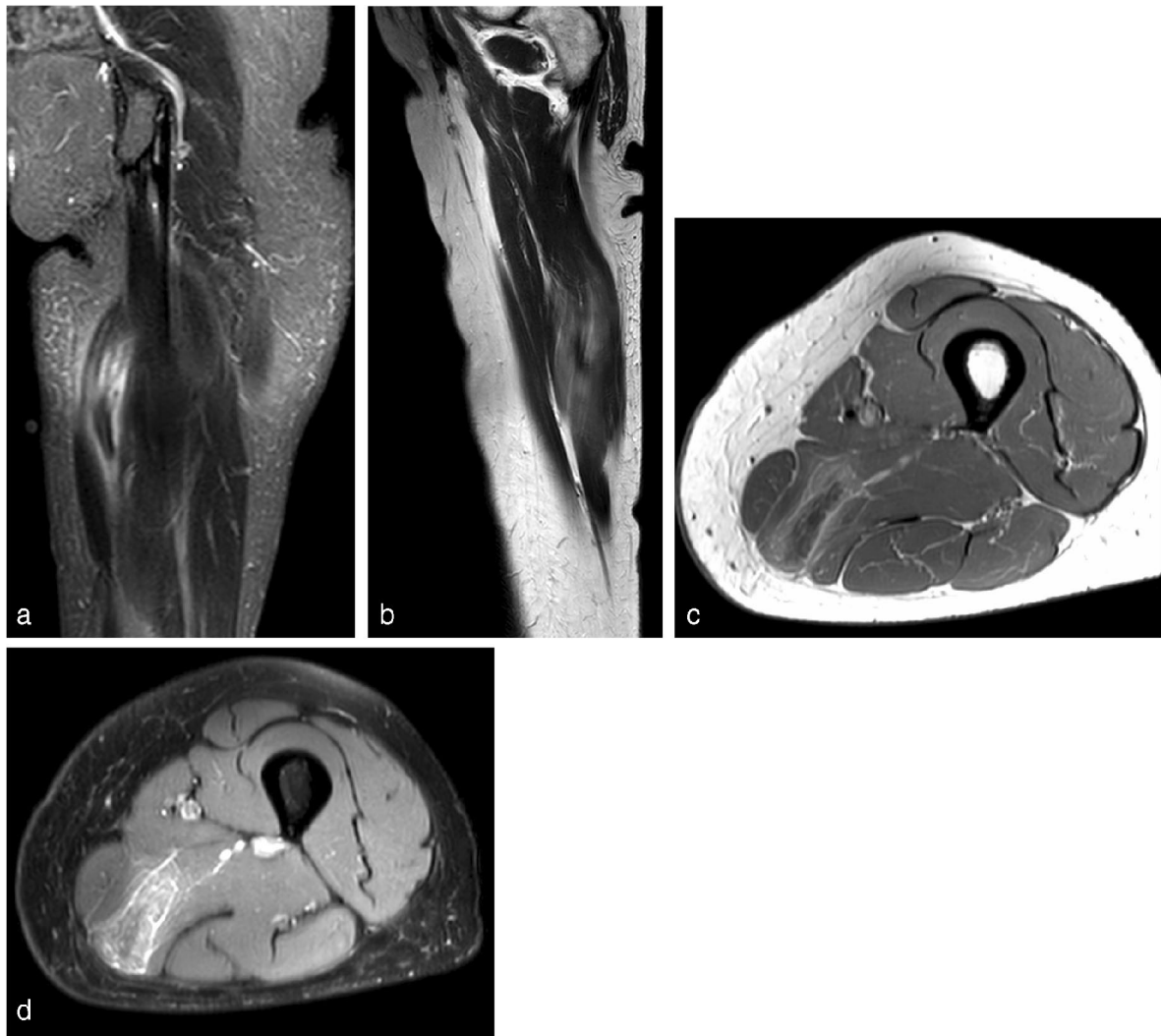
Susan Hesni  
Susan.hesni@nhs.net

Davoud Khodatars  
davoud.khodatars1@nhs.net

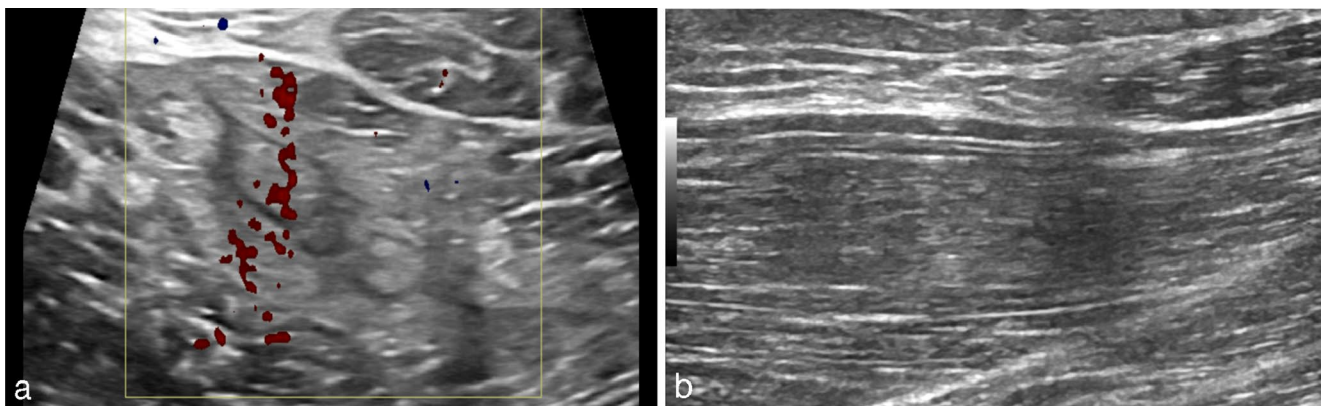
Asif Saifuddin  
asif.saifuddin@nhs.net

Paul O'Donnell  
paulodonnell@nhs.net

<sup>1</sup> Department of Radiology, Royal National Orthopaedic Hospital, Brockley Hill, Stanmore HA7 4LP, UK



**Fig. 1** MRI of the left thigh. **a** Coronal STIR, **b** sagittal T2W FSE, **c** axial PDW FSE and **d** axial PD SPAIR MR images



**Fig. 2** US images of the left mid-thigh. **a** Transverse image with colour Doppler at the time of initial biopsy (no increased vascularity was evident and the colour Doppler activity seen on this image was artefactual) and **b** longitudinal image 2-weeks later