



Test yourself: right knee pain after fall

Jau-Ann Tsai¹ · Kush Shah¹ · A. Ross Sussman^{1,2}

Published online: 20 June 2020
© ISS 2020

History: 12 year old female with no known past medical history fell and hit her right knee while on a cruise ship (Figs. 1, 2, 3 and 4).

Publisher's note Springer Nature remains neutral with regard to jurisdictional claims in published maps and institutional affiliations.

The diagnosis can be found at <https://doi.org/10.1007/s00256-020-03524-7>

✉ Jau-Ann Tsai
jauann.tsai@univrad.com

¹ Department of Radiology, Robert Wood Johnson Medical School, New Brunswick, NJ 08901, USA

² University Radiology Group, 579A Cranbury Road, East Brunswick, NJ 08816, USA

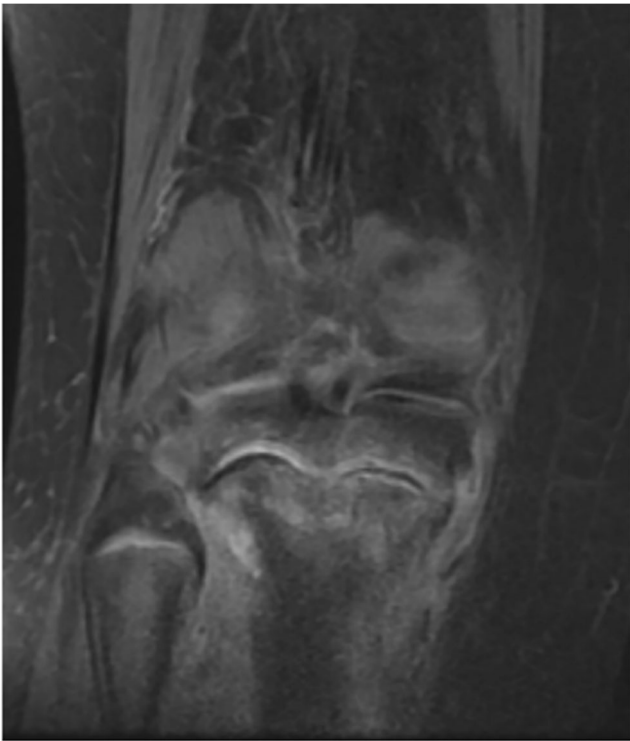


Fig. 1 Coronal proton density-weighted fat-saturated

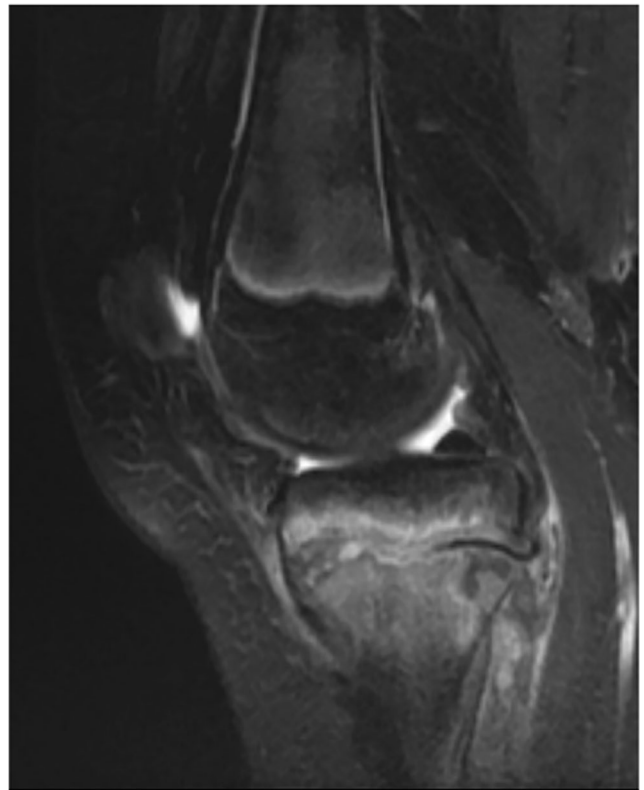


Fig. 3 Sagittal T2-weighted fat-saturated

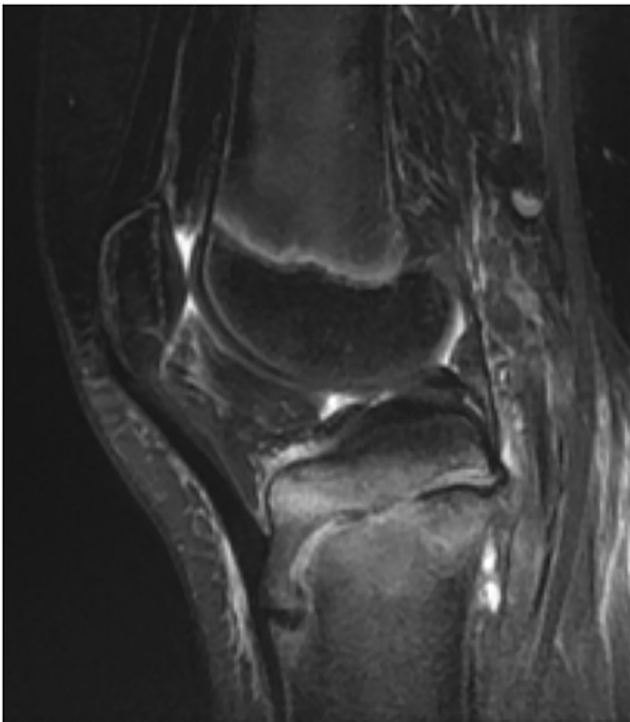


Fig. 2 Sagittal T2-weighted fat-saturated



Fig. 4 Coronal proton density-weighted fat-saturated