

Slowly growing mass on the left shoulder

Wayne B. Cohen-Levy¹ · Jean Jose^{2,3} · Andrew E. Rosenberg^{2,4} · Juan Pretell-Mazzini^{2,5} 

Published online: 30 August 2017
© ISS 2017

History: A 30 year-old otherwise healthy female presented with a slow growing painless mass on her left shoulder that has recently become painful (Figs. 1 and 2).

The diagnosis can be found at doi: <https://doi.org/10.1007/s00256-017-2767-6>

✉ Wayne B. Cohen-Levy
Wayne.CohenLevy@jhsmiami.org

Jean Jose
jjose@med.miami.edu

Andrew E. Rosenberg
ARosenberg@med.miami.edu

Juan Pretell-Mazzini
J.Pretell@med.miami.edu

- ¹ Department of Orthopaedics, Jackson Memorial Hospital/University of Miami, PO Box 016960 (D27), Miami, FL 33101, USA
- ² University of Miami, 1400 NW 12th AVE, Miami, FL 33136, USA
- ³ Department of Radiology – MSK and Sports Medicine Division, 1400 NW 12th AVE, Miami, FL 33136, USA
- ⁴ Department of Pathology, University of Miami Hospital, 1400 NW 12th AVE, Room 4060, Miami, FL 33136, USA
- ⁵ Department of Orthopaedics – Musculoskeletal Oncology, 1400 NW 12th AVE, Suite 4036, Miami, FL 33136, USA

Fig. 1 **a** Ultrasound of the left shoulder mass. **b-d** MRI images of the left shoulder: **(b)** T1 weighted sagittal image, **(c)** T2 weighted fat suppressed axial image, **(d)** Post-contrast T2 weighted fat suppressed sagittal image

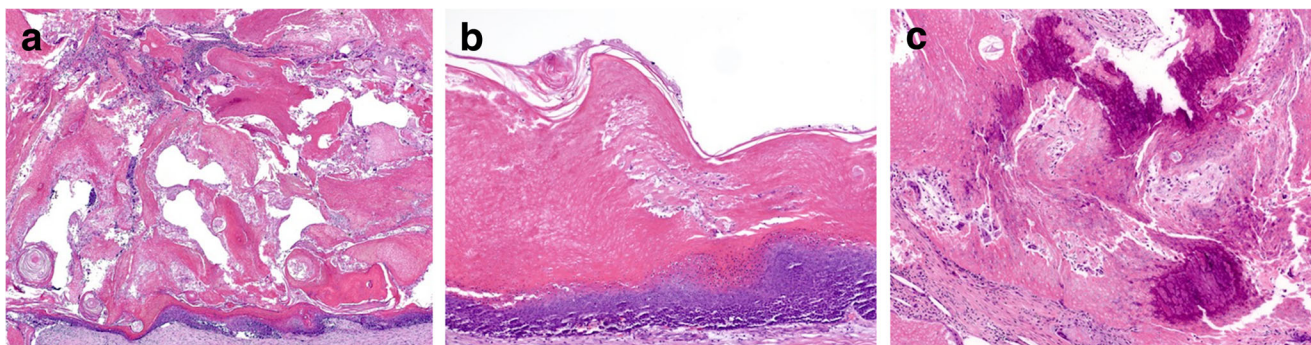
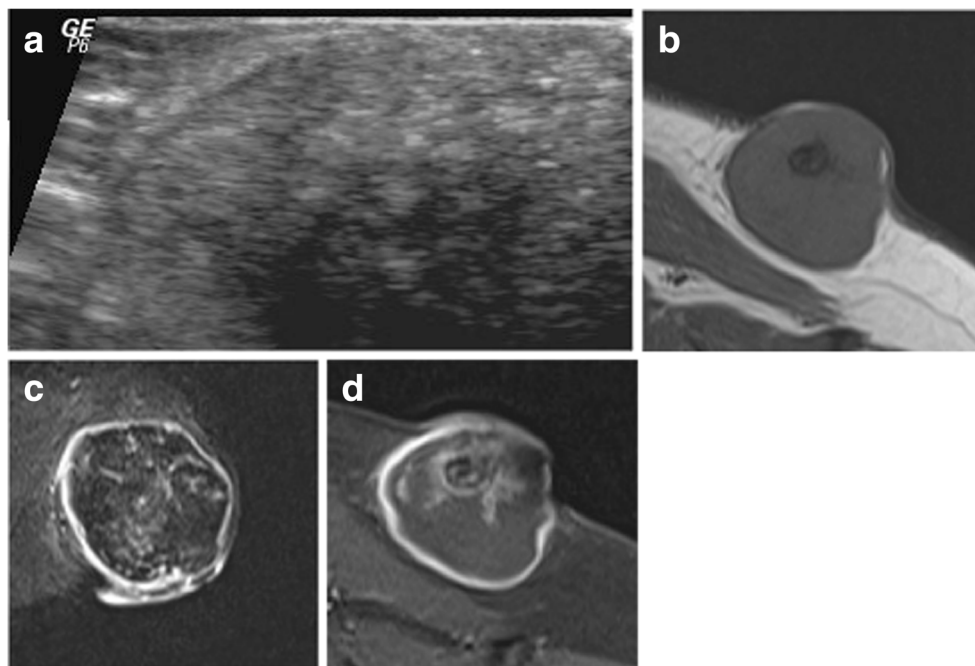


Fig. 2 **a-c:** Hematoxylin and eosin stain. **a** 2x Magnification, **(b)** 4x Magnification, **(c)** 10x Magnification

Funding information No funding was received from this research.

Compliance with ethical standards

Conflict of interest The authors declare that they have no conflict of interest.