

Short stature, painful, curved lower limbs and multiple fractures

Haisong Chen · Yan Han · Xiaofei Li · Xuejun Liu ·
Weihua Feng · Wenjian Xu

Published online: 24 June 2012
© ISS 2012

History

A 23-year old man presented with multiple recurrent fractures of the long bones with pain, bowing, short stature, and difficulty walking since childhood. He was a university graduate student and was well except for the skeletal abnormalities (Figs. 1, 2, 3, 4).

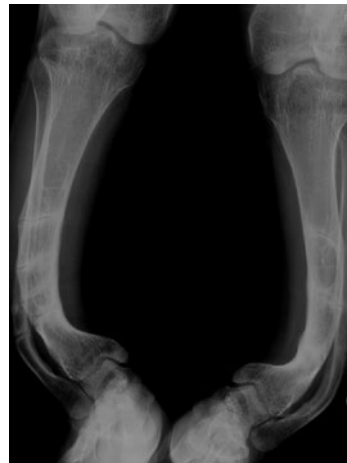


Fig. 1 Anterior-Posterior (AP) radiograph of bilateral tibiae and fibulas

The diagnosis can be found at doi:10.1007/s00256-012-1457-7.

H. Chen · X. Li · X. Liu · W. Feng · W. Xu (✉)
Department of Radiology, the Affiliated Hospital of Medical
College Qingdao University,
Qingdao, China 266003
e-mail: 1021540101@qq.com

H. Chen
e-mail: chs368@sina.com

X. Li
e-mail: xiaofeili@sina.cn

X. Liu
e-mail: greenmark168@hotmail.com

W. Feng
e-mail: edward200811@163.com

Y. Han
Department of Scientific Research,
the Affiliated Hospital of Medical College Qingdao University,
Qingdao, China 266003
e-mail: idreaming_true@sohu.com



Fig. 2 Lateral radiograph of right tibia



Fig. 4 Lateral radiograph of lumbar vertebrae



Fig. 3 Anterior-Posterior (AP) radiograph of bilateral humeri