




Correction to: Ovarian torsion: developing a machine-learned algorithm for diagnosis

Jeffrey P. Otjen¹  · A. Luana Stanescu¹ · Adam M. Alessio² · Marguerite T. Parisi¹

Published online: 28 March 2020

© Springer-Verlag GmbH Germany, part of Springer Nature 2020

Correction to: Pediatric Radiology (2020)

<https://doi.org/10.1007/s00247-019-04601-3>

The original version of this paper included errors in Fig. 3.
The corrected Fig. 3 is presented here.

The online version of the original article can be found at <https://doi.org/10.1007/s00247-019-04601-3>

✉ Jeffrey P. Otjen
jeffrey.otjen@seattlechildrens.org

¹ Department of Radiology, Seattle Children's Hospital and the University of Washington, Seattle Children's Hospital, MA.7.220, 4800 Sand Point Way NE, Seattle, WA 98105, USA

² Computational Mathematics, Science, and Engineering (CMSE), Biomedical Engineering (BME) and Radiology, Institute for Quantitative Health Science & Engineering (IQ), Michigan State University, East Lansing, MI, USA

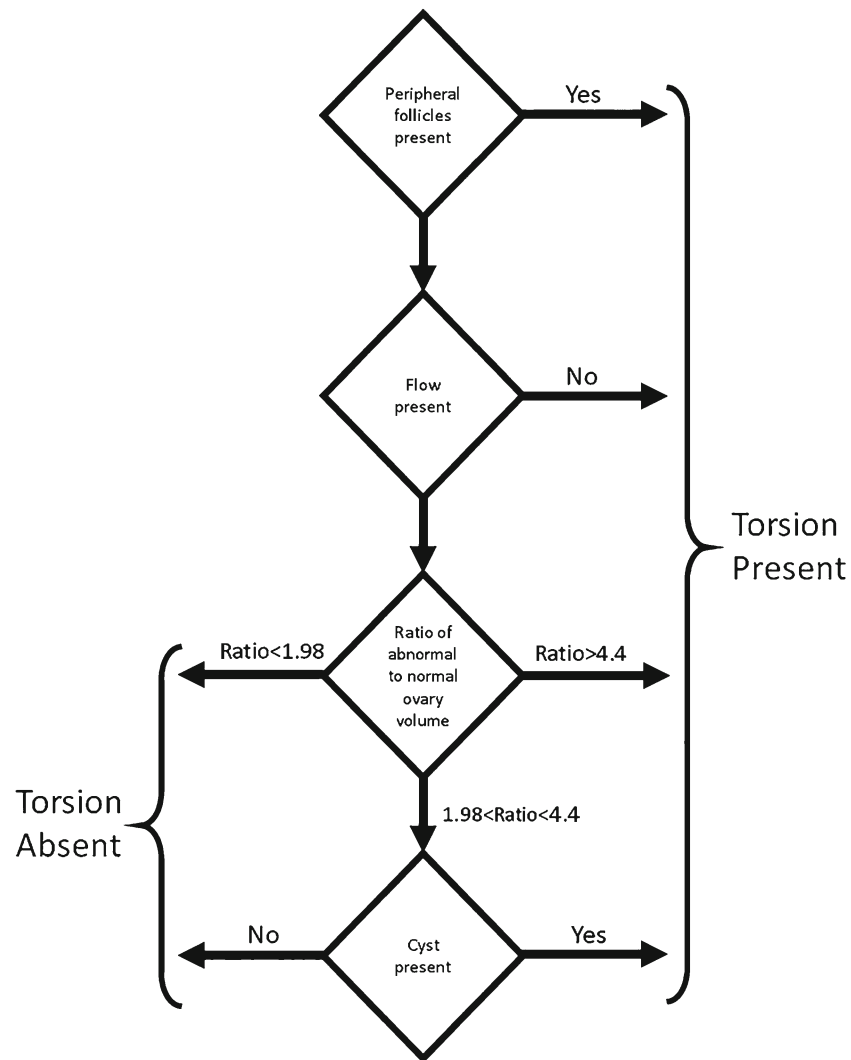


Fig. 3 Optimal decision tree, for pediatric patients older than 1 year, to identify torsion based on multiple features from pelvic ultrasound, yielding a sensitivity of 95%

Publisher's note Springer Nature remains neutral with regard to jurisdictional claims in published maps and institutional affiliations.