

Erratum

Evidence for Multiple Origins of Human Infectivity in *Trypanosoma brucei* Revealed by Minisatellite Variant Repeat Mapping

Annette MacLeod,¹ Susan Welburn,² Ian Maudlin,² C. Michael R. Turner,³ Andy Tait¹

¹ Wellcome Centre of Molecular Parasitology, Anderson College, University of Glasgow, 56, Dumbarton Road, Glasgow G11 6NU, Scotland
² Centre for Tropical Veterinary Medicine, University of Edinburgh, Easter Bush, Midlothian, Scotland
³ Division of Infection and Immunity, IBLS, Joseph Black Building, University of Glasgow, Glasgow G12 8QQ, Scotland

Re: *J Mol Evol* (2001) 52:290–301

Unfortunately Fig. 5 was not printed in color and

there was an error in the legend. The correct figure and legend appear below.

Correspondence to: Annette MacLeod; email: gvwa08@udcf.gla.ac.uk

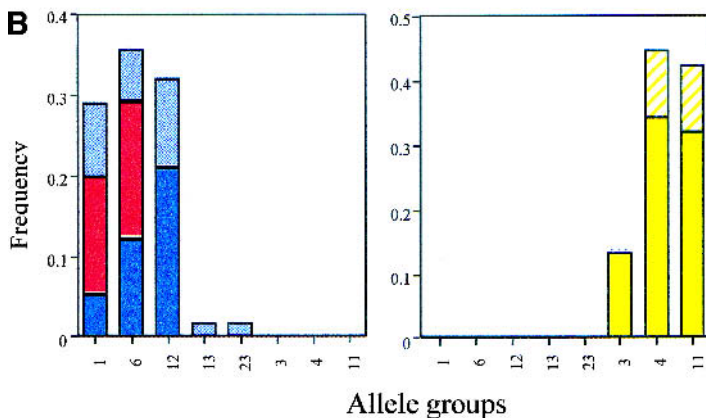
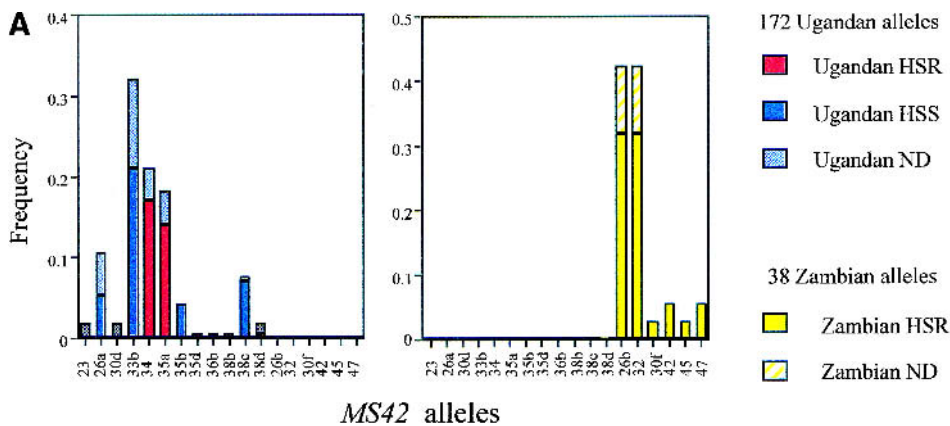


Fig. 5. (A) Comparison of *MS42* allele frequencies from human serum resistant (HSR) and human serum sensitive (HSS) populations from Busoga in Uganda and Luangwa Valley in Zambia. ND indicates human serum sensitivity was not determined. (B) Comparison *MS42* allele group frequencies from human serum resistant (HSR) and human serum sensitive (HSS) populations from Busoga in Uganda and human isolates (HSR) from Luangwa Valley in Zambia.