

Erratum to: HS-SPME-GC×GC-qMS volatile metabolite profiling of *Chrysolina herbacea* frass and *Mentha* spp. leaves

Chiara Cordero · Simon Atsbaha Zebelo ·
Giorgio Gnani · Alessandra Griglione · Carlo Bicchi ·
Massimo E. Maffei · Patrizia Rubiolo

Published online: 2 February 2012
© Springer-Verlag 2012

Erratum to: Anal Bioanal Chem
DOI 10.1007/s00216-011-5600-4

In Figure 3: Figure 3a corresponds to *Mentha spicata*,
Figure 3c corresponds to *Mentha longifolia* on the contrary
of what appeared in the published version. Please find the
correct Figure 3 with its legend below.

The online version of the original article can be found at <http://dx.doi.org/10.1007/s00216-011-5600-4>.

C. Cordero · A. Griglione · C. Bicchi · P. Rubiolo (✉)
Dipartimento di Scienza e Tecnologia del Farmaco,
Università degli Studi di Torino,
Via Pietro Giuria n°9,
10125 Torino, Italy
e-mail: patrizia.rubiolo@unito.it

S. A. Zebelo · G. Gnani · M. E. Maffei
Unità di Fisiologia Vegetale, Dipartimento di Biologia Vegetale,
Università degli Studi di Torino, Centro della Innovazione,
Via Quarello 11/A,
10135 Torino, Italy

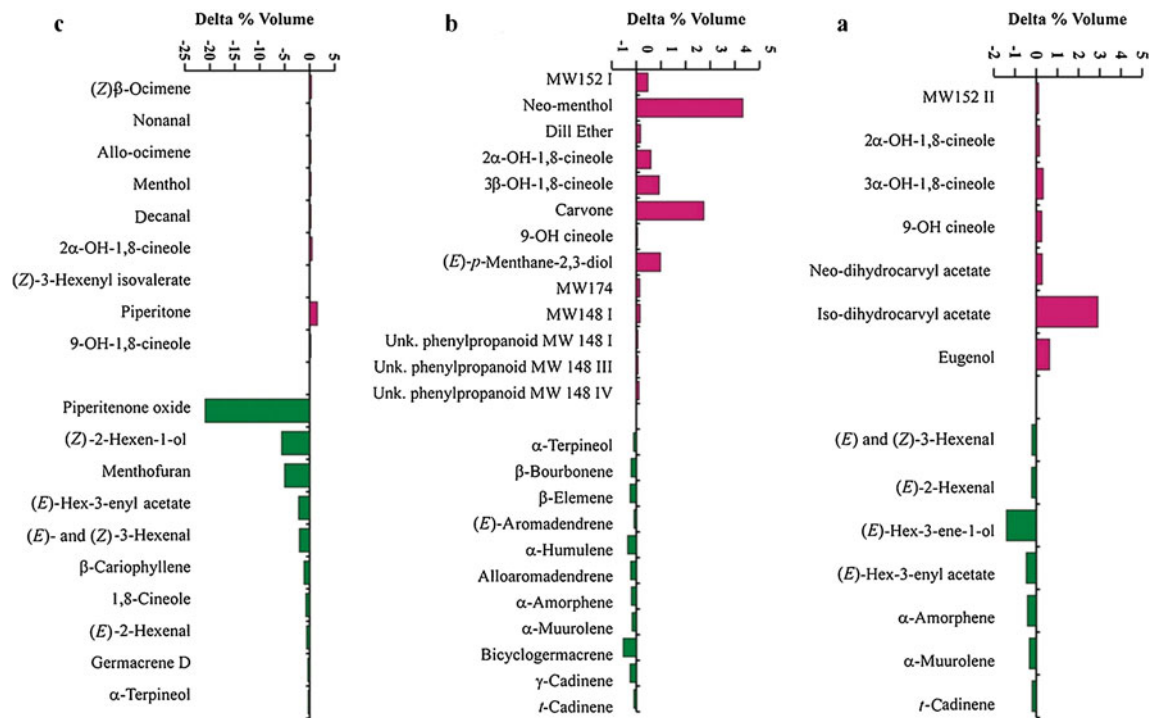


Fig. 3 Distribution of the main features revealed by the Comprehensive Template Matching fingerprinting for (a) *Mentha spicata*, (b) *Mentha piperita* and (c) *Mentha longifolia*. Variations are represented as the difference between 2D Peak Volumes % (PV%) from frass to

leaf. The first group (upper) collects compounds revealed in frass samples and not in leaves, the second (bottom) those revealed in the leaf volatiles profile only