



Correction to: Geraniol activates Nrf-2/HO-1 signaling pathway mediating protection against oxidative stress-induced apoptosis in hepatic ischemia–reperfusion injury

Soad Z. El-Emam¹ · Ayman A. Soubh² · Asmaa K. Al-Mokaddem³ · Dina M. Abo El-Ella¹

Published online: 2 June 2023

© Springer-Verlag GmbH Germany, part of Springer Nature 2023

Correction to: Naunyn-Schmiedeberg's Archives of Pharmacology (2020) 393:1849–1858
<https://doi.org/10.1007/s00210-020-01887-1>

In the published original paper, the images of Figure 3 sub-panel 'a' and 'b' were duplicated image.

During the collection of photomicrographs into the plate, this image was duplicated by mistake as the images were put overlying then dragged to position. The generated data about Bax expression was collected from a group of different microscopic fields. Therefore, this mistake doesn't affect the results.

Additionally, the mistake was in control negative group that was away from the results of the study, and we didn't aim to get better results or change the data.

The correct image of Figure 3 is shown below.

The original article can be found online at <https://doi.org/10.1007/s00210-020-01887-1>.

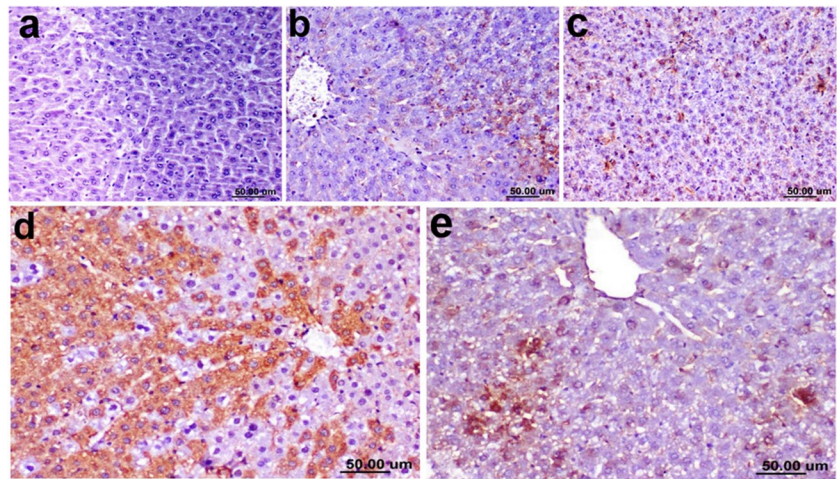
✉ Dina M. Abo El-Ella
Dinamoustafa@o6u.edu.eg

¹ Department of Pharmacology and Toxicology, Faculty of Pharmacy, October 6 University, 6th of October City, Giza 12566, Egypt

² Department of Pharmacology and Toxicology, Faculty of Pharmacy, ACU University, 4th Industrial Zone, Banks Complex, 6th of October City, Giza 12451, Egypt

³ Department of Pathology, Faculty of Veterinary Medicine, Cairo University, Giza 12211, Egypt

Fig. 3 Effect of GOH on Bax expression. **A** Photomicrographs of liver (immunostaining) showing mild expression of Baxpositive cells in (a) normal group, (b) Sham group, and (c) GOH group; strong positive expression of Bax protein in the cytoplasm of hepatocytes was detected in (d) IRI group and significantly lower expression in (e) GOH/IRI group. **B** Area percent of Bax expression in the liver. Values are expressed as mean \pm SD, $n = 7$. * $p < 0.05$ when compared to the control group. # $p < 0.05$ when compared to the IRI group



The authors would like to apologize for this unintended mistake.

Publisher's note Springer Nature remains neutral with regard to jurisdictional claims in published maps and institutional affiliations.