

**CORRECTION**



# Correction: Hemodynamic impact of prone position. Let's protect the lung and its circulation to improve prognosis

Antoine Vieillard-Baron<sup>1,2\*</sup> , Florence Boissier<sup>3,4</sup> and Antonio Pesenti<sup>5</sup>

© 2023 Springer-Verlag GmbH Germany, part of Springer Nature

**Correction: Intensive Care Medicine**

<https://doi.org/10.1007/s00134-023-07001-2>

The original article has been corrected.

In this article, Fig. 1 was incorrect; the Fig. 1 should have appeared as shown below. The Authors apologise for the mistake.

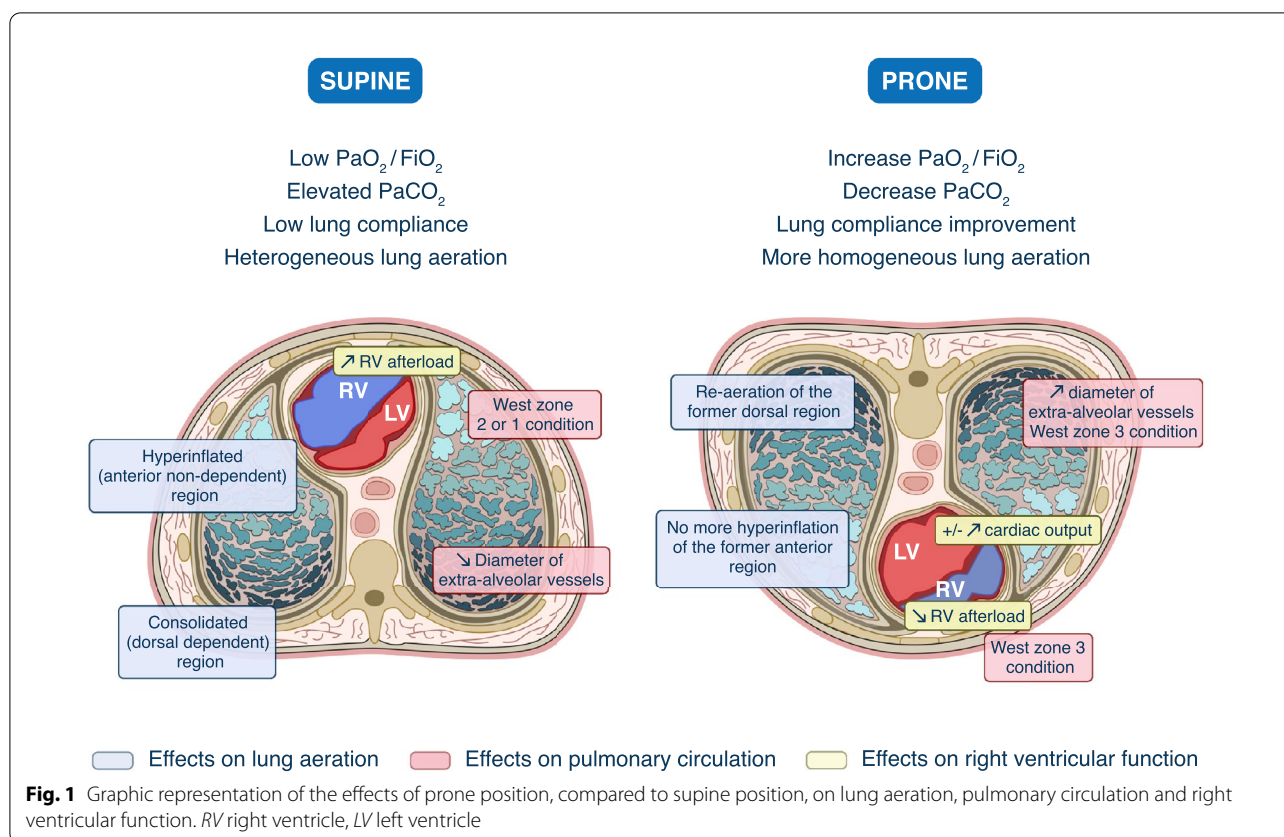
---

\*Correspondence: [antoine.vieillard-baron@aphp.fr](mailto:antoine.vieillard-baron@aphp.fr)

<sup>1</sup> Service de Médecine Intensive Réanimation, Assistance Publique-Hôpitaux de Paris, University Hospital Ambroise Paré, 92100 Boulogne-Billancourt, France

Full author information is available at the end of the article

The original article can be found online at <https://doi.org/10.1007/s00134-023-07001-2>.



#### Author details

<sup>1</sup> Service de Médecine Intensive Réanimation, Assistance Publique-Hôpitaux de Paris, University Hospital Ambroise Paré, 92100 Boulogne-Billancourt, France. <sup>2</sup> INSERM UMR 1018, Clinical Epidemiology Team, CESP, Université de Paris Saclay, Villejuif, France. <sup>3</sup> Service de Médecine Intensive Réanimation, Centre Hospitalo-Universitaire de Poitiers, Poitiers, France. <sup>4</sup> INSERM CIC 1402 (IS-ALIVE Group), Université de Poitiers, Poitiers, France. <sup>5</sup> Fondazione IRCCS Ca' Granda Ospedale Maggiore Policlinico, Milan, Italy.

#### Publisher's Note

Springer Nature remains neutral with regard to jurisdictional claims in published maps and institutional affiliations.

Published: 11 May 2023