

CORRECTION



Correction to: Surface anchorage of superantigen SEA promotes induction of specific antitumor immune response by tumor-derived exosomes

Fangming Xiu^{1,2} · Zhijian Cai¹ · Yunshan Yang¹ · Xiaojian Wang¹ · Jianli Wang¹ · Xuetao Cao^{1,2}

Published online: 15 January 2020

© Springer-Verlag GmbH Germany, part of Springer Nature 2020

Correction to: J Mol Med (2007) 85:511–521

<https://doi.org/10.1007/s00109-006-0154-1>

The corrected Figure 1 image and caption is presented in this paper.

The online version of the original article can be found at <https://doi.org/10.1007/s00109-006-0154-1>

✉ Xuetao Cao
caoxt@immunol.org

Jianli Wang
jlwang@zju.edu.cn

¹ Institute of Immunology, Zhejiang University, 353 Yan'an Road, Hangzhou 310031, People's Republic of China

² Institute of Immunology, Second Military Medical University, 800 Xiangyang Road, Shanghai 200433, People's Republic of China

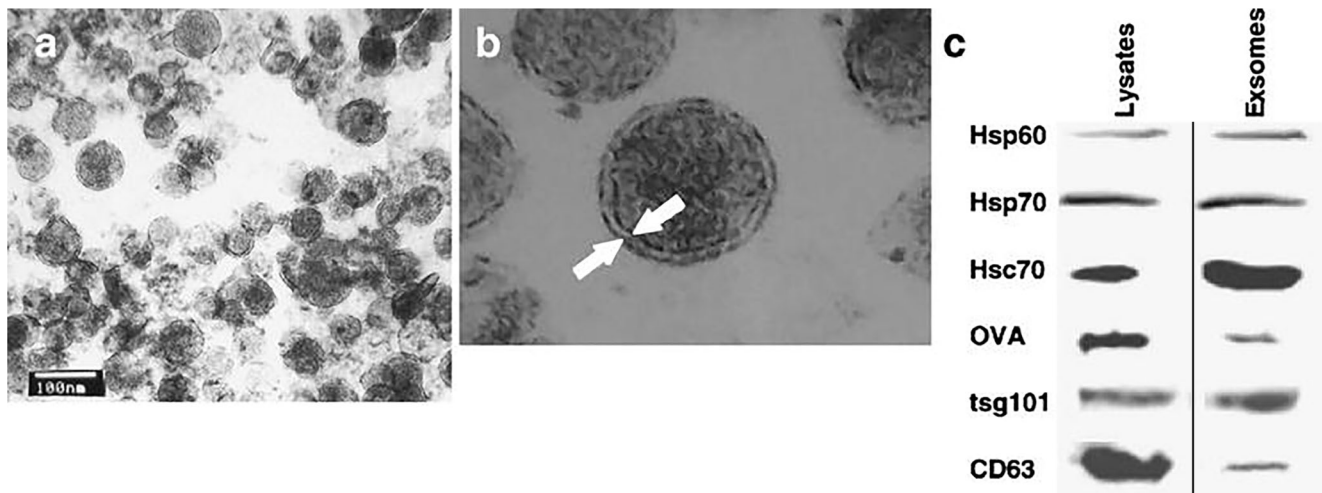


Fig. 1 Identification of E.G7-OVA-derived exosomes. Ultrathin sections were viewed under transmission electron microscope at 80 kv; the exosome sizes were from 40 to 100 nm and limited with a bilayer membrane. **a** Magnification: $\times 65,000$; **b** Magnification: $\times 100,000$, membrane structure (*arrows*) and the “honeycomb-like inner structure” are visible clearly. **c** Protein composition of exosomes derived from E.G7-

OVA cells by Western blot. Same amount of protein of E.G7-OVA cell lysates and exosomes were separated on 10% SDS/PAGE, and the desired proteins were determined by their corresponding antibodies. Specific antibodies used here were antibodies for Hsp 60, Hsp70, Hsc70, OVA, tsg 101, and CD63. **Line indicated the bands were not adjacent.** The results are representative of three independent experiments