

Anaesthesist 2015 · 64:190–196
 DOI 10.1007/s00101-015-0005-y
 Received: 8 August 2014
 Revised: 16 December 2014
 Accepted: 17 December 2014
 Published online: 11 March 2015
 © The Author(s) 2015. This article is published with open access at Springerlink.com

A.R. Heller · J. Heger · M. Gama de Abreu · M.P. Müller

Department of Anaesthesia and Intensive Care Medicine, Department of Anesthesiology and Critical Care Medicine, Medizinische Fakultät Carl Gustav Carus, Technische Universität Dresden, Dresden, Germany

Cafedrine/theodrenaline in anaesthesia

Influencing factors in restoring arterial blood pressure

Both general and regional anaesthesia are associated with a high rate of sympatholysis-induced hypotension that requires fast-acting and reliable anti-hypotensive agents to stabilise blood pressure. For decades hypotension was avoided by the provision of excessive fluid preload, however, this practice faces increasing criticism [3]. In Germany, cafedrine/theodrenaline (Akrinor®) is approved as an anti-hypotensive agent alongside a few other agents.

Background

Cafedrine/theodrenaline was introduced in Germany in 1963, and pre-clinical data showed a beta-adrenergic and an alpha-adrenergic component [22, 25, 26]. The net effect is beta-adrenergic [25]. The combination preparation increases mean arterial pressure (MAP), cardiac stroke volume and cardiac output [18, 25]. Compared to alpha-adrenergic sympathomimetic agents, cafedrine/theodrenaline was shown to cause less deterioration of renal, cerebral and coronary perfusion [5]. In addition, clinical practice with alpha-adrenergic sympathomimetic agents requires measures to control refractory critical bradycardia, for example with atropine [7]. A study in dogs demonstrated that increased myocardial oxygen consumption caused by positive inotropic cafedrine/theodrenaline effects are compensated for by enhanced coronary perfusion, increasing the myocardial oxygen supply [9]. The pharmacologic properties of this drug combination may explain the distinctly favour-

able effects in patients with chronic ischaemic heart disease [11, 15]. In addition, cafedrine/theodrenaline combination seems to offer benefits from a metabolic standpoint because of the lower lipolytic effect compared with catecholamines, particularly under hypoxic conditions in acute myocardial infarction or shock [21].

Although cafedrine/theodrenaline is widely accepted in the management of hypotensive states in anaesthesia, intensive care and emergency medicine [1, 6, 16], few pharmacodynamic data have been published [13], and it is therefore important to collect data under routine clinical practice conditions. Cafedrine/theodrenaline is routinely administered at our institution to patients in whom a quick and sustained MAP increase for 15–20 min is warranted and feasible with a single drug administration and without the vasopressor side effect of bradycardia; during these 15–20 min, fluid volume can be balanced. Gender-related differences in the ED₅₀ of cafedrine/theodrenaline have previously been reported by our group [13]. To confirm and expand on this observation under routine anaesthesia conditions, the time to 10% increase in MAP after administration of cafedrine/theodrenaline was examined. We hypothesized that gender, heart failure and use of beta-blockers influence the effectiveness of cafedrine/theodrenaline.

Methods

This study was approved by the Institutional Review Board at the University Hospital Carl Gustav Carus Medical Fac-

ulty, Fetscherstrasse 74, Dresden, Germany (EK255122004, 17.01.2005). The records from 353 consecutive anaesthesia patients at our institution who received cafedrine/theodrenaline were collected and retrospectively evaluated. Patients were included in the study between July and November 2007, irrespective of the type of surgery, and received cafedrine/theodrenaline to manage hypotension during anaesthesia. To reflect a real-life cross-section of patients in a German hospital, patients from the following departments were included: orthopaedics, trauma surgery, neurosurgery, visceral-thoracic and vascular surgery, gynaecology, urology, oral and facial surgery and eye surgery.

All patients fasted 2 h prior to induction and received 7.5 mg midazolam OD (Dormicum®, Roche, Grenzach-Wyhlen, Germany) 45 min prior to arrival in the operating theatre. Concomitant medication, including anti-hypertensives such as beta-blockers, was continued as indicated by the standard operating procedures of the department. A 5-lead electrocardiogram, including measurement of segmental ST depression (II, aVF, V5), and pulse oximetry was recorded. Non-invasive oscillometric blood pressure was monitored in 5 min intervals on the right upper arm (IntelliVue®, MP70, Philips, Böblingen, Germany). Values were manually transferred to anaesthesia protocols. The following data were recorded: age, gender, height, body weight, current beta-blocker therapy, American Society of Anesthesiologists physical status and individual dosage of cafedrine/theodrenaline per injection.

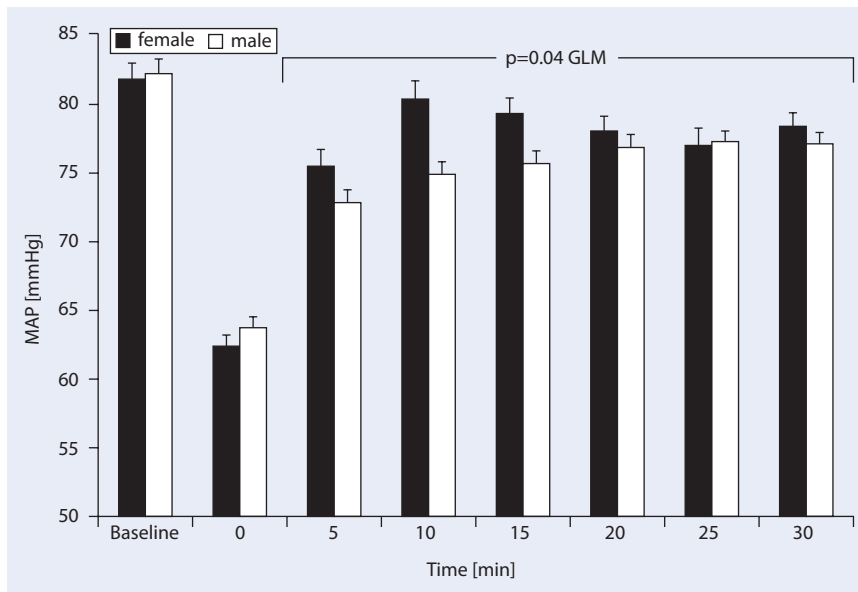


Fig. 1 ▲ Effects of cafedrine/theodrenaline on mean arterial pressure (MAP, mean \pm SE) injected at time point 0 (reference value) in male and female patients. Both MAP drop and increase were statistically significant ($p < 0.001$, paired t -test), as was the between-group comparison with general linear model (GLM) according to two-way analysis of variance (ANOVA) ($p = 0.04$)

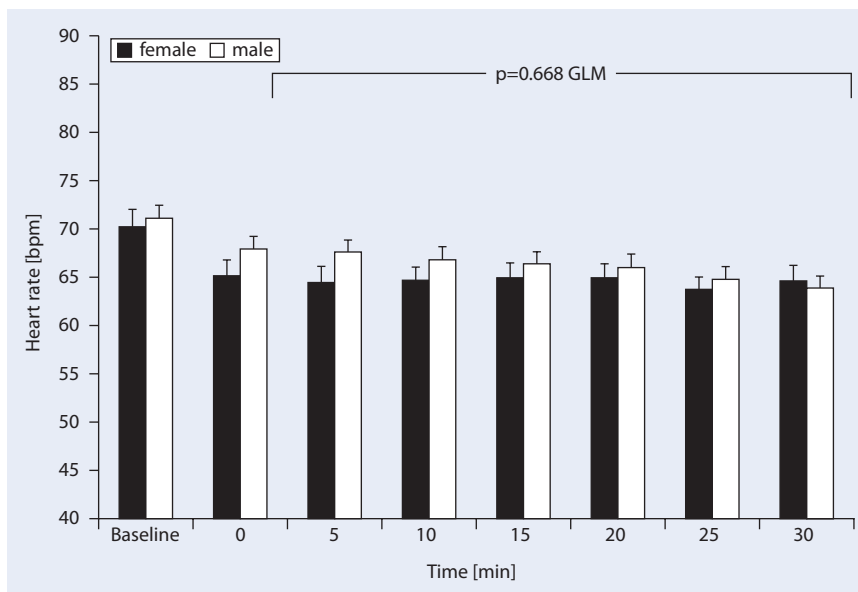


Fig. 2 ▲ Effects of cafedrine/theodrenaline on heart rate (mean \pm SE) injected at time point 0 (reference value) in male and female patients. The difference between genders was not significant ($p = 0.668$), while the heart rate difference over time was statistically significant ($p < 0.001$)

General anaesthesia was induced with 1.5 mg/kg propofol (Propofol 1%, Fresenius-Kabi, Bad Homburg, Germany) and 0.5 μ g/kg sufentanil (Sufenta[®] Janssen-Cilag, Neuss, Germany). Tracheal intubation was facilitated by 0.5 mg/kg rocuronium (Esmeron[®], Organon, Oberschleißheim, Germany). General anaesthesia was maintained with desflurane (Suprane[®], Baxter, Unterschleißheim,

Germany) in O₂/N₂O (35%/60%). Patients were mechanically ventilated with a minute volume adequate to maintain end-tidal pCO₂ of 36–40 mmHg at a fresh gas flow of 1 l/min (Primus[®], Dräger, Lübeck, Germany). Neuraxial anaesthesia (spinal anaesthesia, epidural anaesthesia) was performed with approved local anaesthetics in awake seated patients [19].

In patients with $\geq 5\%$ drop in MAP cafedrine/theodrenaline was administered to maintain MAP within a 20% drop from baseline. We chose the 5% drop in MAP as the inclusion criterion to raise awareness that hypotension even in this range may be associated with late complications. Timing and doses were recorded in anaesthesia protocols. The observation period in this study was limited to 30 min after the drop in MAP because the variability of factors affecting MAP, such as additional volume therapy, ongoing blood loss and the use of other drugs increases with time. Individual dosage was defined in accordance with a previous dose-finding study, in which the ED₅₀ of cafedrine to achieve a 10% MAP increase within 10 min was 0.53 mg/kg [13].

Administration of cafedrine/theodrenaline

An ampoule of 2 ml cafedrine/theodrenaline (Akrinor[®], AWD.pharma GmbH & Co. KG, Dresden, Germany) contains 200 mg cafedrinhydrochloride, 10 mg theodrenalinehydrochloride, 0.4 mg sodiumdisulfite, ethanol 96%, glycerol 85%, sodium acetate 3 H₂O, acetic acid 99% and water. To enable fairly precise dosing, 2 ml of cafedrine/theodrenaline were diluted in 8 ml of saline to a total of 10 ml, as suggested in the prescribing information. Throughout the manuscript doses are given for the cafedrine component of the mixture. Due to the fixed milligram ratio of 1:20, the dosage of theodrenaline can be calculated by dividing the respective cafedrine dose by 20.

Endpoints

The primary endpoint was time to 10% increase in MAP after administration of cafedrine/theodrenaline. Other study endpoints were stability of heart frequency and time to onset of effect dose relative to gender, beta-blocking agents and the presence of heart failure (NYHA ≥ 1).

Statistical analysis

Mean arterial blood pressure was calculated as MAP = diastolic + (systolic-diastolic)/3. All data were anonymised and

A.R. Heller · J. Heger · M. Gama de Abreu · M.P. Müller

Cafedrine/theodrenaline in anaesthesia. Influencing factors in restoring arterial blood pressure

Abstract

Background. Hypotensive states that require fast stabilisation of blood pressure can occur during anaesthesia. In 1963, the 20:1 mixture of cafedrine/theodrenaline (Akri-nor®) was introduced in Germany for use in anaesthesia and emergency medicine in the first-line management of hypotensive states. Though on the market for many years, few pharmacodynamic data are available on this combination net beta-mimetic agent.

Aim. This study aimed to examine the drug combination in real-life clinical practice and recorded time to 10% mean arterial blood pressure (MAP) increase and heart rate. Furthermore, potential factors that influence drug effectiveness under anaesthesia were assessed.

Methods. Data were collected within a standardised anaesthesia protocol. A total of 353 consecutive patients (female/male = 149/204) who received cafedrine/theodrenaline after a drop in MAP $\geq 5\%$ were

included in the study. The time to 10% increase in MAP, dosage of cafedrine/theodrenaline, volume loading, blood pressure and heart rate were monitored over time.

Results. Patients were a mean (standard deviation) of 64.4 ± 15.1 years old with a baseline MAP of 82 ± 14 mmHg, which dropped to a mean of 63 ± 10 mmHg during anaesthesia without gender differences. Cafedrine/theodrenaline (1.27 ± 1.0 mg/kg; 64 ± 50 μ g/kg) significantly increased MAP ($p < 0.001$) by 11 ± 16 mmHg within 5 min, reaching peak values within 17.4 ± 9.0 min. Heart rate was not affected in a clinically significant manner. Cafedrine/theodrenaline induced a 10% MAP increase after 7.2 ± 4.6 min (women) and after 8.6 ± 6.3 min (men) ($p = 0.018$). Independent of gender, the dose of cafedrine/theodrenaline required to achieve the observed MAP increase of 14 ± 16 mmHg at 15 min was significantly different in patients with heart failure [1.78 ± 1.67 mg/

kg (cafedrine)/ 89.0 ± 83.5 μ g/kg (theodrenaline)] compared with healthy patients [1.16 ± 0.77 mg/kg (cafedrine)/ 58.0 ± 38.5 μ g/kg (theodrenaline)] ($p = 0.005$). Concomitant medication with beta-blocking agents significantly prolonged the time to 10% MAP increase [9.0 ± 7.0 vs. 7.3 ± 4.3 min ($p = 0.008$)].

Conclusion. Cafedrine/theodrenaline quickly restores MAP during anaesthesia. Female gender is associated with higher effectiveness, while heart failure and beta-blocker administration lower the anti-hypotonic effect. Prospective studies in defined patient populations are warranted to further characterise the effect of cafedrine/theodrenaline.

Keywords

Cafedrine/theodrenaline drug combination · Hypotension · Heart frequency · Beta-blocker effects · Heart failure

Cafedrin/Theodrenalin in der Anästhesie. Faktoren, die die Wirksamkeit bei der Wiederherstellung des Blutdrucks beeinflussen

Zusammenfassung

Hintergrund. Cafedrin/Theodrenalin (Akri-nor®) wird in Deutschland für die Therapie von Blutdruckabfällen in Anästhesie und Notfallmedizin verwendet.

Ziel der Arbeit (Fragestellung). Die Studie untersucht potentielle Faktoren, die die Wirksamkeit des Arzneimittels beeinflussen.

Material und Methoden. Patientendaten wurden mittels Anästhesie-Protokollen gesammelt. 353 Patienten (weiblich/männlich = 149/204), die Cafedrin/Theodrenalin nach einem Abfall des mittleren arteriellen Blutdrucks (MAP) $\geq 5\%$ erhielten, wurden einbezogen.

Ergebnisse. Die Patienten waren $64,4 \pm 15,1$ Jahre alt und hatten einen Ausgangs-MAP von 82 ± 14 mmHg, der während der Anästhesie unabhängig von Geschlecht auf einen Mittelwert von 63 ± 10 mmHg abfiel.

Cafedrin/Theodrenalin ($1,27 \pm 1,0$ mg/kg/ 64 ± 50 μ g/kg) erhöhte den MAP innerhalb von 5 min um 11 ± 16 mmHg ($p < 0,001$). Der maximale MAP war nach $17,4 \pm 9,0$ min erreicht; die Herzfrequenz wurde nicht im klinisch signifikanten Maß verändert. Cafedrin/Theodrenalin induzierte einen 10% MAP-Anstieg nach $7,2 \pm 4,6$ min bei Frauen und nach $8,6 \pm 6,3$ min bei Männern ($p = 0,018$). Unabhängig vom Geschlecht waren die Dosen von Cafedrin/Theodrenalin, die zu dem beobachteten MAP-Anstieg um 14 ± 16 mmHg nach 15 min führten, signifikant unterschiedlich zwischen Patienten mit und ohne Herzinsuffizienz ($1,78 \pm 1,67$ mg/kg (Cafedrin)/ $89,0 \pm 83,5$ μ g/kg (Theodrenalin) vs. $1,16 \pm 0,77$ mg/kg (Cafedrin)/ $58,0 \pm 38,5$ μ g/kg (Theodrenalin), $p = 0,005$).

Gleichzeitige Medikation mit Betablockern verlängerte die Zeit bis zum 10% MAP-Anstieg [$9,0 \pm 7,0$ vs. $7,3 \pm 4,3$ min ($p = 0,008$)].

Schlussfolgerung. Theodrenalin/Cafedrin stellt den MAP nach Blutdruckabfällen schnell wieder her ohne die Herzfrequenz klinisch relevant zu verändern. Das Medikament zeigt eine höhere Wirksamkeit bei Frauen, während Herzinsuffizienz und Betablocker den Effekt schwächen.

Schlüsselwörter

Cafedrin/Theodrenalin · Blutdruckabfall · Herzinsuffizienz · Betablocker-Effekte · Herzfrequenz

analysed using the Statistical Package for Social Sciences for Windows, version 17.0 (SPSS, Inc., Chicago, IL, USA). The primary study hypothesis was tested using a Kaplan–Meier analysis followed by a log-rank test. General linear model statistics according to a two-way analysis of variance were applied for repeated measure-

ment analyses, followed by Sidak alpha adjustment for multiple comparisons. A paired *t*-test served for analysing point to point changes in haemodynamics. To ensure equal distribution of risk factors between the observed cohorts, categorical variables were compared with χ^2 statistics.

Data are expressed as mean \pm SD. To support readability and interpretation in **■ Figs. 1 and 2**, data are presented as mean \pm SE. A *p*-value of < 0.05 was considered statistically significant.

	Women (n = 149)	Men (n = 204)	p-value
Age (years)	65.6 ± 16.6	63.6 ± 13.8	n.s.
Weight (kg)	69.6 ± 18.4	81.3 ± 15.4	0.001
ASA class	2.4 ± 0.7	2.5 ± 0.6	n.s.
Heart failure NYHA ≥ 1 [n (%)]	35 (23.5%)	32 (15.7%)	n.s.
Current beta-blocker therapy [n (%)]	50 (33.6%)	61 (29.9%)	n.s.
Heart failure NYHA ≥ 1 and beta-blocker therapy [n (%)]	18 (12.1%)	18 (8.8%)	n.s.
Score by Canadian Cardiovascular Society	0.2 ± 0.5	0.1 ± 0.4	n.s.
Volume load with crystalloids (ml)	481 ± 293	493 ± 287	n.s.
Baseline MAP (mmHg)	81.8 ± 12.8	82.2 ± 14.5	n.s.
MAP after decrease (mmHg); reference	62.4 ± 8.9	63.8 ± 11.4	n.s.
Dosage Akrinor® (cafedrine mg/kg) ^a	1.3 ± 1.0	1.2 ± 1.0	n.s.

ASA American Society of Anesthesiologists, NYHA New York Heart Association, MAP mean arterial pressure
^aCafedrine:theodrenaline fixed milligram ratio = 20:1

	Women (n = 149)	Men (n = 204)	p-value
10% MAP increase (min)	7.2 ± 4.6	8.6 ± 6.3	0.018
Time to maximum MAP effect (min)	17.0 ± 9.1	17.7 ± 9.0	n.s.

Akrinor® ampoules	1	1/2	1/4
Cafedrine (mg)	200	100	50
Theodrenaline (mg)	10	5	2.5
Akrinor® solution undiluted (ml)	2	1	0.5
Akrinor® 1 ampoule diluted to 10 ml (ml)	10	5	2.5
Mean study dosage Akrinor® per 75 kg BW (amp) ^a	0.48		

^aStudy mean dosage used was 1.3 ± 1.0 mg/kg (Cafedrine), 64 ± 50 µg/kg (Theodrenaline)

Results

Data were collected for 353 consecutive anaesthesia patients (mean age 64.4 ± 15.1) at a single institution who received cafedrine/theodrenaline to treat hypotensive states during surgery between July and November 2007. Demographic characteristics, baseline values and treatment are presented in **Table 1**. 172 and 181 patients received general and neuraxial anaesthesia, respectively.

The MAP dropped from a mean baseline value of 82 ± 14 to 63 ± 10 mmHg (equivalent to 78 ± 12% of the baseline level; $p < 0.001$). MAP increase after 5 min was also statistically significant ($p < 0.001$), however mean baseline MAP values and the drop during surgery did not differ between genders (**Fig. 1**, **Table 2**). MAP increased by 11 ± 16 mmHg ($p < 0.001$) 5 min after administration of cafedrine/theodrenaline, while heart rates remained at a mean of 66 ± 18 bpm over 20 min.

The highest MAP values were achieved 17.4 ± 9.0 min after the drop and administration of 1.27 ± 1.0 mg cafedrine/kg, independent of gender. For ease of transferring applied cafedrine/theodrenaline dosages into the reader's clinical practice, **Table 3** gives the relevant standard doses, dilutions and relations to body weight. Heart rates before the drop in MAP were a mean of 71 ± 18 and 67 ± 19 bpm after the drop ($p < 0.001$).

Cafedrine/theodrenaline effectiveness according to gender

Heart rates did not differ significantly between genders (**Fig. 2**). After the drop in blood pressure cafedrine/theodrenaline induced a 10% increase in MAP significantly earlier in women 7.2 ± 4.6 vs. 8.6 ± 6.3 min in men ($p = 0.018$) (**Table 2**, **Fig. 3**), however, the duration of the pressure-elevating effect as assessed by

the time to peak MAP did not differ in a gender-related manner (**Table 2**).

Cafedrine/theodrenaline in patients with heart failure

The time to highest MAP was longer for the 67 patients with heart failure than for patients without heart problems ($p = 0.007$) (**Fig. 4**). In addition, the dose (mg/kg body weight) to achieve MAP increase in a similar range at 15 min (by 14 ± 16 mmHg in heart failure patients and by 14 ± 14 mmHg in healthy patients) were 1.78 ± 1.67 mg/kg in patients with heart failure and 1.16 ± 0.77 mg/kg in the healthy cohort ($p = 0.005$). This difference was independent of gender.

Cafedrine/theodrenaline in patients with beta-blocking agents

Concomitant medication with beta-blocking agents significantly prolonged the time to 10% increase in MAP ($n = 111$, 9.0 ± 7.0 vs. 7.3 ± 4.3 min, $p = 0.008$) (**Fig. 5**). Factors potentially affecting the effectiveness of beta-stimulants such as the extent of volume load (492 ± 288 ml without beta-blocking agents and 475 ± 289 ml with beta-blocking agents) prior to blood pressure drop did not differ between the groups.

Discussion

Risks of hypotonia during anaesthesia

Induction of anaesthesia induces sympathicolysis, regardless of the type of anaesthesia, whether general or neuraxial, and poses a risk of hypotension, in particular when the administration of intravenous fluids is restricted [12, 17, 27]. The dilation of resistance and capacitance vessels in the blocked area, with a subsequent decrease of pressure in the systemic and pulmonary circulation, leads to a reduction in cardiac preload and afterload, posing a risk of cerebral or myocardial ischaemia as well as acute renal failure [10, 14]. The use of balanced anti-hypotonic agents such as cafedrine/theodrenaline may be beneficial when combined with gentle volume loading, especially in

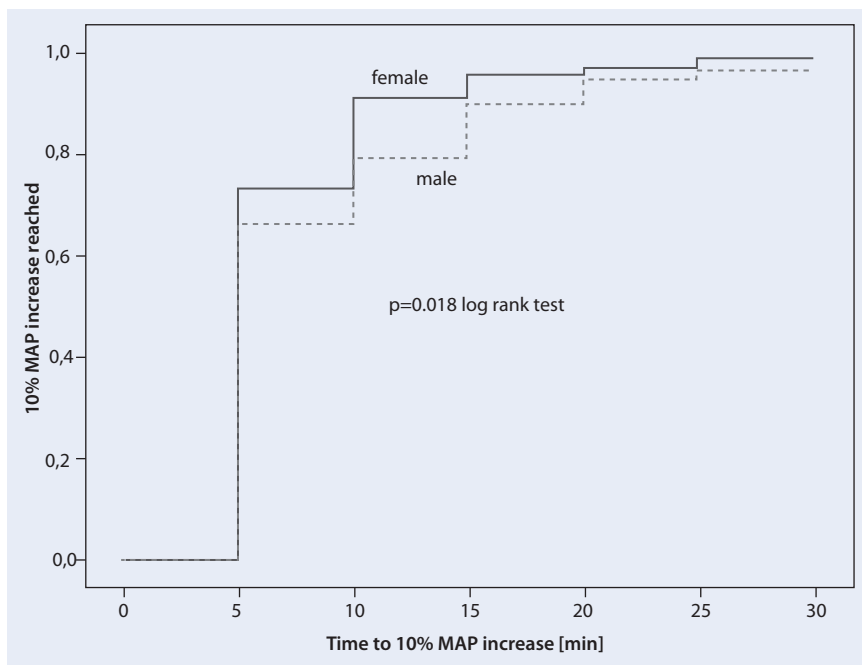


Fig. 3 ▲ Kaplan–Meier analysis of the time to 10% mean arterial pressure (MAP) increase in male (dotted line) and female (solid line) patients after cafedrine/theodrenaline injection at time point 0 ($p=0.018$, log-rank test)

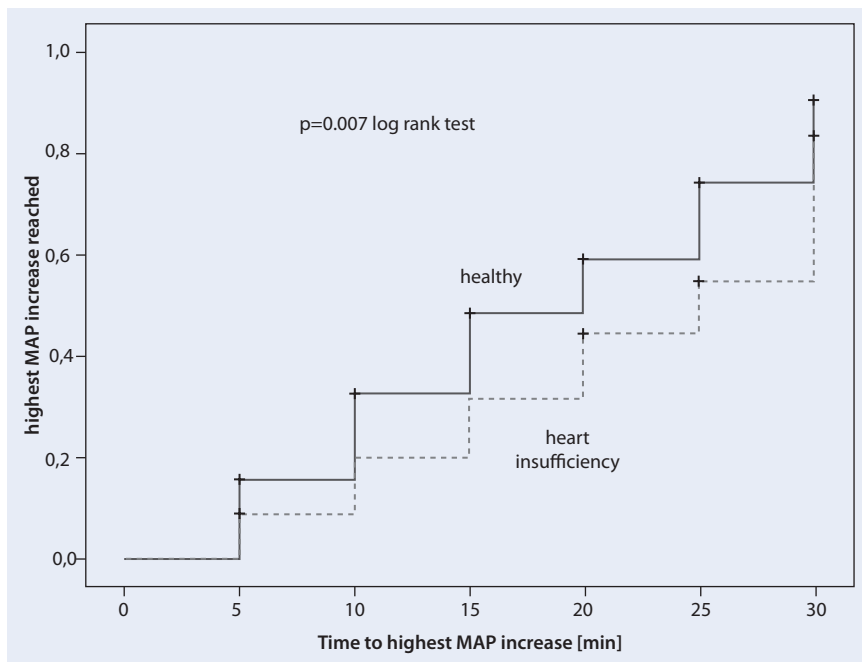


Fig. 4 ▲ Kaplan–Meier analysis of the time to highest mean arterial pressure (MAP) after cafedrine/theodrenaline injection at time point 0 in patients with heart failure (NYHA ≥ 1 , dotted line) and healthy patients (solid line) ($p=0.007$, log-rank test). Cases not reaching a MAP increase of 20% within 30 min were censored

elderly patients [4, 28] and during more extensive surgical interventions [20]. A pilot study [13] suggested that male gender, heart failure and beta-blocking agents are factors that negatively influence the

effectiveness of cafedrine/theodrenaline. Here we performed more in-depth analyses (Kaplan–Meier analyses) using an independent patient population to further elucidate the influences. We aimed to in-

clude a broad range of patients that had a $\geq 5\%$ blood pressure drop to represent a real-life population, regardless of underlying conditions. The range of the drop in blood pressure may vary in relation to the underlying disease; this study focuses on the therapy of the hypotensive states.

Blood pressure restoration with pure alpha- or beta-adrenergic agents vs. cafedrine/theodrenaline

Due to the limited half-life, bolus administration of catecholamines has only a short-term circulatory effect [7]. Moreover, bolus injection of pure alpha-agonists cause an undesirable direct increase in peripheral resistance, resulting in additional energy-consuming wall tension in the myocardium [5] and bradycardia, necessitating additional pharmacologic treatment with atropine [7]. Alternatively, pure beta-mimetic drugs induce a delayed increase in blood pressure, due to initial vascular β_2 -stimulation and the dependency on vascular filling; as a consequence, undesirable increases in heart rate are observed [18].

Here we show that the administration of cafedrine/theodrenaline significantly increased MAP in both genders without affecting the heart rate in a clinically significant manner. These observations are in line with experimental investigations [9, 11] and small clinical studies [13, 24].

Affecting the effectiveness: gender, beta-blocking agents and heart failure

The time to 10% MAP increase in this cohort was longer in men and in patients who had previously received beta-blocking agents. The more rapid increase in MAP in women may be attributable to the lower cafedrine/theodrenaline ED_{50} [13] and/or the higher intravascular fluid volume is observed in women [23] due to the higher level of endogenous oestrogen and resulting increase in preload. The downregulation of beta-receptors in older men [8] and oestrogen receptor-dependent effect that protects women from left ventricular hypertrophy and congestive heart failure [2] might represent contributing factors as well. Although poten-

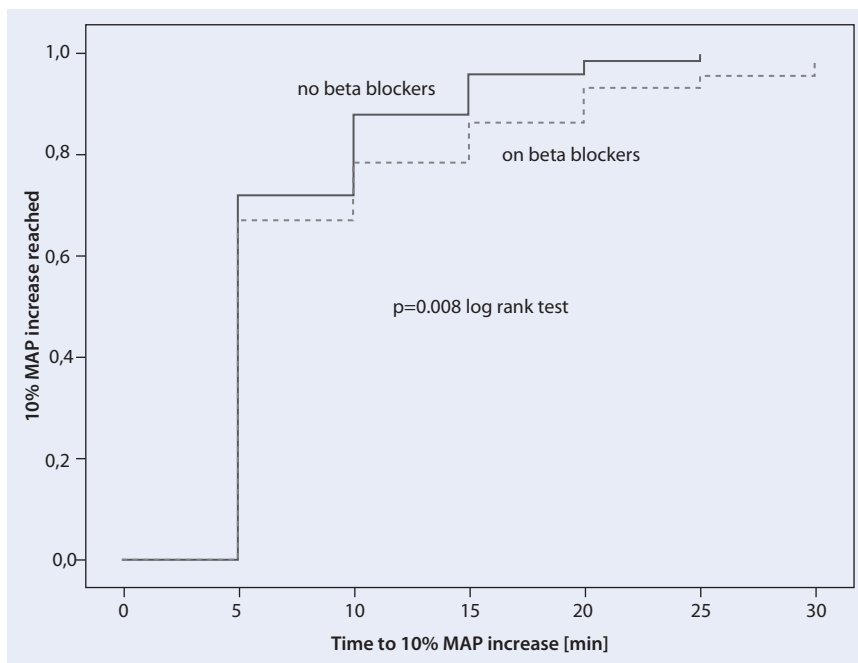


Fig. 5 ▲ Kaplan–Meier analysis of the time to 10% mean arterial pressure (MAP) increase after cafe-drine/theodrenaline injection at time point 0 in patients with (dotted line) and without (solid line) current beta-blocker therapy ($p=0.008$, log-rank test)

tially not relevant under day-to-day circumstances, during acute sympathicolysis-dependent hypotension these factors [2, 8] could have a clinical effect and at least partially explain the gender-related difference in the time to effect after cafe-drine/theodrenaline administration. The effect of concomitant beta-blocker therapy on the effectiveness of cafe-drine/theodrenaline is not surprising, given the predominantly beta-mimetic effects of this drug combination [24, 25] Patients with heart failure required longer to reach the maximum MAP and required higher doses of cafe-drine/theodrenaline. Apparently patients with heart failure are not able to respond to stimulation by alpha- and beta-adrenergic agents [13].

Limitations

This study has a number of limitations. The association between heart failure and the use of beta-blockers and the influence of health status and gender on the type of anaesthesia (general vs. regional) administered may have introduced sources of selection bias, especially in patients with heart failure receiving beta-blockers. Larger prospective and controlled studies with a more strictly defined and strati-

fied patient populations are certainly warranted.

Conclusion for clinical practice

- Cafe-drine/theodrenaline results in a rapid haemodynamic effect on blood pressure without affecting heart rate to a clinically significant extent.
- Male gender, heart failure and the previous administration of beta-blocking agents negatively affect the effectiveness of cafe-drine/theodrenaline.
- Prospective studies to characterise the effect of cafe-drine/theodrenaline in defined patient populations are warranted.

Corresponding address



Prof. Dr. A. R. Heller
 Department of Anaesthesia and Intensive Care Medicine
 Department of Anesthesiology and Critical Care Medicine
 Medizinische Fakultät Carl Gustav Carus
 Technische Universität Dresden
 Fetscherstr. 74, 01307 Dresden
 axel.heller@uniklinikum-dresden.de

Acknowledgements. This study was funded solely from institutional sources. Author Axel R. Heller received project funding (REF 13) from AWD. pharma GmbH & Co. KG, Dresden, Germany. Editorial assistance for manuscript preparation was provided by Physicians World Europe GmbH, Mannheim, Germany, with financial support from Teva GmbH, Ulm, Germany.

Compliance with ethical guidelines

Disclaimers. This work represents part of author Julia Heger's doctoral thesis.

Open Access. This article is distributed under the terms of the Creative Commons Attribution License which permits any use, distribution, and reproduction in any medium, provided the original author(s) and the source are credited.

Conflict of interest. Julia Heger, Marcelo Gama de Abreu, Michael P. Müller declare no conflict of interest.

References

1. Aniset L, Konrad C, Schley M (2006) Ephedrine as alternative to Akrinor in regional obstetric anaesthesia. *Anaesthesist* 55:784–790
2. Babiker FA, Lips D, Meyer R, Delvaux E, Zandberg P, Janssen B, van Eys G, Grohe C, Doevendans PA (2006) Estrogen receptor {beta} protects the murine heart against left ventricular hypertrophy. *Arterioscler Thromb Vasc Biol* 26:1524–1530
3. Brandstrup B, Tonnesen H, Beier-Holgersen R, Hjortso E, Ording H, Lindorff-Larsen K, Rasmussen MS, Lannig C, Wallin L, Iversen LH, Gramkow CS, Okholm M, Blemmer T, Svendsen PE, Rottensen HH, Thage B, Riis J, Jeppesen IS, Teilmann D, Christensen AM, Graungaard B, Pott F (2003) Effects of intravenous fluid restriction on postoperative complications: comparison of two perioperative fluid regimens: a randomized assessor-blinded multicenter trial. *Ann Surg* 238:641–648
4. Buggy DJ, Power CK, Meeke R, O'Callaghan S, Moran C, O'Brien GT (1998) Prevention of spinal anaesthesia-induced hypotension in the elderly: i.m. methoxamine or combined hetastarch and crystalloid. *Br J Anaesth* 80:199–203
5. Carl M, Alms A, Braun J, Dongas A, Erb J, Goetz A, Gopfert M, Gogarten W, Grosse J, Heller A, Heringlake M, Kastrop M, Kroner A, Loer S, Marggraf G, Markewitz A, Reuter M, Schmitt DV, Schirmer U, Wiesenack C, Zwissler B, Spies C (2007) Guidelines for intensive care in cardiac surgery patients: haemodynamic monitoring and cardio-circulatory treatment guidelines of the German Society for Thoracic and Cardiovascular Surgery and the German Society of anaesthesiology and intensive care medicine. *Thorac Cardiovasc Surg* 55:130–148
6. Clemens KE, Quednau I, Heller AR, Klaschik E (2010) Impact of cafe-drine/theodrenaline (Akrinor(R)) on therapy of maternal hypotension during spinal anaesthesia for Cesarean delivery: a retrospective study. *Minerva Ginecol* 62:515–524
7. Deakin CD, Nolan JP, Soar J, Sunde K, Koster RW, Smith GB, Perkins GD (2010) European Resuscitation Council Guidelines for Resuscitation 2010 Section 4. Adult advanced life support. *Resuscitation* 81:1305–1352

8. Fowler MB, Laser JA, Hopkins GL, Minobe W, Bris-tow MR (1986) Assessment of the beta-adrener-gic receptor pathway in the intact failing human heart: progressive receptor down-regulation and subsensitivity to agonist response. *Circulation* 74:1290–1530
9. Hahn N, Sternitzke N, Malotki B, Raqué B, Eichelkraut W, Forneck G (1985) Der Einfluß von Akrinor auf die Hämodynamik und die Myokard-durchblutung bei partiell ischämiegeschädigtem Herzen (kardiogener Schock). Akute Versuche am narkotisierten Hund. *Herz Kreislauf* 9:464
10. Hartmann B, Junger A, Klase J, Benson M, Jost A, Banzhaf A, Hempelmann G (2002) The incidence and risk factors for hypotension after spinal anes-thesia induction: an analysis with automated data collection. *Anesth Analg* 94:1521
11. Heller A, Grosser KD (1974) Hämodynamische Un-tersuchungen an Infarktkranken nach intravenöser Applikation von Akrinor. *Med Welt* 25:1890–1892
12. Heller AR, Litz RJ, Djonlagic I, Manseck A, Koch T, Wirth MP, Albrecht DM (2000) Combined anes-thesia with epidural catheter. A retrospective analy-sis of the perioperative course in patients ungoing radical prostatectomy. *Anaesthesist* 49:949–959
13. Heller AR, Radke J, Koch T (2008) Proof of effica-cy and dose-response relationship of Akrinor® in patients during general and regional anaesthesia. *Anasth Intensivmed* 49:308–317
14. Klase J, Junger A, Hartmann B, Benson M, Jost A, Banzhaf A, Kwapisz M, Hempelmann G (2003) Dif-fering incidences of relevant hypotension with combined spinal-epidural anaesthesia and spinal anaesthesia. *Anesth Analg* 96:1491
15. Klein O (1964) Zur Behandlung des akuten Kre-islauversagens in der operativen Medizin. *Med Klinik* 59:1879–1882
16. Koch T, Wenzel V (2006) Alte Medikamente und neue Zulassungsverfahren: Akrinor bleibt verkehrsfähig und ein Nachzulassungsantrag für Arginin Vasopressin ist gestellt. *Anaesthesist* 55:708–710
17. Morgan P (1994) The role of vasopressors in the management of hypotension induced by spinal and epidural anaesthesia. *Can J Anaesth* 41:404–413
18. Müller H, Brähler A, Börner U, Boldt J, Stoyanov M, Hempelmann G (1985) Hämodynamische Verän-derungen nach der Bolusgabe verschiedener Va-sopressiva zur Blutdruckstabilisierung bei Peridu-ralanästhesie. *Reg Anaesth* 8:43–49
19. Panousis P, Heller AR, Koch T, Litz RJ (2009) Epidu-ral ropivacaine concentrations for intraoperative analgesia during major upper abdominal surgery: a prospective, randomized, double-blinded, place-bo-controlled study. *Anesth Analg* 108:1971–1976
20. Ponnudurai RN, Koneru B, Akhtar SA, Wachsberg RH, Fisher A, Wilson DJ, de la Torre AN (2005) Vaso-pressor administration during liver transplant sur-gery and its effect on endotracheal reintubation rate in the postoperative period: a prospective, randomized, double-blind, placebo-controlled tri-al. *Clin Ther* 27:192–198
21. Rettig G, Sternitzke N, Schieffer H, Hoffmann W, Bette L (1976) Einfluß einer blutdruckwirksamen Substanz auf die Stoffwechselformate im Blut bzw. Serum. *Arzneimittelforschung* 26:1223–1227
22. Sakai K, Yasuda K, Taira N, Hashimoto K (1969) Al-pha-adrenergic blocking action of norephedrinet-heophylline (NET) observed in the renal vascular response. *Jpn J Pharmacol* 19:194–198
23. Stachenfeld NS, Taylor HS (2004) Effects of estro-gen and progesterone administration on extracel-lular fluid. *J Appl Physiol* 96:1011–1018
24. Sternitzke N, Schieffer H, Hoffmann W, Bette L (1976) Modification of the cardiovascular-dynamic effect of Akrinor following the blockade of adrenergic beta receptors with propranolol. *Verh Dtsch Ges Inn Med* 82(Pt 2):1132–1135
25. Sternitzke N, Schieffer H, Rettig G, Bette L (1984) Die Beeinflussung der Herz-Kreislauf-Dynamik durch die Theophyllin-Verbindung Cafedrin und Theodrenalin sowie durch ihre Kombination. *Herz Kreislauf* 8:401–412
26. Usichenko TI, Foellner S, Gruending M, Feyerherd F, Lehmann C, Wendt M, Pavlovic D (2006) Akrinor-induced relaxation of pig coronary artery in vitro is transformed into alpha 1-adrenoreceptor-medi-ated contraction by pretreatment with propranolol. *J Cardiovasc Pharmacol* 47:450–455
27. Veering BT (2006) Hemodynamic effects of central neural blockade in elderly patients. *Can J Anaesth* 53:117–121
28. Yap JC, Critchley LA, Yu SC, Calcroft RM, Derrick JL (1998) A comparison of three fluid-vasopres-sor regimens used to prevent hypotension during subarachnoid anaesthesia in the elderly. *Anaesth Intensive Care* 26:497–502



Kommentieren Sie diesen Beitrag auf springermedizin.de

► Geben Sie hierzu den Beitragstitel in die Suche ein und nutzen Sie anschließend die Kommentarfunktion am Beitragsende.

Situation ländlicher Kliniken ist kritisch

Rund 44% aller ländlichen Krankenhäuser schreiben Verluste. Nur etwas mehr als ein Drittel erzielt positive Ergebnisse. Gut 40% der Kliniken erwarten für 2015 eine weitere Verschlechterung ihrer Lage. Das ist das Ergebnis einer Studie der BDO AG Wirtschaftsprüfungsgesellschaft in Zusammenarbeit mit dem Deutschen Krankenhausinstitut (DKI). Anhaltender Kostendruck, Investitionsstau, Fachkräftemangel und demographischer Wandel verursachen auf dem Land weit größere Probleme als in Großstädten und Ballungsgebieten. Die Sicherung der Wirtschaftlichkeit, der Erhalt der Investitionsfähigkeit und der sich verschärfende Fachkräftemangel sind derzeit die größten Herausforderungen für die ländlichen Krankenhäuser. Hier sind innovative Konzepte und ein tiefgreifender Strukturwandel gefragt. Dabei wächst die Bedeutung gerade der ländlichen Kliniken derzeit signifikant, denn Defizite in der ambulanten ärztlichen Versorgung sorgen für steigende Patientenzahlen in den Notaufnahmen. Wichtig in der aktuellen Lage sind den befragten Krankenhäusern gesundheitspolitische Strukturmaßnahmen für den ländlichen Raum, wie etwa der Ausbau von Kliniken zu regionalen Gesundheitszentren, die Versorgungsprozesse sektorübergreifend steuern und integrieren. Den höchsten Anteil ländlicher Krankenhäuser haben die östlichen Bundesländer (Mecklenburg-Vorpommern 97%, Thüringen 90%, Brandenburg 86%, Sachsen-Anhalt 76%, Sachsen 96%). Auch in Schleswig-Holstein stellen sie mit 69% die Mehrzahl der Kliniken, ebenso in Niedersachsen mit 54%. Gerade dort stehen die ländlichen Krankenhäuser aktuell vor den größten Schwierigkeiten.

Quelle: BDO, www.bdo.de