

Erratum to: Inequalities of health indicators for policy makers: six hints

N. Speybroeck · S. Harper · D. de Savigny ·
C. Victora

Published online: 15 August 2012
© Swiss School of Public Health 2012

Erratum to: Int J Public Health (2012)
DOI 10.1007/s00038-012-0386-5

In Fig. 1, right part, the data for Namibia and India was interchanged. Correctly, the Relative Inequalities are higher in Namibia than in India as described in the text.

The correct Fig. 1 reads as follows:

The online version of the original article can be found under
doi:[10.1007/s00038-012-0386-5](https://doi.org/10.1007/s00038-012-0386-5).

N. Speybroeck (✉)
Institute of Health and Society (IRSS),
Université catholique de Louvain, Brussels, Belgium
e-mail: Niko.Speybroeck@uclouvain.be

S. Harper
Department of Epidemiology,
Biostatistics and Occupational Health,
McGill University, Montreal, Canada
e-mail: sam.harper@mcgill.ca

D. de Savigny
Swiss Tropical and Public Health Institute,
University of Basel, Basel, Switzerland
e-mail: D.deSavigny@unibas.ch

C. Victora
Federal University of Pelotas, Pelotas, Brazil
e-mail: cvictora@gmail.com

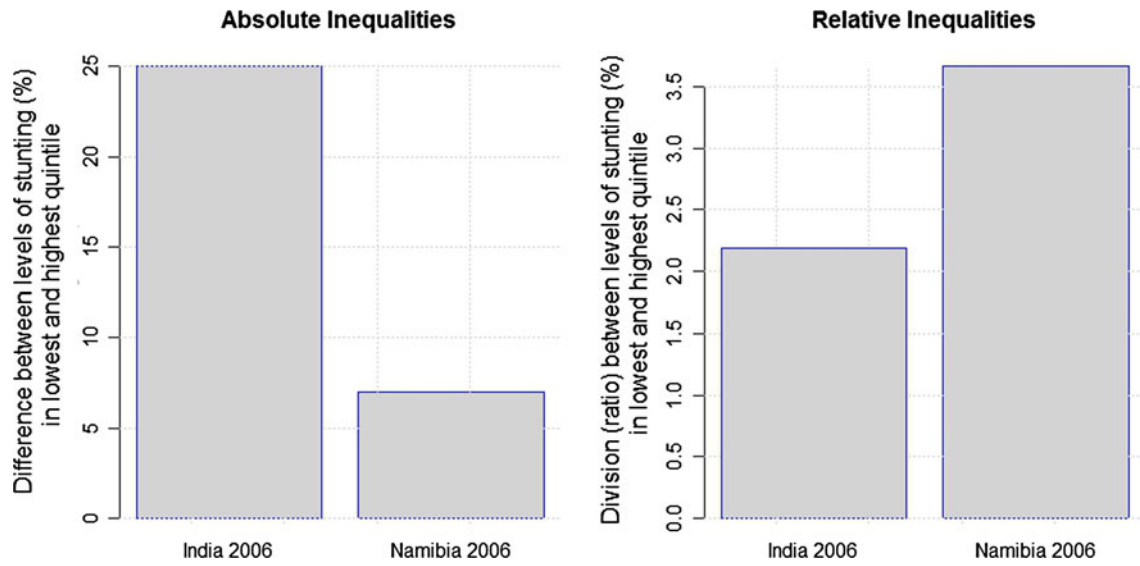


Fig. 1 Absolute (difference between levels in lowest and highest quintile) and relative inequalities (division between levels in lowest and highest income quintile) in malnutrition (stunting) in India (2006) and Namibia (2006). Source: Demographic and Health Surveys