




Correction to: Adamts17 is involved in skeletogenesis through modulation of BMP-Smad1/5/8 pathway

Takeshi Oichi¹ · Yuki Taniguchi¹ · Kazuhito Soma¹ · Yasushi Oshima¹ · Fumiko Yano² · Yoshifumi Mori³ · Ryota Chijimatsu² · Joo-ri Kim-Kaneyama⁴ · Sakae Tanaka¹ · Taku Saito^{1,2} 

Published online: 16 October 2019
© Springer Nature Switzerland AG 2019

Correction to: Cellular and Molecular Life Sciences
<https://doi.org/10.1007/s00018-019-03188-0>

In the published article, the Fig. 4a was published incorrectly. The correct Fig. 4a is given below.

The original article can be found online at <https://doi.org/10.1007/s00018-019-03188-0>.

✉ Taku Saito
tasaitou-tyk@umin.ac.jp

¹ Sensory and Motor System Medicine, The University of Tokyo, 7-3-1 Hongo, Bunkyo-ku, Tokyo 113-8655, Japan

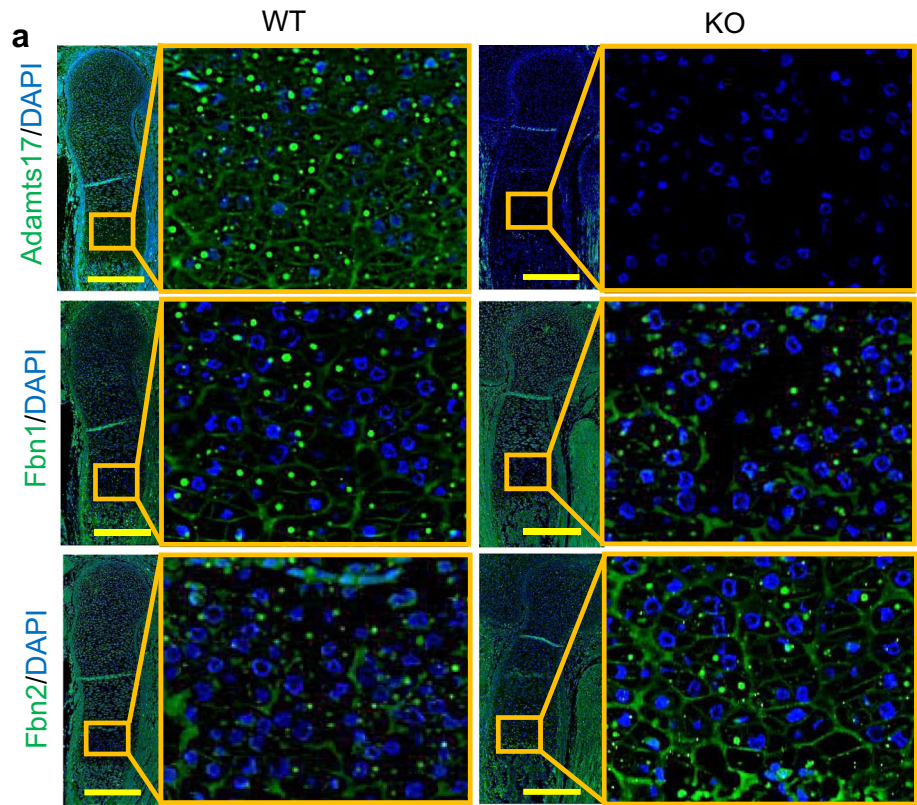
² Bone and Cartilage Regenerative Medicine, Faculty of Medicine, The University of Tokyo, 7-3-1 Hongo, Bunkyo-ku, Tokyo 113-8655, Japan

³ Division of Oral Anatomy, Department of Human Development and Fostering, Meikai University School of Dentistry, 1-1 Keyakidai, Sakado 350-0283, Saitama, Japan

⁴ Department of Biochemistry, Showa University School of Medicine, 1-5-8 Hatanodai, Shinagawa-ku, Tokyo 142-8555, Japan

Before correction

Fig. 4 a Immunofluorescent staining of Adamts17, Fibrillin-1 (Fbn1), and Fibrillin-2 (Fbn2) in humeral distal growth plates of WT mice at E16.5. The inset box in the left panels indicates the location of the enlarged image shown on the right panels. Scale bars, 300 μ m



After correction

Fig. 4 a Immunofluorescent staining of Adamts17, Fibrillin-1 (Fbn1), and Fibrillin-2 (Fbn2) in the humeral distal growth plates of WT and KO mice at E16.5. The inset box in the left panels indicates the location of the enlarged image shown on the right panels. Scale bars, 300 μ m

