

“A miniature probe enables clear demonstration of the cystic duct during laparoscopic cholecystectomy,” by T. Otani, Y. Maruyama, H. Shinkai, Y. Kawamura, M. Ri, T. Kitagawa, T. Kaji, M. Makuuchi (Surg Endosc 1998; 12: 1186–1188)

Reference 8 should have read as follows:

8. Otani T, Kaji T, Fukasawa T, Osawa T, Seki F, Yokoyama T, Kawamura Y, Makuuchi M (1998) A flower-shaped cannula for three-incision laparoscopic cholecystectomy. Surg Endosc 12: 179–180

Figures from this article are reprinted here.

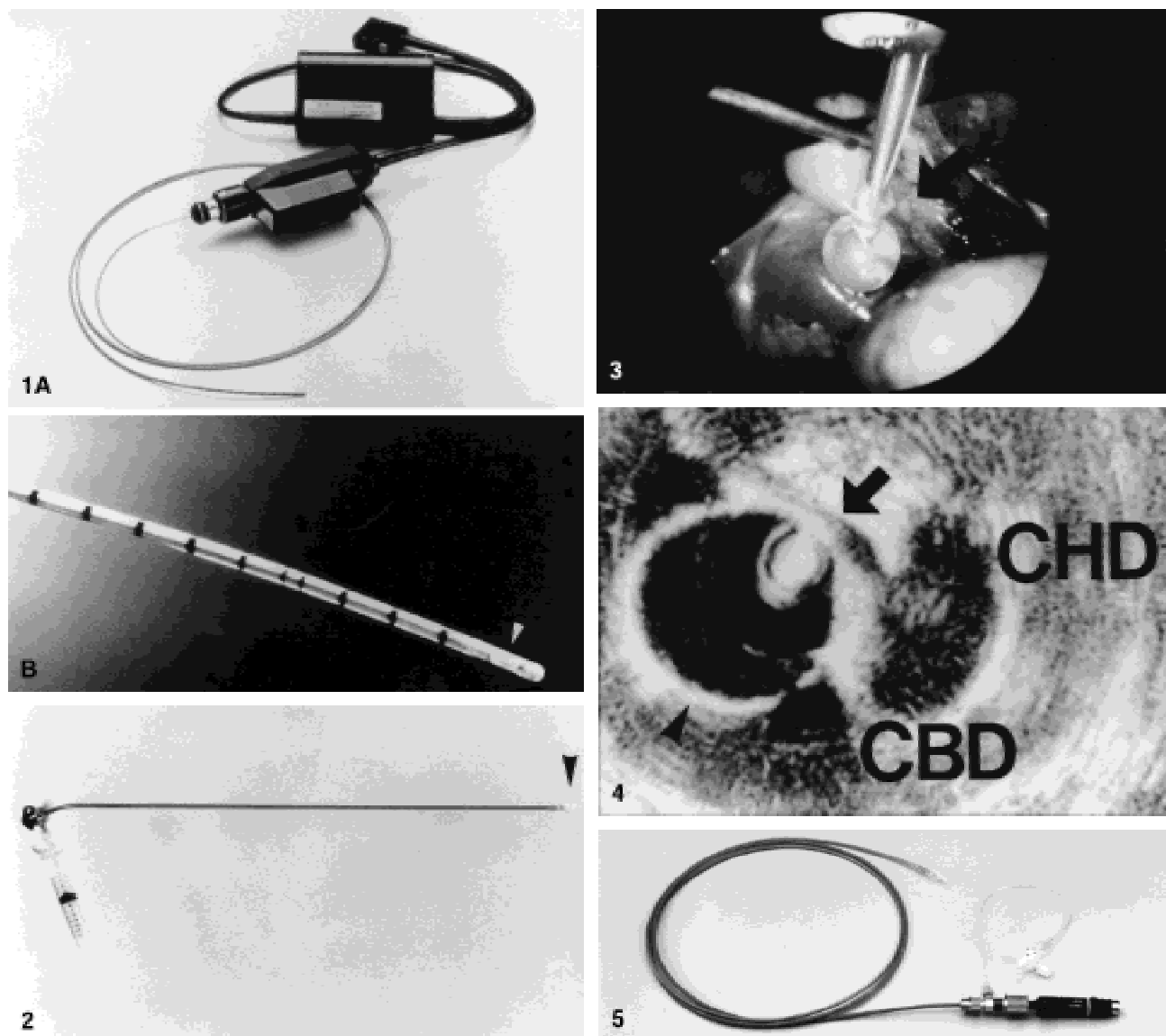


Fig. 1. **A** The flexible miniature probe. **B** The tip of the probe. The scanning plane is 3 mm from the vertical end (arrowhead).

Fig. 2. The hard metal sheath with attached balloon (arrowhead).

Fig. 3. Intraoperative view obtained via the laparoscope. The miniature probe, introduced into the hard metal sheath, can be seen through the water balloon. The arrow indicates a partly exposed presumed cystic duct.

Fig. 4. An ultrasonogram obtained with the radial-type miniature probe. The common bile duct (CBD), common hepatic duct (CHD), and cystic duct (arrow) are visualized on a single plane. The arrowheads indicate the balloon.

Fig. 5. The introduction of a new type of balloon has made the radial type fine probe easier to use.