

Fingerprinting Higgs suspects at the LHC

J.R. Espinosa,^a C. Grojean,^b M. Mühlleitner^c and M. Trott^b

^a*ICREA at IFAE, Universitat Autònoma de Barcelona,
08193 Bellaterra, Barcelona, Spain*

^b*Theory Division, Physics Department, CERN,
CH-1211 Geneva 23, Switzerland*

^c*Institute for Theoretical Physics, Karlsruhe Institute of Technology,
D-76128 Karlsruhe, Germany*

E-mail: jose.ramon.espinosa.sedano@cern.ch,

Christophe.Grojean@cern.ch, maggie@particle.uni-karlsruhe.de,

michael.trott@cern.ch

ABSTRACT: We outline a method for characterizing deviations from the properties of a Standard Model (SM) Higgs boson. We apply it to current data in order to characterize up to which degree the SM Higgs boson interpretation is consistent with experiment. We find that the SM Higgs boson is consistent with the current data set at the 82% confidence level, based on data of excess events reported by CMS and ATLAS, which are interpreted to be related to the mass scale $m_h \sim 124 - 126$ GeV, and on published CL_s exclusion regions. We perform a global fit in terms of two parameters characterizing the deviation from the SM value in the gauge and fermion couplings of a Higgs boson. We find two minima in the global fit and identify observables that can remove this degeneracy. An update for Moriond 2012 data is included in the appendix, which finds that the SM Higgs boson is now consistent with the current data set at only the 89% confidence level (which corresponds to $\sim 2\sigma$ tension compared to the best fit point).

KEYWORDS: Higgs Physics, Beyond Standard Model

ARXIV EPRINT: [1202.3697](https://arxiv.org/abs/1202.3697)

Contents

1	Introduction	1
2	The effective theory	2
3	Fitting enhanced cross sections	4
3.1	Results	7
4	Incorporating EWPD	9
5	Discussion	10
6	Conclusions	12
A	Fitting assumptions	13
B	Moriond 2012 update	15

1 Introduction

The main goal of the LHC physics program is to unravel the origin of electroweak symmetry breaking, with the leading explanation being the Standard Model Higgs boson. In considering the SM Higgs hypothesis, or more generally the correct description of electroweak symmetry breaking (EWSB) as realized in nature, it is important to synthesize the experimental results which are determined to date, in terms of symmetries that must be (at least approximately) respected in a successful effective description of physics at the weak scale.

Probes of the mechanism of electroweak symmetry breaking can be summarized in terms of tests of the properties of the W^\pm , Z bosons through electroweak precision data observables (EWPD), probes of the low energy flavour changing signatures of weak scale physics, and direct searches. The results of the first two of these probes indicate that a viable theory of EWSB can reduce parameter tuning by adopting an approximate $SU(2)_c$ custodial symmetry to comply with EWPD [1–3], and imposing approximate Minimal Flavour Violation (MFV) [4–8], in order to be robustly consistent with the results of the flavour physics program. The SM Higgs sector with renormalizable couplings to the fermions is exactly consistent with MFV by definition, but it is only approximately $SU(2)_c$ symmetric.

Recently, ATLAS and CMS have reported significant exclusion limits¹ for a Standard Model Higgs boson over a broad range of masses. The current exclusion regions reported by

¹These values for exclusions and the data used in the body of the paper correspond to pre-Moriond 2012 values. The update of the fit for Moriond 2012 data is in appendix B.

ATLAS [9] are $112.7 \leq m_h \leq 115.5$ GeV, $131 \leq m_h \leq 237$ GeV and $251 \leq m_h \leq 468$ GeV at 95% confidence level (CL). While the Higgs mass region excluded by CMS [10] at this CL is $127 \leq m_h \leq 600$ GeV. There is also a suggestive combination of experimental hints in multiple final state signatures pointing in both experiments to a Higgs mass $m_h \simeq 124 - 126$ GeV. Although certainly not conclusive, the evidence for a light resonance with this mass scale and approximately SM Higgs-like properties has also been augmented by the observation of 7 events (compared to an expected background of 2 events) within one GeV of 124 GeV in the $pp \rightarrow hjj \rightarrow \gamma\gamma jj$ channel at CMS [11], which would correspond to a SM Higgs boson produced through vector boson fusion. We will use these experimental results in this paper to determine to what degree current data is selecting a SM Higgs boson or not.

These experimental hints, along with the lack of any clear evidence of new states discovered to date at the LHC are suggestive that an effective theory of the EWSB sector, including a light scalar resonance and the approximate symmetries of $SU(2)_c$ as well as MFV, is currently an appropriate description of the data. We will examine recent results from the LHC in this framework and ascertain up to what degree experiment is selecting a SM Higgs doublet at present. We perform a broad analysis of this question in sections II and III in terms of two parameters characterizing the deviation from the SM value in the gauge and fermion couplings of a Higgs boson. We find two nearly degenerate minima in the global fit. The effective Lagrangian we employ emerges naturally in composite Higgs scenarios. We comment on their interpretation in terms of current data.

The LHC results should be interpreted in the context of the indirect evidence for the SM Higgs and its properties in EWPD. We examine the consistency of the results of our global fit to LHC Higgs-like data and EWPD in section 4.

Finally, in section 4, we discuss how future measurements can be presented in a manner that can more precisely and efficiently refine the understanding of such an effective theory with the aim of clarifying if the correct description of EWSB is the SM Higgs mechanism or not. In particular we point out the utility of ratios of best fit signal strengths which can be provided by the experimental collaborations and which have the ability to resolve the degeneracy in the two best fit regions we find when examining LHC Higgs-like data. This is due to the fact that, although an individual experimental signal can be faked by a Higgs-like degree of freedom, it is difficult for such a degree of freedom to simultaneously reproduce the Higgs predictions in other channels with different dependencies on effective couplings.

2 The effective theory

We consider an effective Lagrangian with a light scalar resonance, denoted as h in the following, that includes the Goldstone bosons associated with the breaking of $SU(2) \times U(1)_Y \rightarrow U(1)_Q$ and the SM field content. A minimal description of these degrees of freedom is given by an effective chiral Lagrangian with a nonlinear realization of the $SU(2) \times U(1)_Y$ symmetry. The Goldstone bosons eaten by the W^\pm, Z bosons are denoted by π^a , where $a = 1, 2, 3$, and are grouped as

$$\Sigma(x) = e^{i\sigma_a \pi^a / v}, \quad (2.1)$$

with $v = 246$ GeV. The $\Sigma(x)$ field transforms linearly under $SU(2)_L \times SU(2)_R$ as $\Sigma(x) \rightarrow L \Sigma(x) R^\dagger$ where L, R indicate the transformation on the left and right under $SU(2)_L$ and $SU(2)_R$, respectively, while $SU(2)_c$ is the diagonal subgroup of $SU(2)_L \times SU(2)_R$, under which the scalar resonance h transforms as a singlet. A derivative expansion of such a theory is given by [12–14]

$$\begin{aligned} \mathcal{L} &= \frac{1}{2}(\partial_\mu h)^2 - V(h) + \frac{v^2}{4} \text{Tr}(D_\mu \Sigma^\dagger D^\mu \Sigma) \left[1 + 2a \frac{h}{v} + b \frac{h^2}{v^2} + b_3 \frac{h^3}{v^3} + \dots \right], \\ &\quad - \frac{v}{\sqrt{2}} (\bar{u}_L^i \bar{d}_L^{\bar{j}}) \Sigma \left[1 + c \frac{h}{v} + c_2 \frac{h^2}{v^2} + \dots \right] \begin{pmatrix} y_{ij}^u u_R^j \\ y_{ij}^d d_R^j \end{pmatrix} + h.c., \quad \text{with} \\ V(h) &= \frac{1}{2} m_h^2 h^2 + \frac{d_3}{6} \left(\frac{3m_h^2}{v} \right) h^3 + \frac{d_4}{24} \left(\frac{3m_h^2}{v^2} \right) h^4 + \dots . \end{aligned} \tag{2.2}$$

Here we have adopted for later convenience the notation of composite models [12–14]. Minimal Flavour Violation dictates that the sole source of flavour violation are the Yukawa couplings and that h is a singlet in flavour space and that its couplings to fermions (c, c_2, \dots) are flavour-universal. (Note that MFV is also compatible with c_i proportional to a combination of the SM Yukawa matrices.) We adopt this assumption, although we note that the LHC data is essentially only sensitive to flavour violation linked to the large top coupling (scaled by c from its SM value) at present.

The $SU(2) \times U(1)_Y \rightarrow U(1)_Q$ subgroup of $SU(2)_L \times SU(2)_R$ is weakly gauged in such theories. We will fit the current data including the leading linear Higgs-like coupling effects in the Lagrangian of eq. (2.2). We will neglect, however, dimension five operators $h G^{\mu\nu} G_{\mu\nu}$, $h W^{\mu\nu} W_{\mu\nu}$, $h B^{\mu\nu} B_{\mu\nu}$ and other higher dimension operators in the fit,² focusing on the effect of a and c . This can be justified by UV model building, for example in the composite Higgs case. In general, the coefficients a, b, b_3, c, c_2, \dots are arbitrary numerical parameters subject to experimental constraints. Model building in the UV of this effective theory fixes relations between the parameters.

The completion of the theory with a SM Higgs boson fixes $a = b = c = d_3 = d_4 = 1$ and $b_3 = c_2 = 0$, and higher order terms in the polynomial expansion of the h field vanish. In this case h becomes part of a linear multiplet

$$U = \left(1 + \frac{h}{v} \right) \Sigma, \tag{2.3}$$

reducing the theory to the SM Higgs boson Lagrangian where the growth in \sqrt{s} of the high energy scattering cross section $W_L W_L \rightarrow W_L W_L$ is exactly cancelled. For other choices of these parameters the growth in \sqrt{s} of high energy scattering processes is only moderated. First we will explore to what degree a light scalar resonance leading to the current experimental excesses reported by CMS and ATLAS is consistent with a SM Higgs boson interpretation or not.³ Note that the fermiophobic Higgs hypothesis is frequently

²See ref. [15] for a discussion on the impact of these operators on Higgs production.

³Many proposals and discussions on establishing the correctness of the SM Higgs hypothesis exist in the literature, including refs. [15–25].

interpreted to correspond to the singular point where $c = 0, a = 1$, while a more general interpretation of this hypothesis is $c = 0$ with a unfixed, but constrained by current data.

3 Fitting enhanced cross sections

The experimental hints for the Higgs boson that have been reported to date in each channel individually provide only marginal evidence. The best fit values to the signal strengths $\mu = (\sigma \times \text{Br})/(\sigma \times \text{Br})_{SM}$ for particular Higgs masses are summarized in table 1.

In table 1 we also give in the second column the expected mass sensitivity of the various experimental signatures as well as in the third column the best fit value for μ together with the 1σ experimental error and the 95% confidence level limit. If the mass resolution is not explicitly quoted, as in the $pp \rightarrow ZZ^* \rightarrow l^+l^-l^+l^-$ and the $pp \rightarrow WW^* \rightarrow l^+\nu l^-\bar{\nu}$ results given by ATLAS, we display as an estimate the mass sensitivity for these channels as quoted by CMS. Since the mass sensitivity is such that the best fit masses can reasonably be interpreted to overlap, we do not introduce a correction factor in the fit to shift to a common mass value. We also display, in column two, the local significance when given by the experiments. In column four we schematically list the leading sensitivity of the signal in terms of the cross section rescaling and the effective branching ratios to final states XX given by $\text{Br}_{XX}[a, c]$. The actual production cross section rescalings are combinations including subdominant channels, that can introduce further dependence on (a, c) , see section III.A. We do not include a look elsewhere effect as we are performing a global fit for a particular mass value $m_h \approx 124 \text{ GeV}$. The CMS photon measurements are split up in accordance with ref. [10]. The $\gamma\gamma$ events are classified by the conversion of the photon in the crystal - defining a parameter R_9 - and their location in the detector, being endcap - e or barrel - b. The data we fit to also have associated exclusion curves. We take these exclusions into account by another procedure described in the text. Note that the $\tau^+\tau^-$ searches at ATLAS are included in the exclusion analysis but not fit to in the signal strength best fit as the corresponding experimental error is not available.

The excesses of events with *approximately* the same mass scale in various channels are suggestive of a resonance, that could be interpreted as evidence of a light Higgs boson. We will assume that these excesses of events correspond to the same underlying physics and fit the data to discern the degree up to which the excesses are consistent with a SM Higgs boson interpretation.⁴ Our procedure to perform a global fit to the current data is as follows.

First we fit to reported values of μ^i including the deviations in the SM predictions by allowing the parameters a and c to deviate from their SM values of 1. We include in the fits the effects of modified production cross sections and branching ratios due to the rescaling of the SM couplings by the parameters a and c . In order to carry out these fits we are required to make a set of assumptions, which are summarized and discussed in the appendix. We will illustrate the sensitivity of the fit to the various assumptions by varying them in the results presented in section 3.1.

⁴The local significance quoted in table 1 should be taken as a reminder to the reader of the very marginal situation of the statistical significance of these signals at present.

Channel [Exp]	m_h [GeV] (Local Significance)	μ (μ_L)	Scaling to SM
$pp \rightarrow \gamma\gamma$ [ATLAS]	126.5 ± 0.7 (2.8σ) [26]	$2_{-0.7}^{+0.9}$ [27] (2.6)	$\sim c^2 \text{Br}_{\gamma\gamma}[a, c]$
$pp \rightarrow ZZ^* \rightarrow \ell^+ \ell^- \ell^+ \ell^-$ [ATLAS]	$126 \pm \sim 2\%$ (2.1σ) [26]	$1.2_{-0.8}^{+1.2}$ [27] (4.9)	$\sim c^2 \text{Br}_{ZZ}[a, c]$
$pp \rightarrow WW^* \rightarrow \ell^+ \nu \ell^- \bar{\nu}$ [ATLAS]	$126 \pm \sim 20\%$ (1.4σ) [26]	$1.2_{-0.8}^{+0.8}$ [27] (3.4)	$\sim c^2 \text{Br}_{WW}[a, c]$
$pp \rightarrow \gamma\gamma jj$ [CMS]	$124 \pm 3\%$ [10, 11]	$3.7_{-1.8}^{+2.5}$ [11]	$\sim a^2 \text{Br}_{\gamma\gamma}[a, c]$
$pp \rightarrow \gamma\gamma$ [CMS, b, $R_9^{\text{min}} > 0.94$]	$124 \pm 3\%$ [10, 11]	$1.5_{-1.0}^{+1.1}$ [11]	$\sim c^2 \text{Br}_{\gamma\gamma}[a, c]$
$pp \rightarrow \gamma\gamma$ [CMS, b, $R_9^{\text{min}} < 0.94$]	$124 \pm 3\%$ [10, 11]	$2.1_{-1.4}^{+1.5}$ [11]	$\sim c^2 \text{Br}_{\gamma\gamma}[a, c]$
$pp \rightarrow \gamma\gamma$ [CMS, e, $R_9^{\text{min}} > 0.94$]	$124 \pm 3\%$ [10, 11]	$0.0^{+2.9}$ [11]	$\sim c^2 \text{Br}_{\gamma\gamma}[a, c]$
$pp \rightarrow \gamma\gamma$ [CMS, e, $R_9^{\text{min}} < 0.94$]	$124 \pm 3\%$ [10, 11]	$4.1_{-4.1}^{+4.6}$ [11]	$\sim c^2 \text{Br}_{\gamma\gamma}[a, c]$
$pp \rightarrow ZZ^* \rightarrow \ell^+ \ell^- \ell^+ \ell^-$ [CMS]	$126 \pm 2\%$ (1.5σ) [11, 28]	$0.5_{-0.7}^{+1.0}$ [10] (2.7)	$\sim c^2 \text{Br}_{ZZ}[a, c]$
$pp \rightarrow WW^* \rightarrow \ell^+ \nu \ell^- \bar{\nu}$ [CMS]	$126 \pm 20\%$ [10, 29]	$0.7_{-0.6}^{+0.4}$ [10] (1.8)	$\sim c^2 \text{Br}_{WW}[a, c]$
$pp \rightarrow b\bar{b}$ [CMS]	$124 \pm 10\%$ [10]	$1.2_{-1.7}^{+1.4}$ [10] (4.1)	$\sim a^2 \text{Br}_{b\bar{b}}[a, c]$
$pp \rightarrow \tau\bar{\tau}$ [CMS]	$124 \pm 20\%$ [10]	$0.8_{-1.7}^{+1.2}$ [10] (3.3)	$\sim c^2 \text{Br}_{\tau\bar{\tau}}[a, c]$

Table 1. Summary table of reported signatures with events related to the Higgs mass scale of interest ($m_h \simeq 124$ GeV) where excess events have been reported.

For example, consider the case of the event yield used to construct each μ^i for $pp \rightarrow \gamma\gamma$, which in this discussion we will assume is only produced through gluon fusion. The SM prediction for the Higgs boson producing such events with an integrated Luminosity $\int \mathcal{L} dt$ can be schematically written as

$$\int_{\text{cuts}} \mathcal{L} dt \sigma_{gg \rightarrow h} \text{Br}(h \rightarrow \gamma\gamma). \quad (3.1)$$

We will assume that the effects of the coefficients a, c are to simply rescale the number of events in the various signal cross sections. We neglect small shape differences in the differential distributions that could affect the event yield as (a, c) deviate from $(1, 1)$. Then the integration over luminosity with phase space cuts will essentially cancel in the constructed theoretical prediction for the ratio μ^i . The sole effect of the deviation from $(1, 1)$ for (a, c) will be to generate an excess/suppression of events compared to the SM prediction. This can be directly fit to the reported experimental best fit value for this ratio. This is the procedure we will adopt.

We construct a χ^2 measure for a two parameter fit in the following way. We define the matrix \mathcal{C} as the covariance matrix of the observables, and $\Delta\theta_i$ as a vector of the difference in the observed and predicted value of the ratio, as a function of (a, c) . The χ^2 measure is then given by

$$\chi^2 = (\Delta\theta_i)^T (\mathcal{C}^{-1})_{i,j} (\Delta\theta_j). \quad (3.2)$$

The minimum χ_{min}^2 is determined, and the 65%, 90% and 99% best fit CL regions are given by $\Delta\chi^2 < 2.1, 4.61, 9.21$, respectively, for $\chi^2 = \chi_{\text{min}}^2 + \Delta\chi^2$. The confidence level regions are defined by the cumulative distribution function for a two parameter fit. The matrix \mathcal{C} is taken to be diagonal with the square of the 1σ theory and experimental errors added

in quadrature for each observable in the diagonal element. As correlation coefficients are currently not supplied by the experimental collaborations, off-diagonal correlation coefficients are neglected. For the experimental errors we use the quoted 1σ errors on the reported signal strength. The errors $\delta\mu^i$ for the individual channels i are made symmetric by taking $\delta\mu^i = \sqrt{(\delta\mu^{i+})^2 + (\delta\mu^{i-})^2}/\sqrt{2}$, where $\mu^i = \sigma^i/\sigma_{SM}^i$. For theory predictions of the cross section values and related errors, we use the numbers given on the webpage of the LHC Higgs Cross section Working Group [30] for $m_h = 124\text{ GeV}$ and $\sqrt{s} = 7\text{ TeV}$.⁵ We symmetrize the total cross section error and propagate the error to get a theory error on μ . Taking

$$\mu = \frac{\sum_i r^i(a, c) \sigma^i \times \text{Br}_i(a, c)}{\sum_i \sigma^i \times \text{Br}_{iSM}}, \quad (3.3)$$

with $r^i(a, c)$ the appropriate rescaling factor for each cross section and defining the error on each σ^i to be $\delta\sigma^i$, we determine the error $\delta\mu$ by

$$\delta\mu = \mu \sqrt{\left[\frac{\sqrt{\frac{\sum_i (r^i)^2 (\delta\sigma^i)^2}{\sum_i r^i \sigma^i}}}{\sum_i r^i \sigma^i} - \frac{\sqrt{\frac{\sum_i (\delta\sigma^i)^2}{\sum_i \sigma^i}}}{\sum_i \sigma^i} \right]^2}. \quad (3.4)$$

For each search channel, ATLAS and CMS provide [10, 11, 26, 29] an exclusion upper limit μ_L^i on each ‘signal strength’ so that $\mu^i > \mu_L^i$ is excluded at 95% C.L. This value is reported in table 1. The final exclusion limit μ_L from combining all channels is also provided as a function of the Higgs mass, with a SM Higgs boson mass being excluded whenever $\mu_L < 1$. We obtain such combined limits by a simple χ^2 procedure, solving for μ_L the equation

$$\sum_i \frac{(\mu_L - \hat{\mu})^2}{(\mu_L^i - \hat{\mu})^2} - \sum_i \frac{\hat{\mu}^2}{(\mu_L^i - \hat{\mu})^2} = 1, \quad (3.5)$$

where $\hat{\mu}$ is the average of the individual $\hat{\mu}^i$, the measured signal strengths for each channel (which make μ_L^i larger when they are nonzero).⁶ When there are no excesses (or for the purpose of calculating expected limits) one simply sets $\hat{\mu}^i = 0$, in which case our simple recipe combines in quadrature the limits from different channels. Again we neglect correlations in the measured limits on the signal strengths. In applying this procedure to our case, note that we have mapped the reported CL_s exclusion curve as

$$\mu_{SM}^i \rightarrow \mu^i(a, c) \quad (3.6)$$

through rescaling the production cross sections and the decay widths. The exclusion regions are based on all released Higgs search analysis channels from the experiments given in December 2011 and updated in February 2012, and are comprised of the signals listed in table 1 (plus the ATLAS $h \rightarrow \tau^+\tau^-$ analysis). The results of the fit are dependent on the SM values used for the masses of the known particles, gauge coupling constants in the SM, etc. We summarize the SM inputs, which we have used, in appendix A.

⁵The theory errors are currently subdominant compared to the large experimental uncertainties.

⁶We contrast this semi-empirical approximate formula with a more precise determination of the combined limit in appendix B.

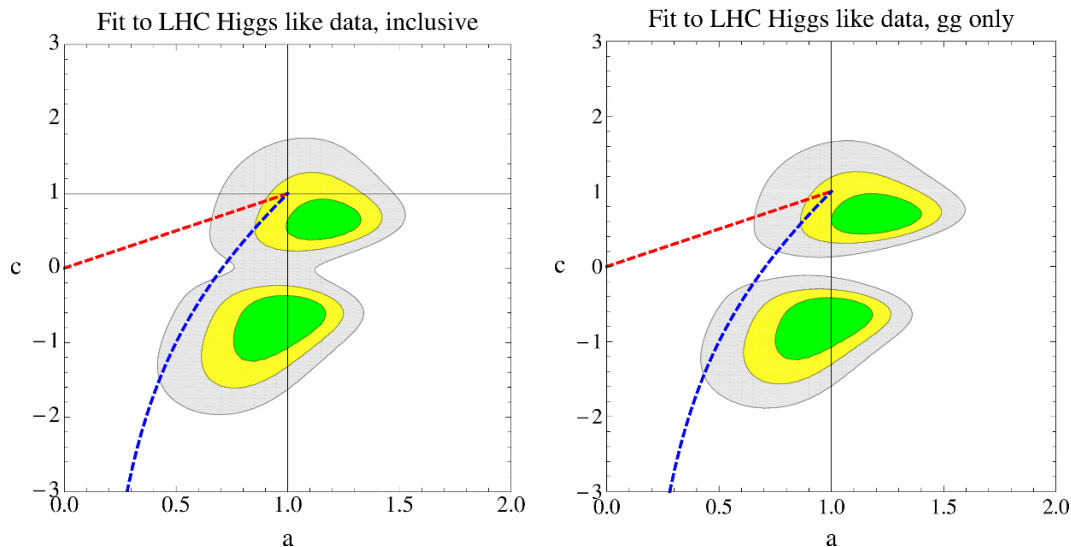


Figure 1. Global fit results in the (a, c) plane for all best fit σ/σ_{SM} values given by ATLAS and CMS. The SM Higgs boson with a linear realization of the EW chiral Lagrangian corresponds to the point $(1, 1)$ and is within the yellow 90% CL region. The 65% and 99% CL regions correspond to the green and light gray shaded regions. The plot on the left includes all production channels, the plot on the right only includes the gg production channel in the signals with inclusive Higgs production, rescaled as described in the text. The $\chi^2/\text{d.o.f} \simeq 0.99$ for the left plot, while $\chi^2/\text{d.o.f} \simeq 1.03$ for the right plot. We also show two lines characterizing the relationship between the parameters a, c in the minimal composite Higgs scenarios of refs. [31, 32], red dashed (for MCHM4) and blue dashed (for MCHM5). In eq. (2.2), rephasing of the Higgs field $h \rightarrow -h$ maps the best fit regions shown to other physically equivalent regions in the (a, c) space.

3.1 Results

Using the above described procedure we perform a global fit to the currently available data, with results shown in figure 1. The global fit results are combined with the exclusion contours in figure 2. The current data is consistent with a SM Higgs boson interpretation which lies on the 82% CL contour. The global quality of the fit is $\chi^2/\text{d.o.f} \approx 1$. There are two best fit regions. For each signal strength to which we fit, there is a mapping from the SM point in (a, c) space, given by $(1, 1)$, to a nearly degenerate point in terms of $\Delta\chi^2$ with differing values of (a, c) . This mapping can be understood as following from the contours of constant production shown in figure 5 which show an approximate $c \leftrightarrow -c$ symmetry in the production of the Higgs and its subsequent branching ratios. This symmetry is broken by the interference of loop diagrams in various channels, with the strongest breaking of this approximate symmetry in the $\gamma\gamma$ final state. The best fit values for the two best fit regions in the inclusive plot are $(0.99, -0.66, 1.99)$ and $(1.2, 0.60, 2.6)$ in terms of (a, c, χ^2_{\min}) . The SM point for comparison is $(1, 1, 5.44)$. It is of interest to determine a means by which the best fit region degeneracy can be resolved. We discuss such an approach in section 5.

Note that in figures 1, 2 we present results which we label as ‘inclusive’ or ‘ gg only’. These fits differ in how the production cross sections are treated. For ‘ gg only’ in the signals with $\gamma\gamma, \tau^+\tau^-$ final states, we only rescale the dominant gluon fusion production chan-

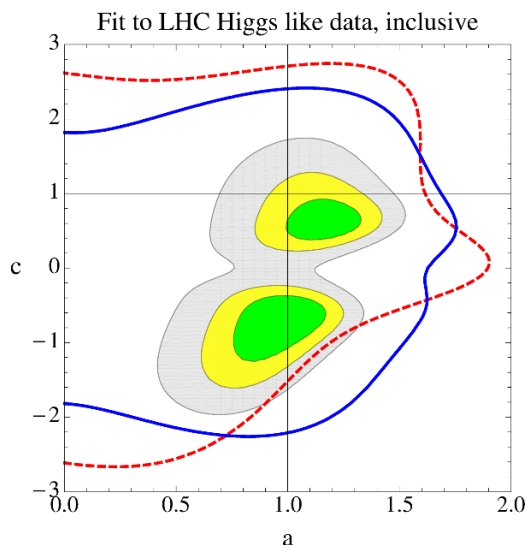


Figure 2. Global fit results in the (a, c) plane for all best fit σ/σ_{SM} values given by ATLAS and CMS, taking into account all production channels. Also shown are the exclusion contours in the (a, c) plane determined by mapping the SM exclusion into an effective exclusion of $(\sigma/\sigma_{SM})[a, c] < 1$. Again the 65, 90, 99% CL regions correspond to the green, yellow and gray regions in the plots. The exclusion curve derived from ATLAS data is given by the red (dashed) line (with the region to the right of the line excluded), the CMS exclusion curve is the solid blue line.

nel, neglecting subdominant channels. While for results labeled as inclusive the following production channels are included for each signal:

- (i) $W^+ W^- / ZZ$ production via gluon fusion and vector boson fusion,
- (ii) $\gamma\gamma$ production via gluon fusion, vector boson fusion (VBF), $t\bar{t}h$ production, and associated production with W^\pm and Z . (Note that the $\gamma\gamma$ events that have associated jets, interpreted to come from VFB, are treated exclusively.)
- (iii) $b\bar{b}$ production is summed over associated $h W^\pm$ and $h Z$ production,
- (iv) $\tau^+ \tau^-$ production is summed over gluon fusion, vector boson fusion, $t\bar{t}h$ production, and associated production with W^\pm and Z . Previous analyses at CMS are reported to only include the VBF initial state as the tagging jets are used to eliminate Drell-Yan $Z \rightarrow \tau^+ \tau^-$ events. The updated results use a modelling of the Drell-Yan spectrum based on measurements of Drell-Yan produced $Z \rightarrow \mu^+ \mu^-$ events, so that the updated analysis is more inclusive.

We do not find dramatic differences in the fits using the two different procedures, and thus are lead to consider our approximations used in performing the rescalings to be satisfactory. See appendix A for a detailed discussion.

As can be inferred from figure 1 and figure 2, the direct fit to the data and the exclusion curves are selecting the same region of parameter space. We also performed exclusive fits to the following subsets of data. We combined the $b\bar{b}$ and $\tau^+ \tau^-$ data for a test of the

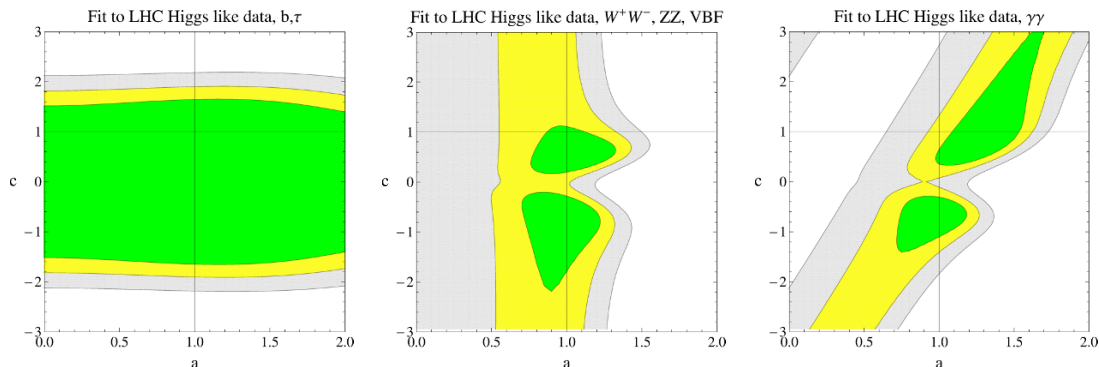


Figure 3. Global fit results in the (a, c) plane for all reported best fit σ/σ_{SM} values given by ATLAS and CMS using subsets of the data. The conventions for the plots are the same as in the previous figures. Fitting the data in subsets degrades the fit. The left figure testing the $b\bar{b}$ and $\tau^+\tau^-$ data essentially is unconstrained with $\chi^2/\text{d.o.f} \simeq 0$, the middle plot with the combination of W^+W^- , ZZ and vector boson fusion based $\gamma\gamma$ has a $\chi^2/\text{d.o.f} \simeq 0.28$ while the right plot based on all $\gamma\gamma$ excesses has a $\chi^2/\text{d.o.f} \simeq 0.62$.

fermion couplings and combined the W^+W^- , ZZ data as well as the vector boson fusion based $\gamma\gamma$ data for a test of anomalous gauge couplings. Furthermore, we did a joint fit to the $\gamma\gamma$ best fit signal strengths. The results are shown in figure 3. As can be inferred from the figures, the data are insensitive to the fermion and gauge couplings in the $\tau\tau$ and $b\bar{b}$ channels, the sensitivity in the combination of the W^+W^- , ZZ data as well as the vector boson fusion based $\gamma\gamma$ data is more significant, with a -roughly- c symmetric region being selected and large enhancements of the gauge boson couplings being disfavoured. The results of the $\gamma\gamma$ fits are most interesting as the interplay of the top and gauge boson loops in the $\gamma\gamma$ decay amplitude select a skewed region in the (a, c) space. One can also see that the $\gamma\gamma$ data are most constraining at present. It cannot be overemphasized that the signal significances being fit to globally, and particularly when fitting to subsets of the data, are marginal. Strong conclusions are premature and the best fit values for $\chi^2/\text{d.o.f}$ in fitting to subsets of the data are poor.

4 Incorporating EWPD

Deviations in the properties of a light scalar resonance from the properties of the SM Higgs boson also affect other low energy precision tests, in particular EWPD, which are sensitive to loop corrections to the gauge boson propagators due to Higgs boson loops as well as the SM gauge bosons loops. If the properties of a scalar deviate from the properties of the SM Higgs in the coupling to the SM gauge bosons, the high energy behavior of the theory is modified, and the decoupling of the longitudinal mode of the EW gauge bosons is no longer exact.

This effect manifests itself through the high energy behavior of the longitudinal degrees of freedom in high energy scattering still growing with energy, and in EWPD through loop diagrams involving the longitudinal degrees of freedom of the gauge bosons [33]. In EWPD, the corrections to the gauge boson propagators can be expressed in terms of shifts of the

parameters STU [34–39] given by

$$\Delta S = \frac{-(1-a^2)}{6\pi} \log\left(\frac{m_h}{\Lambda}\right), \quad \Delta T = \frac{3(1-a^2)}{8\pi \cos^2\theta_W} \log\left(\frac{m_h}{\Lambda}\right), \quad \Delta U = 0. \quad (4.1)$$

Here we have introduced a cutoff scale Λ , which approximately represents the mass of the new states that are required in this framework to *unitarize* longitudinal gauge boson scattering at a scale given by $\Lambda \sim 4\pi v/\sqrt{|1-a^2|}$. For EWPD we use the results of the *Gfitter* collaboration [40]

$$S = 0.02 \pm 0.11, \quad T = 0.05 \pm 0.12, \quad U = 0.07 \pm 0.12. \quad (4.2)$$

And the correlation coefficient matrix is given by

$$C = \begin{pmatrix} 1 & 0.879 & -0.469 \\ 0.879 & 1 & -0.716 \\ -0.469 & -0.716 & 1 \end{pmatrix}. \quad (4.3)$$

We perform joint fits to LHC data and EWPD by adding the corresponding entries to an enlarged covariance matrix (including STU in terms of a) in the global fit. Correlations among EWPD observables are included. We then perform a new global minimization and joint fit. The results are given in figure 4. We have included a correction to STU of the form $(\Delta S, \Delta T, \Delta U) = (0.003, -0.002, -0.0001)$ due to shifting the best fit value of the Higgs mass in these results from 120 GeV to 124 GeV using the exact expression for the one-loop Higgs boson contribution to STU. When a joint fit to current LHC data is combined with EWPD under the assumption that $m_h \sim 124$ GeV and with no other states in the EWPD fit, the tension in the fit slightly increases. The $\chi^2/\text{d.o.f}$ rises to 1.3, with EWPD favouring values of $a > 1$ as the STU parameters do not have vanishing central values for $m_h = 124$ GeV. The allowed regions are consistent with the exclusion curves as shown in figure 4.

5 Discussion

In examining possible signal data for the Higgs boson, such as the reported best fit values of σ/σ_{SM} from each experimental collaboration, the first task should be to clarify if a resonance is consistent with a SM Higgs interpretation or not. From an effective field theory perspective, there is no particular motivation for the couplings of the Higgs to be identical to one predicted by the SM. The hierarchy problem strongly suggests the existence of new states with a relatively low mass, coupled to the Higgs. Integrating out these states, one expects the properties of the Higgs will change. Nevertheless, when approaching the data in effective field theory, the symmetries that are known to be at least approximately present at the weak scale are already highly constraining, as discussed in section 2. One is therefore lead to the effective description of the data which we have adopted,⁷ and global fits to precision Higgs data will allow the SM hypothesis of EWSB to be experimentally tested in the near future.

⁷The robustness of the requirement of exact MFV is less significant than $SU(2)_c$ in the EWSB sector.

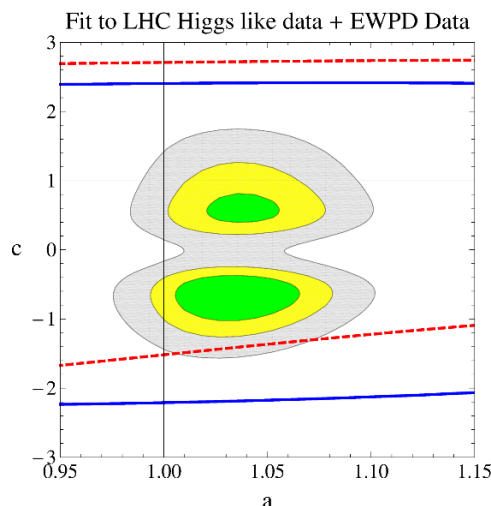


Figure 4. Global fit results in the (a, c) plane for all best fit σ/σ_{SM} values given by ATLAS and CMS combined with EWPD. The plot follows the same convention as the previous plots. The $\chi^2/\text{d.o.f} = 1.3$. As before the blue (red) curve is the exclusion region from CMS (ATLAS). Again the shown exclusion curves are determined from inclusive production.

As the LHC will be running at 8 TeV, the contours of constant $\mu^i = [\sigma \times \text{BR}](h \rightarrow XX)[a, c]/[\sigma \times \text{BR}]_{SM}(h \rightarrow XX)$ in a final state X are constructed in the (a, c) plane for this centre of mass (c.m.) energy in figure 5. We restrict ourselves to a subset of the channels used in this analysis. The prospects of reducing the degeneracy in the best fit regions relies mostly on further observations related to signal events in $\sigma \times \text{BR}(h \rightarrow \gamma\gamma)$. Here we have rescaled using the previously defined ‘inclusive’ rescaling and combined the production channels that contribute to the analyses of signal channels. Note that each individual channel has a mapping away from the SM point of $(1, 1)$ in the (a, c) plane to a family of degenerate points. This leads to two best fit areas, which have to be resolved. This can be done by realizing that the mapping is not the same when comparing among different channels.

Experimental results can be presented in such a manner as to aid in this pursuit. When best fit signal strengths are presented for a common Higgs mass scale, correlation coefficients should be supplied as well, which will lead to more accurate fits. The effective theory approach makes clear that it is instructive to experimentally provide ratios of various best fit signal strengths, so that the parameters (a, c) can be more precisely determined. In particular, it would be helpful if the experimental collaborations provide results that allow the degeneracy in the two fit minima to be resolved. Ratios of effective signal strengths can help in resolving this degeneracy. In figure 6 we show the effective production contour ratios for two combinations of extracted best fit signal strengths in the (a, c) plane,

$$\frac{\mu^{\gamma\gamma}}{\mu^{ZZ}} = \frac{(\sigma \times \text{BR})^{h\gamma\gamma}[a, c]}{(\sigma \times \text{BR})^{hZZ}[a, c]} \frac{(\sigma \times \text{BR})_{SM}^{hZZ}}{(\sigma \times \text{BR})_{SM}^{h\gamma\gamma}}, \quad (5.1)$$

$$\frac{\mu^{\gamma\gamma}}{\mu^{\gamma\gamma}} = \frac{(\sigma \times \text{BR})_{\text{VBF}}^{h\gamma\gamma}[a, c]}{(\sigma \times \text{BR})^{h\gamma\gamma}[a, c]} \frac{(\sigma \times \text{BR})_{SM}^{h\gamma\gamma}}{(\sigma \times \text{BR})_{\text{VBF}, SM}^{h\gamma\gamma}}. \quad (5.2)$$

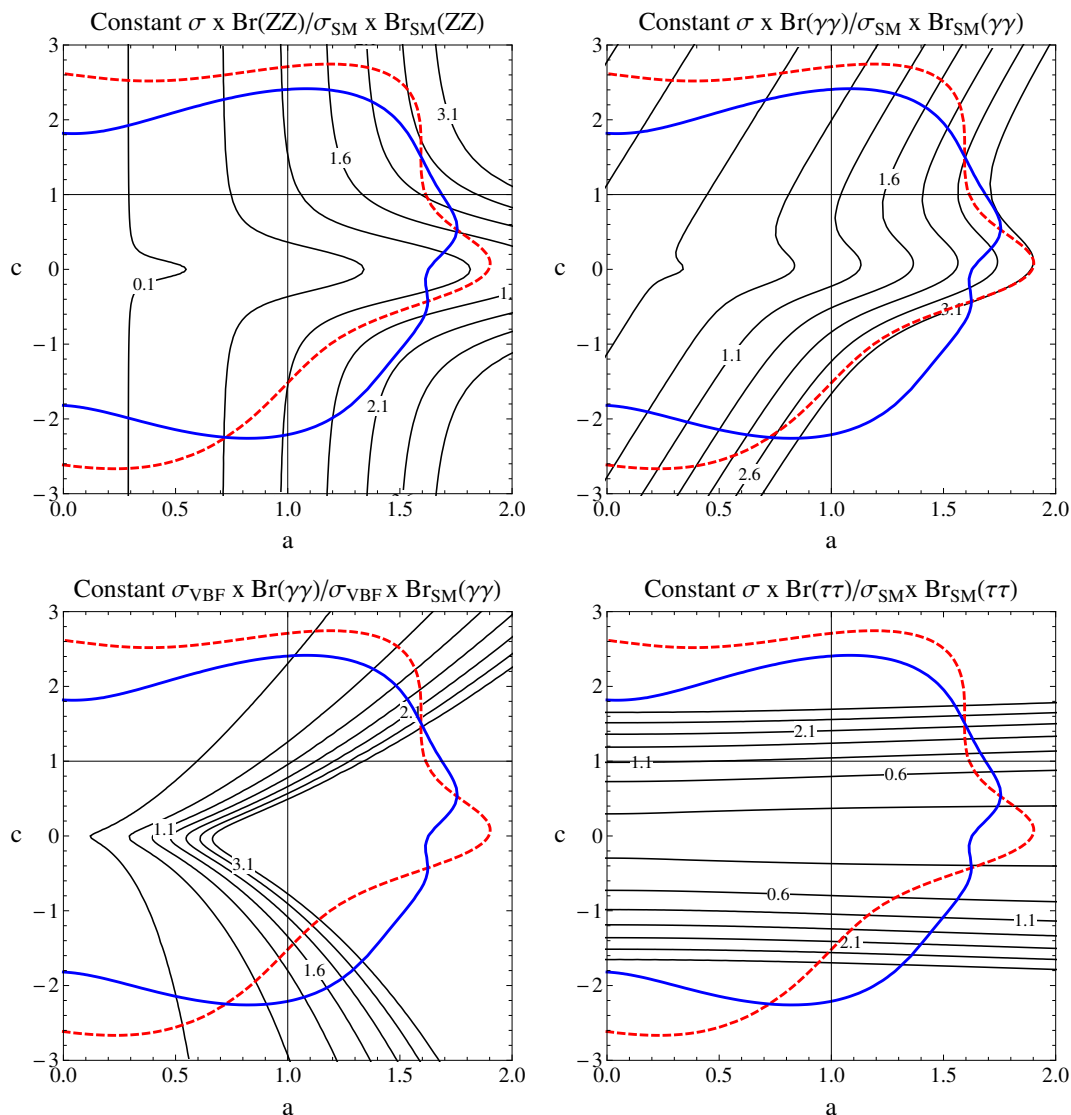


Figure 5. Contours of constant signal production in the (a, c) plane. We have also included the exclusion curves which we have derived from ATLAS and CMS data.

Here we have included superscripts for the various production channels to make explicit the ratios to be constructed. For example σ^{hZZ} means the combination of the production channels discussed in section 3.1 that are included in ZZ signal events. These ratios are obviously 1 in the SM. It is important to note that comparing theoretical and experimental determinations of such ratios, which include sets of best fit signal strengths simultaneously, will allow the degeneracy of the best fit regions to be significantly reduced. Such combinations can also be experimentally appealing when they allow systematic uncertainties to be cancelled, such as photon systematic uncertainties in $\mu_{\text{VBF}}^{\gamma\gamma}/\mu^{\gamma\gamma}$.

6 Conclusions

We have examined the current LHC data in an effective theory to determine to what degree the SM Higgs hypothesis is emerging from the data. To this end we have performed global

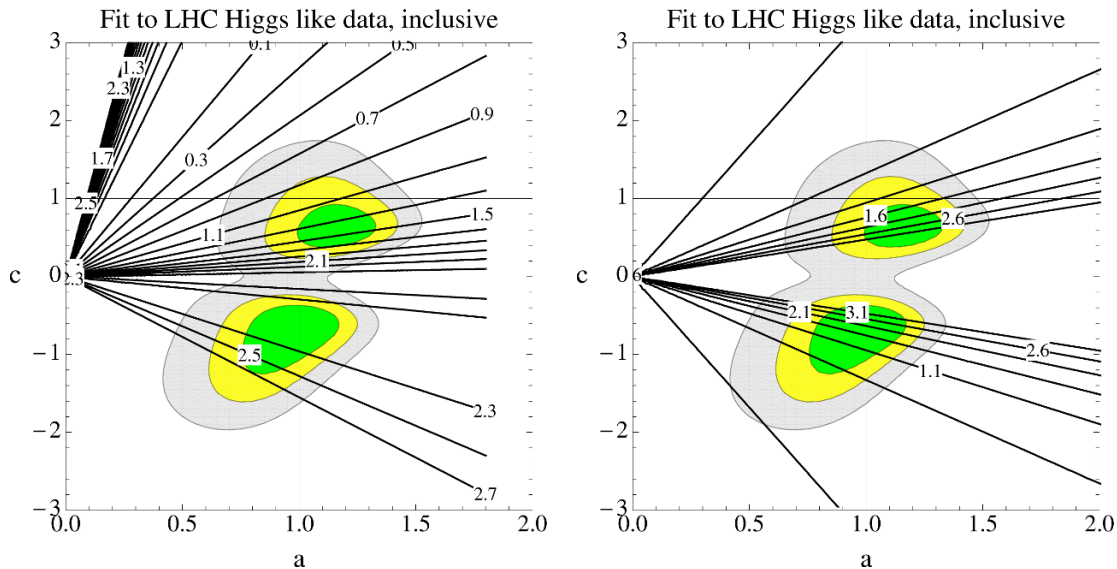


Figure 6. Contours of constant ratios of signal production in the (a, c) plane overlapped on the best fit region. On the left, the ratio $\mu^{\gamma\gamma}/\mu^{ZZ}$ is superimposed for 8 TeV c.m. energy on the best fit regions, on the right, the ratio $\mu^{\gamma\gamma}_{\text{VBF}}/\mu^{\gamma\gamma}$ is superimposed. These observable ratios can resolve the degeneracy of the best fit regions.

fits of best fit signal strengths and exclusion regions, taking into account current data. The SM Higgs hypothesis turns out to be consistent with the data at the 82% CL. In our global fits we find that there are two best fit regions. We have determined experimentally accessible ratios of best fit signal strengths for a specific Higgs mass value that will allow the degeneracy in the best fit regions to be significantly reduced with sufficient data collected at 8 TeV c.m. energy.

A Fitting assumptions

In order to perform the fit we have made several assumptions, some of which can clearly be relaxed with more input from experimental collaborations. In this appendix we discuss these assumptions in more detail.

- (i) We have assumed that the excess events reported in table 1, which have various best fit mass values, correspond to the same underlying physics, which we are assuming can be characterized by the Lagrangian in eq. (2.2). We have argued that symmetry considerations lead us to consider this Lagrangian but the degree to which the reported best fit values of μ^i can be associated with a particular mass scale is less clear. The mass resolution in all the various channels is larger than the spread of the Higgs masses listed in table 1, which differ at most by 2.5 GeV. However, reported best fit values of μ^i depend on the assumed m_h value. Considering the marginal statistical significance of the various channels, background fluctuations convoluted with signal events can be expected to shift the best fit value of the mass. Characterizing precisely the effect of such fluctuations is challenging. It is reasonable, however, to

consider such effects to support our association of the excess with a common mass scale, which we choose to be 124 GeV.

- (ii) We have assumed that the given best fit values of μ^i in the various channels are uncorrelated to one another, neglecting both theory and experimental correlations. This is due to the lack of correlations reported by the experimental collaborations. This assumption is most easy to address with further experimental input. Our fitting procedure can be easily modified to include such correlation coefficients as off-diagonal elements in the covariance matrix. The signals naively expected to be most strongly correlated are the $\gamma\gamma$ events. We have studied the effects of correlations on the fit by introducing pseudo-correlations through a correlation coefficient of size 0.5 between all $\gamma\gamma$ data. The fit results are robust against such pseudo-correlations and we still find two best fit regions with a similar parameter space as without correlations taken into account. We have also examined the robustness of the fit results against a set of other pseudo-correlations randomly chosen and assigned as off-diagonal elements in the covariance matrix. Again we find robust fit results when globally fitting the data.
- (iii) We have assumed that the effect of rescaling the cross section and the branching ratios can be directly associated with a rescaling of μ^i , neglecting the effect that rescaling the various channels modifies the differential distributions. This assumption can fail in the presence of higher dimensional operators. The modification of the differential distributions will affect μ^i due to experimental selection cuts modifying the shape of the differential distributions. However, we consider this effect to be subdominant to the effect we have incorporated by fitting to an unfixed (a, c) with production cross sections and branching ratios modified accordingly. Furthermore, we rescaled the various branching ratios according to the couplings included in the leading order formulae of the decay widths. This procedure is consistent when including only QCD corrections to the decay widths, however when including higher order EW corrections further effects due to a, c differing from 1 are neglected. Again, this effect is subdominant to the effects that we have retained.
- (iv) We have also neglected, in using μ^i , that this result is determined assuming the SM in the combination of sub-channels, leading to the reported μ^i ratio. We also expect this effect to be subdominant to the effects that we have retained. This is in particular the case if the sub-channel combination is dominated by a particular final state. The analyses that use sub-channel combinations are the WW , ZZ , $\tau\tau$ channels. We have tested the robustness of the fit by fitting with two procedures shown in figure 1. In the figure labeled ‘ gg only’, we have only included the dominant production cross section leading to the various final states (usually $\sigma_{gg \rightarrow h}$ production). We also have performed a fit where all production processes are included. The latter results are labeled as ‘inclusive’ in figure 1. We again find that the fit is robust against such differences.
- (v) We have neglected the effects of higher dimensional operators in the fit. This assumption can be justified in composite Higgs models, where the shift symmetry of

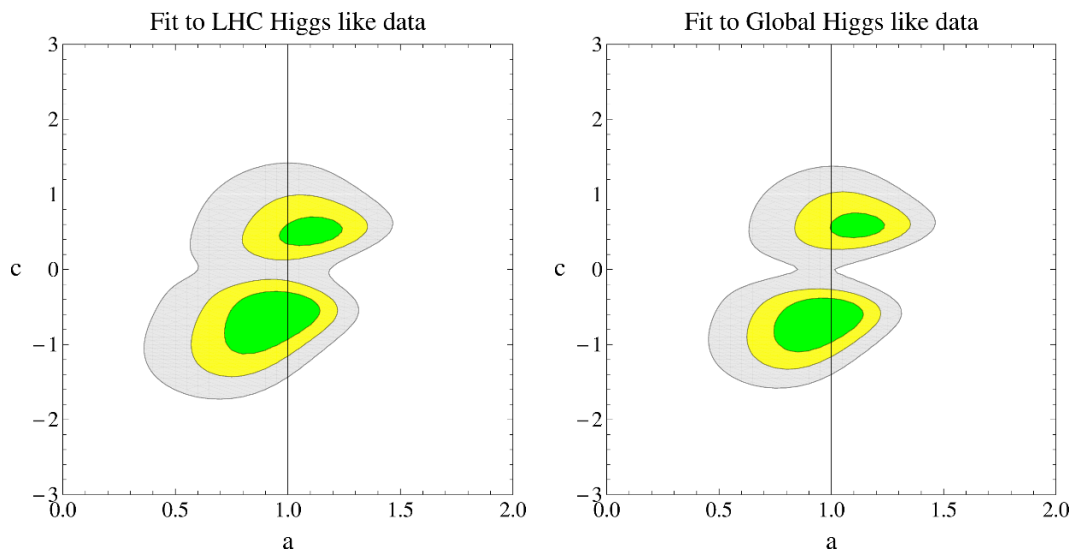


Figure 7. Update to the global fit. To the left we have only updated the WW ATLAS signal in table 1 to the value in table 2. On the right we have also added the ATLAS $\tau\tau$ and Tevatron data on $p\bar{p} \rightarrow b\bar{b}$ and $p\bar{p} \rightarrow W^+W^-$ as shown in table 2.

the pseudo-Goldstone Higgs suppresses such operators, and the coefficients we have retained are more sensitive to the underlying strong dynamics.

- (vi) The SM inputs used in the fit are $m_h = 124 \text{ GeV}$, $m_W = 80.398 \text{ GeV}$, $m_Z = 91.1876 \text{ GeV}$, $m_t = 172.5 \text{ GeV}$ and $\sin^2(\theta_W) = 0.223$.

It is clearly of interest to further examine the effect of these assumptions, relaxing them whenever possible theoretically and to perform more refined analyses of this form when further experimental input is available.

B Moriond 2012 update

In this section we present updated results including the data presented at Moriond 2012 [43]. The most significant change in the data that was used in table 1 is an update to the ATLAS measurement of $pp \rightarrow WW^* \rightarrow \ell^+ \nu \ell^- \bar{\nu}$. In addition, ATLAS reported best fit signal strengths in the $pp \rightarrow b\bar{b}$ and $pp \rightarrow \tau\bar{\tau}$ channels while CDF and DØ reported a broad excess in $p\bar{p} \rightarrow b\bar{b}$ events. Further, CMS has now also supplied best fit signal strengths as a function of m_h , allowing various Higgs mass hypotheses to be fit to. In this appendix we include these experimental results in our fit and supply supplementary plots for various Higgs masses (refining also our determination of the 95% C.L. exclusion limits).

The updated data that we supplement table 1 with is given in table 2. Due to an apparent inconsistency in the ATLAS best fit signal strength plot for $pp \rightarrow b\bar{b}$ and the corresponding ATLAS CL_s limit plot we do not use the $b\bar{b}$ best fit signal strength value in the combined fit. We show in figure 7 the effect of the Moriond 2012 data on our previously reported fit results.

Channel [Exp]	m_h [GeV]	μ (μ_L)
$pp \rightarrow W W^* \rightarrow \ell^+ \nu \ell^- \bar{\nu}$ [ATLAS]	126	$0.2^{+0.6}_{-0.7}$ (1.3)
$pp \rightarrow b \bar{b}$ [ATLAS]	124	$-0.8^{+1.7}_{-1.7}$ (3.5)
$pp \rightarrow \tau \bar{\tau}$ [ATLAS]	124	$-0.1^{+1.7}_{-1.7}$ (3.4)
$p\bar{p} \rightarrow b \bar{b}$ [CDF&DØ]	125	$2.0^{+0.8}_{-0.7}$ (3.2)
$p\bar{p} \rightarrow W^+ W^-$ [CDF&DØ]	125	$0.03^{+1.22}_{-0.03}$ (2.4)

Table 2. Summary table of reported signatures with events related to the Higgs mass scale of interest ($m_h \simeq 124$ GeV) where excess events have been reported. Moriond 2012 update with new numbers to supplement (or replace) entries in table 1.

Channel [Exp]	$\hat{\mu}_{119.5}$ ($\mu_{119.5}^L$)	$\hat{\mu}_{124}$ (μ_{124}^L)	$\hat{\mu}_{125}$ (μ_{125}^L)
$pp \rightarrow \gamma \gamma$ [ATLAS]	$0.0^{+0.6}_{-0.8}$ (1.5)	$0.8^{+0.8}_{-0.7}$ (2.6)	$1.6^{+0.9}_{-0.8}$ (3.9)
$pp \rightarrow Z Z^* \rightarrow \ell^+ \ell^- \ell^+ \ell^-$ [ATLAS]	-0.5^{+1} (5.1)	$1.6^{+1.4}_{-0.8}$ (4.7)	$1.4^{+1.3}_{-0.8}$ (4.1)
$pp \rightarrow W W^* \rightarrow \ell^+ \nu \ell^- \bar{\nu}$ [ATLAS]	$0.0^{+1.2}_{-1.3}$ (2.4)	$0.1^{+0.7}_{-0.7}$ (1.6)	$0.1^{+0.7}_{-0.6}$ (1.4)
$pp \rightarrow \gamma \gamma$ [CMS]	$-1.1^{+0.6}_{-0.6}$ (1.3)	$1.5^{+0.7}_{-0.7}$ (3.5)	$1.6^{+0.7}_{-0.6}$ (3.0)
$pp \rightarrow Z Z^* \rightarrow \ell^+ \ell^- \ell^+ \ell^-$ [CMS]	$2.0^{+1.6}_{-1.1}$ (5.2)	$0.5^{+1.1}_{-0.7}$ (2.7)	$0.6^{+0.9}_{-0.6}$ (2.5)
$pp \rightarrow W W^* \rightarrow \ell^+ \nu \ell^- \bar{\nu}$ [CMS]	$0.9^{+0.8}_{-0.7}$ (2.5)	$0.6^{+0.7}_{-0.7}$ (1.8)	$0.4^{+0.6}_{-0.6}$ (1.5)
$pp \rightarrow b \bar{b}$ [CMS]	$0.4^{+1.8}_{-1.6}$ (4.1)	$1.2^{+1.9}_{-1.8}$ (5.0)	$1.2^{+2.1}_{-1.7}$ (5.2)
$pp \rightarrow \tau \bar{\tau}$ [CMS]	$0.2^{+0.9}_{-1.1}$ (3.6)	$0.4^{+1.0}_{-1.2}$ (3.9)	$0.6^{+1.1}_{-1.2}$ (4.1)
$pp \rightarrow \tau \bar{\tau}$ [ATLAS]	$-0.9^{+1.7}_{-1.7}$ (2.9)	$-0.1^{+1.7}_{-1.7}$ (3.4)	$0.1^{+1.7}_{-1.8}$ (3.5)
$p\bar{p} \rightarrow b \bar{b}$ [CDF&DØ]	$1.5^{+0.6}_{-0.5}$ (2.5)	$1.9^{+0.8}_{-0.6}$ (3.1)	$2.0^{+0.8}_{-0.7}$ (3.2)
$p\bar{p} \rightarrow W^+ W^-$ [CDF&DØ]	$1.63^{+1.46}_{-1.12}$ (4.5)	$0.03^{+1.22}_{-0.03}$ (2.4)	$0.03^{+1.22}_{-0.03}$ (2.4)

Table 3. Summary table of reported best fit signal strengths for various Higgs mass values. We note that the asymmetric nature of the error band for the best fit signal strength values reported for the $pp \rightarrow Z Z^* \rightarrow \ell^+ \ell^- \ell^+ \ell^-$ signal by ATLAS is curious. We use this data in the fit. For $m_h = 125$ GeV we use the public results presented at Moriond 2012 that splits the $\gamma \gamma$ signal events into four classes (that are not identical to the classes used in the body of the paper) as well as the (dominantly) VBF induced photon events instead of the global photon value in the table. The non VBF di-photon events we rescale inclusively. The data used for the category zero to four photons is given (in order) for μ_{125} by $2.1^{+2.0}_{-1.6}$, $0.6^{+1.0}_{-0.3}$, $2.2^{+1.4}_{-1.4}$, $0.5^{+1.8}_{-1.7}$, while the VBF induced photon result is $3.6^{+2.2}_{-1.6}$.

We also show joint fits for the Higgs mass values $m_h = 119.5, 124, 125$ GeV where we have taken the experimentally reported $\hat{\mu}$ and the corresponding theory predictions at a common m_h due to the release of the required data by CMS, after version one of this

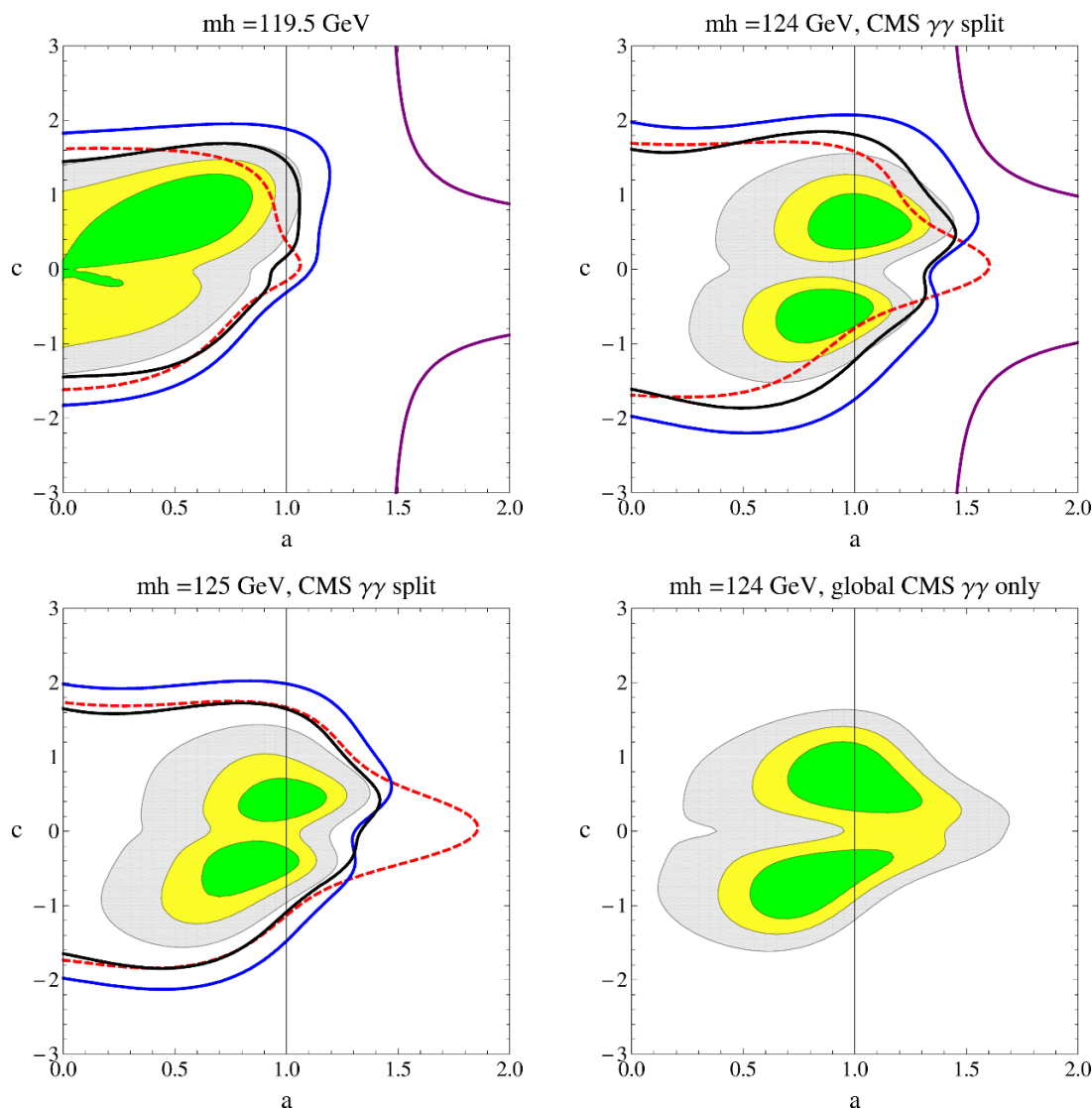


Figure 8. Fitting various mass hypothesis using the data from table 3 and its caption. The red dashed line is the ATLAS exclusion limit as described in the text, the blue solid line is the CMS limit and the combined CMS and ATLAS limit is included as a black solid line.

paper. The data we use is given in table 3 for each particular Higgs mass value chosen. These results are shown for various masses in figure 8. Examining the results, one clearly sees that the excess at 119.5 GeV can be distinguished globally to be a likely statistical fluctuation compared to the global fit to the excess of events around $\sim 124 - 126$ GeV. For the three mass values, the best fit points (m_h, a, c, χ^2) are $(119.5, 0.28, 0.49, 9.8)$, $(124, 0.87, -0.43, 4.1)$ and $(125, 0.87, -0.42, 4.6)$, where for the latter two masses we use the CMS di-photon data resolved into subclasses. Fitting to $m_h = 124$ GeV with global di-photon data only, compared to di-photon data split into subclasses, shows that the discrimination on the parameter space offered by separately reporting the VBF induced $\gamma\gamma jj$ signal is important. We also encourage the experimental collaborations to report the

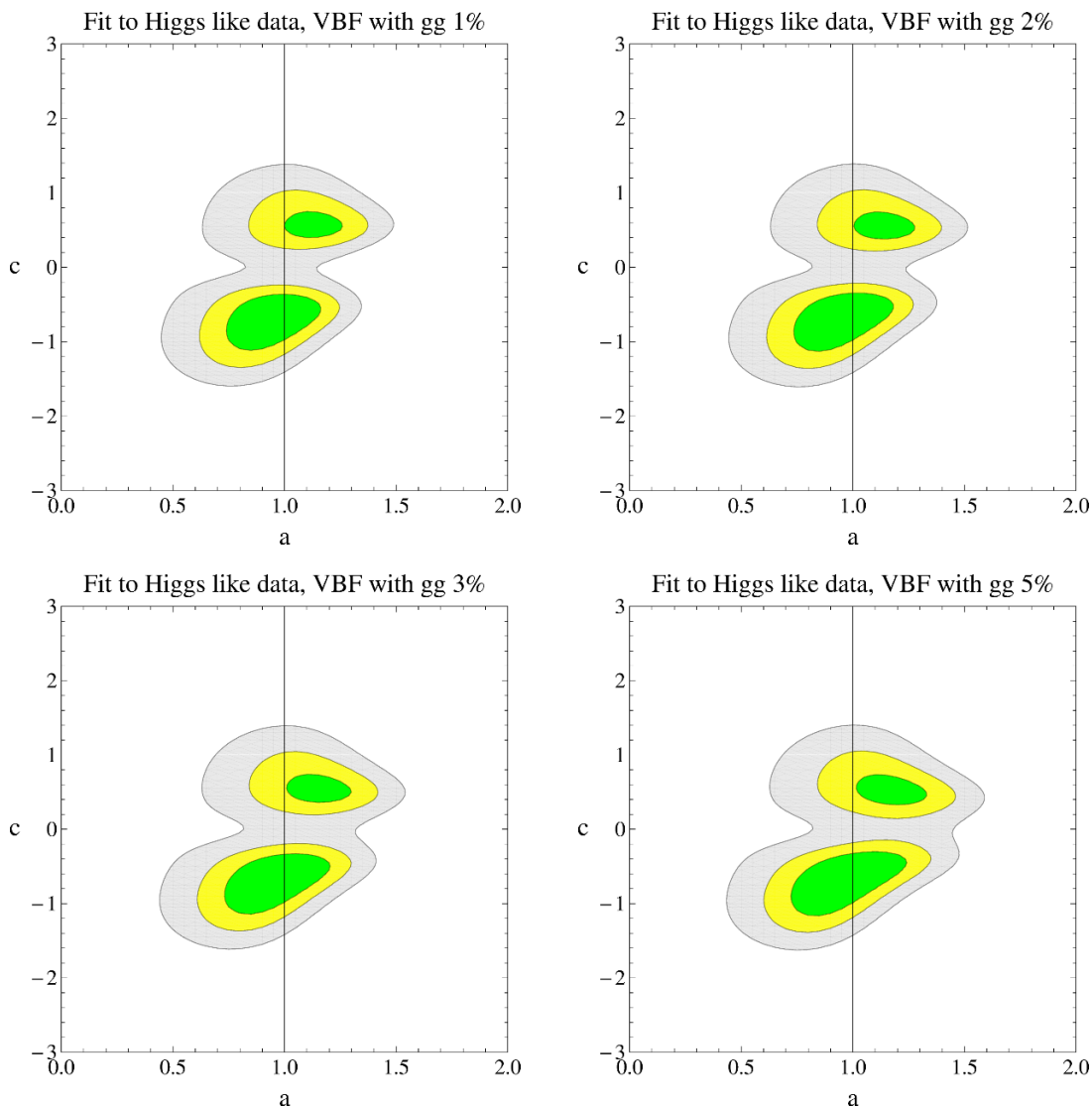


Figure 9. Various degrees of contamination of the VBF signal with $gg \rightarrow h$ events.

degree of contamination of this signal with gg initial state Higgs events to enable a consistent treatment of the reported best fit signal strengths. One can demonstrate how the VBF signal interpolates between the two results shown in figure 8 by adding in contamination due to $\sigma(gg \rightarrow h)$ events with our consistent rescaling procedure. One finds the series of plots shown in figure 9 for various degrees of contamination. Note that CMS also reports $W^+ W^- jj$ events which offer a similar discrimination of the parameter space as the $\gamma\gamma jj$ signal in principle. However, again contamination due to $\sigma(gg \rightarrow h)$ events will exist and is not reported by the collaborations. We do not use this data as a separate channel at present. The update to the data has a small effect on the CL of the SM Higgs hypothesis compared to the best fit value of the current data. Assuming no contamination due to gg for VBF events one finds that our previously reported global fit with the Moriond 2012 data update (but without correcting to a single Higgs mass value in the experimental best

fit signal strengths) has the SM hypothesis residing on a 94% CL curve around the best fit value of (a, c) . Assuming a 3% contamination of the VBF events due to gg, the SM hypothesis remains consistent with the data at 93% CL compared to the best fit value. For a direct comparison, the Fermiophobic scenario with $a = 1, c = 0$ is consistent with the data at 96% CL for the same global fit. When a 3% contamination due to gg events for the VBF diphoton signal of CMS is assumed, the same Fermiophobic scenario is consistent with the data at the 88% CL.

Finally, the 95% CL exclusion curves from ATLAS and CMS in the plots of this appendix have been determined using a more precise method than eq. (3.5). In the same spirit of ref. [42], for each individual search channel i , we have first approximated the corresponding probability density function of the signal strength parameter μ by a Gaussian $p_i(\mu) \propto \text{Exp}[-(\mu - \bar{\mu}^i)^2 / (2\sigma_{\text{obs},i}^2)]$. We have obtained the quantities $\bar{\mu}^i$ and $\sigma_{\text{obs},i}$ trying to get the best approximation to the reported 95% CL in that channel, μ_L^i (obtained from the equation $\int_0^{\mu_L^i} p_i(\mu) d\mu = 0.95$). In the case of CMS channels, we use the approximation of ref. [42] (which uses $\sigma_{\text{obs},i} \simeq \sigma_{\text{exp},i} = \mu_{L,\text{exp}}^i / 1.96$ and obtains $\bar{\mu}$ by solving the equation that determines μ_L^i). In the case of ATLAS data, we find better agreement with the reported limits by directly using $\bar{\mu}^i = \hat{\mu}^i$ and $\sigma_{\text{obs},i}$ as provided.⁸ To illustrate the precision of our approximations to the exclusion limits we compare them with the official 95% CL limit on σ/σ_{SM} in figure 10. In the left (right) panel we show the CMS (ATLAS) limit, with the official curve in black. The red curve is the simple approximation of eq. (3.5) and the green curves are more precise determinations of the limit as explained above. The dashed green line corresponds to an approximate determination of $\hat{\mu}^i$ and $\sigma_{\text{obs},i}$ as in ref. [42]. The solid green line (only shown for ATLAS) uses $\bar{\mu}^i = \hat{\mu}^i$ and $\sigma_{\text{obs},i}$ as provided.

Acknowledgments

As the draft of this work was being finalized two analyses with overlap to some of the work presented here appeared [41, 42]. We thank Ricardo Gonalo, Aurelio Juste, Michael Spira, Wade Fisher, Joey Huston, Vivek Sharma and Josh Bendavid for helpful communication on related theory and data. This work has been partly supported by the European Commission under the contract ERC advanced grant 226371 MassTeV, the contract PITN-GA-2009-237920 UNILHC, and the contract MRTN-CT-2006-035863 ForcesUniverse, as well as by the Spanish Consolider Ingenio 2010 Programme CPAN (CSD2007-00042) and the Spanish Ministry MICNN under contract FPA2010-17747 and FPA2008-01430. MM is supported by the DFG SFB/TR9 Computational Particle Physics.

Open Access. This article is distributed under the terms of the Creative Commons Attribution License which permits any use, distribution and reproduction in any medium, provided the original author(s) and source are credited.

⁸This is not the case of the $b\bar{b}$ channel, where we find a discrepancy between the limit derived from $\hat{\mu}^i$ and $\sigma_{\text{obs},i}$ and the reported limit. We therefore do not use this channel to extract the combined limit in the (a, c) plane. Although this is a subdominant channel, the impact of such discrepancy on the SM exclusion around 115 – 120 GeV is not negligible. In the case of the $Z \rightarrow 4l$ channel, for some ranges of Higgs masses the reported (negative) value of $\hat{\mu}$ is hitting a boundary and we could not use it to reproduce well the experimental limit. In these cases we use the same approximation as for the CMS channels.

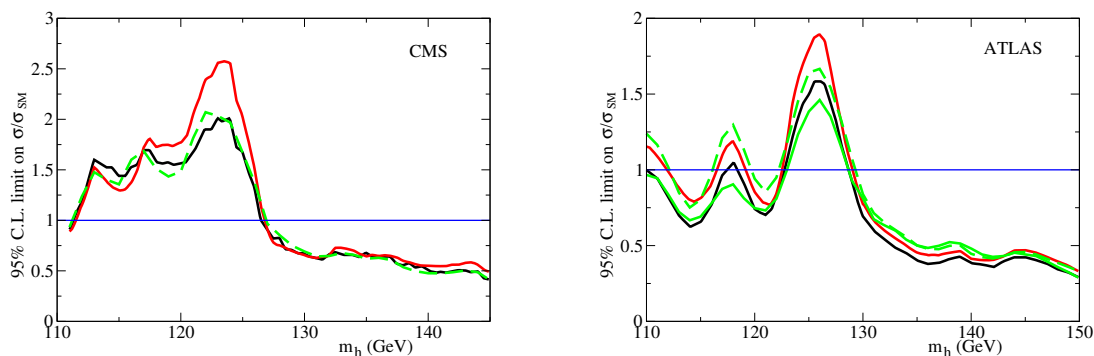


Figure 10. 95% C.L. limits on σ/σ_{SM} for CMS (left) and ATLAS (right). The official curve is the black solid line. The red curve is obtained from the simple approximation of eq. (3.5). The green curves are more precise determinations of the limit as explained in the text.

References

- [1] L. Susskind, *Dynamics of spontaneous symmetry breaking in the Weinberg-Salam theory*, *Phys. Rev. D* **20** (1979) 2619 [INSPIRE].
- [2] S. Weinberg, *Implications of dynamical symmetry breaking: an addendum*, *Phys. Rev. D* **19** (1979) 1277 [INSPIRE].
- [3] P. Sikivie, L. Susskind, M.B. Voloshin and V.I. Zakharov, *Isospin breaking in technicolor models*, *Nucl. Phys. B* **173** (1980) 189 [INSPIRE].
- [4] R.S. Chivukula and H. Georgi, *Composite technicolor standard model*, *Phys. Lett. B* **188** (1987) 99 [INSPIRE].
- [5] L. Hall and L. Randall, *Weak scale effective supersymmetry*, *Phys. Rev. Lett.* **65** (1990) 2939 [INSPIRE].
- [6] G. D’Ambrosio, G. Giudice, G. Isidori and A. Strumia, *Minimal flavor violation: an effective field theory approach*, *Nucl. Phys. B* **645** (2002) 155 [hep-ph/0207036] [INSPIRE].
- [7] A.J. Buras, *Minimal flavor violation*, *Acta Phys. Polon. B* **34** (2003) 5615 [hep-ph/0310208] [INSPIRE].
- [8] V. Cirigliano, B. Grinstein, G. Isidori and M.B. Wise, *Minimal flavor violation in the lepton sector*, *Nucl. Phys. B* **728** (2005) 121 [hep-ph/0507001] [INSPIRE].
- [9] ATLAS collaboration, G. Aad et al., *Combined search for the standard model Higgs boson using up to 4.9 fb^{-1} of pp collision data at $\sqrt{s} = 7\text{ TeV}$ with the ATLAS detector at the LHC*, *Phys. Lett. B* **710** (2012) 49 [arXiv:1202.1408] [INSPIRE].
- [10] CMS collaboration, S. Chatrchyan et al., *Combined results of searches for the standard model Higgs boson in pp collisions at $\sqrt{s} = 7\text{ TeV}$* , arXiv:1202.1488 [INSPIRE].
- [11] CMS collaboration, S. Chatrchyan et al., *Search for the standard model Higgs boson decaying into two photons in pp collisions at $\sqrt{s} = 7\text{ TeV}$* , arXiv:1202.1487 [INSPIRE].
- [12] G. Giudice, C. Grojean, A. Pomarol and R. Rattazzi, *The strongly-interacting light Higgs*, *JHEP* **06** (2007) 045 [hep-ph/0703164] [INSPIRE].

- [13] R. Contino, C. Grojean, M. Moretti, F. Piccinini and R. Rattazzi, *Strong double Higgs production at the LHC*, *JHEP* **05** (2010) 089 [[arXiv:1002.1011](#)] [[INSPIRE](#)].
- [14] R. Grober and M. Muhlleitner, *Composite Higgs boson pair production at the LHC*, *JHEP* **06** (2011) 020 [[arXiv:1012.1562](#)] [[INSPIRE](#)].
- [15] A.V. Manohar and M.B. Wise, *Modifications to the properties of the Higgs boson*, *Phys. Lett. B* **636** (2006) 107 [[hep-ph/0601212](#)] [[INSPIRE](#)].
- [16] C. Burgess, J. Matias and M. Pospelov, *A Higgs or not a Higgs? What to do if you discover a new scalar particle*, *Int. J. Mod. Phys. A* **17** (2002) 1841 [[hep-ph/9912459](#)] [[INSPIRE](#)].
- [17] V. Barger, H.E. Logan and G. Shaughnessy, *Identifying extended Higgs models at the LHC*, *Phys. Rev. D* **79** (2009) 115018 [[arXiv:0902.0170](#)] [[INSPIRE](#)].
- [18] R. Lafaye, T. Plehn, M. Rauch, D. Zerwas and M. Dührssen, *Measuring the Higgs sector*, *JHEP* **08** (2009) 009 [[arXiv:0904.3866](#)] [[INSPIRE](#)].
- [19] S. Bock et al., *Measuring hidden Higgs and strongly-interacting Higgs scenarios*, *Phys. Lett. B* **694** (2010) 44 [[arXiv:1007.2645](#)] [[INSPIRE](#)].
- [20] B. Grinstein and M. Trott, *A Higgs-Higgs bound state due to new physics at a TeV*, *Phys. Rev. D* **76** (2007) 073002 [[arXiv:0704.1505](#)] [[INSPIRE](#)].
- [21] W.D. Goldberger, B. Grinstein and W. Skiba, *Distinguishing the Higgs boson from the dilaton at the Large Hadron Collider*, *Phys. Rev. Lett.* **100** (2008) 111802 [[arXiv:0708.1463](#)] [[INSPIRE](#)].
- [22] F. Bonnet, M. Gavela, T. Ota and W. Winter, *Anomalous Higgs couplings at the LHC and their theoretical interpretation*, *Phys. Rev. D* **85** (2012) 035016 [[arXiv:1105.5140](#)] [[INSPIRE](#)].
- [23] C. Englert, T. Plehn, M. Rauch, D. Zerwas and P.M. Zerwas, *LHC: standard Higgs and hidden Higgs*, *Phys. Lett. B* **707** (2012) 512 [[arXiv:1112.3007](#)] [[INSPIRE](#)].
- [24] M. Dührssen et al., *Extracting Higgs boson couplings from CERN LHC data*, *Phys. Rev. D* **70** (2004) 113009 [[hep-ph/0406323](#)] [[INSPIRE](#)].
- [25] B.A. Campbell, J. Ellis and K.A. Olive, *Phenomenology and cosmology of an electroweak pseudo-dilaton and electroweak baryons*, *JHEP* **03** (2012) 026 [[arXiv:1111.4495](#)] [[INSPIRE](#)].
- [26] ATLAS collaboration, G. Aad et al., *Search for the Standard Model Higgs boson in the diphoton decay channel with 4.9 fb^{-1} of pp collisions at $\sqrt{s} = 7 \text{ TeV}$ with ATLAS*, *Phys. Rev. Lett.* **108** (2012) 111803 [[arXiv:1202.1414](#)] [[INSPIRE](#)].
- [27] ATLAS collaboration, *Combination of Higgs Boson Searches with up to 4.9 fb^{-1} of pp collisions data taken at a center-of-mass energy of 7 TeV with the ATLAS experiment at the LHC*, *ATLAS-CONF-2011-163* (2011).
- [28] CMS collaboration, *Search for the standard model Higgs boson in the decay channel $H \rightarrow ZZ \rightarrow 4l$ in pp collisions at $\sqrt{s} = 7 \text{ TeV}$* , *PH-EP-2012-025* (2012).
- [29] CMS collaboration, S. Chatrchyan et al., *Search for the standard model Higgs boson decaying to a W pair in the fully leptonic final state in pp collisions at $\sqrt{s} = 7 \text{ TeV}$* , [arXiv:1202.1489](#) [[INSPIRE](#)].
- [30] LHC HIGGS CROSS SECTION WORKING GROUP collaboration, S. Dittmaier et al., *Handbook of LHC Higgs cross sections: 1. Inclusive observables*, [arXiv:1101.0593](#) [[INSPIRE](#)].
- [31] K. Agashe, R. Contino and A. Pomarol, *The minimal composite Higgs model*, *Nucl. Phys. B* **719** (2005) 165 [[hep-ph/0412089](#)] [[INSPIRE](#)].

- [32] R. Contino, L. Da Rold and A. Pomarol, *Light custodians in natural composite Higgs models*, *Phys. Rev. D* **75** (2007) 055014 [[hep-ph/0612048](#)] [[INSPIRE](#)].
- [33] R. Barbieri, B. Bellazzini, V.S. Rychkov and A. Varagnolo, *The Higgs boson from an extended symmetry*, *Phys. Rev. D* **76** (2007) 115008 [[arXiv:0706.0432](#)] [[INSPIRE](#)].
- [34] B. Holdom and J. Terning, *Large corrections to electroweak parameters in technicolor theories*, *Phys. Lett. B* **247** (1990) 88 [[INSPIRE](#)].
- [35] M.E. Peskin and T. Takeuchi, *A new constraint on a strongly interacting Higgs sector*, *Phys. Rev. Lett.* **65** (1990) 964 [[INSPIRE](#)].
- [36] M. Golden and L. Randall, *Radiative corrections to electroweak parameters in technicolor theories*, *Nucl. Phys. B* **361** (1991) 3 [[INSPIRE](#)].
- [37] M.E. Peskin and T. Takeuchi, *Estimation of oblique electroweak corrections*, *Phys. Rev. D* **46** (1992) 381 [[INSPIRE](#)].
- [38] G. Altarelli and R. Barbieri, *Vacuum polarization effects of new physics on electroweak processes*, *Phys. Lett. B* **253** (1991) 161 [[INSPIRE](#)].
- [39] G. Altarelli, R. Barbieri and S. Jadach, *Toward a model independent analysis of electroweak data*, *Nucl. Phys. B* **369** (1992) 3 [*Erratum ibid.* **B 376** (1992) 444] [[INSPIRE](#)].
- [40] M. Baak et al., *Updated status of the global electroweak fit and constraints on new physics*, [arXiv:1107.0975](#) [[INSPIRE](#)].
- [41] D. Carmi, A. Falkowski, E. Kuflik and T. Volansky, *Interpreting LHC Higgs results from natural new physics perspective*, [arXiv:1202.3144](#) [[INSPIRE](#)].
- [42] A. Azatov, R. Contino and J. Galloway, *Model-independent bounds on a light Higgs*, *JHEP* **04** (2012) 127 [[arXiv:1202.3415](#)] [[INSPIRE](#)].
- [43] *Rencontres de Moriond 2012*, <http://moriond.in2p3.fr/>.