

Wilske B, Schierz G, Preac-Muric V, von Busch K, Kuhbeck R, et al. Intrathecal production of specific antibodies against *Borrelia burgdorferi* in patients with lymphocytic meningoradiculitis (Bannwarth's syndrome). *Annals of Neurology* 20: 337-345, 1986

Winward KE, Smith JL, Culbertson WW, Paris-Hamelin A. Ocular Lyme Borreliosis. *American Journal of Ophthalmology* 108: 651-657, 1989

Zalneraitis EL, Gerber MA. Prevalence of clinically significant neurologic disorders attributable to congenital Lyme disease. Presented at IV International Conference on Lyme Borreliosis, Stockholm, 1990

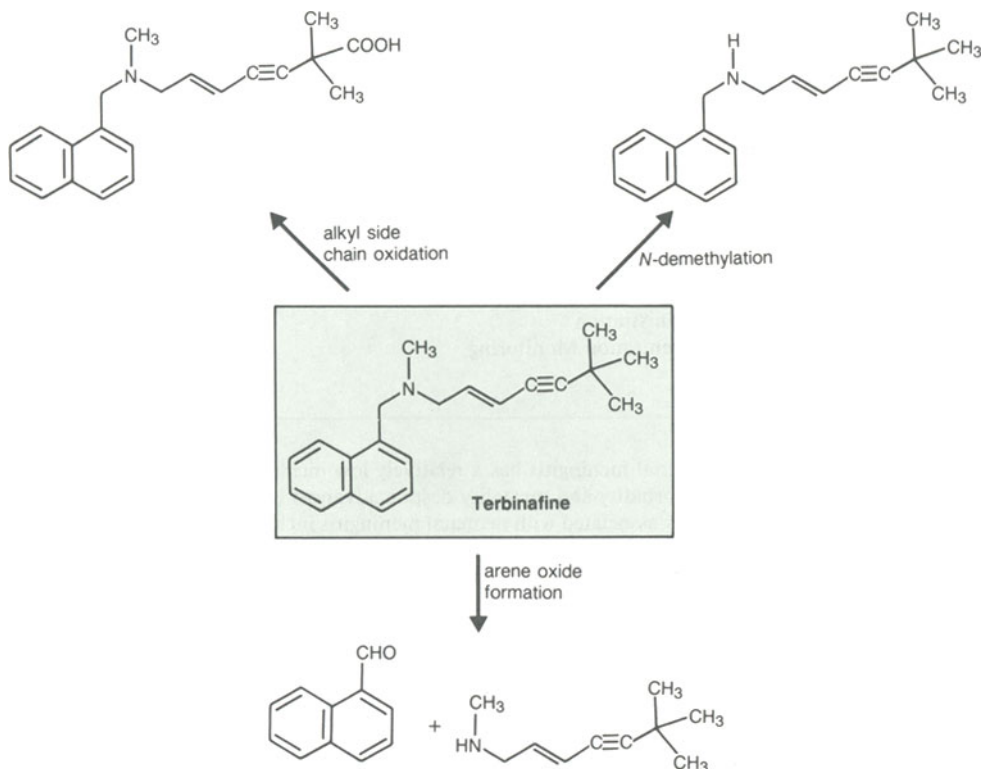
Zoller L, Haude M, Hassler D., Burkhard S, Sontag HG. Spontaneous and post-treatment antibody kinetics in late Lyme borreliosis. *Serodiagnosis and Immunotherapy in Infectious Disease* 3: 345-353, 1989

Correspondence and reprints: Dr Leonard H. Sigal, Director, Lyme Disease Center, University of Medicine and Dentistry of New Jersey, Robert Wood Johnson Place - CN 19, New Brunswick, NJ 08903-0019, USA.

Errata

Vol. 43, No. 2, 1992, page 264: The last sentence in the third paragraph in the left column should read '... against 112 clinical isolates of dermatophyte species...'

Vol. 43, No. 2, 1992, page 273: Figure 4 should be replaced by the following figure:



Vol. 40 (Suppl. 3), 1990: On page 54, lines 9 and 10, inosine pranobex is incorrectly stated as having a flavinoid structure and 'a similar history' to cyanidanol, a compound associated with mortality resulting from haemolytic anaemia. This sentence should be deleted. Inosine pranobex in fact has a *purine structure*, and there are *no recorded fatalities associated with its use*.