

# Fe-Gd (Iron-Gadolinium)

H. Okamoto

The Fe-Gd phase diagram in [Massalski2] was redrawn from [82Kub]. Since then, this system was evaluated by [93Oka1], but the assessed phase diagram did not differ much from that of [82Kub] due to the absence of new experimental data and reasonable thermodynamic modeling.

The Fe-Gd phase diagram shown in Fig. 1 was calculated by [95Liu]. The liquidus composition of this diagram differs as much as ~20 at. % from the diagram of [93Oka1] at the peritectic melting point of Fe<sub>2</sub>Gd. In view of the systematic trends of the Fe-RE systems [93Oka2], the diagram of [95Liu] appears to be more reasonable. [95Liu] included experimental phase boundary data of [69Sav], which were not available to [93Oka1].

## Cited References

- 69Sav:** E.M. Savitsky, V.F. Terekhova, R.S. Torchinova, I.A. Markova, O.P. Naumkin, V.E. Kolesnichenko, and V.F. Stroganova, *Conference on Rare Earth Elements, Proceedings, Paris-Grenoble, Vol. 1*, 49-60 (1969).
- 82Kub:** O. Kubaschewski, *Iron Binary Phase Diagrams*, Springer-Verlag, Berlin, 107 (1982).
- 93Oka1:** H. Okamoto, *Phase Diagrams of Binary Iron Alloys*, H. Okamoto, Ed., ASM International, Materials Park, OH, 152-155 (1993).
- 93Oka2:** H. Okamoto, *Phase Diagrams of Binary Iron Alloys*, H. Okamoto, Ed., ASM International, Materials Park, OH, 341-349 (1993).
- 95Liu:** Z.K. Liu, W. Zhang, and B. Sundman, *J. Alloy. Compd.*, 226, 33-45 (1995).

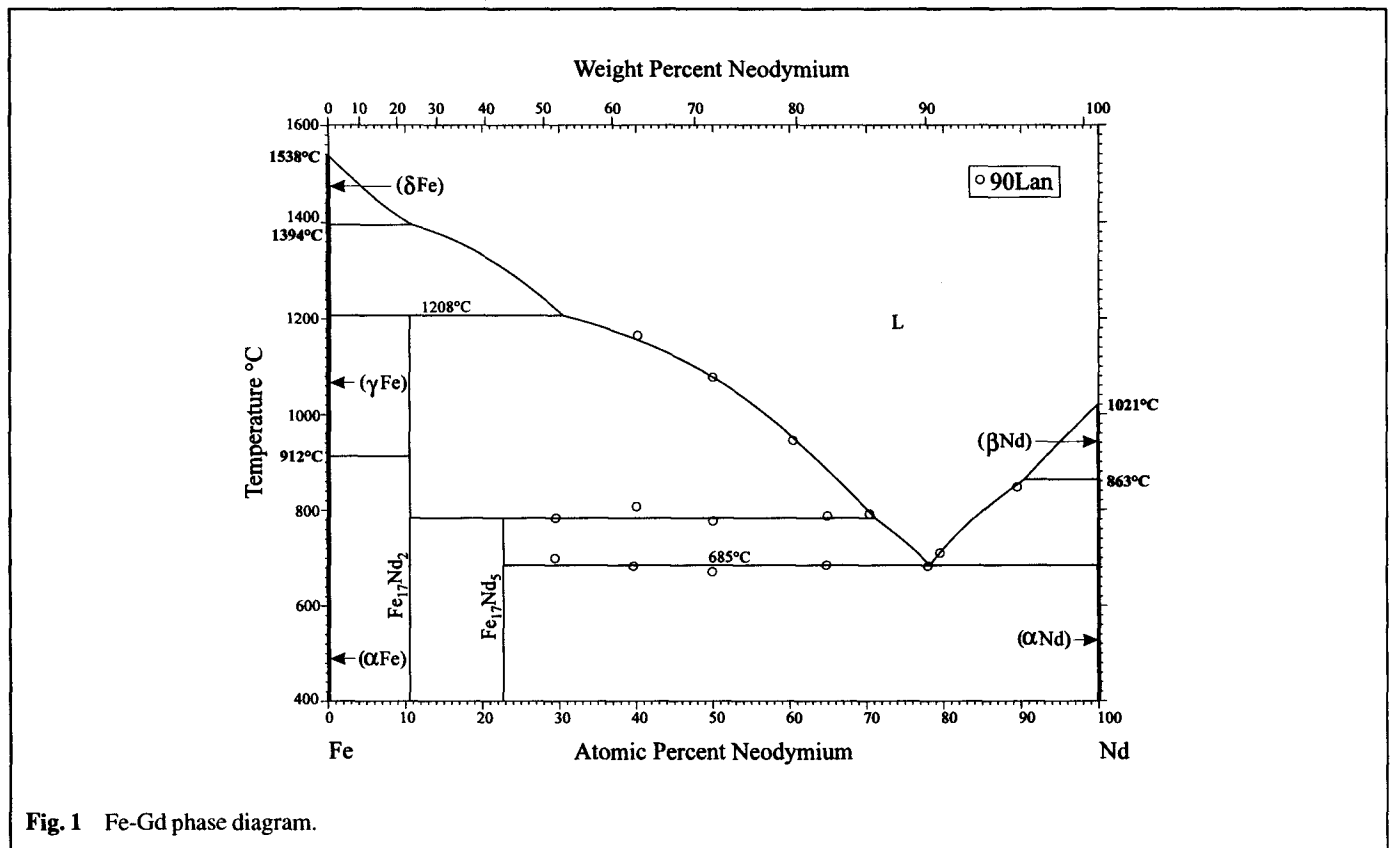


Fig. 1 Fe-Gd phase diagram.