

tise and instrumentation can help enhance environmental testing laboratories productivity in all facets of wastewater and drinking water analysis, including volatiles, semivolatiles, pesticides and the analysis of trace metals;

- application notes relevant to the environmental water analysis industry, including "Analysis of Organophosphate Pesticides by LC-MS," "Analysis of

Mercury in Wastewater by ICP-MS," "Volatiles by Purge-and-Trap GC/MS," and many more applications designed to help meet technical, regulatory and business goals; and

- product literature for Agilent's industry-leading line of GC, GC-MS, LC, LC-MS and ICP-MS instrumentation.

The Water Analysis Information Kit is

available free of charge from any Agilent sales office worldwide.

Please contact:
Sarah Perceval
HCC De Facto Group ple
Tel.: 020 / 7496 3300
Fax: 020 / 7496 3355
E-Mail: s.perceval@hccdefacto.com

Errata

Separation and Determination of Rutin and Quercetin in the Flowers of *Sophora japonica* L. by Capillary Electrophoresis with Electrochemical Detection

by Xiangjun Li / Yuping Zhang / Zhuobin Yuan

published in *Chromatographia* **2002**, 55, February (No. 3/4), pp. 243–246

There was an error in the structure (Figure 1) published on p. 243. Please find below the correct version of the structure.

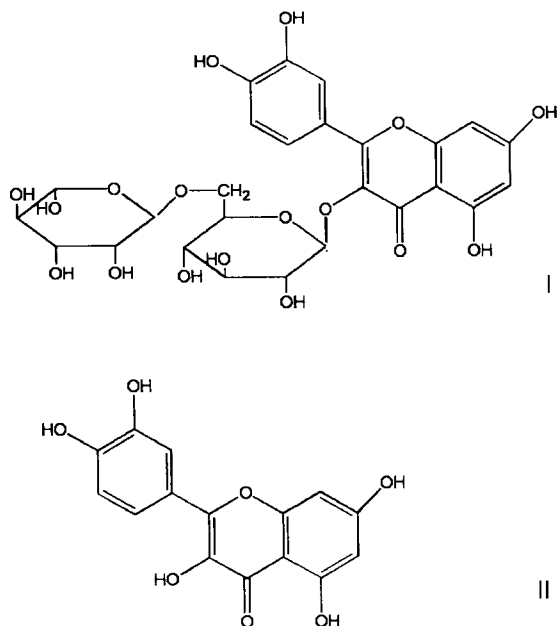


Figure 1. The structures of the analytes: I rutin; II quercetin

The authors