

Erratum

Thermal Conductivity of Superconducting UPt_3 at Low Temperatures.
by M. J. Graf, S.-K. Yip and J. A. Sauls, *J. Low Temp. Phys.* 102, 367-379 (1996)

In the above paper there is an error in Fig. 4, where the thermal conductivity is plotted for an E_{2u} pairing state for various scattering phase shifts δ_0 . For intermediate phase shifts ($\delta_0 = 30^\circ$ and 60°) the curves κ/T showed an exaggerated nonmonotonic behavior at low temperatures, just above the crossover temperature of the universal low temperature region. The correct results show only a weak nonmonotonic behavior or none at all, as illustrated below. All other results and conclusions remain unchanged.

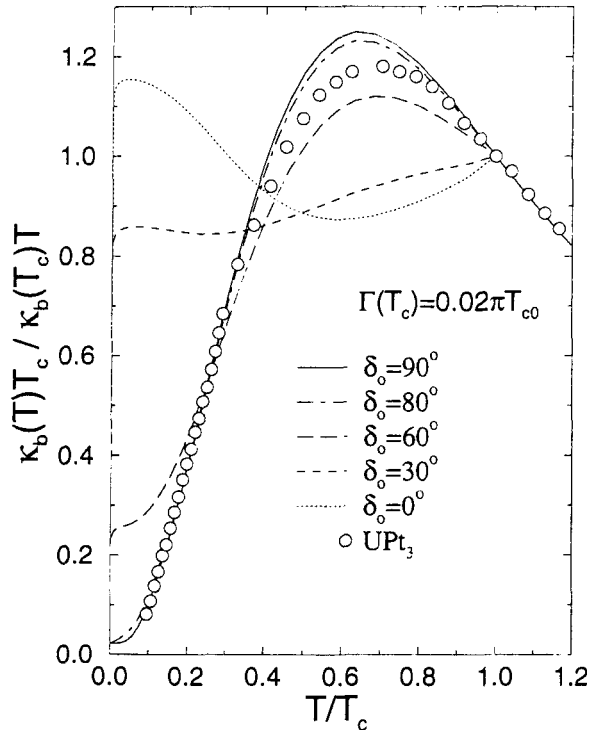


Fig. 4. The normalized thermal conductivity of the E_{2u} -state for heat flow in the basal plane (along the b -axis), a scattering rate $\Gamma(T_c) = 0.02\pi T_{c0}$, and various scattering phase shifts δ_0 . The slope and curvature parameters are $\mu_{II} \approx 2.0$ and $\mu_2 = 4.0$. For weak scattering, $\delta_0 \lesssim 60^\circ$, the crossover region to the universal behavior becomes very small, and barely observable in the figure. The experimental data (circles) are from Lussier *et al.*, *Phys. Rev. B* 53, 5145 (1996).