

---

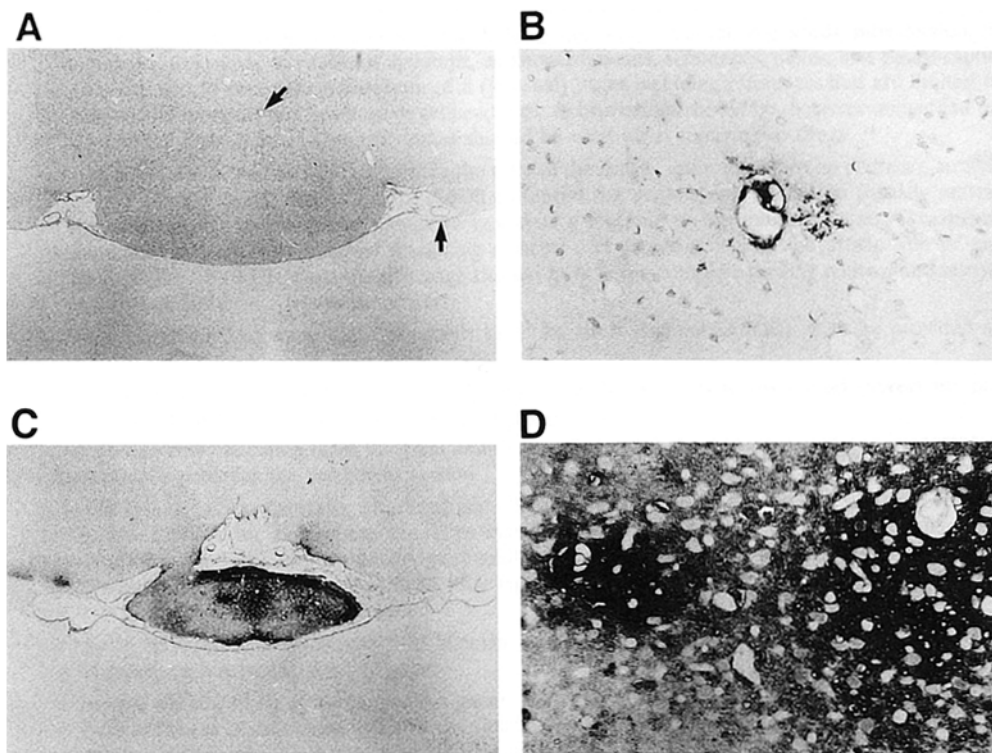
Erratum

---

## The Blood-Brain Barrier and Selective Vulnerability in Experimental Thiamine-Deficiency Encephalopathy in the Mouse

Nobutoshi Harata and Yuzo Iwasaki

On page 64 of the above article, Figure 2 was inadvertently omitted. It appears below with legend.



**Figure 2.** Immunohistochemistry for autologous albumin. *A*: control animal of Group C sacrificed on day 10. The arrows point to negative staining of the vascular lumina. *B*: high-power view of the mamillary nucleus of the mouse in Group PT on day 9. The section was stained for autologous albumin. Note the perivascular confinement of albumin extravasation. *C*: low-power view of the mamillary nucleus of the mouse in Group PT on day 10, when the neurological signs were manifest. The extent of albumin leakage is clearly demonstrated. *D*: high-power view of the same area as in *C*. The extravasated albumin is distributed more diffusely and widely in the affected area than on day 9 (*B*).