

Erratum

*N*⁵-(L-1-Carboxyethyl)-L-Ornithine : NADP⁺ Oxidoreductase in *Streptococcus lactis*: Distribution, Constitutivity, and Regulation

John Thompson, Robert J. Harr, and Jacob A. Donkersloot

Laboratory of Microbial Ecology, National Institute of Dental Research, National Institutes of Health, Bethesda, Maryland, USA

(Curr Microbiol 20:239–244)

Because Figure 4 on page 241 was misprinted, we are reprinting the correct figure with its caption.

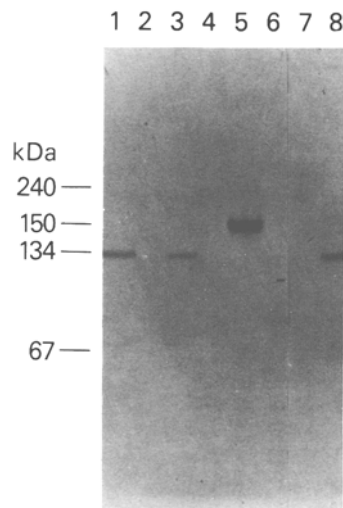


Fig. 4. Assessment of the size of native *N*⁵-(CE)ornithine synthase by gradient gel electrophoresis and immunoblotting. Lane 1, strain C₁₀; lane 2, strain C₂; lane 3, strain ML₈; lane 4, strain 7962; lane 5, strain K1; lane 6, strain ML₃; 7, strain SH4109; lane 8, strain 133. The positions of the standards (catalase, 240 kDa; alcohol dehydrogenase, 150 kDa; bovine serum albumin, 134 (dimer) and 67 (monomer) kDa) are indicated on the left. The samples are described in the legend of Fig. 2.