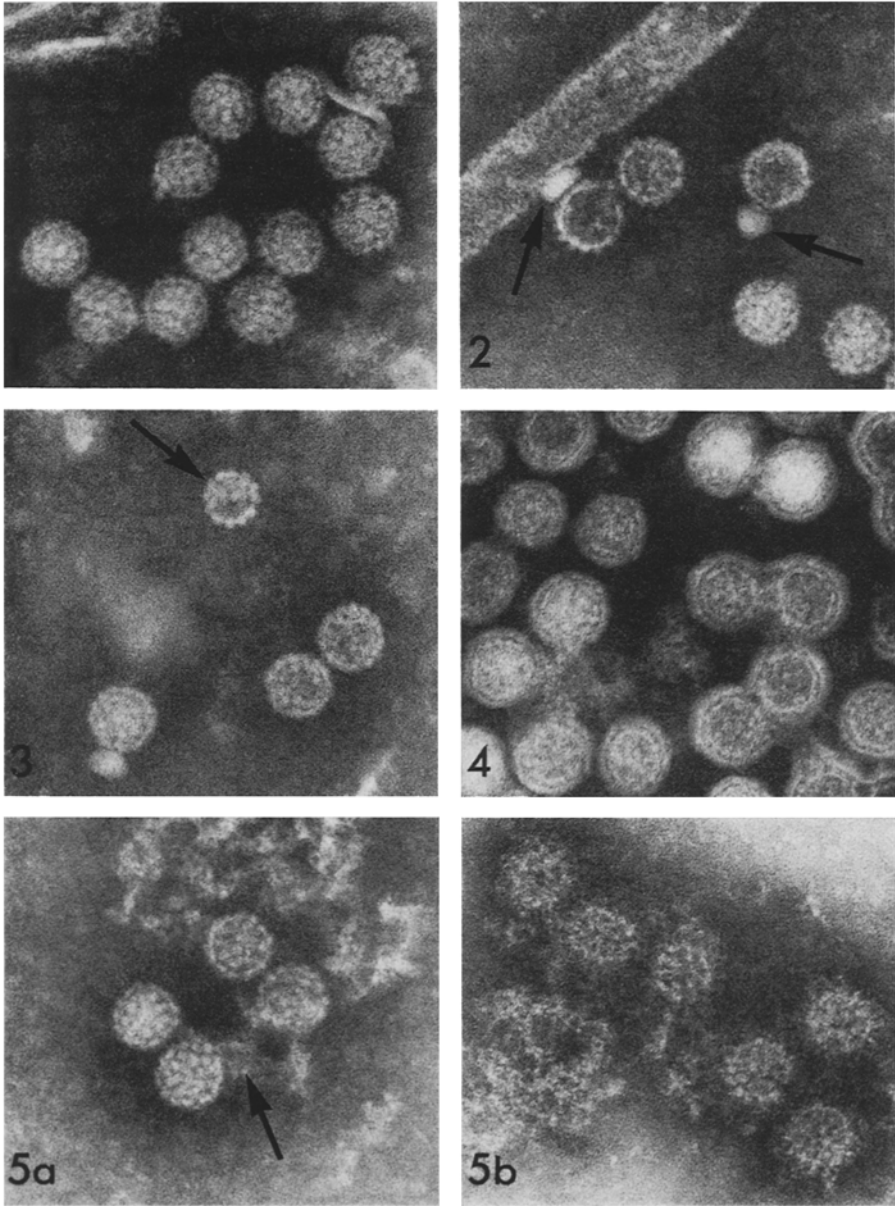


Erratum

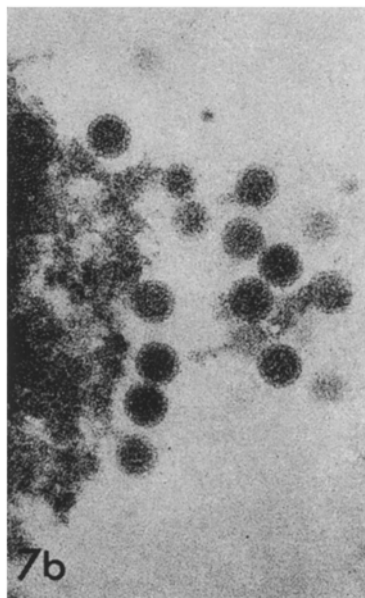
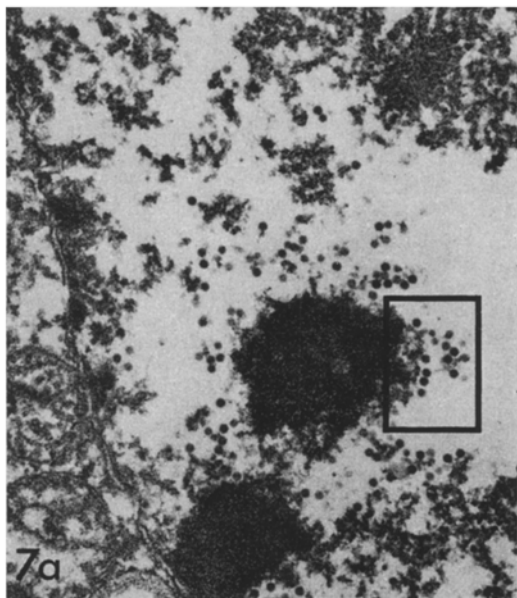
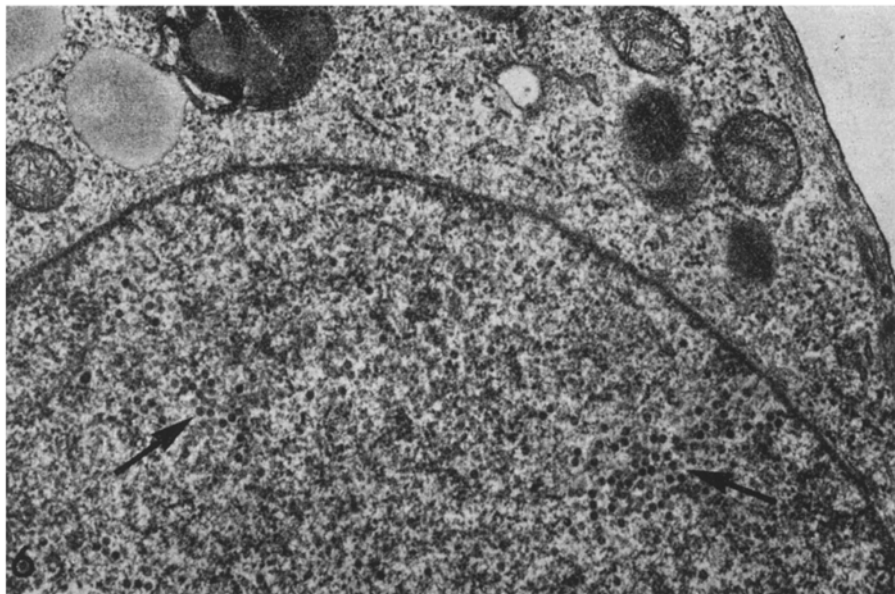
In the paper "Characterisation of a Polyomavirus in Two Foetal Rhesus Monkey Kidney Cell Lines Used for the Growth of Hepatitis A Virus" by J. E. RICHMOND, J. V. PARRY, and S. D. GARDNER [Arch. Virol. **80**, 131—146 (1984)] the reproductions of Figs. 1—5 on p. 135 and of Figs. 6 and 7 on p. 138 are unsatisfactory due to a mistake by the printer.

We therefore reprint Figs. 1—7 on the following two pages.



Figs. 1—5

A Polyomavirus in Rhesus Kidney Cells FRhK-4 and FRhK-6



Figs. 6 and 7