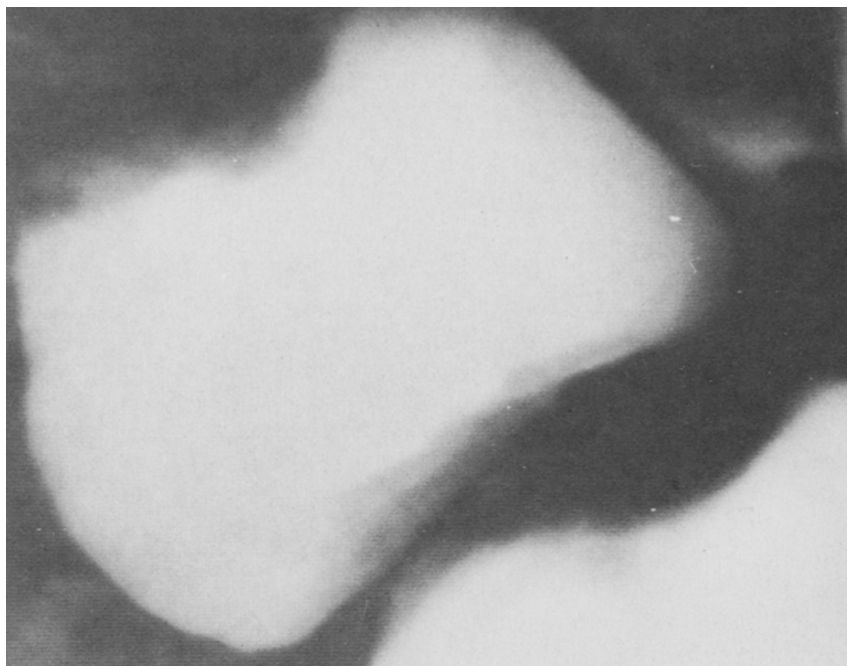


ERRATA

In the paper **Adult Acquired Antral Web**, by Michael J. Huggins, Arnold C. Friedman, Joel E. Lichtenstein, and James G. Bova (Dig Dis Sci

27:80-83, 1982), Fig 1 was printed upside down. Figure 1 should appear as follows:



In the paper **High Serum Levels of Secretory IgA in Liver Disease: Possible Liver Origin of the Circulating Secretory Component** by D.L. Delacroix, M. Reynaert, S. Pauwels, A.P. Geubel, and J.P. Vaer-

man (Dig Dis Sci 27:333-340, 1982), the text of the ordinates of the left and right panel of Fig 2 were inverted. Figure 2 and its legend should appear as follows.

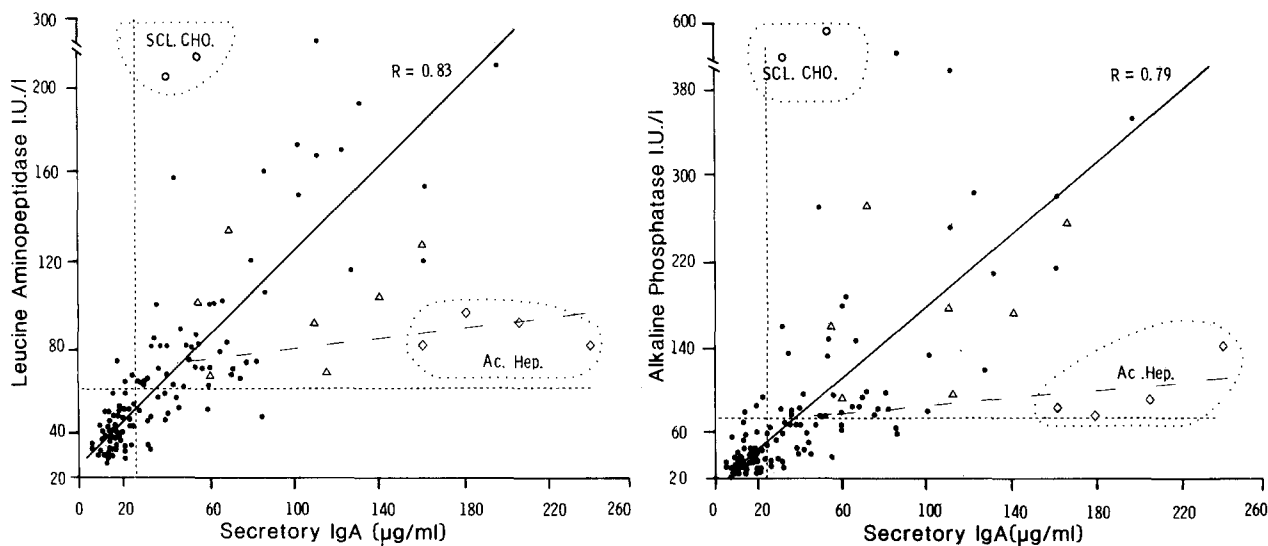


Fig 2. Correlations between values of sIgA and LAP (left) or AP (right) in 110 patients with chronic parenchymal LD (●). Data from patients with sclerosing cholangitis (○), AH (◇) and BTO (△) are not involved in the calculations of the correlation coefficients (r). Dotted lines represent the upper limits of control ranges. The dashed lines represent the linear regression in the whole group of AH.