

## Erratum

D. Gopala Rao, G. C. Bhattacharya, M. V. Ramana, V. Subrahmanyam, T. Ramprasad, K. S. Krishna, A. K. Chaubey, G. P. S. Murty, K. Srinivas, Maria Desa, S. I. Reddy, B. Ashalata, C. Subrahmanyam, G. S. Mital, R. K. Drolia, S. N. Rai, S. K. Ghosh, R. N. Singh, and R. Majumdar, 'Analysis of Multi-Channel Seismic Reflection and Magnetic Data Along 13° N Latitude Across the Bay of Bengal,' *Marine Geophysical Researches* 16, 225–236 (1994).

The quality of the printed Figure 2 in this article was unfortunately not up to standard. This figure has been reprinted on the next page. The publisher regrets any inconvenience caused.

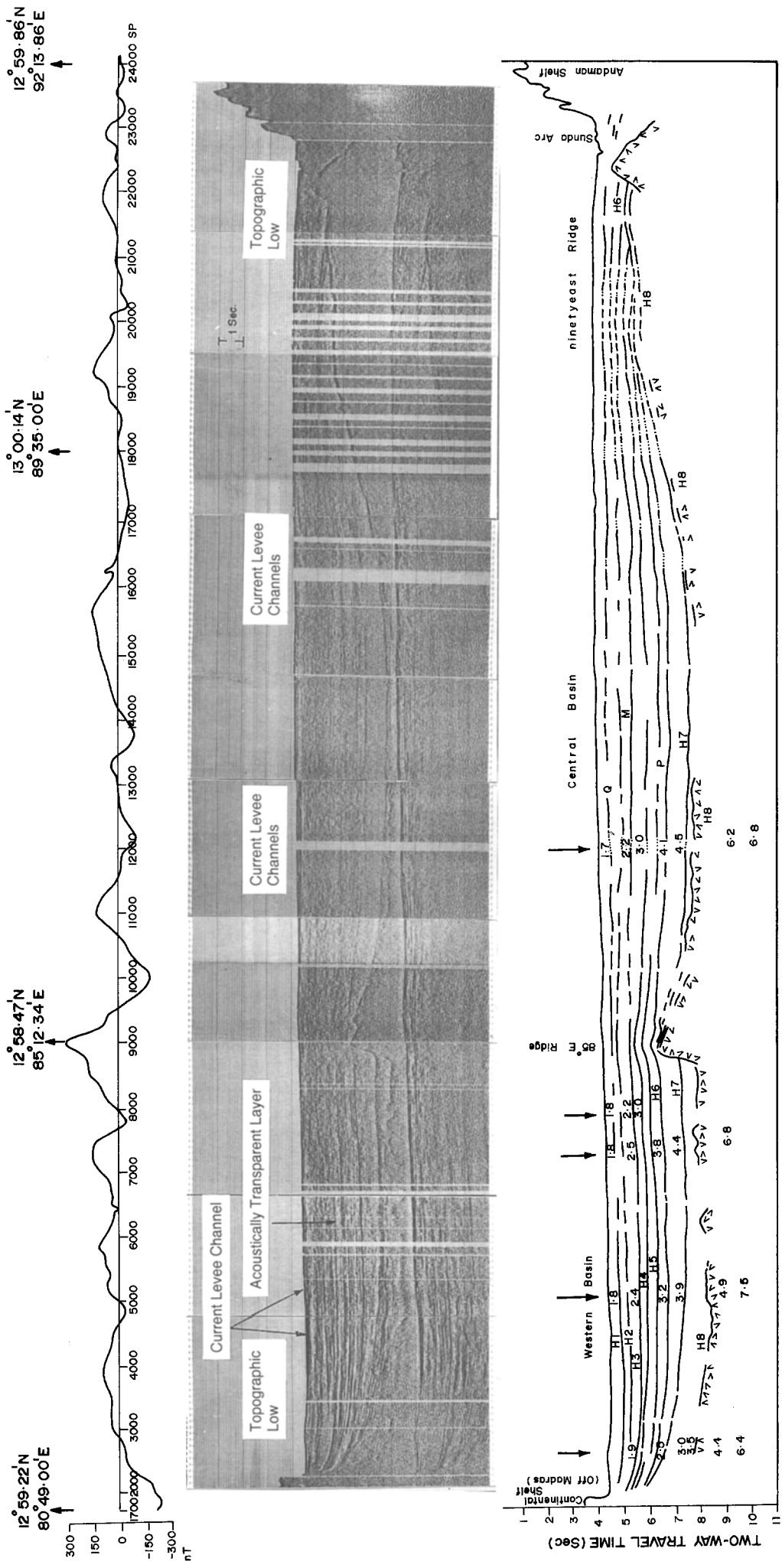


Fig. 2. Processed multichannel seismic reflection record along 13° N latitude across Bay of Bengal and its line diagram showing 8 seismic sequences, 85° E Ridge, Ninetyeast Ridge and discontinuous basement at places together with magnetic anomaly data. Arrows indicate seismic refraction stations (Curry *et al.*, 1982)