

16. Second Task Force on Blood Pressure Control in Children, Report. *Pediatrics* 79:1-26, 1987
17. Chiarelli F, Verrotti A, La Penna G, Morgese G, Low serum C4 concentration in type 1 diabetes mellitus. *Eur J Pediatr* 147:197-198, 1988
18. Ewing DJ, Clarke BF, Diagnosis and management of diabetic autonomic neuropathy. *Br Med J* 285:916-918, 1982
19. The DCCT Research Group, Diabetes Control and Complication Trial (DCCT): results of feasibility study. *Diabetes Care* 10:1-19, 1987
20. Eeg-Olofsson D, Hypoglycemia and neurological disturbances in children with diabetes mellitus. *Acta Paediatr Scand Suppl* 270:91-96, 1977
21. Haumont D, Dorchy H, Pelc S, EEG abnormalities in diabetic children. *Clin Pediatr* 18:750-753, 1979
22. Cryer P, Gerich J, Glucose counterregulation, hypoglycemia and intensive insulin therapy in diabetes mellitus. *N Engl J Med* 313:232-241, 1985
23. Bolli G, De Feo P, Compagnucci P, Cartechini MG, Angeletti G, Santeusano F, Brunetti P, Gerich JE, Abnormal glucose counterregulation in insulin-dependent diabetes mellitus: interaction of anti-insulin antibodies and impaired glucagon and epinephrine secretion. *Diabetes* 32:134-141, 1983
24. The Diabetes Control and Complications Trial Study Group, The effect of intense treatment of diabetes on the development and progression of long-term complications in insulin-dependent diabetes mellitus. *N Engl J Med* 329:977-987, 1993
25. Sundkvist G, Autonomic nervous function in asymptomatic diabetic patients with signs of peripheral neuropathy. *Diabetic Care* 4:529-534, 1981
26. Mulhauser I, Berger M, Sonnenberg G, Koch J, Jorgens V, Scherthaner G, Scholz V, Incidence and management of severe hypoglycemia in 434 adults with insulin-dependent diabetes mellitus. *Diabetes Care* 8:274-278, 1985
27. Gale EAM, The frequency of hypoglycemia in insulin-treated diabetic patients. In: Serrano-Rios M, Lefebvre PJ (eds) *Diabetes 1985*. Elsevier; Amsterdam, pp 934-937, 1986
28. Potter J, Clarke P, Gale E, Dave S, Tattersall R, Insulin induced hypoglycemia in an accident and emergency department: the tip of an iceberg *Br Med J* 285:1180-1182, 1982
29. Editorial, Awareness of hypoglycemia in diabetes. *Lancet* 2:371-372, 1987
30. Heller SR, MacDonald I, Herbert M, Tattersall RB, Influence of sympathetic nervous system on hypoglycemic warning symptoms. *Lancet* 2:359-363, 1987
31. White NH, Skor DA, Cryer PE, Levandoski LA, Bier DM, Santiago JV, Identification of type 1 diabetic patients at increased risk for hypoglycemia during intensified therapy. *N Engl J Med*. 308 485-491, 1983
32. Bjork E, Palmer M, Schvarcz E, Berne C, Incidence of severe hypoglycemia in an unselected population of patients with insulin-treated diabetes mellitus, with special reference to autonomic neuropathy. *Diab Nutr Metab* 4:303-309, 1990
33. Aman J, Karlsson I, Wranne L, Symptomatic hypoglycemia in childhood diabetes: a population based questionnaire study. *Diabetic Med* 6:257-261, 1989
34. Anderson BJ, Wolf FM, Bunkhart MT, Cornell RG, Bauen GE, Effects of peer-intervention on metabolic control of adolescents with IDDM: randomized out patient study. *Diabetes Care* 12:179-183, 1989
35. Buyschaert M, Lepair-Gadisseaux N, Weil R, Effect of an inpatient education programme upon the knowledge, behaviour and glycaemic control of insulin-dependent diabetic patients. *Diabete Metab* 13:31-36, 1987
36. Kaufman FR, Roe TF, Costin G, Lippi D, Residential treatment program for children with diabetes mellitus. *Diabetes Care* 10:665-666, 1987

ERRATUM

P. Pitukcheewanont · R. Alemzadeh · W. R. Jacobs · B. H. Jones · A. J. Eberle

Does glycaemic control affect growth velocity in children with insulin-dependent diabetes mellitus

Acta Diabetol (1995) 32: 148-152

Owing to an unfortunate error, $P=0.01$ was printed instead of $P<0.01$ in the caption of Fig. 3.

The correct figure caption is shown on the right. The publisher apologises for any inconvenience.

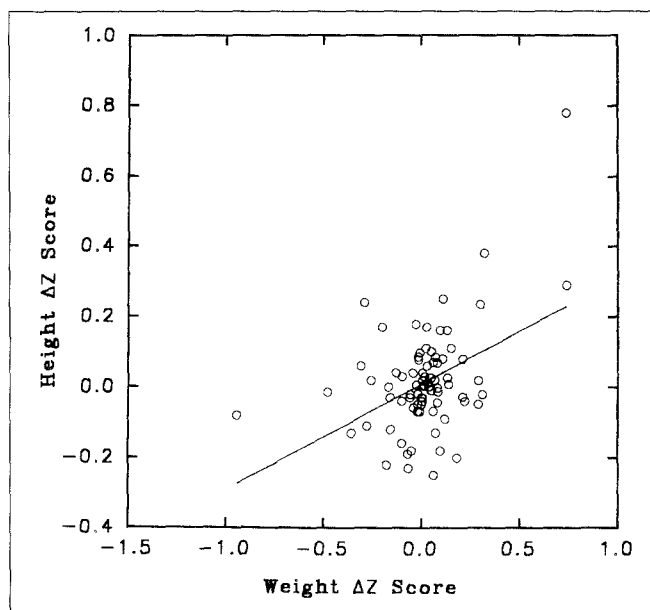


Fig. 3 Relationship between weight ΔZ score and height ΔZ score ($r=0.30$, $P<0.01$)