

Erratum

Current Genetics (1982) 5:97–107

Biogenesis of Mitochondria: Mapping of Transcripts from the *oli2* Region of Mitochondrial DNA in Two Grande Strains of *Saccharomyces cerevisiae*

Gary S. Cobon, Manfred W. Beilharz, Anthony W. Linanne, and Phillip Nagley

Due to technical oversights and a printer's error during proof-correction this article contains an incomplete version of Fig. 6 (lane 14 of panel A was omitted). In addition incorrect exposures of autoradiograms in Fig. 9

(lanes B, C, E, F) were printed. The correct versions of these figures are printed below. The figure legends in the original article are correct.

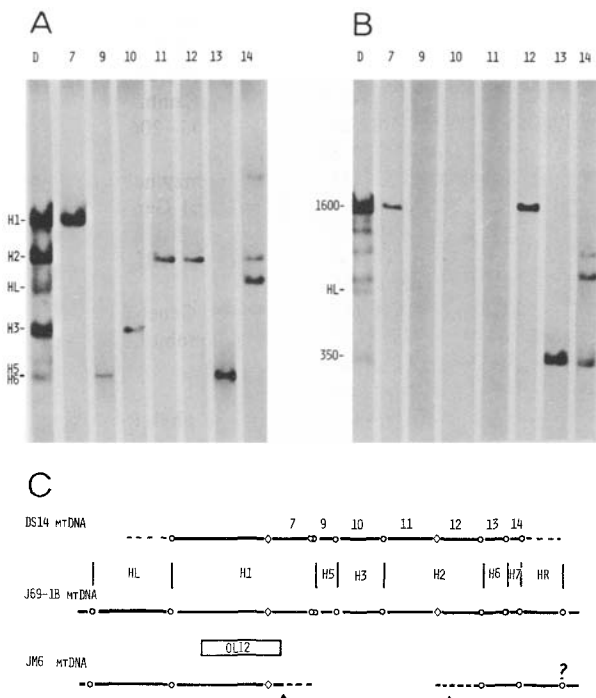


Fig. 6

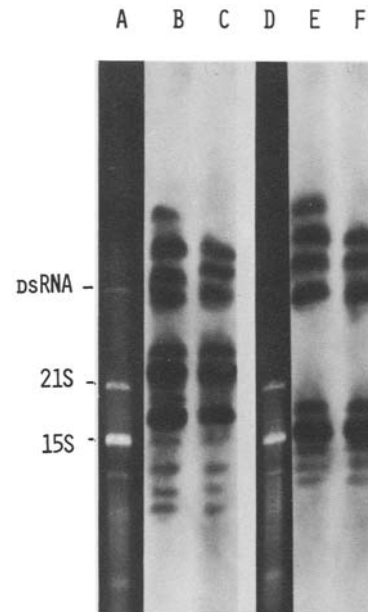


Fig. 9