

Erratum

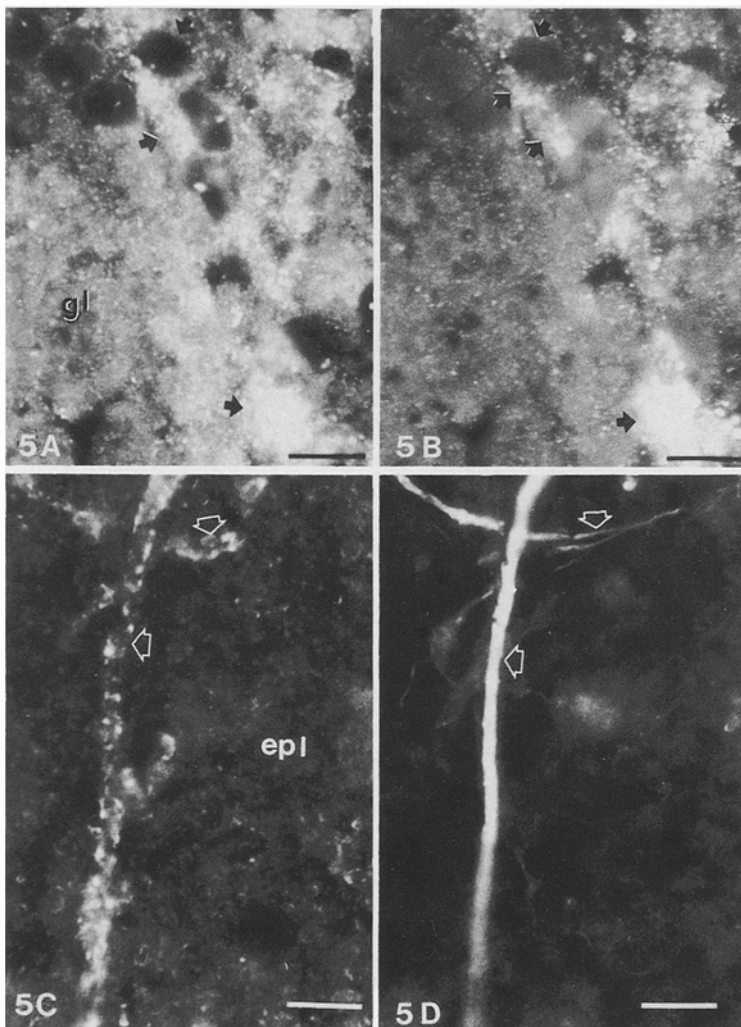
**Thy-1 is a neuronal and glial surface antigen
which interacts with matrix proteins and plasminogen activator**

P. Liësi¹, E.-M. Salonen², D. Dahl³, A. Vaheri², and S.-J. Richards⁴

Exp Brain Res (1990) 79:642–650

The Fig. 5 on page 647 is incomplete and shows only parts C and D, instead of the ones described as A, B. The figure legend got mixed up also.

Below please find the correct version of figure and legend:



→ (Referred to as Fig. 5a, b in the text of page 645, left column, line 7 from bottom)

Fig. 5 A, B. Double immunocytochemical localisation of Thy-1 (A) and galactocerebroside (B) in the olfactory bulb (gl) of adult rat brain. A Intense Thy-1 immunoreactivity is associated with small cell bodies (arrows) bordering the gomeruli and the external plexiform layer. Bar=20 µm. B The cell bodies in (A) are oligodendrocytes as revealed by their immunoreactive fibres with rabbit antibodies to galactocerebroside (arrows). Bar=20 µm. C, D Double immunocytochemical localization of Thy-1 (C) and 200K neurofilaments (D) in the olfactory bulb of adult rat brain. C Thy-1 immunoreactivity in the external plexiform layer (epi) is mainly confined to punctate deposits that form fibre like structures (open arrows). Bar=20 µm. D Double staining with a neurofilament antibody shows that Thy-1 (in A) is in association with nerve fibres which themselves do not express this protein (open arrows). Bar=20 µm