

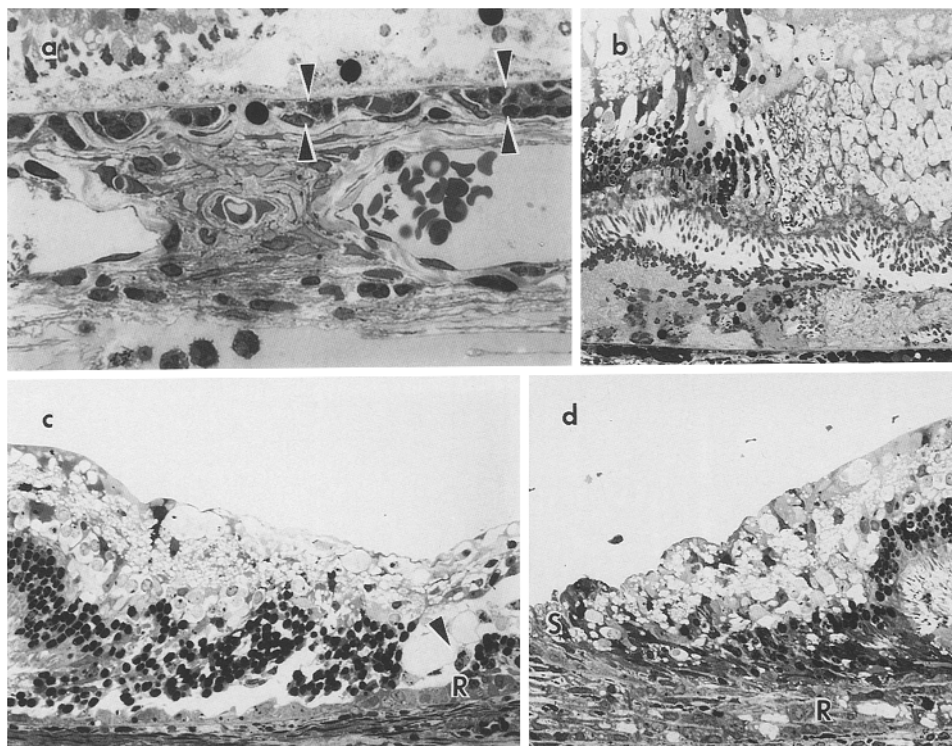
## Erratum

### A histopathologic study of retinal lesions inflicted by transscleral iontophoresis

Tim T. Lam, Jun Fu, and Mark O.M. Tso

Graefe's Arch Clin Exp Ophthalmol (1991) 229:389-394

Due to an unfortunate error; Fig. 5c was incorrect in the above article. The correct Fig. 5 is printed below.



**Fig. 5 a-d.** Histopathologic course of severe lesions (1.5 mA, 5 min). **a** Immediately after iontophoresis: occluded vessels (*arrowhead*) can be seen in the choroid; choroidal vessels were occluded **b** red blood cells, acute inflammatory cells, and fibrin.  $\times 540$ . **b** Immediately after iontophoresis: necrosis is visible through the entire thickness of the retina.  $\times 210$ . **c** 5 days after iontophoresis: macrophages (*arrowhead*) and proliferative RPE (*R*) can be seen.  $\times 210$ . **d** 14 days after iontophoresis: proliferative PRE (*R*) and a chorioretinal scar (*S*) are visible.  $\times 210$