

Erratum

Isolation of chalcone synthase and chalcone isomerase cDNAs from alfalfa (*Medicago sativa* L.): highest transcript levels occur in young roots and root tips

Heather I. McKhann¹ and Ann M. Hirsch*

Department of Biology, 405 Hilgard Ave., University of California, Los Angeles, Los Angeles, CA 90024, USA (* author for correspondence); ¹ Present address: Institut des Sciences Végétales, Avenue de la Terrasse, 91198 Gif-sur-Yvette, France

Plant Molecular Biology 24: 767–777, 1994.

There was an error in the above mentioned paper. In Fig. 1, part B, the legends for *Medicago sativa* and *Medicago truncatula* were reversed. The correct version is shown below:

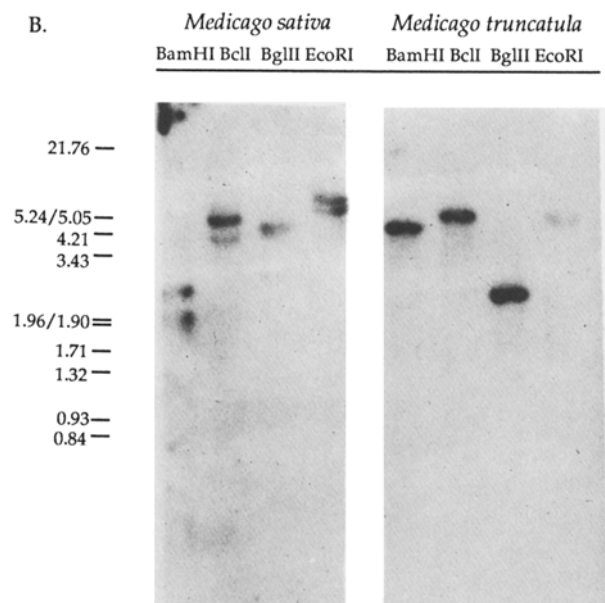


Fig. 1. Southern analysis of chalcone synthase and chalcone isomerase in alfalfa (*Medicago sativa* cv. Iroquois) and *Medicago truncatula* L. cv. Jemalong. Duplicate genomic Southern blots probed with full-length CHS4-1 probe (A) and CHI-1 probe (B). Restriction enzymes used are as indicated. Ca. 2 μ g DNA were loaded in each lane.