

Plate D-1 Medium-grained dolerite under crossed polars showing ophitic to sub-ophiotic texture. Plagioclase shows twinning, clinopyroxenes are birefringent, and accessory opaques occur as inclusions in clinopyroxene and plagioclase (Y38)

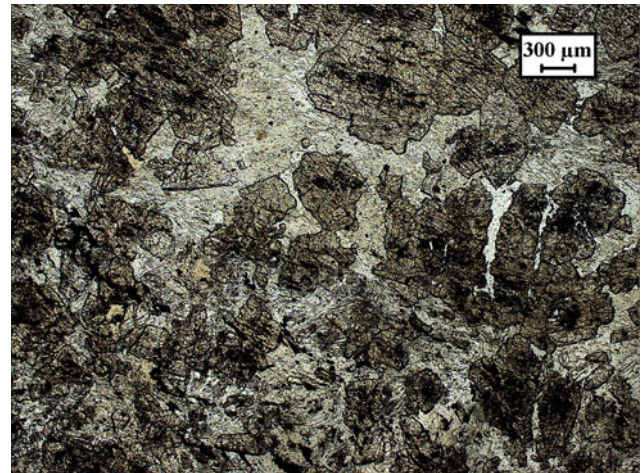


Plate D-2 Medium-grained diabase showing relict ophitic texture with highly altered plagioclase and clinopyroxene. The equant anhedral clinopyroxene grains are altered to a mixture of fine needles of tremolite, epidote and opaque minerals. The outlines of plagioclase are not visible and altered to albite. The groundmass is composed of secondary minerals that include chlorite (123-80-1)