



Correction to: Heads, Jaws, and Muscles

Janine M. Ziermann, Raul E. Diaz Jr, and Rui Diogo

**Correction to: J. M. Ziermann et al. (eds.), *Heads, Jaws, and Muscles*,
Fascinating Life Sciences, <https://doi.org/10.1007/978-3-319-93560-7>**

This book was inadvertently published with a mistake in Chapter 4. Figure 4.2 as the hybodont sharks were drawn as becoming extinct in the miocene when in fact they became extinct in the late cretaceous. The revised image has been updated in the chapter now.

In addition to this, affiliation of the co-editor Raul E. Diaz Jr has been changed as below.
Department of Biology
Southeastern Louisiana University
Hammond, LA, USA

The updated original online version for this book can be found at <https://doi.org/10.1007/978-3-319-93560-7>

This is the correct version

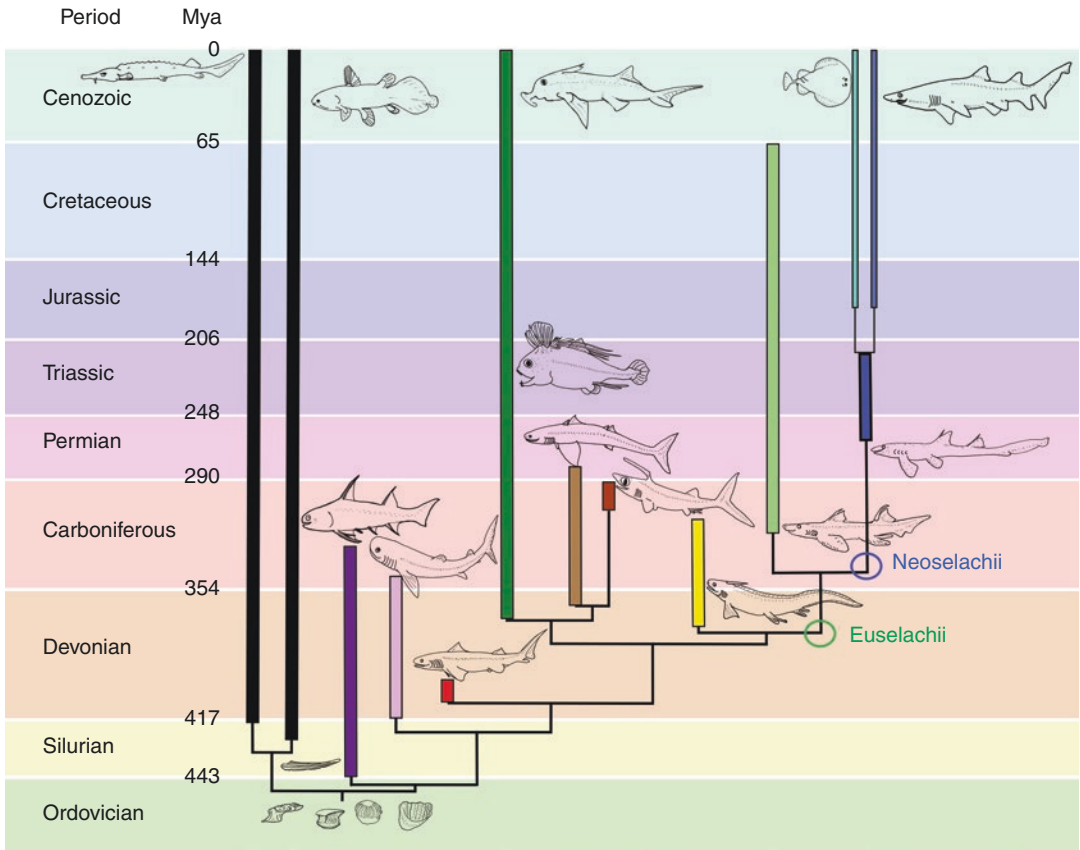


Fig. 4.2 Phylogeny of chondrichthyans showing the approximate time of first appearance of body fossils and extinction. Scales and spines of chondrichthyans and “acanthodians” are known from the Ordovician and Silurian and are illustrated by scales and fin at the base of the phylogeny. Topology and origination and extinction dates from Coates et al. (2018) and references in the text. Batoid and Selachimorpha split from Aschliman et al. (2012). All specimen drawings by CAB. **Black:** Osteichthyes, actinopterygians represented by a sturgeon (left) and sarcopterygian by a coelacanth (right). **Purple:** Acanthodid stem chondrichthyans represented by *Diplacanthus*. **Lilac:** Non-acanthodid stem chondrichthyans represented by *Gladbachus*. **Red:** *Doliodus*. **Dark Green:** Iniopterygians and holocephalans represented by *Rainierichthyes* (middle of dark green) and *Callorhinchus* (top of dark green). **Taupe:** Symmoriida represented by *Cladoselache*. **Brick red:** Paleoselachii represented by *Falcatus*. **Yellow:** Xenacanthiformes represented by *Triodus*. **Pale green:** Hybodontiformes represented by *Tristychius*. **Dark blue:** Neoselachii represented by *Synechodontiform*. **Aqua:** Batoidea represented by *Torpedo*. **Pale blue:** Selachimorpha represented by *Carcharias taurus*