

Erratum to: Bayesian Active Clustering with Pairwise Constraints

Yuanli Pei^(✉), Li-Ping Liu, and Xiaoli Z. Fern

School of EECS, Oregon State University, Corvallis, Oregon 97331, USA
{peiy,liuli,xfern}@eecs.oregonstate.edu

Erratum to:
Chapter 15 in: A. Appice et al. (Eds.)
Machine Learning and Knowledge Discovery
in Databases
DOI: 10.1007/978-3-319-23528-8_15

(i) In the original version, Figure 2 was wrong. The correct figure is shown on the next page.

The online version of the original chapter can be found under
DOI: 10.1007/978-3-319-23528-8_15

© Springer International Publishing Switzerland 2015
A. Appice et al. (Eds.): ECML PKDD 2015, Part I, LNAI 9284, pp. E1–E2, 2015
DOI: 10.1007/978-3-319-23528-8_44

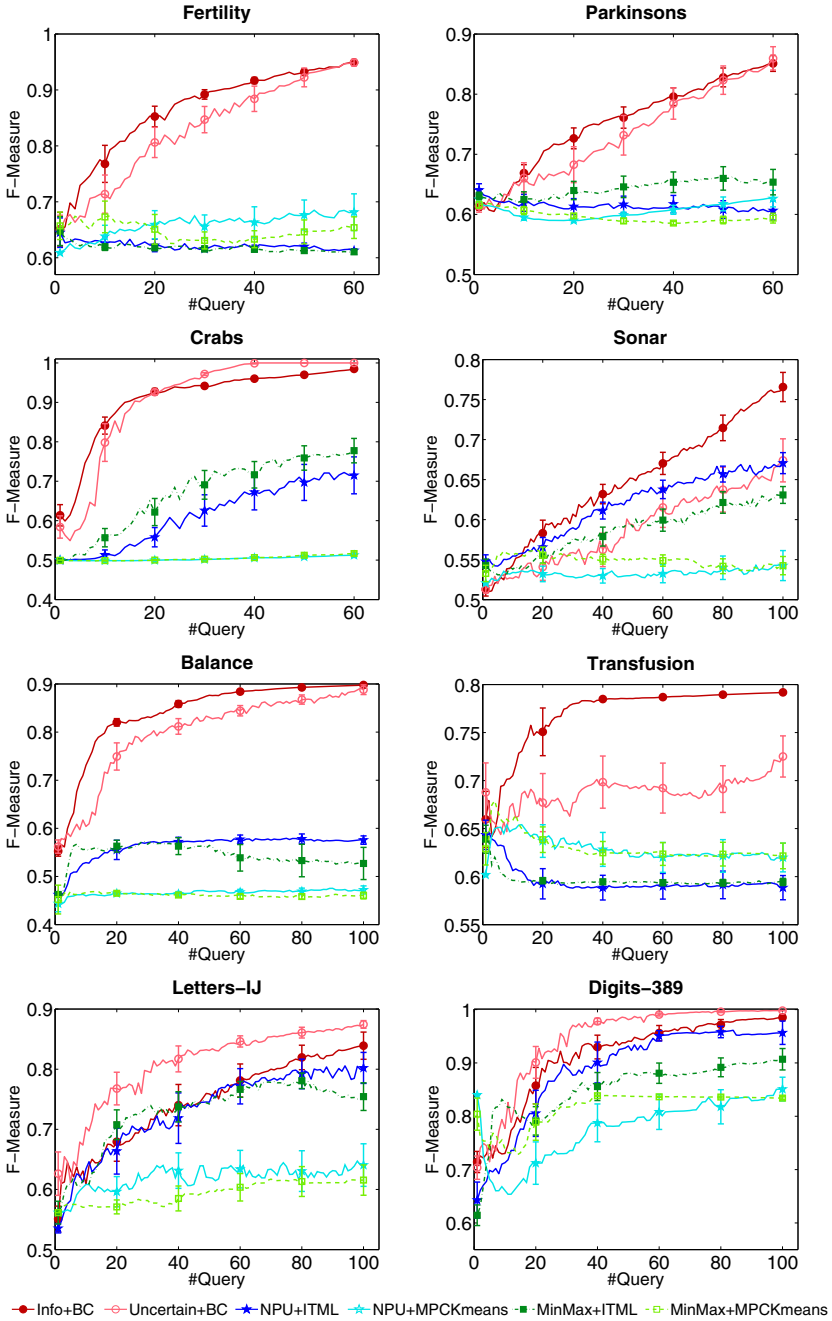


Fig. 2. Pairwise F-Measure clustering results of different *active clustering* methods with increasing number of queries. Results are averaged over 30 runs. Error bars are shown as mean and 95% confidence interval.