

- A 46-year-old woman
- Patient with chronic back pain, exacerbated by flexion and extension

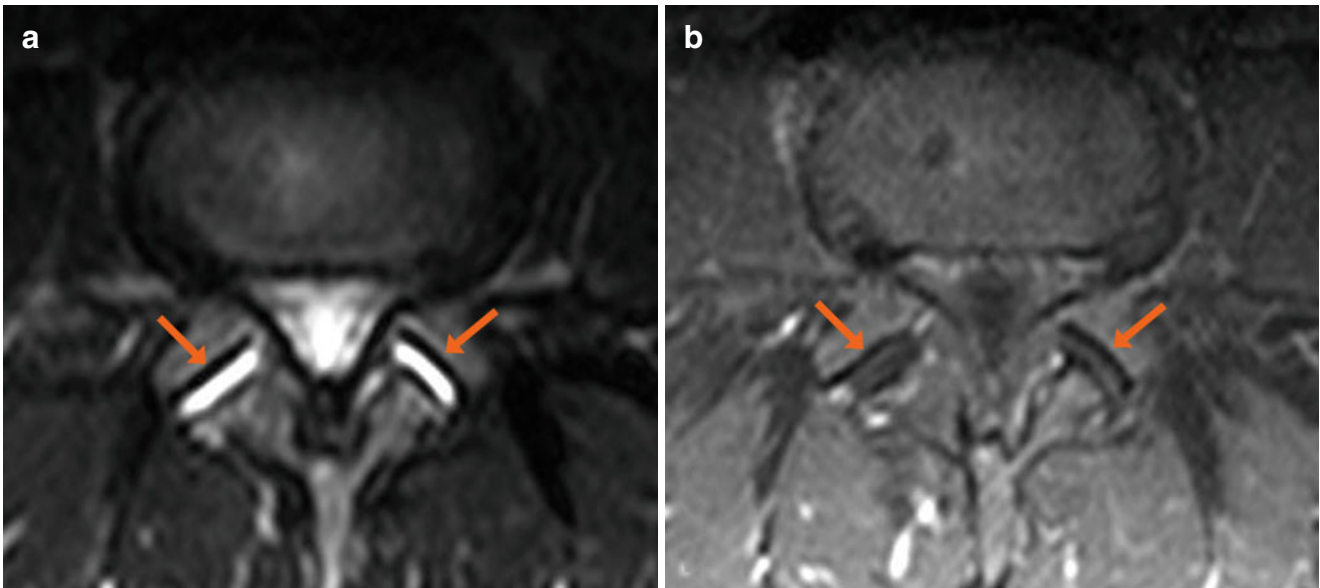


Fig. 1 (a, b) Axial TSE T2-weighted image with fat saturation (a), axial SE T1-weighted image with fat saturation following administration of contrast medium (b). Facet joints show widening of the joint space bilaterally. This space is

hyperintense in T2 (a, arrows), with no enhancement after contrast medium administration (b, arrows). These findings indicate joint effusion