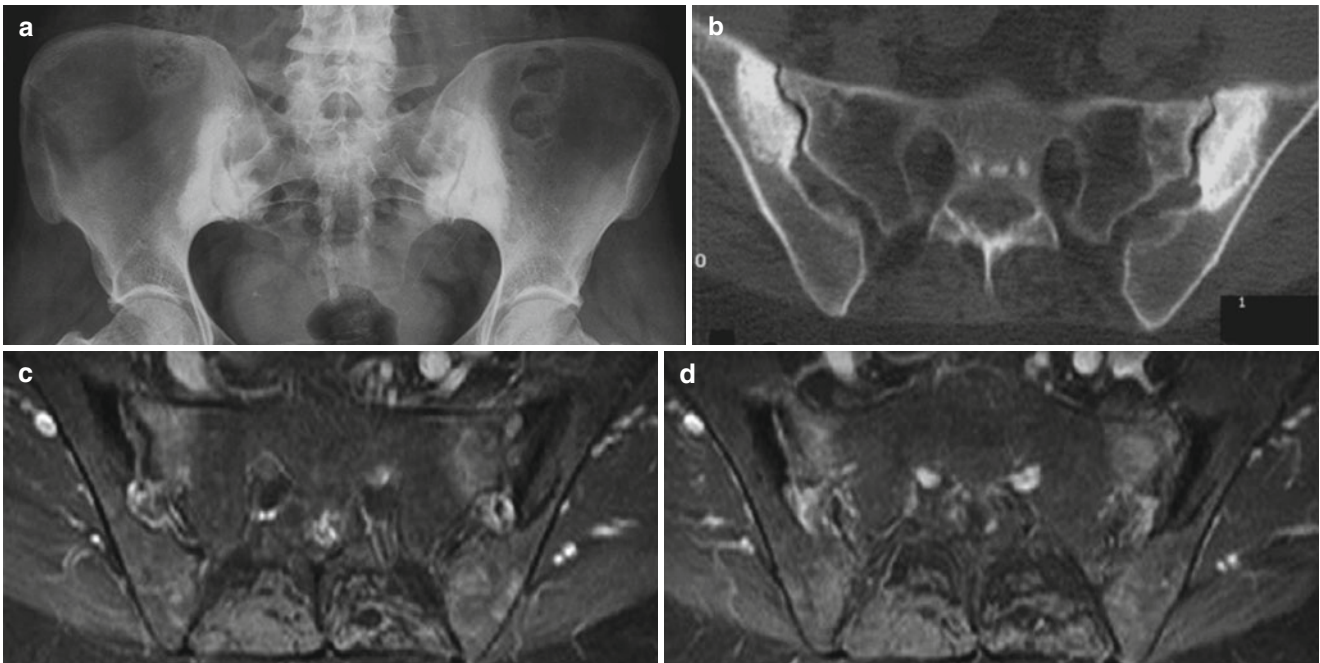


## Sacroiliitis

- A 48-year-old patient
- Chronic low back pain
- Psoriatic skin lesions



**Fig. 1** Plain film radiography (a), axial CT scan (b), axial contrast-enhanced T1-weighted images with fat saturation (c, d). Bilateral osteosclerosis of the sacroiliac joints (a). Axial CT scan (b) permits to better highlight the subchondral

osteosclerosis that is more marked on the iliac sides. MRI shows contrast enhancement on the subchondral sacral sides of the joints (c, d), indicating the active inflammatory phase of sacroiliitis