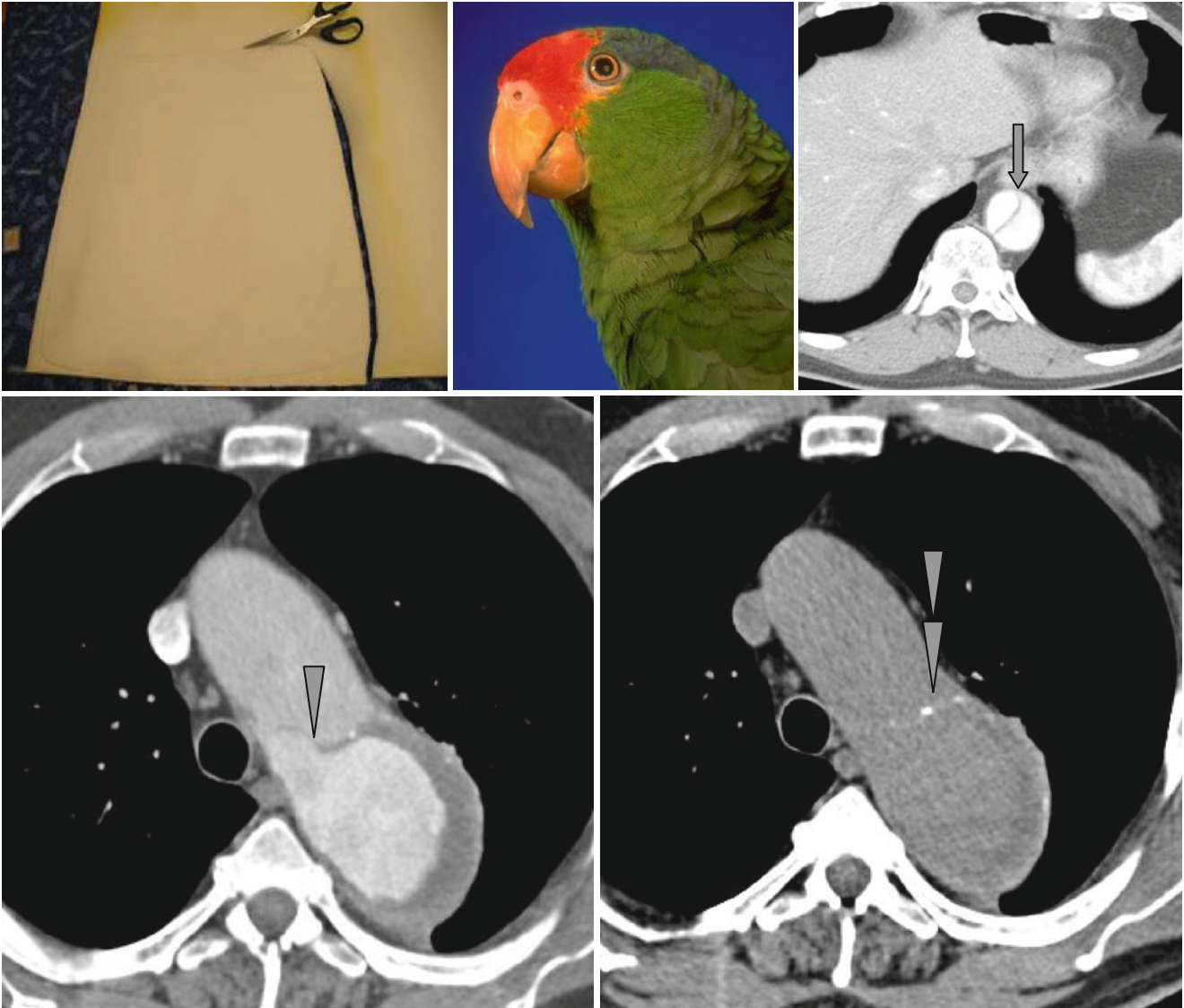


## Intimal Flap and Beak Sign



Detection of an “*intimal flap*” (better intimomedial flap) must be considered as the most reliable sign of aortic dissection which represents a linear filling defect after IV enhancement ( $\Delta$ ). This flap separates true and false channels of the aorta. The sharp marginal angle between the aortic wall and

the intimal flap so as its crescent form – “*beak*” sign – usually indicates the channel with lower intraluminal pressure ( $\uparrow$ ). These changes in the aorta can coexist with the “cobweb” sign. On native images, the “beak” sign becomes apparent when calcified intima moves inside ( $\blacktriangleright\blacktriangleright$ ).