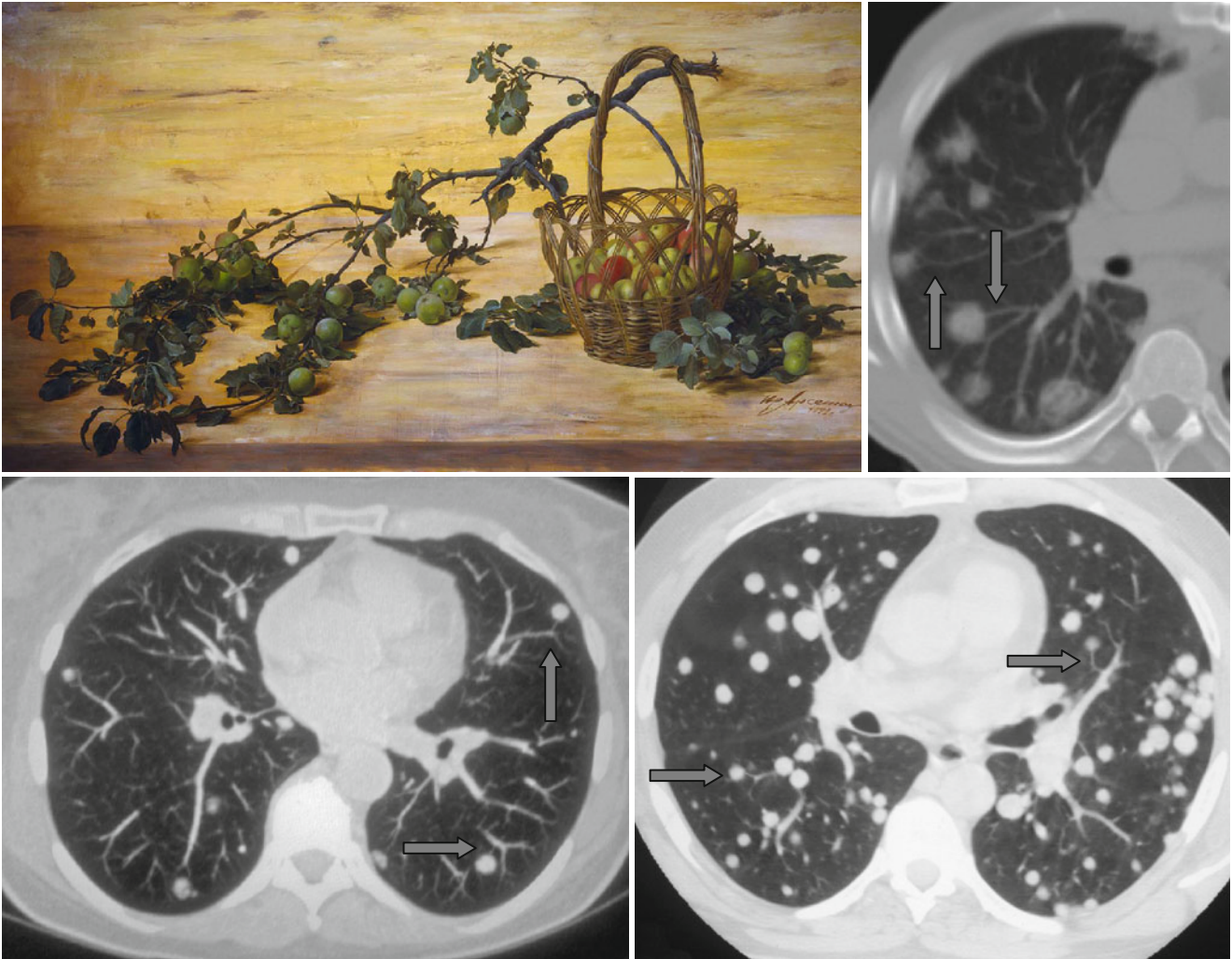


## Feeding Vessel Sign or Fruits on the Branch Sign



The “*feeding vessel*” sign also known as the “*fruits on the branch*” sign (↑) refers to the branch of a pulmonary artery leading directly to a nodule or a mass. This sign is most

often seen with pulmonary metastases and septic embolism and also frequently occurs in infarcts and arteriovenous fistulas. It is rarely seen in lung carcinomas and granulomas.