

Psoriatic Arthritis

Case 3

Posterior Spondylitis

- A 59-year-old patient
- Low back pain exacerbated by hyperextension
- Psoriasis

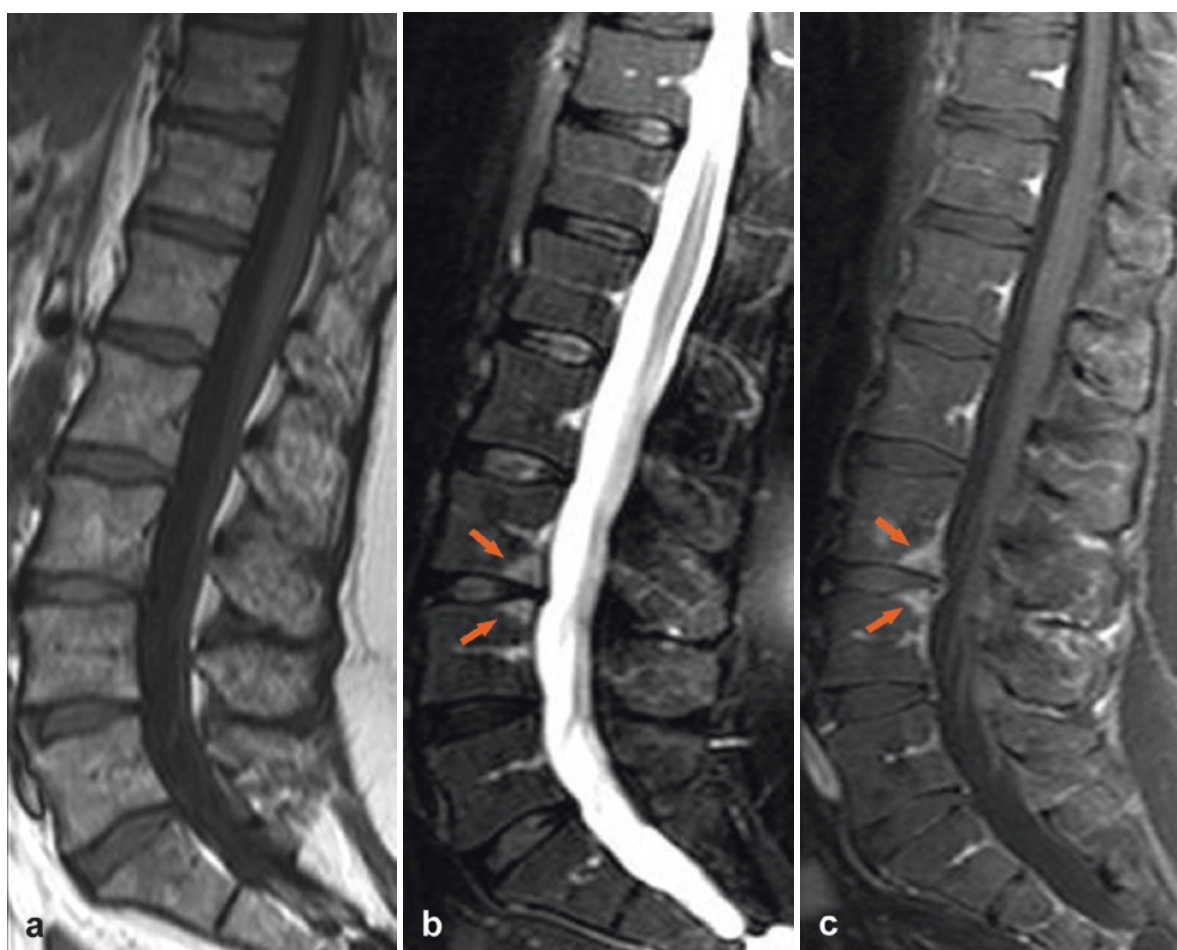


Fig. 1 Sagittal SE T1-weighted image (a), sagittal TSE T2-weighted image with fat saturation (b), sagittal SE T1-weighted image with fat saturation following the administration of contrast medium (c). T2-hyperintensity and contrast enhancement in the posterior corners of the opposing vertebral bodies L3/L4 (b, c, arrows). Posterior spondylitis in active inflammatory phase