

Psoriatic Arthritis

Case 8

Spondylodiscitis

- A 62-year-old man
- Lumbar and dorsal pain during the night
- Psoriasis

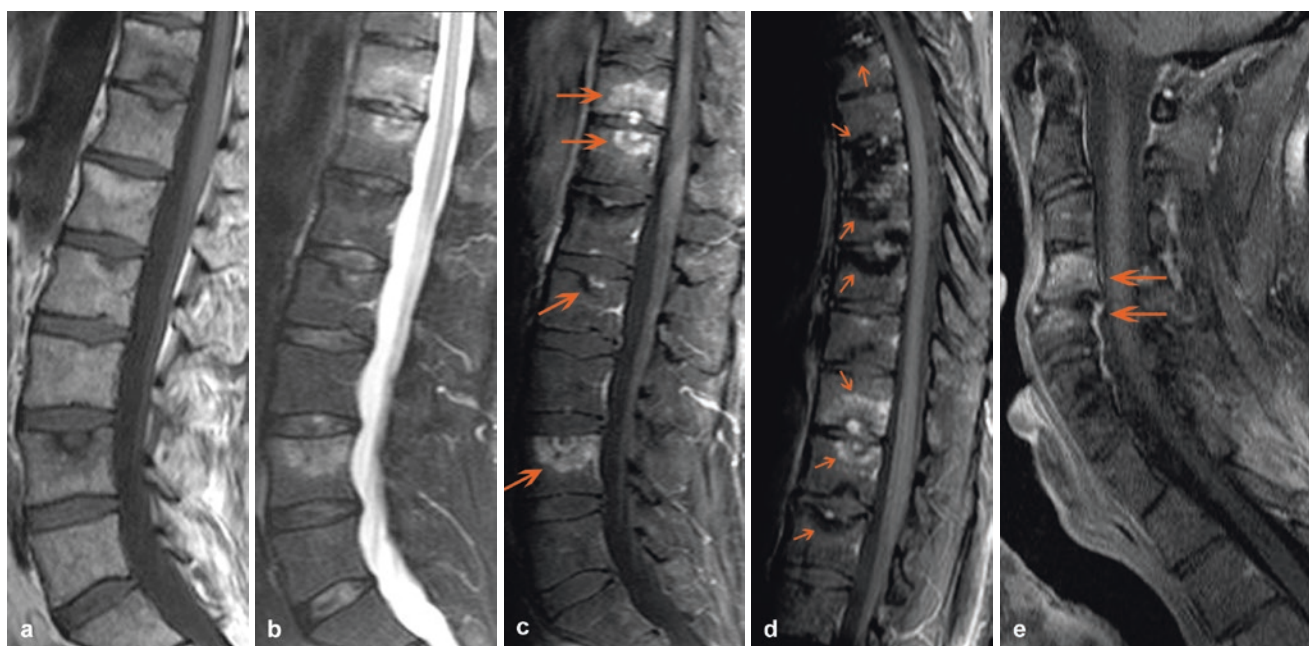


Fig. 1 Sagittal SE T1-weighted image (a), sagittal TSE T2-weighted image with fat saturation (b), sagittal SE T1-weighted images with fat saturation after the administration of contrast medium (c–e). Spondylodiscitis with multiple lesions in acute and/or chronic phase in cervical, dorsal, and lumbar spine (a–e, arrows). A typical active

Andersson lesion (spondylodiscitis) is visualized at D11/D12, with subchondral edema-osteitis, discitis, and erosions (a–d). An older Andersson lesion with fatty degeneration of the bone marrow is visualized at L1 (a)