

Neth Heart J

<https://doi.org/10.1007/s12471-019-1257-y>

Dark clouds of contrast

M. Boulaksil · J. E. M. Mellema · T. J. F. ten Cate

© The Author(s) 2019

A 59-year-old male patient was admitted to the Coronary Care Unit because of a non-ST-elevation acute coronary syndrome. An early angiography showed two-vessel coronary artery disease of a large obtuse marginal branch and the left anterior descending artery with two lesions (Fig. 1 and online video). What is your diagnosis?

Answer

You will find the answer elsewhere in this issue.

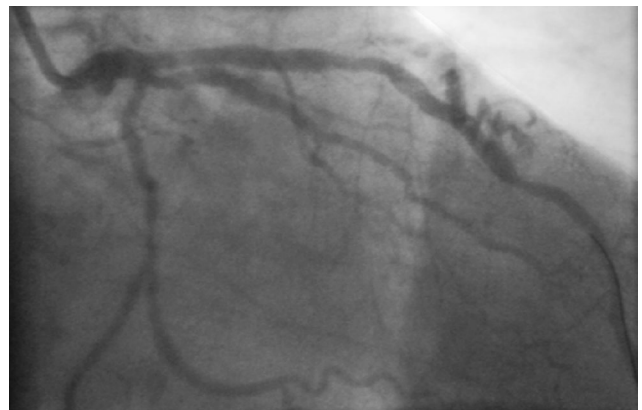


Fig. 1 Still image of right anterior oblique (RAO) view of the coronary angiography of our patient (see also the online video (online supplement))

Open Access This article is distributed under the terms of the Creative Commons Attribution 4.0 International License (<http://creativecommons.org/licenses/by/4.0/>), which permits unrestricted use, distribution, and reproduction in any medium, provided you give appropriate credit to the original author(s) and the source, provide a link to the Creative Commons license, and indicate if changes were made.

Electronic supplementary material The online version of this article (<https://doi.org/10.1007/s12471-019-1257-y>) contains supplementary material, which is available to authorized users.

M. Boulaksil (✉) · T. J. F. ten Cate
Department of Cardiology, Radboud University Medical Center, Nijmegen, The Netherlands
m.boulaksil@gmail.com

J. E. M. Mellema
Department of Cardiology, Slingeland Hospital,
Doetinchem, The Netherlands

