

Quantifying PM_{2.5} capture capability of greening trees based on leaf factors analyzing

Dan Liang¹ · Chao Ma^{1,2} · Yun-qi Wang^{1,2} · Yu-jie Wang^{1,2} · Zhao Chen-xi³

Received: 31 January 2016 / Accepted: 12 September 2016 / Published online: 19 September 2016
© The Author(s) 2016. This article is published with open access at Springerlink.com

Abstract As PM_{2.5} affect human health, it is important to target tree planting in the role of reducing air pollution concentrations. PM_{2.5} capture capability of greening trees is associated with leaf morphology, while quantitative research is scanty. In this paper, the PM_{2.5} capture capability of 25 species in Beijing and Chongqing were examined by a chamber device. Groove proportion, leaf hair, stomatal density, and stomata size were selected as indexes of leaf morphology. Results showed that groove proportion and stomata size significantly relate to PM_{2.5} capture quantity, while no significantly positive correlations were found for leaf hairs and stomatal density. Broadleaf species are conducive to PM_{2.5} capture for their

rich leaf morphology and have an edge over coniferous in PM_{2.5} capture per leaf area. However, coniferous had a larger PM_{2.5} capture capability per tree due to the advantage of a large leaf area. Significant difference existed between the species in Beijing and Chongqing due to the different leaf morphology. Urban greening trees are diverse and the structures are complicated. Complex ecological environment may lead to different morphology characteristics. Climate and pollution conditions should be considered when greening.

Keywords Beijing · Chongqing · PM_{2.5} capture capability · Deposition chamber · Leaf morphology · Groove proportion

Responsible editor: Philippe Garrigues

✉ Chao Ma
sanguoxumei@163.com

Dan Liang
liangdanbjfu@163.com

Yun-qi Wang
wangyunqi@bjfu.edu.cn

Yu-jie Wang
wyujie@bjfu.edu.cn

Zhao Chen-xi
zhaochenxiswd@126.com

¹ Soil and Water Conservation of Beijing Engineering Research Center, Beijing Forestry University, Beijing 100083, China

² Chongqing Jinyun Forest Ecological Station, School of Soil and Water Conservation, Beijing Forestry University, Beijing 100083, China

³ Beijing Institute of Hydrogeology and Engineering Geology (Beijing Institute of Geo-Environment Monitoring), Beijing, China

Introduction

Increasing PM_{2.5} concentrations have become the primary pollutants in many densely populated cities. In China, lots of cities are experiencing serious air pollution and bearing heavy burden of respiratory diseases (Shu et al. 2015; Fu et al. 2015). It has been documented that the incidence of lung cancer in Beijing was 1.055 for men and 1.149 for women due to 10 mg m⁻³ increase of PM_{2.5} concentration (Guo et al. 2014, 2016). Since 2001, the estimated average total mortality due to PM_{2.5} was approximately 5100 a year until 2012, and the unit capital mortality for all ages was around 15 in 10,000. Increasing PM_{2.5} concentration is the primary environmental problem, leading to an urgency of implementing air pollution abatement (Zheng et al. 2015).

Phytoremediation can clean air to a great extent depending on its capability of reducing speed velocity and capturing particles (Popek et al. 2015). The effectivity of trees to capture PM_{2.5} has been addressed a lot. Some authorities proposed tree planting as a dominant measure to alleviate airborne fine particulate matter. These plants commonly have a large

surface area to filter PM out of the air by their removing or capturing capability derived from the leaf surface (Nowak et al. 2013; Chen et al. 2015). Understanding the PM_{2.5} capture capability of trees is crucial to assess the role of urban forest construction policies in reducing PM_{2.5} concentrations.

Many attempts have been made to quantify the effectiveness of urban trees in capturing PM_{2.5} (Dzierżanowski et al., 2011; Gromke and Ruck 2012; Sæbø et al. 2012; Speak et al. 2012; Poppek et al. 2013). Although high effectiveness of trees has been demonstrated, significant differences between species were recorded. Both species and location to the pollution source are critical in determining the effectiveness (Pullman, 2009; Mori et al. 2015). Previous studies suggested that urban planting in the future should focus on the utility of conifers (Beckett et al. 1998; Beckett et al., 2000a, b). Species-specific features, such as leaf surface, leaf type, leaf area index, and leaf morphology, act as the main structures and are important factors affecting capture capability. Broadleaf species with rough leaf surfaces can capture more PM_{2.5} than those with smooth leaf surfaces (Nguyen et al. 2015), indicating that plant choices are important because proper or reasonably planned layout of them can maximize the efficiency in air pollution abatement (Fowler et al. 2004; Räsänen et al. 2013).

Pervious works qualitatively examined on the leaf roughness, leaf hair, stomatal density, and stomata size (Sæbø et al. 2012). However, a detailed quantitative research is necessary to analyze the influence of leaf morphology on PM capture capability. In this paper, the effectiveness of 25 tree species in capturing PM_{2.5} was examined using a chamber device. Tree leaves were sampled in growing season (e.g., from May to September), then dried and exposed to NaCl aerosol particles

in the chamber device. Groove proportion, leaf hair, stomatal density, and stomata size were quantified using scanning electron microscopy (SEM). Capturing efficiencies were measured at controlled NaCl concentrations and duration and analyzed regarding leaf morphology.

Materials and methods

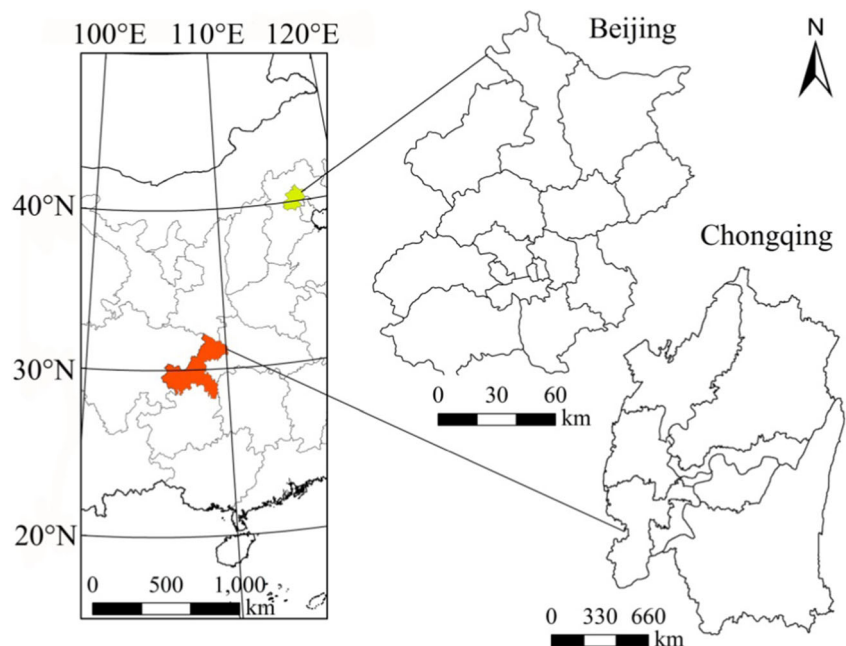
Study site and plant material

Fifteen species in Chongqing and 10 in Beijing were tested (Table 2). Beijing is located in the northwest of China and is a densely populated city with monsoon climate and poor air quality (39.54° N, 116.23° E) (Fig. 1). Previous documents revealed that PM_{2.5} concentrations in Beijing have increased in recent years (the annual PM_{2.5} concentration in 2014 was 85.9 μg m⁻³, data from Environmental Protection Administration, China). Chongqing (29.59° E, 106.54° N) has a relatively clean and humid subtropical monsoon climate. Local annual PM_{2.5} concentration in Chongqing 2014 was 62.8 μg m⁻³ (data from Environmental Protection Administration, China). In addition, there are 5 common species among the total 25 species including *Platanus orientalis*, *Broussonetia papyrifera*, *Ginkgo biloba*, *Magnolia soulangeana*, and *Pinus massoniana*. Besides, 20 species are broadleaf species, others are conifer.

Sampling

All trees distributed along urban main roads where heavy traffic pollution dominate. Daily meteorological data were

Fig. 1 Location of the two sampling sites



obtained by an automatic weather station at a height of 1.5 m above the ground in both cities. Temperature, humidity, wind speed, and precipitation were recorded. Meteorological data and PM_{2.5} concentrations (Environmental Protection Agency, China) during May to September 2014 were shown in Table 1.

Four trees of each species were sampled twice a month from May to September. These trees were grown well, with similar age, and a diameter at breast height (*DBH*). Note that the first year twigs can provide better information on pollution than perennial twigs. We sampled the first year twigs from four directions at three heights (low, middle, and high layer of canopy), which were at a 1.0–2.0-m height above ground level depending on the tree structure. Twelve twigs in each tree were sampled with weight ranging from 300 to 500 g, then, washed with 500 mL deionized water in the laboratory. Lastly, 12 sampled twigs of each tree were dried in an incubator and exposed to PM_{2.5} in a chamber device.

We assumed that all leaves of a tree are comparable to sampled ones and exposed to the same pollution concentration in field conditions. In order to investigate the PM_{2.5} capture capability of a tree, we multiplied the masses of PM_{2.5} per unit leaf area by total leaf area. Leaf area index (*LAI*) and vertical projection area of the crown (*S_v*) were applied to estimate total leaf area. A tape measure and *DBH* ruler were used in the field to measure the *DBH*, tree height (*H*), and crown diameter (*C*).

Chamber device

Particles gradually accumulate on the surfaces of tree leaves until there is a dynamic equilibrium between deposition and loss (Mitchell et al. 2010). Aerosol particles with controlled concentration and size can be generated by an aerosol generator. In this research, sodium chloride (NaCl) solution with a concentration of 0.1 mol L⁻¹ was chosen as the PM_{2.5} source (Freer-Smith et al. 2004) because the component of PM_{2.5} in Beijing and Chongqing mainly consists of sulfate, nitrate, black carbon, and organic pollutants (Guo et al. 2014), while Cl⁻ was less. Thus, there is no background interference (Beckett et al., 2000a, b; Freer-Smith et al. 2004). Pressure of aerosol generator was set to 25 psi, ensuring aerosol particle diameters were under 2.5 μm. PM_{2.5} concentration at downstream of the vacuum pump was measured 5 min at a time by DustMate (Turnkey Instruments, UK). Each test lasted about half an hour when PM_{2.5} concentrations remain stable. An

average PM_{2.5} concentration of 550 μg m⁻³ was determined. After being exposed to PM_{2.5} in a sedimentation chamber (Fig. 2), twigs were washed by 500 mL deionized water and the filtrates were collected. Ion chromatograph (Dionex ICS-1600, USA) were used to detect the concentration of Cl⁻ (mg mL⁻¹).

Statistics and classification of leaf morphology

Leaves were dried under air temperature of 80 °C in an oven. Two small square samples with a length of 5 mm and 1–2 cm to the central vein were cut from both leaf sides. Then, the samples were stick to the observation platform and plated with gold by ion-plating apparatus of Scan Electron Microscopy (SEM, Hitachi S-3400 N, Japan). Afterward, we magnified them to 150–2000 times to observe the leaf morphology.

Sampled 25 species have distinctive grooves (Fig. 3a–d), such as stripe, net, corrugated, nodular, or verruca, where PM_{2.5} is often deposited. Proportion of groove (*G*) is expressed as follows:

$$G = A_g/A_t \times 100\% \quad (1)$$

where *A_g* (μm²) represents the projection area of groove, *A_t* represents the area of the leaf sample (μm²).

Leaf hair per unit area (1 mm²) on both leaf sides was counted (Fig. 3e–g). It is noted that leaf hairs of most sampled trees are longer than 150 μm, while leaf hairs of some trees are shorter than 150 μm. A correction factor (*c₁* = 0.4) was introduced for the leaf hair shorter than 150 μm. The length of the major long axis was considered as the stoma size. Stoma number per unit leaf area was counted to calculate the stoma density (Fig. 3h–k).

Data analysis

Leaves were dried by airing after washing. For broadleaf species, leaf area was obtained by the leaf area meter (YMJ-B). For needle leaves, an equation was used (Li et al. 2001). Captured PM_{2.5} per unit area (*APM_{2.5}*) is expressed as:

$$APM_{2.5} = C_i V/A_i \times 10^6 \quad (2)$$

where *C_i* represents Cl⁻ concentration in the filtrate and

Table 1 Meteorological data and annual PM_{2.5} concentrations from May to September 2014

City	Growing season	Temperature (°C)	Humidity (%)	Wind speed (m s ⁻¹)	Precipitation (mm)	Average PM _{2.5} concentration (μg m ⁻³)
Chongqing	May–September	25.2	77.8	1.3	713.3	60.5
Beijing	May–September	23.1	40.5	2.0	395.2	85.9

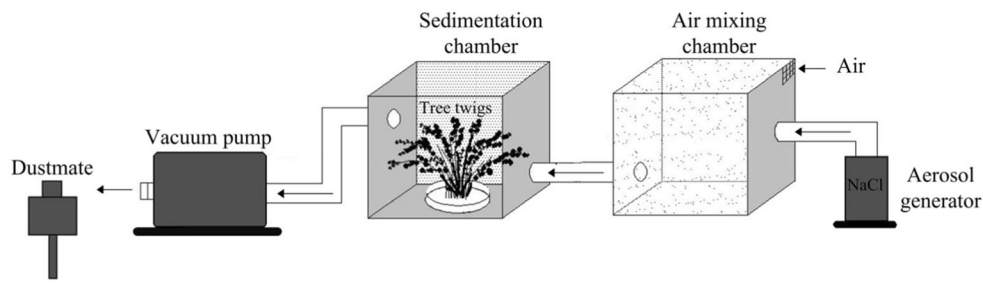


Fig. 2 Components of chamber device (Vacuum pump, Tai guan JP-40V; Aerosol generator, SH600; sedimentation chamber and air mixing chamber, a cube of side length is 400 mm, which consistent with Hwang

et al. (2011), made from acrylic board. Twigs were placed in the center of the sedimentation chamber)

V represents the volume of the filtrate (500 mL). A_i represents the leaf areas. Total leaf area(Y) is represented as (Yang. 2011):

$$Y = S_t \cdot LAI \tag{3}$$

$$S_t = \frac{1}{4} \pi C^2 \tag{4}$$

where LAI represents leaf area index, S_t represents vertical projection area of the crown, and C represents the average crown diameter. Then, captured $PM_{2.5}$ per tree (T , mg) is calculated as follows:

$$T = APM_{2.5} \cdot Y \tag{5}$$

Results

Leaf area per tree

Particle capture capability positively relate to the total leaf area per tree (Song et al. 2015). The difference in total leaf area per tree was examined by one-way ANOVA analysis and K-means clustering analysis. One-way ANOVA analysis showed that the total leaf area had significant difference among the 25 species ($P < 0.01$). Then, all the species were divided into four

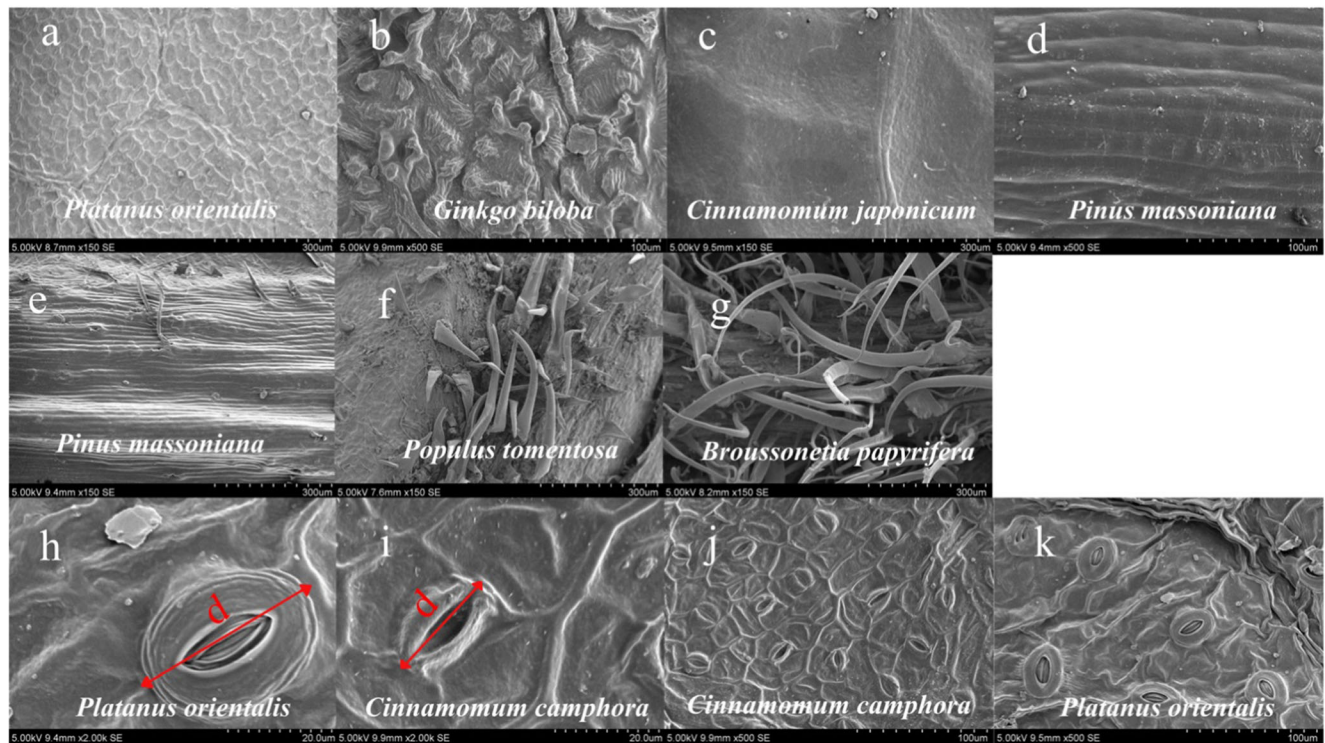
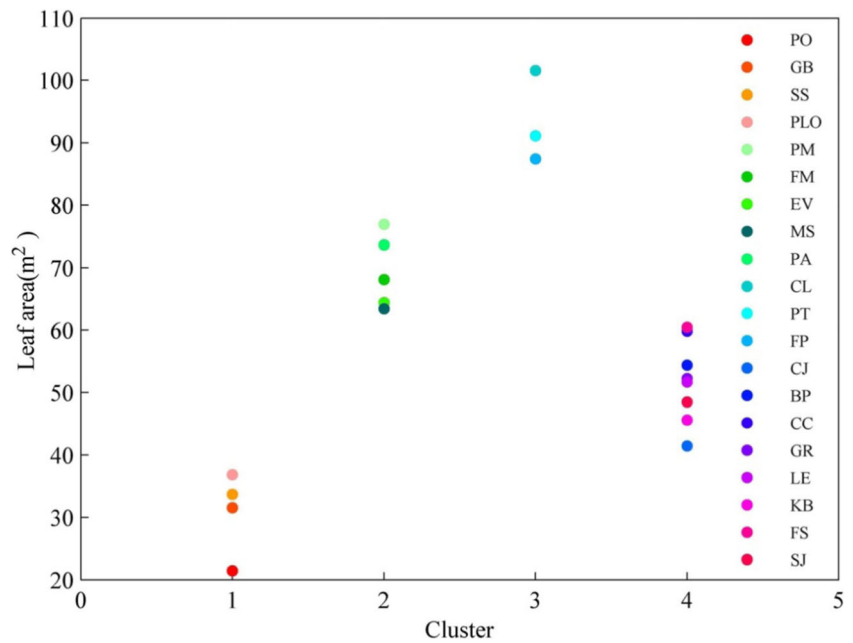


Fig. 3 Typical leaf morphology of the tested trees (a–d represents net, nodular or verrucous, stripe and corrugated groove, respectively. e–g embodies the leaf hair difference which represents hairless, sparse hair and hairy, respectively. h–k showed different stomatal type. h and i

represent the stomatal that major semi-axis greater than 20 μm and less than 20 μm , respectively. j and k refer to the stomatal density greater than 100 mm^{-2} and less than 100 mm^{-2} , respectively)

Fig. 4 Cluster analysis of the total leaf areas per tree



clusters (Fig. 4). The first cluster includes *P. orientalis*, *G. biloba*, *Symplocos setchuensis*, and *Platycladus orientalis*. Their leaf areas range from 21 to 37 m². Species of the second cluster includes *P. massoniana*, *Ficus microcarpa*, *Erythrina variegata*, *Magnolia soulangeana*, and *Pinus armandii*, and have leaf areas ranging from 63 to 77 m². The third cluster contains *Cunninghamia lanceolata*, *Populus tomentosa* and *Fraxinus pennsylvanica*, with leaf areas ranging from 87 to 102 m². Others belong to the fourth cluster with a leaf area between 42 and 61 m². We found that the total leaf area was superior for conifer (except *P. orientalis*) and lower for broad-leaf species.

Outcome of leaf morphology

Groove proportion ranges from 3 to 25 % and mostly between 10 and 20 %. There are about 50 % trees without leaf hair. Leaf hair of *B. papyrifera*, *Litsea elongata* in CQ, and *B. papyrifera*, *P. tomentosa* in BJ are 63.33 ± 11.60 , 60.66 ± 7.14 , 71.41 ± 9.28 , 47.19 ± 9.41 mm⁻², respectively, which is larger than others. *P. orientalis* in both cities and *F. microcarpa* in CQ have larger stomatal density and stomata size. *Cinnamomum camphora* in CQ and *M. soulangeana* in BJ have bigger stomata size.

APM_{2.5} at different classified levels is shown in Fig. 5. In total, APM_{2.5} increase as the groove proportion and leaf hair rise. The APM_{2.5} is less than 1 mg m⁻² when groove proportion is lower than 10 %. However, it sharply increases to 3 mg m⁻² when groove proportion exceeds 20 %. The APM_{2.5} at different classified levels of leaf hair shows that (1) species without leaf hair seems to capture the lowest APM_{2.5} (1.20 mg m⁻²), (2) significant increase in APM_{2.5}

(1.85 mg m⁻²) when leaf hair ranges from 0 to 50 mm⁻², (3) largest APM_{2.5} exists when leaf hair exceed 50 mm⁻². In spite of the little increase of APM_{2.5} with stomata size and stomatal density, APM_{2.5} concentrate at a high level when stomata size and stomatal density exceed 20 μm, 100 mm⁻², respectively.

Difference in capturing efficiency among the trees

After sedimentation, elution, and sample detection, captured PM_{2.5} per unit leaf area and per tree of each species were calculated (Table 2). A significant difference exists between species ($P < 0.01$). For the captured PM_{2.5} per unit leaf area, *C. lanceolata*, and *Grevillea robusta* in Chongqing had the highest PM_{2.5} capturing capability. However, *G. biloba*, *Cinnamomum japonicum*, and *M. soulangeana* shows the lowest PM_{2.5} capture capability. Captured PM_{2.5} of *G. biloba* is merely 10 % of *C. lanceolata*. Others range from 1.5 to 2.5 mg m⁻². The results in Beijing indicate that the most efficient species are *B. papyrifera* and *Sophora japonica*. Besides, PM_{2.5} captured by conifer is lower than the actual, which can be explained by the fact that we ignored the wax layer and sticky secretions (Table 3).

For the captured PM_{2.5} per tree, *C. lanceolata* captures the largest PM_{2.5}. *G. robusta*, *P. massoniana*, and *Litsea elongate* are efficient in Chongqing. *B. papyrifera* is the most inefficient species due to the lower leaf area. Others range from 14.00 to 123.00 mg per tree. In Beijing, *P. tomentosa* shows the highest PM_{2.5} capture capability, while *P. massoniana*, *B. papyrifera*, and *P. armandii* are the intermediate ones among the 25 tree species. *G. biloba*, *P. orientalis*, and *M. soulangeana* belong to the lowest species. *B. papyrifera* and *P. massoniana* have comparatively high PM_{2.5} capture

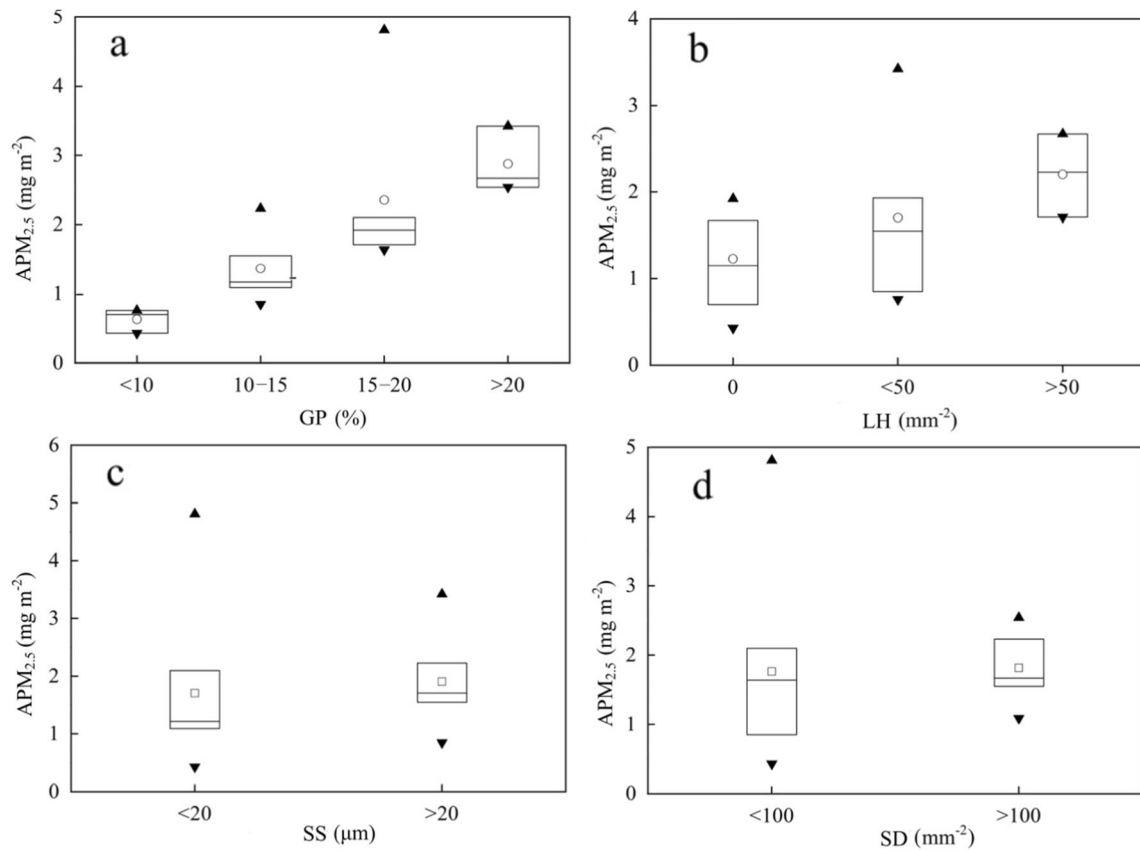


Fig. 5 $APM_{2.5}$ at different classified level (The central rectangle spans the first quartile to the third quartile and the segment inside the rectangle shows the median, while the small squares represent the average. The

triangle above and below or overlapping the dash show the maximum and minimum value)

capability. However, the same species in Beijing capture more $PM_{2.5}$ than those in Chongqing.

All the leaf characteristics data were normalized using SPSS (vision 19.0) to obtain dimensionless data including captured $PM_{2.5}$ per leaf area (ZM), groove proportion (ZGP), leaf hairs (ZLH), stomata size (ZSS), and stomatal density (ZSD). Results found that there were significantly positive correlation between ZM and ZGP, ZSS ($p < 0.01$). A significant correlation between ZM, ZLH, and ZSD were not found ($p > 0.05$).

Discussion

The $PM_{2.5}$ capture capability of 25 species in Beijing and Chongqing were tested by a chamber device. We obtained $PM_{2.5}$ capture capability per unit leaf area and per tree, which can be helpful for selecting proper vegetation in urban settings. We tested the same species in Chongqing and Beijing at the same environment (same pollution level, temperature, and humidity). Surprisingly, there was a difference between the two sites. It can be seen that the $APM_{2.5}$ in Beijing were larger, possibly due to the rich leaf morphology.

Leaf features of coniferous species can cause high air turbulence inside the tree crowns, leading to an increase in the interception capacity of contaminants (Bunzl et al. 1989). In this study, conifers did not show a significant advantage to capture $APM_{2.5}$ compared with broadleaf species. However, $PM_{2.5}$ accumulation capacity of conifers was superior to most broadleaf species for larger leaf areas per tree.

Leaf morphology appears to be a dominant factor in particle deposition (Mitchell et al. 2010). In previous studies, leaf morphology was qualitatively analyzed, while few quantified results were made (Chai et al. 2002). More detailed classifications and quantification of leaf morphology need to be further refined. In our study, groove proportions were quantified to evaluate the roughness. Meanwhile, leaf hair and stomatal density were quantified by counting them in a fixed leaf area. In addition, some studies revealed that particulate matter can get into leaves through the stomata, where fine particulates often crowded (Song et al. 2015; Lehnendorff et al. 2006). Therefore, stomata size was also quantified. Our main results reveal that grooves are the main parts of a blade that capture $PM_{2.5}$. A strong correlation between the $PM_{2.5}$ accumulation and groove proportion proves that leaf surface roughness is a facilitator for $PM_{2.5}$ capture (Fig. 6a). In addition, stomata size is an important influence factor for $PM_{2.5}$ capture capability.

Table 2 Statistics on leaf morphology

City	Type	Tree species	GP (%)	LH _a (mm ⁻²)	LH _b (mm ⁻²)	LH _t (mm ⁻²)	SD (mm ⁻²)	SS(μm)	
Chongqing	Broadleaf	<i>Platanus orientalis</i>	13.37 ± 1.87	0	2.33 ± 0.58	2.33 ± 0.58	37.21 ± 3.18	75.67 ± 7.59	
		<i>Cinnamomum japonicum</i>	2.73 ± 0.76	0	0	0	8.84 ± 0.74	12.33 ± 1.34	
		<i>Broussonetia papyrifera</i>	14.17 ± 2.08	20.33 ± 3.06	43.00 ± 8.54	63.33 ± 11.60	-	-	
		<i>Cinnamomum camphora</i>	11.19 ± 2.81	0	0	0	15.64 ± 1.12	132.67 ± 15.42	
		<i>Ginkgo biloba</i>	6.67 ± 1.51	0	0	0	17.24 ± 1.07	20.00 ± 3.98	
		<i>Ficus virens</i>	12.47 ± 2.36	0	0	0	17.54 ± 0.98	30.33 ± 3.85	
		<i>Ficus microcarpa</i>	13.81 ± 3.04	0	0	0	36.49 ± 2.89	138.67 ± 14.77	
		<i>Erythrina variegata</i>	17.01 ± 3.41	0	0	0	20.07 ± 1.41	50.24 ± 3.47	
		<i>Grevillea robusta</i>	23.66 ± 3.79	6.33 ± 1.52	12.67 ± 1.53	19.00 ± 3.05	22.54 ± 2.57	47.27 ± 3.18	
		<i>Symplocos setchuensis</i>	13.77 ± 1.27	0	21.33 ± 6.51	21.33 ± 6.51	21.45 ± 2.87	112.84 ± 11.82	
		<i>Litsea elongata</i>	21.05 ± 2.14	6.66 ± 0.58	44.00 ± 6.56	60.66 ± 7.14	17.34 ± 1.29	54.33 ± 9.54	
		<i>Magnolia soulangeana</i>	3.86 ± 0.85	0	2.00 ± 1.00	2.00 ± 1.00	16.34 ± 1.61	98.67 ± 9.24	
		<i>Koelreuteria bipinnat</i>	25.89 ± 2.10	7.00 ± 1.00	6.33 ± 1.15	13.33 ± 2.15	10.78 ± 0.75	192.47 ± 17.44	
		Coniferous	<i>Cunninghamia lanceolata</i>	15.18 ± 1.87	0	0	0	14.21 ± 0.85	87.33 ± 6.87
<i>Pinus massoniana</i>	16.18 ± 2.54		0	0	0	13.47 ± 1.98	32.33 ± 5.24		
Beijing	Broadleaf	<i>Broussonetia papyrifera</i>	19.25 ± 1.59	25.21 ± 2.30	46.20 ± 6.98	71.41 ± 9.28	-	-	
		<i>Ginkgo biloba</i>	9.23 ± 1.23	0	0	0	18.52 ± 1.07	20.00 ± 3.98	
		<i>Platanus orientalis</i>	16.25 ± 2.05	0	2.58 ± 0.62	2.58 ± 0.62	38.36 ± 3.02	80.12 ± 6.26	
		<i>Magnolia soulangeana</i>	4.03 ± 1.15	0	2.02 ± 0.96	2.02 ± 0.96	18.74 ± 1.61	100.36 ± 10.23	
		<i>Populus tomentosa</i>	15.64 ± 1.83	7.86 ± 1.85	39.33 ± 7.56	47.19 ± 9.41	20.11 ± 2.07	81.53 ± 8.49	
		<i>Fraxinus pennsylvanica</i>	15.98 ± 1.96	0	8.67 ± 1.82	8.67 ± 1.82	16.93 ± 1.76	67.87 ± 6.74	
		<i>Sophora japonica</i>	12.11 ± 1.08	0	0	0	15.87 ± 1.69	76.84 ± 9.08	
		Coniferous	<i>Platycladus orientalis</i>	13.28 ± 1.72	0	0	0	10.36 ± 1.85	41.17 ± 3.48
			<i>Pinus armandii</i> Franch.	16.57 ± 1.88	0	0	0	12.74 ± 2.14	35.17 ± 4.72
			<i>Pinus massoniana</i>	18.23 ± 2.20	0	0	0	14.47 ± 1.56	34.26 ± 6.59

Note: the bold are the common species in Chongqing and Beijing. GP represents groove proportion, LH_a, LH_b, and LH_t represents leaf hair in front, leaf hair on back, and total leaf hair, respectively

SD represents stomatal density, SS represents stomatal size

In this research, NaCl was used as a PM_{2.5} source, thus the mass of NaCl is lower than the natural PM_{2.5} source. The mass of captured PM_{2.5} per tree in our study was lower than the results in Song et al. (2015). Overall, the method used in this study is suitable for comparing the difference between species qualitatively merely.

Leaf characteristic and leaf morphology

Though all sampled species can capture PM_{2.5} and leaf surfaces have a considerable capacity (Wang et al. 2015), the amount differ significantly depending on leaf morphology. *B. papyrifera* is the most hairy for both lower and upper sides of the leaf and has the high groove proportion. The stomata size and stomatal density of *B. papyrifera* are not counted because leaf hair covered the stoma on leaf surface. *Koelreuteria bipinnat* has the highest groove proportion and stomata size, while the leaf hair and stomatal density of *K. bipinnat* are low. All of them do not show the highest PM_{2.5} capture capability. *G. robusta* is the most efficient

broadleaf species and *C. lanceolata* is the most efficient conifer with high groove proportion and low stomata size. Species with high groove proportion and low stomata size is most effective at capturing PM_{2.5}. Earlier studies also reported that mounts of PM_{2.5} captured on rough tree leaves with low stomatal density were high (Hwang et al. 2011; Räsänen et al. 2013).

Nguyen et al. (2015) found that trees with leaf hairs have high PM_{2.5} capture capability. Species with densely haired leaves were most effective at capturing PM (Dzierzanowski et al., 2011; Weber et al. 2014). However, we found no significant correlation between PM_{2.5} capture capability and leaf hair (Fig. 6d). This may attribute to differed methodological approaches and limited tree species in this research. A large number of tree species need to be studied in the future.

The role of stoma activity in particle deposition is ambiguous. On one hand, transpiration of water through stomata cools the surface which is conducive to attracting PM_{2.5}; on the other hand, transpired water repels PM_{2.5} due to diffusio-phoresis (Hinds 1999). No

Table 3 Captured PM_{2.5} per unit leaf area and per tree and the total leaf area per tree of 25 species

City	Type	Tree species	Abbreviation	APM _{2.5} (mg m ⁻²)	Total leaf area (m ²)	Captured PM _{2.5} per tree (mg)	
Chongqing	Broadleaf	<i>Platanus orientalis</i>	PO	0.81	21.43	17.3583	
		<i>Cinnamomum japonicum</i>	CJ	0.72	41.43	29.8296	
		<i>Broussonetia papyrifera</i>	BP	2.15	54.37	116.8955	
		<i>Cinnamomum camphora</i>	CC	1.03	59.83	61.6249	
		<i>Ginkgo biloba</i>	GB	0.45	31.53	14.1885	
		<i>Ficus virens</i>	FS	1.25	60.45	75.5625	
		<i>Ficus microcarpa</i>	FM	1.53	68.13	104.2389	
		<i>Erythrina variegata</i>	EV	1.88	64.43	121.1284	
		<i>Grevillea robusta</i>	GR	3.28	52.22	171.2816	
		<i>Symplocos setchuensis</i>	SS	1.96	33.67	65.9932	
		<i>Liisea elongata</i>	LE	2.63	51.67	135.8921	
		<i>Magnolia soulangeana</i>	MS	0.72	63.42	45.6624	
		<i>Koelreuteria bipinnat</i>	KB	2.52	45.62	114.9624	
		Coniferous	<i>Cunninghamia lanceolata</i>	CL	4.72	102.56	484.0832
			<i>Pinus massoniana</i>	PM	2.02	76.96	155.4592
Beijing	Broadleaf	<i>Broussonetia papyrifera</i>	BP	2.35	54.37	127.7695	
		<i>Ginkgo biloba</i>	GB	0.53	31.53	16.7109	
		<i>Platanus orientalis</i>	PO	0.83	21.43	17.7869	
		<i>Magnolia soulangeana</i>	MS	0.77	63.42	48.8334	
		<i>Populus tomentosa</i>	PT	1.87	91.14	170.4318	
		<i>Fraxinus pennsylvanica</i>	FP	1.07	87.47	93.5929	
		<i>Sophora japonica</i>	SJ	2.12	48.47	102.7564	
		Coniferous	<i>Platyclusus orientalis</i>	PLO	1.24	36.82	45.6568
			<i>Pinus armandii</i>	PA	1.7	73.65	125.205
			<i>Pinus massoniana</i>	PM	2	76.96	153.92

Note: The bold are the common species in Chongqing and Beijing. APM_{2.5} represents captured PM_{2.5} per unit leaf area

statistically significant correlations are found between PM_{2.5} capture capability and stomata size (Fig. 6b), stomatal density (Fig. 6c) in Chongqing and Beijing. For the stomata size, significant correlation with PM_{2.5} accumulation exists when tree species are classified into two groups according to stoma size:(1) The bigger one: PO, MS, CC, FM, KB, SS, PT, FP, which average stomata size are 111.19 μm. (2) The smaller one: CJ, BP, GB, FS, GR, LE, CL, PM, PA, EV, SJ, PLO, which average stomata size are 44.41 μm (Fig. 7). It can be seen that the correlation of the smaller one is higher than the bigger one, which can be explained by the restrain effect due to small stomata size. When the stomata size grow, the restrain effect become smaller.

Difference between coniferous and broadleaf species

Conifers shows the highest particle capture efficiency of tested tree species, which coincides with previous studies. Among the conifers, pines captured significantly more PM_{2.5} than cypresses (Beckett et al., 2000a, b). In this study,

C. lanceolata is the most effective species in PM_{2.5} accumulation. Nevertheless, *P. orientalis* belongs to cypresses and has the least efficiency of PM_{2.5} accumulation, which coincides with the results of Song et al. (2015). It may be due to that pine trees deposited more PM_{2.5} than cypress ones.

More complex structure of the foliage of the conifers explained their greater effectiveness at capturing particles (Beckett et al., 2000a, b). However, in this study, conifers did not show a significant advantage to capture APM_{2.5} comparing with broadleaf species (Fig. 8a), which may attribute to that the structure of the conifer crowns were not considered. The total leaf area per tree of the conifer is higher than broadleaf species. Therefore, PM_{2.5} accumulation capacity per tree of conifers are superior to most of broadleaf species (Fig. 8b).

In addition, some trees are better able to survive in smoky and polluted conditions due to differences in physiological mechanisms of varied species. All in all, the best choices for pollution-control plantings are coniferous and broadleaved species with rough leaf surfaces and high adaptability (Beckett et al. 1998, 2000a, b; Silli et al. 2015).

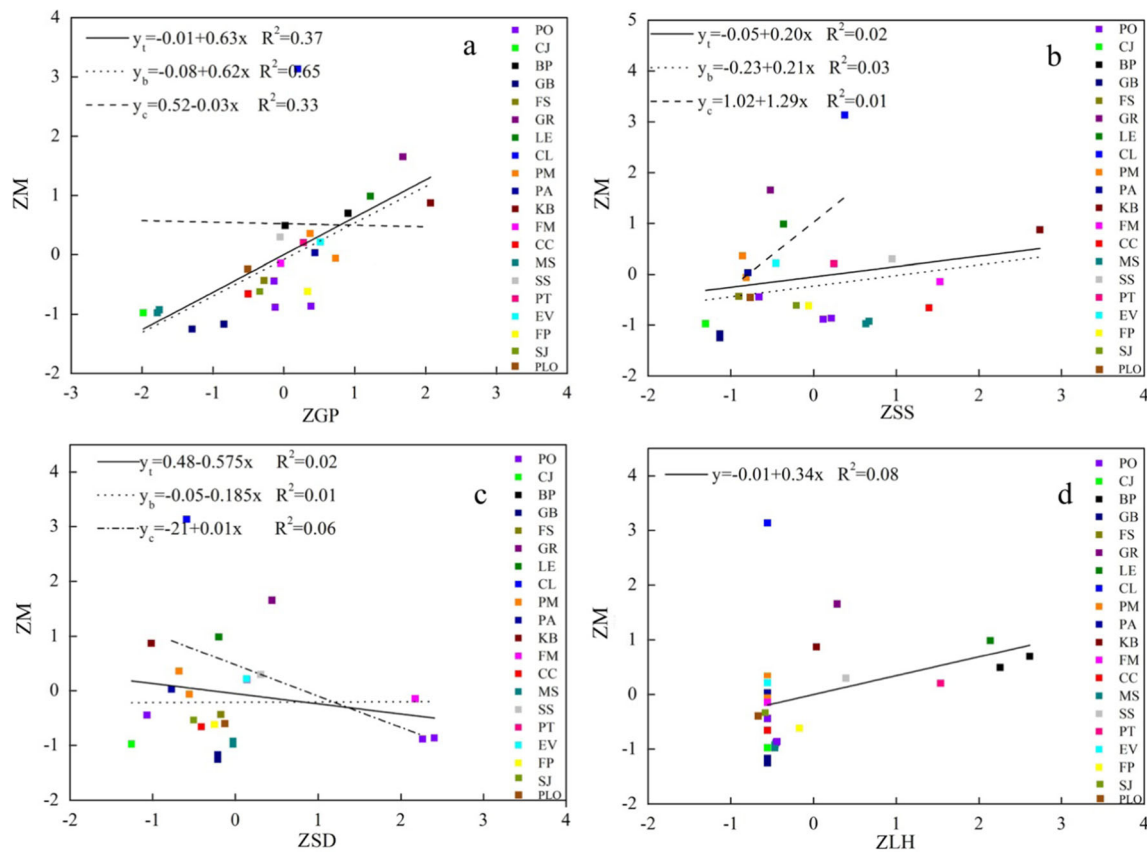


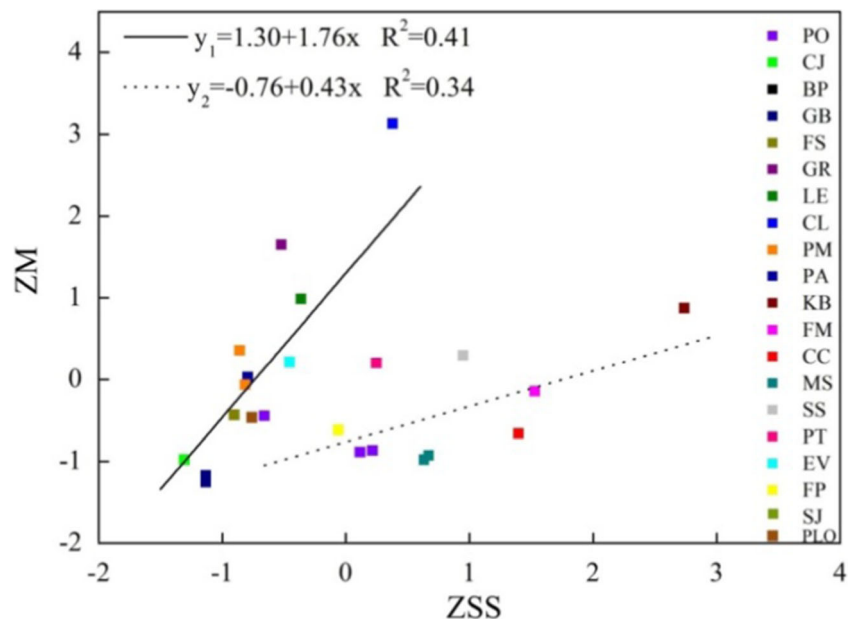
Fig. 6 Correlation analysis of normalized leaf morphology and captured PM_{2.5} per unit leaf area (y_b represents the species in Beijing; y_c represents the species in Chongqing; y_t represents the species in both Chongqing and Beijing. Each colored small square represents a tree species)

Difference between two sites

A number of studies have demonstrated the effects of pollution on tree leaves. Deposition of PM was responsible for the change on leaf surface morphology (Gupta et al. 2015).

Furthermore, it was found that the effects of PM_{2.5} on leaves relate to their acidity, salinity, and trace metal content properties (Grantz et al. 2003). Leaf density and thickness are altered when exposed to pollution environment and higher levels of NO_x (Jochner et al. 2015). Pääkkönen et al. (1997) found that

Fig. 7 Correlation analysis of normalized stomata size and captured PM_{2.5} per unit leaf area (y₁: CJ, BP, GB, FS, GR, LE, CL, PM, PA, EV, SJ, PLO; y₂: PO, MS, CC, FM, KB, SS, PT, FP)



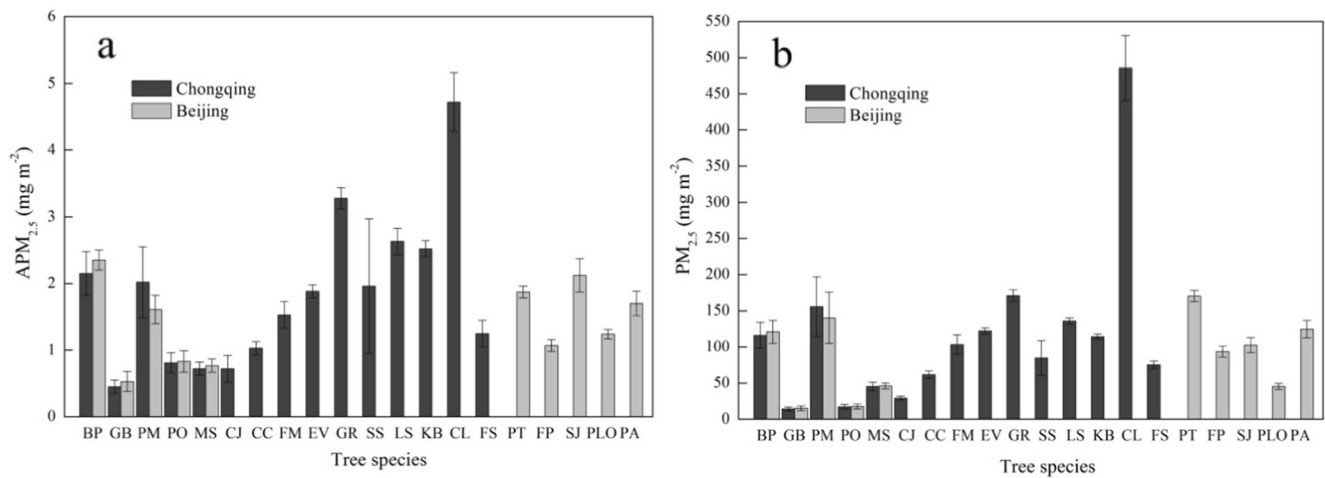


Fig. 8 Captured PM_{2.5} of different species in Beijing and Chongqing

higher stomatal density and thicker leaves result in a greater tolerance to pollution. In addition, it was likely that PM_{2.5} might have an indirect effect via altering soil chemistry, which is also believed to be the major effect of PM on trees (Grantz et al. 2003). Trees strengthened the characteristics of their leaf structures under polluted conditions, which are regarded as adaptive and compensative to the adverse effects of air pollution (Chaturvedi et al. 2013). Studies also showed that trees develop different morphologies under polluted conditions (Karenlampi 1986; Veselkin 2004).

In addition, the chemical composition and wax structure may also be different in Beijing and Chongqing, which are significant for PM_{2.5} capture (Burkhardt 2010). Therefore, it is worthy of further study regarding the effect of PM_{2.5} pollutions on leaf morphology, including chemical composition, wax structure, groove proportion, leaf hair, stomatal density, and stomata size.

Summary and conclusion

This study revealed that broadleaf species with rich leaf morphology, namely, leaf groove, leaf hair and stomata, can capture more PM_{2.5} per leaf area than coniferous. However, coniferous captured larger PM_{2.5} per tree due to their large leaf area per tree. Among coniferous, *C. lanceolata*, *P. orientalis*, *P. armandii* were most efficient in capturing PM_{2.5}. *G. robusta*, *Erythrina variegata*, *K. bipinnata*, *P. tomentosa*, *F. pennsylvanica* showed relatively high PM_{2.5} accumulations. A difference exists between the trees in Beijing and Chongqing due to the environment and leaf characteristic difference. Groove proportion and stoma size positively relate to PM_{2.5} accumulations, while there is no significant correlation between PM_{2.5} capture and stomatal density and leaf hair. Efficiency of PM_{2.5} capture capability in this study was examined by gas chamber, which is worthy of further analysis in

field conditions. Thus, climate conditions, urban planning and management, and advantage tree species should be considered when greening. Urban greening trees are diverse and the structures are complicated. Complex ecological environment may lead to different physiological characteristics. Hence, it is valuable to examine the PM_{2.5} accumulation capability in specific ecological environment and different growth stages of trees. In addition, physiological indicators such as leaf photosynthetic rate, transpiration rate and stomatal conductance should be considered.

Acknowledgments The research is supported by Forestry Public Welfare Project of China (Grant No. 201304301), Fundamental Research Funds for the Central Universities (Grant Nos. 201304301 BLX2014-12, 2015ZCQ-SB-01, and 2016ZCQ06).

Open Access This article is distributed under the terms of the Creative Commons Attribution 4.0 International License (<http://creativecommons.org/licenses/by/4.0/>), which permits unrestricted use, distribution, and reproduction in any medium, provided you give appropriate credit to the original author(s) and the source, provide a link to the Creative Commons license, and indicate if changes were made.

References

Beckett KP, Freer-Smith PH, Taylor G (1998) Urban woodlands: their role in reducing the effects of particulate pollution. *Environ Pollut* 99:347–360

Beckett KP, Freer Smith PH, Taylor G (2000a) Particulate pollution capture by urban trees: effect of species and wind speed. *Glob Chang Biol* 6:995–1003

Beckett KP, Freer Smith PH, Taylor G (2000b) Effective tree species for local air quality management. *J Arboric* 26:12–19

Bunzl K, Schimmack W, Kreutzer K, Schierl R (1989) Interception and retention of Chemobyl-derived 134 Cs, 137 Cs and 106 Ru in a spruce stand. *Sci Total Environ* 78:77–87

Burkhardt J (2010) Hygroscopic particles on leaves: nutrients or desiccants? *Ecol Monogr* 80:369–399

Chai YX, Zhu N, Han HJ (2002) Dust removal effect of urban tree species in Harbin. *J Appl Eco* 113:1121–1126

- Chaturvedi RK, Prasad S, Rana S, Obaidullah SM, Pandey V, Singh H (2013) Effect of dust load on the leaf attributes of the tree species growing along the roadside. *Environ Monit Assess* 185:383–391
- Chen X, Zhou Z, Teng M, Wang P, Zhou L (2015) Accumulation of three different sizes of particulate matter on plant leaf surfaces: effect on leaf traits. *Arch Biol Sci* 00:102–102
- Dzierżanowski K, Popek R, Gawrońska H, Sæbø A, Gawroński SW (2011) Deposition of particulate matter of different size fractions on leaf surfaces and in waxes of urban forest species. *Int J Phytoremediat* 13(10):1037–1046
- Fowler D, Skiba U, Nemitz E, Choubedar F, Branford D, Donovan R, Rowland P (2004) Measuring aerosol and heavy metal deposition on urban woodland and grass using inventories of ²¹⁰Pb and metal concentrations in soil. *Water Air Soil Pollut* 4:483–499
- Freer-Smith PH, El-Khatib AA, Taylor G (2004) Capture of particulate pollution by trees: a comparison of species typical of semi-arid areas (*Ficus nitida* and *Eucalyptus globulus*) with European and North American species. *Water Air Soil Pollut* 155:173–187
- Fu J, Jiang D, Lin G, Liu K, Wang Q (2015) An ecological analysis of PM_{2.5} concentrations and lung cancer mortality rates in China. *BMJ Open* 5:e009452
- Grantz DA, Garner JHB, Johnson DW (2003) Ecological effects of particulate matter. *Environ Int* 29:213–239
- Gromke C, Ruck B (2012) Pollutant concentrations in street canyons of different aspect ratio with avenues of trees for various wind directions. *Bound-lay meteorol* 114:41–64
- Guo S, Hu M, Zamora ML, Peng J, Shang D, Zheng J, Molina MJ (2014) Elucidating severe urban haze formation in China. *Proc Natl Acad Sci* 111:17373–17378
- Guo Y, Zeng H, Zheng R, Li S, Barnett AG, Zhang S, Williams G (2016) The association between lung cancer incidence and ambient air pollution in China: a spatiotemporal analysis. *Environ Res* 144:60–65
- Gupta GP, Kumar B, Singh S, Kulshrestha UC (2015) Urban climate and its effect on biochemical and morphological characteristics of Arjun (*Terminalia arjuna*) plant in National Capital Region Delhi. *Chem Eco* 131:524–538
- Hinds WC (1999) *Aerosol technology: properties, behavior, and measurement of airborne particles*. Wiley, New York
- Hwang HJ, Yook SJ, Ahn KH (2011) Experimental investigation of sub-micron and ultrafine soot particle removal by tree leaves. *Atmos Environ* 45:6987–6994
- Jochner S, Markevych I, Beck I, Traidl-Hoffmann C, Heinrich J, Menzel A (2015) The effects of short- and long-term air pollutants on plant phenology and leaf characteristics. *Environ Pollut* 206:382–389
- Kärenlampi L (1986) Relationships between macroscopic symptoms of injury and cell structural changes in needles of ponderosa pine exposed to air pollution in California. *Ann Bot Fenn* 23:255–264
- Lehndorff E, Ubat M, Schwark L (2006) Accumulation histories of magnetic particles on pine needles as function of air quality. *Atmos Environ* 40:7082–7096
- Li J, Zhou P, Zhao L (2001) Influence of drought stress on transpiring water-consumption of seedlings. *Acta Ecol Sin* 22:1380–1386
- Mitchell R, Maher BA, Kinnersley R (2010) Rates of particulate pollution deposition onto leaf surfaces: temporal and inter-species magnetic analyses. *Environ Pollut* 158:1472–1478
- Mori J, Hanslin HM, Burchi G, Sæbø A (2015) Particulate matter and element accumulation on coniferous trees at different distances from a highway. *Urban For Urban Gree* 14:170–177
- Nguyen T, Yu X, Zhang Z, Liu M, Liu X (2015) Relationship between types of urban forest and PM_{2.5} capture at three growth stages of leaves. *J Environ Sci-China* 27:33–41
- Nowak DJ, Hirabayashi S, Bodine A, Hoehn R (2013) Modeled PM_{2.5} removal by trees in ten US cities and associated health effects. *Environ Pollut* 78:395–402
- Pääkkönen E, Holopainen T, Kärenlampi L (1997) Variation in ozone sensitivity among clones of *Betula pendula* and *Betula pubescens*. *Environ Pollut* 95:37–44
- Popek R, Gawrońska H, Wrochna M, Gawroński SW, Sæbø A (2013) Particulate matter on foliage of 13 woody species: deposition on surfaces and phytostabilisation in waxes—a 3-year study. *Int J Phytoremediat* 15:245–256
- Popek R, Gawrońska H, Gawroński SW (2015) The level of particulate matter on foliage depends on the distance from the source of emission. *Int J Phytoremediat* 17:1262–1268
- Pullman MR (2009) *Conifer PM_{2.5} deposition and re-suspension in wind and rain events*. Cornell University
- Räsänen JV, Holopainen T, Joutsensaari J, Ndam C, Pasanen P, Rinna A, Kivimäenpää M (2013) Effects of species-specific leaf characteristics and reduced water availability on fine particle capture efficiency of trees. *Environ Pollut* 183:64–70
- Sæbø A, Popek R, Nawrot B, Hanslin HM, Gawronska H, Gawronski SW (2012) Plant species differences in particulate matter accumulation on leaf surfaces. *Sci Total Environ* 427:347–354
- Shu Y, Zhu L, Yuan F, Kong X, Huang T, Cai YD (2015) Analysis of the relationship between PM_{2.5} and lung cancer based on protein-protein interactions. *Comb Chem high T Scr* 19:1–9
- Silli V, Salvatori E, Manes F (2015) Removal of airborne particulate matter by vegetation in an urban park in the city of Rome (Italy): an ecosystem services perspective. *Annali di Botanica* 5:53–62
- Song Y, Maher BA, Li F, Wang X, Sun X, Zhang H (2015) Particulate matter deposited on leaf of five evergreen species in Beijing, China: source identification and size distribution. *Atmos Environ* 105:53–60
- Speak AF, Rothwell JJ, Lindley SJ, Smith CL (2012) Urban particulate pollution reduction by four species of green roof vegetation in a UK city. *Atmos Environ* 61:283–293
- Veselkin D (2004) Anatomical structure of Ectomycorrhiza in Ledeb. And Ledeb. Under conditions of Forest ecosystems polluted with emissions from copper-smelting works. *Russ J Ecol* 2:71–78
- Wang L, Gong H, Liao W, Wang Z (2015) Accumulation of particles on the surface of leaves during leaf expansion. *Sci Total Environ* 532:420–434
- Weber F, Kowarik I, Säumel I (2014) Herbaceous plants as filters: immobilization of particulates along urban street corridors. *Environ Pollut* 186:234–240
- Yanglili (2011) *Research on the Related indicators of Green Quantity for 8 kinds of Landscape Plants*. Southwest university
- Zheng S, Pozzer A, Cao CX, Lelieveld J (2015) Long-term (2001–2012) concentrations of fine particulate matter (PM_{2.5}) and the impact on human health in Beijing, China. *Atmos Chem Phys* 15:5715–5725