

ERRATUM

## Erratum: Water availability and land subsidence in the Central Valley, California, USA

Claudia C. Faunt<sup>1</sup> · Michelle Sneed<sup>2</sup> · Jon Traum<sup>2</sup> · Justin T. Brandt<sup>2</sup>

Published online: 14 August 2017  
© Springer-Verlag GmbH Germany 2017

### Erratum to: Hydrogeol J (2016) 24:675–684 DOI 10.1007/s10040-015-1339-x

The subsidence contours shown in the original Fig. 5 are incorrect and have been revised. The corrected Fig. 5 is presented here.

Associated revisions in the text include:

Page 679, column 2, paragraph 1. Replace sentence with: One area is centered near the town of El Nido (1,500 km<sup>2</sup>) and the other near the town of Pixley (6,000 km<sup>2</sup>; Fig. 5).

Page 681, column 1, paragraph 2. Replace sentences with: More than 150 mm of subsidence occurred over a large part of the southern subsiding area during 2008–2010 (Fig. 5). In some places more than 500 mm of subsidence occurred during this period. The maximum rate of recent subsidence (250 mm/year) is substantially higher than the maximum rate that occurred historically in that area.

---

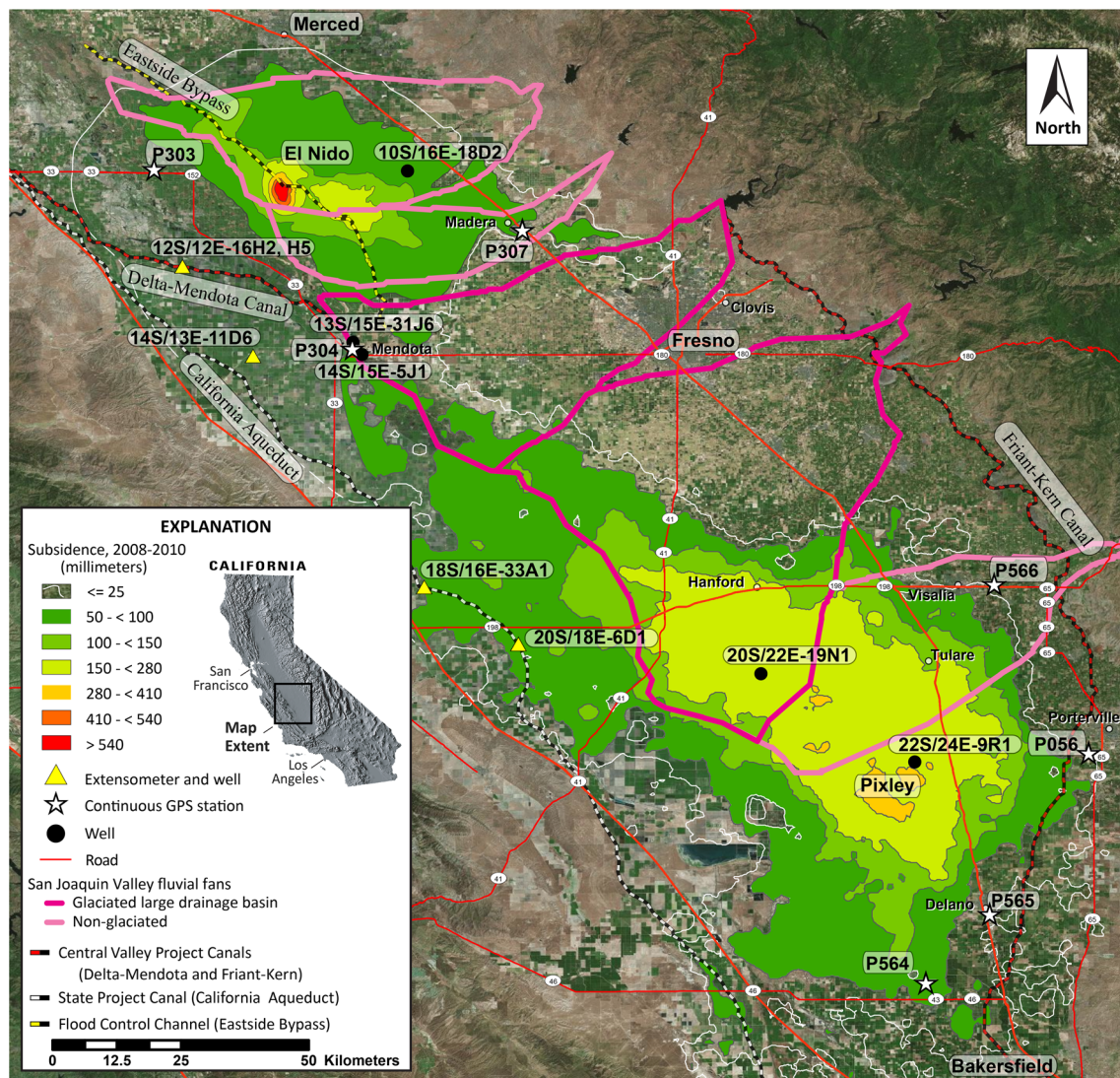
The online version of the original article can be found at <http://dx.doi.org/10.1007/s10040-015-1339-x>

---

✉ Claudia C. Faunt  
ccfaunt@usgs.gov

<sup>1</sup> U.S. Geological Survey, California Water Science Center, San Diego Projects Office, 4165 Spruance Road, Suite 200, San Diego, CA 92024, USA

<sup>2</sup> U.S. Geological Survey, California Water Science Center, 6000 J Street, Placer Hall, Sacramento, CA 95819, USA



**Fig. 5** Map showing estimated regions of subsidence derived from interferograms for 2008–2010, glaciated and non-glaciated fluvial fans, locations of extensometers, continuous GPS stations, and selected surface-water conveyance infrastructure