

MRI classification of interspinous ligament degeneration of the lumbar spine: intraobserver and interobserver reliability and the frequency of disagreement

Gun Keorochana · Cyrus E. Taghavi · Shiau-Tzu Tzeng · Kwang-Bok Lee · Jen-Chung Liao · Jeong Hyun Yoo · Jeffrey C. Wang

Received: 27 May 2009 / Revised: 24 November 2009 / Accepted: 24 January 2010 / Published online: 21 February 2010
© The Author(s) 2010. This article is published with open access at Springerlink.com

Abstract Posterior spinal ligament pathology is becoming increasingly recognized as a significant cause of low back pain. Despite the growing clinical importance of interspinous ligament degeneration in low back pain patients, formal reliability studies for the magnetic resonance imaging (MRI) evaluation of interspinous ligaments have not been performed. We proposed an MRI classification system for interspinous ligament degeneration and conducted a comprehensive reliability and reproducibility assessment. Fifty patients who had low back pain with or without leg discomfort (26 males and 24 females) with a mean age of 48.8 years (range 23–85 years) were studied. The classification for lumbar interspinous ligament degeneration was developed on the basis of the literature using mid-sagittal T1- and T2-weighted images. Three spine surgeons independently graded a total of 200 interspinous ligament levels. Intraobserver and interobserver reliability were assessed by kappa statistics. The frequency of disagreement was also identified. The intraobserver agreement was excellent in all readers (kappa range 0.840–0.901). The interobserver agreement was lower as

expected, and was substantial to excellent (kappa range 0.726–0.818). Overall complete agreement was obtained in 87.8% of all interspinous ligament levels. A difference of 1, 2, and 3 grades occurred in 8.1, 3.0, and 1.1% of readings, respectively. This proposed MRI classification of interspinous ligament degeneration was simple, reliable, and reproducible. Its use as a standardized nomenclature in clinical and radiographic research may be recommended.

Keywords Lumbar spine · Degeneration · Interspinous ligament · Classification · Magnetic resonance imaging · Reliability

Introduction

Degenerative change of the lumbar spine is a major source of low back pain and disability in older age people [1]. The processes of degeneration are complex and involve deterioration of both the anterior and posterior spinal column. Kirkaldy-Willis [2] categorized the degenerative cascade into three phases: dysfunction, instability, and restabilization. They identified the correlation of pathological changes within the disk and facet joints. Recently, degeneration of the posterior spinal ligament has been considered to be one of the causes of low back pain [3, 4] prompting numerous studies to further evaluate the role of the interspinous ligament. These studies include an investigation of its mechanical role in spinal stability using biomechanical testing [5, 6], and anatomical, biochemical, and pathological changes in the degenerative aging spine [6, 7].

Magnetic resonance imaging (MRI) has emerged as the diagnostic method of choice for studying spinal degenerative pathology [8]. Since MRI provides excellent soft tissue evaluation and multiplanar capabilities, the assessment of

G. Keorochana
Department of Orthopaedics, Ramathibodi Hospital,
Mahidol University, Bangkok 10400, Thailand

G. Keorochana · C. E. Taghavi · S.-T. Tzeng · K.-B. Lee ·
J.-C. Liao · J. H. Yoo · J. C. Wang
Department of Orthopaedic Surgery,
University of California at Los Angeles,
Los Angeles, CA 90095, USA

J. C. Wang (✉)
Orthopaedic Spine Service, UCLA Comprehensive Spine
Center, 1250 16th Street, Suite 745,
Santa Monica, CA 90404, USA
e-mail: jwang@mednet.ucla.edu

Table 1 Classification of interspinous ligament degeneration

Grade	Characteristics
A	Low or iso-signal intensity on T1- and T2-weighted images or mixed signal intensity
B	High signal intensity on T1-weighted images and high signal intensity on T2-weighted images
C	Low signal intensity on T1-weighted images and high signal intensity on T2-weighted images
D	Low or iso-signal intensity on T1- and T2-weighted images with hypertrophy or marrow alteration within spinous processes or narrowing of interspinous ligament interval

midline structures, such as spinous processes, and supra-spinous, and interspinous ligaments, can be clearly viewed using mid-sagittal imaging [9]. MRI characteristics of interspinous ligament degeneration have been considered in previous studies [9, 10]. Although the clinical importance of the interspinous ligaments has been revealed, reproducibility studies of MRI evaluation of interspinous ligaments have not been performed. A standardized nomenclature is required for the comparison of data from different investigations [11]. Additionally, the reliability of the assessment tool has a critical influence on the validity of acquired data.

In this study, we propose a simple classification system for degenerative changes of the lumbar interspinous ligament as seen with MRI. The reliability of this system was evaluated by examining both intra- and interobserver reproducibility.

Materials and methods

Participants

In this prospective consecutive data collection, 118 positional MRI scans of the lumbar spine were collected from July to December 2007. All patients were referred for lumbar MRI in the evaluation of symptoms of back and/or leg pain. MRI scans of 50 patients (26 males and 24 females) were randomly selected. The mean age was 48.8 years (range 23–85 years) and mean body weight was 183.93 (range 115–240 lb). None of the patients had previously undergone lumbar spine surgery. The Institutional Review Board approved this study and informed consent was obtained from all participants. Four lumbar spinal levels (L2–3, L3–4, L4–5, L5–S1) were used and a total of 200 interspinous ligament levels were evaluated on T1- and T2-weighted mid-sagittal images.

Grading system for interspinous ligament degeneration

MR classification for interspinous ligament degeneration was developed on the basis of a comprehensive literature review of previously published studies examining anatomical, radiological, and histological aspects [3, 4, 9, 10, 12]. We classified the degeneration into four grades

according to the signal intensities and characteristics of structural changes of interspinous ligament and surrounding tissues using mid-sagittal images of T1- and T2-weighted MR images (Table 1).

MRI technique

MRI of the lumbar spine was performed using a 0.6 Tesla MRI scanner (Upright Multi-Position MRI; Fonar Corp, Melville, New York). We examined the mid-sagittal T1-weighted spin echo images (repetitive time 671 ms, echo time 17 ms, thickness 4.0 mm, field of view 30 cm, matrix 256 × 224, NEX 2) and mid-sagittal T2-weighted fast spin echo images (repetition time 3,000 ms, echo time 140 ms, thickness 4.0 mm, field of view 30 cm, matrix 256 × 224, NEX 2) with a quad channel planar coil.

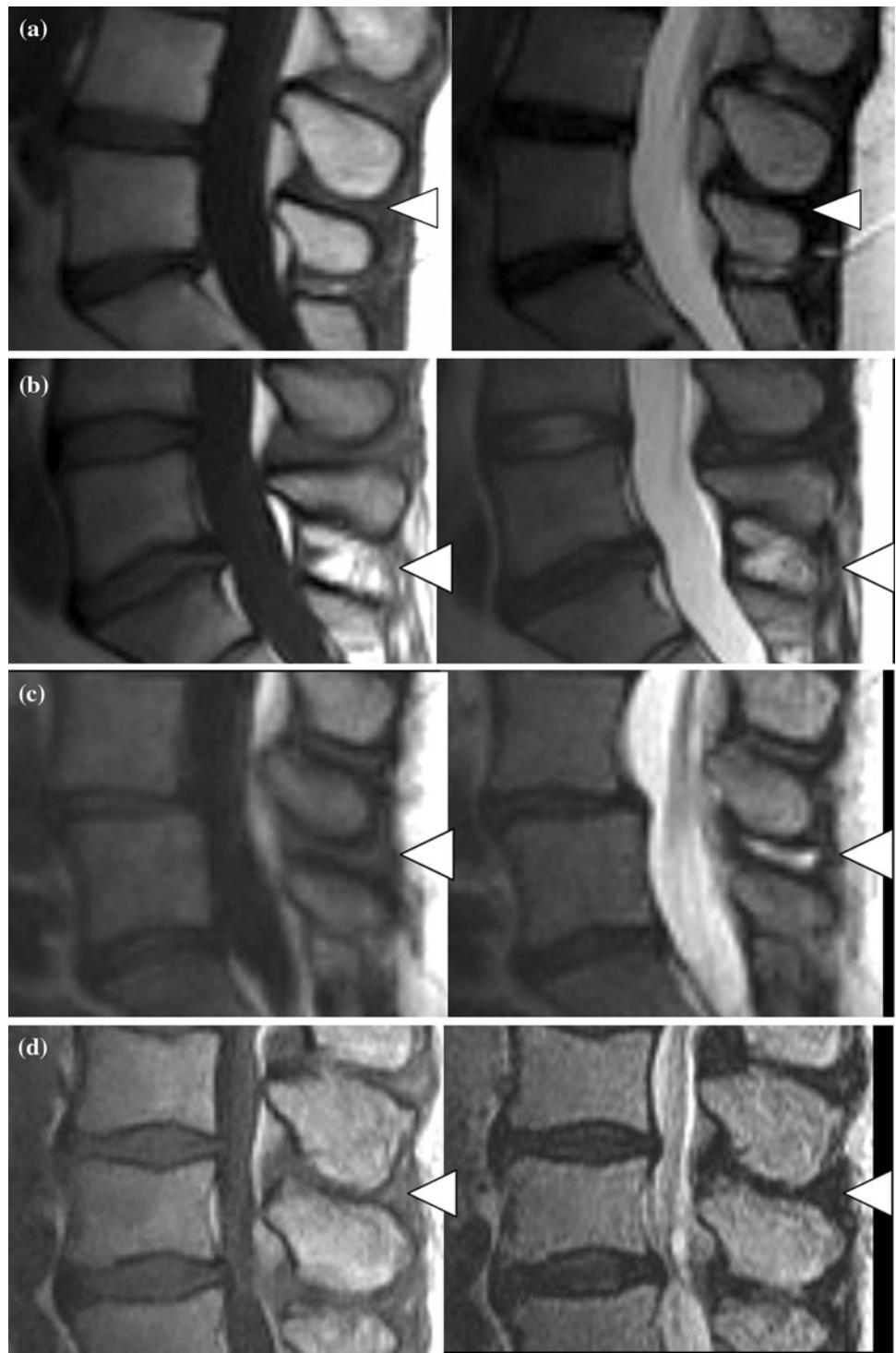
Image assessment

The lumbar spine MR images were assessed independently by three spine surgeons with 3, 7, and 9 years of experience with lumbar spine MRI. Each reader analyzed the images on separate occasions after the selected images were randomly reordered, with a minimum interval of 1 week. Instructions explaining the classification system and a set of sample images were given to all readers during the review (Fig. 1). All readers were instructed to precisely follow the classification algorithm.

Data analysis

The percentage of each grade assigned by each reviewer was determined. For ordinal level measurements, kappa statistics were appropriately used to evaluate the agreement percentage within readers (intraobserver agreement) and between readers (interobserver agreement) [13]. The interpretation of reliability coefficients suggested by Landis and Koch [14] was performed: kappa 0–0.2 indicated slight agreement, 0.21–0.4 fair agreement, 0.41–0.6 moderate agreement, 0.61–0.8 substantial agreement, and 0.81–1.0 excellent agreement. The frequency of disagreement was calculated for each grade. All statistical analyses were performed using SPSS (version 15, SPSS, Chicago, IL, USA).

Fig. 1 Example of each grade of interspinous ligament degeneration (*arrowhead*). **a** *Grade A* low- to iso-signal intensity on T1- and T2-weighted images. **b** *Grade B* high signal intensity on T1- and T2-weighted images. **c** *Grade C* low signal intensity on T1-weighted images and high signal intensity on T2-weighted images. **d** *Grade D* low or iso-signal intensity on T1- and T2-weighted images with marked narrowing of the interspinous interval



Results

A total of 200 interspinous levels were analyzed in this study. The overall grades of interspinous degeneration assessed by each reader are shown in Table 2.

Grade A was seen in 85–101 levels (42.5–50.5%), grade B in 76–92 (38–46%), grade C in 6–11 (3–5.5%), and grade D in 14–18 (7–9%), depending on the reader.

Intraobserver and Interobserver reliability

The results of intra- and interobserver reliability are summarized in Table 3. The intraobserver agreement was excellent for all readers, with kappa values ranging from 0.840 to 0.901. Complete agreement within readers ranged from 181 (90.5%) to 188 (94%) for the 200 levels. As expected, interobserver agreement was lower than

Table 2 Overall grading from three readers

Reader	Grades			
	A	B	C	D
a1	92 (46%)	85 (42.5%)	9 (4.5%)	14 (7%)
a2	97 (48.5%)	76 (38%)	11 (5.5%)	16 (8%)
b1	99 (49.5%)	78 (39%)	6 (3%)	17 (8.5%)
b2	101 (50.5%)	76 (38%)	6 (3%)	17 (8.5%)
c1	89 (44.5%)	86 (43%)	7 (3.5%)	18 (9%)
c2	85 (42.5%)	92 (46%)	7 (3.5%)	16 (8%)

Values are the number of levels (percentage) out of a total of 200 interspinous levels at each interpretation

Table 3 Kappa statistics of intraobserver and interobserver reliability

Intraobserver	Kappa values	Interobserver	Kappa values
a1–a2	0.860	a1–b1	0.733
b1–b2	0.840	a1–c1	0.818
c1–c2	0.901	b1–c1	0.809
		a2–b2	0.726
		a2–c2	0.746
		b2–c2	0.743

intraobserver agreement ranging from substantial to excellent, with kappa values from 0.726 to 0.818. Complete interobserver agreement was achieved in a range from 167 (83.5%) to 178 (89%) of all 200 levels.

Evaluation of disagreement

The overall intraobserver and interobserver agreement and disagreement are shown in Table 4. As expected, disagreement of 3 grades (between grades A and D) was less frequent than the difference between 1 or 2 grades in both intraobservation and interobservation. Also, disagreement of 2 grades was lower than disagreement of 1 grade. The relationship between different interspinous ligament degeneration grades and the frequency of disagreement are shown in Table 5. In the groups with a disagreement of 1 grade, a difference between grades A and B was much

more frequent than between grades B and C, and between grades C and D in both intraobservation and interobservation, and represented the highest rates of disagreement in the study. Regarding the frequency of disagreement in the groups of two grade difference, the percentage of difference between grades A and C was slightly higher than between grades B and D in both intraobservation and interobservation. Interestingly, disagreement was less frequent when the difference involved grade D (grades A and D, B and D, and C and D).

Discussion

Many classifications of degenerative change of the lumbar intervertebral disk and facet joint osteoarthritis have been proposed. Additionally, the reliability of these grading systems has been tested [15, 16]. Posterior spinal ligaments, especially the interspinous ligament, significantly contribute to the stability of the spine [5, 6]. Recent studies have shown that significant pain relief can be achieved after interspinous ligament injections, supporting its possible role in low back pain [17, 18]. Although research regarding interspinous ligament degeneration has been increasing, few studies have focused on the MRI characteristics of the interspinous ligament [3, 7, 10]. We have developed a classification system for interspinous ligament degeneration based on a modified version of that proposed by Fujiwara et al. [10] The modifications are based on a thorough radio-anatomic-histological literature review [3, 4, 9, 10, 12]. Our classification is based on the signal intensity of the interspinous ligament and specific characteristic changes within the ligaments using mid-sagittal T1- and T2-weighted MRI. In this study we focused on the reliability and reproducibility of this classification system and also the frequency of disagreement at each different grade.

The cascade of interspinous ligament degeneration has not been defined well. Prior studies have evaluated MRI findings in asymptomatic control subjects and non-pathologic cadaveric lumbar spines [7, 10], revealing low-signal intensity on both T1- and T2-weighted images to correspond with the earliest stages of degeneration. This

Table 4 Intraobserver and interobserver agreement and disagreement

Observer	Agreement	Disagreement		
		1 grade	2 grade	3 grade
Intraobserver (600 levels)	552 (92.0%)	32 (5.3%)	13 (2.2%)	3 (0.5%)
Interobserver (1,200 levels)	1,028 (85.7%)	114 (9.5%)	42 (3.5%)	16 (1.3%)
Overall intra- and interobserver (1,800 levels)	1,580 (87.8%)	146 (8.1%)	55 (3.0%)	19 (1.1%)

Values are the number of levels (percentage) out of the total number of interspinous levels at each interpretation

Table 5 The relation of different interspinous ligament degeneration grades and frequency of disagreement

Different grades	Intraobserver	Interobserver	Intra- and Interobserver
Disagreement in 1 grade			
Grade A and B	25 (4.1%)	95 (7.9%)	120 (6.7%)
Grade B and C	6 (1.0%)	16 (1.3%)	22 (1.2%)
Grade C and D	1 (0.2%)	3 (0.3%)	4 (0.2%)
Disagreement in 2 grade			
Grade A and C	9 (1.5%)	35 (2.9%)	44 (2.4%)
Grade B and D	4 (0.7%)	7 (0.6%)	11 (0.6%)
Disagreement in 3 grade			
Grade A and D	3 (0.5%)	16 (1.3%)	19 (1.1%)

Values are the number of levels (percentage) out of the total number of interspinous levels at each interpretation

correlates with grade A interspinous ligament degeneration in our study. Prior radiologic–pathologic investigations have shown the correlation of the changes in radiographic images of human interspinous ligaments and histological findings [9, 10, 12, 19]. Although the histological examination revealed various degenerative changes within the interspinous ligament, the dominant characteristics were identified in MR findings. Marked fatty replacement with a high signal intensity on both T1- and T2-weighted images (staged as grade B in our study) might represent fatty degeneration within the ligament. Low signal intensity on T1- and high signal intensity on T2-weighted images (staged as grade C in our study), were found to correlate with a dominant extensive proliferation of cells and vascular invasion. This signal intensity was controversially considered to be “interspinous bursitis” (Baastrup’s disease) with a pathological correlation of increased vascularity, eburnation, and formation of bursae [3, 12, 19]. The overlap of these pathological findings was suggested to represent this stage’s association with inflammation [3, 9, 10]. Massive fibrosis with chondrometaplasia was predominately observed as low-signal intensity on both T1- and T2-weighted images with hypertrophy of the spinous process. Progressive loss of interspinous space, hyperplasia, sclerosis, and marrow changes within spinous processes were also considered to reflect severe ligament degeneration (staged as grade D in our study) [9]. Our investigation did not have a pathologic correlation since it would be extremely difficult to obtain the pathologic specimens from the subjects. However, based on prior well-correlated radio-pathologic studies, it is likely that our MRI classification represented the interspinous ligament degeneration cascade.

The distribution of MRI characteristics of interspinous ligament degeneration has not been documented well. In our study, most interspinous ligament degeneration was

grade A or B. Fujiwara et al. also found that two-thirds of their study population presented with an interspinous ligament signal intensity similar to that of grades A and B in our study. The signal change in grade C mimics that considered to be interspinous bursitis. The prevalence of this condition has been described in previous MRI studies as 8.2%, which is comparable to the percentage of grade C in our study [3]. Grade D, which may represent the most severe stage of degeneration, was also identified in a small number in our population.

Using our proposed classification, we found intraobserver reliability to be excellent in all observers. Interobserver reliability was lower; however, the values remained within substantial to excellent agreement. There was no obvious difference in kappa values between the three readers who are all spine surgeons with different levels of clinical experience. The frequency of disagreement was relatively less when the difference involved grade D (grade A and D, B and D, C and D). This may be explained by greater difficulty discriminating signal intensity than with identifying interspinous interval narrowing or marrow or bony changes within the spinous processes. As expected, a difference of 1 grade occurred more often than a difference of 2 grades. Most of these differences were between grades A and B. This may be explained by a disproportionately high percentage of grades A and B, resulting in a more frequent misinterpretation between these grades. A second possible cause for this occurrence is the increased difficulty of distinguishing bright and intermediate signal intensities, which are characteristic of grade B and grade A, respectively. This indicates that this classification may require a higher resolution of imaging or objective measures of signal intensity.

There are a number of limitations for this type of study. First, we used 0.6 T MR imaging, which is not the dominant system in use today, and may provide low-resolution images. Nonetheless, we found sufficient agreement with these images. Second, we cannot definitively define the clinical correlation of this classification system. Since this is a retrospective analysis, we could not confirm the presence of ligamentous pain with diagnostic injections. The primary focus of our study was to determine the reliability of this classification system. Clinical-radiographic relationship investigations need a standardized and reproducible imaging classification in order to compare outcomes. Additional clinical studies may be conducted using our proposed classification system.

In conclusion, we have described a classification system for interspinous ligament degeneration using mid-sagittal T1- and T2-weighted MRI. We have tested this classification system and found it to provide sufficient reliability and reproducibility. We believe that this classification is easy to apply and comprehend and may be used as a

standardized nomenclature for clinical and radiographic investigations of interspinous ligament pathology.

Conflict of interest statement No disclosure of funding received for this work.

Open Access This article is distributed under the terms of the Creative Commons Attribution Noncommercial License which permits any noncommercial use, distribution, and reproduction in any medium, provided the original author(s) and source are credited.

References

1. Kelsey JL, White AA 3rd (1980) Epidemiology and impact of low-back pain. *Spine* 5:133–142
2. Kirkaldy-Willis WH, Wedge JH, Yong-Hing K, Reilly J (1978) Pathology and pathogenesis of lumbar spondylosis and stenosis. *Spine* 3:319–328
3. Maes R, Morrison WB, Parker L, Schweitzer ME, Carrino JA (2008) Lumbar interspinous bursitis (Baastrup disease) in a symptomatic population: prevalence on magnetic resonance imaging. *Spine* 33:E211–215. doi:10.1097/BRS.0b013e318169614a
4. Sartoris DJ, Resnick D, Tyson R, Haghghi P (1985) Age-related alterations in the vertebral spinous processes and intervening soft tissues: radiologic-pathologic correlation. *AJR Am J Roentgenol* 145:1025–1030
5. Panjabi MM, Goel VK, Takata K (1982) Physiologic strains in the lumbar spinal ligaments. An in vitro biomechanical study 1981 Volvo Award in Biomechanics. *Spine* 7:192–203
6. Iida T, Abumi K, Kotani Y, Kaneda K (2002) Effects of aging and spinal degeneration on mechanical properties of lumbar supraspinous and interspinous ligaments. *Spine J* 2:95–100. doi:S1529943002001420[pii]
7. Scapinelli R, Stecco C, Pozzuoli A, Porzionato A, Macchi V, De Caro R (2006) The lumbar interspinous ligaments in humans: anatomical study and review of the literature. *Cells Tissues Organs* 183:1–11. doi:10.1159/000094901
8. Tehranzadeh J, Andrews C, Wong E (2000) Lumbar spine imaging. Normal variants, imaging pitfalls, and artifacts. *Radiol Clin North Am* 38:1207–1253 v–vi
9. Jinkins JR (2004) Acquired degenerative changes of the intervertebral segments at and suprajacent to the lumbosacral junction. A radioanatomic analysis of the nondiscal structures of the spinal column and perispinal soft tissues. *Eur J Radiol* 50:134–158. doi:10.1016/j.ejrad.2003.10.014
10. Fujiwara A, Tamai K, An HS, Shimizu K, Yoshida H, Saotome K (2000) The interspinous ligament of the lumbar spine. Magnetic resonance images and their clinical significance. *Spine* 25:358–363
11. Brant-Zawadzki MN, Jensen MC, Obuchowski N, Ross JS, Modic MT (1995) Interobserver and intraobserver variability in interpretation of lumbar disc abnormalities. A comparison of two nomenclatures. *Spine* 20:1257–1263 (discussion 1264)
12. Goobar JE, Sartoris DJ, Hajek PC, Baker LL, Haghghi P, Hesselink J, Resnick D (1987) Magnetic resonance imaging of the lumbar spinous processes and adjacent soft tissues: normal and pathologic appearances. *J Rheumatol* 14:788–797
13. Cohen J (1960) A coefficient of agreement for nominal scales. *Educ Psychol Meas* 20:37–46
14. Landis JR, Koch GG (1977) The measurement of observer agreement for categorical data. *Biometrics* 33:159–174
15. Fujiwara A, Tamai K, Yamato M, An HS, Yoshida H, Saotome K, Kurihashi A (1999) The relationship between facet joint osteoarthritis and disc degeneration of the lumbar spine: an MRI study. *Eur Spine J* 8:396–401. doi:90080396.586[pii]
16. Pfirrmann CW, Metzdorf A, Zanetti M, Hodler J, Boos N (2001) Magnetic resonance classification of lumbar intervertebral disc degeneration. *Spine* 26:1873–1878
17. Lamer TJ, Tiede JM, Fenton DS (2008) Fluoroscopically-guided injections to treat “kissing spine” disease. *Pain Physician* 11:549–554
18. Mitra R, Ghazi U, Kirpalani D, Cheng I (2007) Interspinous ligament steroid injections for the management of Baastrup’s disease: a case report. *Arch Phys Med Rehabil* 88:1353–1356. doi:10.1016/j.apmr.2007.05.033
19. Bywaters EG, Evans S (1982) The lumbar interspinous bursae and Baastrup’s syndrome. An autopsy study. *Rheumatol Int* 2:87–96