

# Neuromuscular performance of paretic versus non-paretic plantar flexors after stroke

Marius Steiro Fimland · Per Marius R. Moen ·  
Tessa Hill · Tor Ivar Gjellesvik · Tom Tørhaug ·  
Jan Helgerud · Jan Hoff

Received: 17 September 2010 / Accepted: 17 March 2011 / Published online: 1 April 2011  
© The Author(s) 2011. This article is published with open access at Springerlink.com

**Abstract** The objective of this study was to compare the neuromuscular function of the paretic and non-paretic plantar flexors (i.e. soleus, gastrocnemius medialis, lateralis) in chronic stroke patients. It was hypothesized that the contractile rate of force development (RFD) and neural activation, assessed by electromyogram (EMG) and V-waves normalized to the M-wave, and voluntary activation (twitch interpolation) would be reduced during plantar flexor maximum voluntary isometric contraction and that the evoked muscle twitch properties would be reduced in the paretic limb. Ten chronic stroke survivors completed the study. The main findings were that the paretic side showed deteriorated function compared to the non-paretic leg in terms of (1) RFD in all analyzed time

windows from force onset to 250 ms, although relative RFD (i.e. normalized to maximum voluntary force) was similar; (2) fast neural activation (for most analyzed time windows), assessed by EMG activity in time windows from EMG onset to 250 ms; (3) V-wave responses (except for gastrocnemius medialis); (4) voluntary activation; (5) the evoked peak twitch force, although there was no evidence of intrinsic muscle slowing; (6) EMG activity obtained at maximal voluntary force. In conclusion, this study demonstrates considerable neuromuscular asymmetry of the plantar flexors in chronic stroke survivors. Effective rehabilitation regimes should be investigated.

**Keywords** H-reflex · Neural drive · Brain infarction · Cerebrovascular accident · Rehabilitation

Communicated by Arnold de Haan.

M. S. Fimland (✉)  
Department of Public Health and General Practice,  
Faculty of Medicine, Norwegian University of Science  
and Technology, 7489 Trondheim, Norway  
e-mail: marius.fimland@ntnu.no;  
marius.steiro.fimland@stolav.no

M. S. Fimland  
Hysnes Rehabilitation Center, St. Olavs University Hospital,  
Trondheim, Norway

P. M. R. Moen · T. Hill · J. Helgerud · J. Hoff  
Department of Circulation and Medical Imaging,  
Faculty of Medicine, Norwegian University of Science  
and Technology, Trondheim, Norway

T. I. Gjellesvik · T. Tørhaug · J. Hoff  
Department of Physical Medicine and Rehabilitation,  
St. Olavs University Hospital, Trondheim, Norway

J. Helgerud  
Hokksund Medical Rehabilitation Center, Hokksund, Norway

## Introduction

5–7 million people died of stroke in 2005, and there were 62 million survivors worldwide (Strong et al. 2007). The majority of these are chronically disabled. Reduced maximal muscle strength is probably the best documented motor impairment after stroke (Bohannon 2007; Canning et al. 2004), particularly on the side contralateral to the lesion (Bohannon and Walsh 1992; Horstman et al. 2009).

Recently, the importance of explosive force production, namely rate of force development (RFD) ( $\Delta\text{force}/\Delta\text{time}$ ) in the early phase of force production (<250 ms) has been emphasized for high functional performance (e.g. walking, postural balance, and avoiding falls) in elderly and diseased populations (Fleming et al. 1991; Suetta et al. 2004, 2007; Aagaard et al. 2010). The capacity of the knee extensors (Bohannon and Walsh 1992; Horstman et al. 2010) and arm muscles (Canning et al. 1999; McCrea et al. 2003) to

perform fast voluntary contractions is reduced after stroke, particularly on the paretic side. However, no studies have investigated the degree of hemiparesis with regards to plantar flexor RFD at various time windows, which are important for different functional performance tasks, such as locomotion and postural balance. This investigation is of importance as the plantar flexors provide the majority of the power for onward gait progression (Winter 1983), and plantar flexor weakness is considered a limiting factor of gait speed in stroke survivors (Nadau et al. 1999).

There is a moderate to strong relationship between RFD and surface electromyogram (EMG) activity in the early phase of muscle contraction, indicating that contractile RFD is greatly dependent on the level of neuromuscular activity (Del Balso and Cafarelli 2007; Klass et al. 2008; Aagaard 2003). Hence, it is likely that the EMG activity in the early phase of contraction is attenuated in the paretic limb compared with the non-paretic limb after stroke. Indeed, some studies have reported abnormal neuromuscular activation among stroke survivors (Horstman et al. 2008; Newham and Hsiao 2001), which impairs their ability to drive the relevant muscles in both paretic and non-paretic limbs, although the impairment is usually more severe in paretic limbs. Recently, Klein et al. (2010) reported that paretic plantar flexor strength, EMG amplitude, and voluntary activation (twitch interpolation) was less than one half, about a third, and about a half, respectively, compared with the non-paretic limb. However, the degree of neural impairment of the paretic versus non-paretic plantar flexors during rapid contractions in chronic stroke has not been assessed.

The contractile properties of the muscle–tendon complex are commonly assessed with electrically stimulated contractions and are considered to reflect the morphology and mechanical muscle function of these tissues (Harridge et al. 1996). Consequently, the evoked muscle twitch properties were found to be associated with early RFD during voluntary contraction (Andersen and Aagaard 2006). To assess whether some of the hypothesized reduction in contractile RFD of the paretic limb could be due to changes at the muscle–tendon level we also wanted to assess muscle twitch properties.

An increasing number of studies have employed electrically evoked V-waves (a variant of the H-reflex) to assess the voluntary motor output from spinal motor neurons to muscle fibers in healthy individuals (Fimland et al. 2009; Gondin et al. 2006; Aagaard et al. 2002b), and recently also in multiple sclerosis patients (Fimland et al. 2010). The V-wave is produced when a stimulus sufficient to evoke a maximal M-wave is delivered to a motor nerve during voluntary contraction. The peak-to-peak amplitude of the V-wave is considered to reflect the magnitude of descending neural drive from supraspinal centres to spinal

motor neurons (Upton et al. 1971; Aagaard et al. 2002b), though spinal factors (motor neuron excitability, pre/post-synaptic inhibition) could also be implicated (Aagaard 2003). This technique was recently proposed to be a useful and non-invasive tool to investigate neural alterations in neurological patients (Fimland et al. 2010).

To prescribe effective rehabilitation regimes, it is important to improve the understanding of asymmetry of motor performance between limbs after stroke and its underlying mechanisms. Therefore, the objective of this study was to compare the neuromuscular function of the paretic and non-paretic plantar flexors in chronic stroke survivors, with special regard to neural impairments of the paretic plantar flexors. It was hypothesized that the RFD and neural activation (assessed by EMG, V-wave responses and twitch interpolation technique) would be reduced and that the intrinsic muscle properties would be diminished in the paretic compared with the non-paretic plantar flexors.

## Methods

### Participants

Twelve participants who had suffered a cerebrovascular injury (8 left hemisphere lesions and 4 right hemisphere lesions) were recruited through a stroke rehabilitation center register. All participants took part in physical therapy sessions regularly at the community-based level. Inclusion criteria were >6 months since stroke, and moderate to severe hemiparesis but with the capacity of walking independently, although use of a walking stick or orthosis was permitted. The exclusion criteria were high blood pressure resistant to treatment, pregnancy, reduced cognitive and visuospatial abilities to such an extent that it could influence the ability to undergo testing. All recruited participants underwent a medical examination before final inclusion. Two participants were excluded: one because no plantar flexor hemiparesis was observed and the other because of discomfort due to spasticity that was caused by electrical stimulation of the tibial nerve. The study was approved by the Regional Committee for Medical Research Ethics and all participants signed informed consent prior to inclusion. We certify that all applicable institutional and governmental regulations concerning the ethical use of human volunteers were followed during the course of this research. Participant characteristics are presented in Table 1.

### Study overview

This study compared the contractile RFD, muscle contractile properties, EMG activity, V-wave responses, and

**Table 1** Participant characteristics

Age (years)	44.8 (22–61)
Time since stroke (years)	6.5 (0.8–20.9)
Type of stroke (ischemic/hemorrhage)	7/3
Side of stroke (left/right)	7/3
Gender (male/female)	6/4
Functional ambulation category	5
Walking aids	Walking stick, $n = 3$ Toe-off orthosis, $n = 3$
Other conditions	Epilepsy, $n = 2$ Diabetes, $n = 1$ Rare blood disease, $n = 1$ Total hip replacement (2 years prior), $n = 1$ Aorta valve malfunction (operated 4 years prior), $n = 1$
Medications	Thrombotic, $n = 10$ Hypertension, $n = 3$ Epilepsy, $n = 2$ Hypercholesterolemia, $n = 6$ Depressant, $n = 1$ Diabetic, $n = 1$

Data are presented as mean (range) where applicable

voluntary activation via twitch interpolation, as well as the maximal muscle strength of the paretic and non-paretic plantar flexors of chronic stroke survivors.

### Experimental procedure

Prior to the experimental session, the participants attended two sessions in which they were familiarized with electrical stimulation and practiced plantar flexor maximum voluntary isometric contractions (MVCs).

To obtain MVCs and electrophysiological measurements of the plantar flexors, participants were lying in the prone position on a bench with one foot (in random order) placed in a custom-made isometric dynamometer made of steel and hard plastic. Rigid straps made sure the heel and forefoot were secured to the footplate with the ankle in a 90° position. The tested leg was fully extended. The opposite leg rested on a pillow with the knee slightly flexed. Participants were instructed to perform the MVCs as ‘fast and hard as possible’, and were given strong verbal encouragement. To optimize performance during the experimental session, participants were provided energetic verbal encouragement, and visual feedback of force on a computer screen.

After positioning of electrodes and the subject in the correct position, electrical stimuli of increasing current

were delivered to the tibial nerve. The stimulation started below H-reflex threshold and the current was increased by 2–5 mA every 10 s until the maximal peak-to-peak amplitude SOL M-wave was obtained. The stimulation intensity was doubled and three maximal M-waves and associated mechanical twitches were recorded. Subsequently, eight V-waves and concomitant  $M_{\text{SUP}}$ -waves and interpolated twitches were obtained during MVCs at a rate of 1 per 45 s. These responses were manually elicited ~2 s after onset of MVC. Subsequently, the procedure was repeated for the other leg.

### Electromyogram and force recordings

After careful preparation of the skin to obtain inter-electrode impedance <5 k $\Omega$ , pairs of bipolar Ag/AgCl surface electrodes (Ambu M-00-S, Ballerup Denmark) were placed on the soleus (SOL) along the mid-dorsal line, approximately 5 cm distal to the gastrocnemius muscles, while the electrodes on gastrocnemius medialis (GM), tibialis anterior (TA), and gastrocnemius lateralis (GL) were placed according to the recommendations proposed by SENIAM (Hermens et al. 2000).

Electromyogram was sampled (ME6000 Biomonitor, Mega Electronics LTD, Kuopio, Finland) at 2 kHz, CMRR: 110 dB, amplified, band-pass filtered (8–500 Hz), and stored on a personal computer. Neuromuscular activity levels for each muscle were calculated by converting the raw EMG activity to the root mean square (RMS) values of the 500 ms (250 ms on each side) epoch corresponding with peak force preceding the evoked maximal M-wave superimposed on the MVC ( $M_{\text{SUP}}$ ). The  $\text{EMG}_{\text{RMS}}$  activity, except from antagonist TA coactivity which was expressed in absolute units (mV), was normalized to the average  $M_{\text{SUP}}$  (i.e.  $\text{EMG}_{\text{RMS}}/M_{\text{SUP}}$ ). To estimate rapid neural activity,  $\text{EMG}_{\text{RMS}}$  activity was analyzed in the time windows 0–50, 0–100, 0–150, 0–200, and 0–250 ms and normalized to the average  $M_{\text{SUP}}$ . Onset of EMG activity was identified manually.

The contractile RFD ( $\text{N s}^{-1}$ ) was defined as the mean slope of the force–time curve ( $\Delta\text{force}/\Delta\text{time}$ ) in intervals of 0–50, 0–100, 0–150, 0–200, and 0–250 ms. Relative RFD (i.e. RFD/MVC expressed as %MVC/s) was also calculated for the same time windows. The onset of contraction was defined as the point corresponding to 3% of peak force. The three MVCs with the highest peak forces were analyzed and averaged to obtain the above EMG and force variables.

Voluntary activation was determined via the twitch interpolation technique. Percent voluntary activation was calculated as  $[1 - (\text{superimposed twitch}/\text{resting peak twitch})] \times 100$  (Belanger and McComas 1981).

The isometric forces were recorded by a force-transducer (Model 363-D3-50-20P1, Revere Transducers,

Tustin, CA, USA) that responds linearly within a load ranging between 0 and 250 kg with a reproducibility error of 0.1% attached to the ankle dynamometer. Force was recorded at 1 kHz and digitally low-pass filtered (10 Hz). EMG, contractile RFD, and plantar flexion force were analyzed with commercial software (Mega Electronics LTD, Kuopio, Finland).

#### Evoked potentials

To evoke interpolated mechanical twitches of the plantar flexors, and V-waves, and concomitant  $M_{\text{SUP}}$ -waves in the SOL, GM, and GL we delivered 1 ms square wave stimuli to the posterior tibial nerve in the popliteal fossa using a constant-current stimulator (DS7AH, Digitimer, Welwyn Garden City, UK), via gel-coated bipolar felt pad electrodes (8 mm diameter, 25 mm between tips; Digitimer, Welwyn Garden City, UK). To avoid anodal block, the cathode was placed medial to the anode (Pierrot-Deseilligny and Burke 2005). After the optimal site of stimulation was determined, rigid taping ensured that the stimulation electrode maintained the same position throughout the experimental session. 200% of the stimulus intensity needed to obtain a maximal SOL M-wave from the resting muscle was employed to evoke V-waves, maximal M-waves, and interpolated twitches. To ensure that measurement conditions were stable, only V-waves with a corresponding  $M_{\text{SUP}} > 90\%$  of the highest  $M_{\text{SUP}}$  were included in the analysis (Fimland et al. 2009).

#### Muscle contractile properties

The following twitch characteristics were determined from the mechanical twitch associated with the maximal M-wave evoked at rest: (1) peak twitch, defined as the difference from baseline to peak twitch force, (2) time to peak twitch force, defined as the time difference between onset (3% of peak twitch) and peak twitch force, and (3) half-relaxation time, defined as the time difference between peak twitch force and half-twitch force. Three twitches were analyzed and averaged for each limb.

#### Statistical analysis

The Wilcoxon signed ranks test (non-parametric equivalent to the paired  $t$  test) was used to assess differences between the paretic and non-paretic plantar flexors. Statistical significance was set at  $P < 0.05$  (two-tailed). The data are presented as mean  $\pm$  SD in the text and tables and mean  $\pm$  SE in figures, unless otherwise stated. Statistical analyses were performed with SPSS version 17.0 and 18.0 (Chicago, IL, USA).

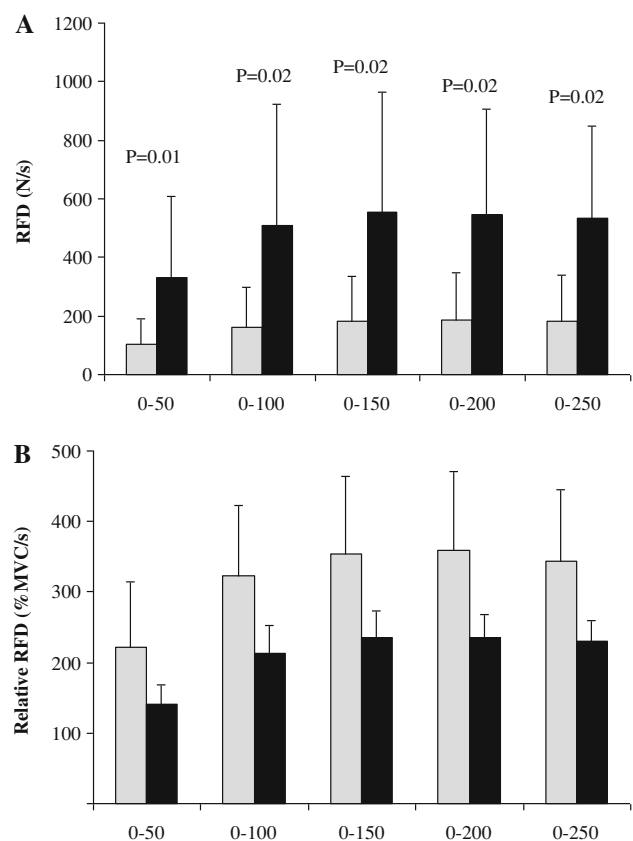
## Results

MVC, contractile RFD, voluntary activation, and muscle twitch properties

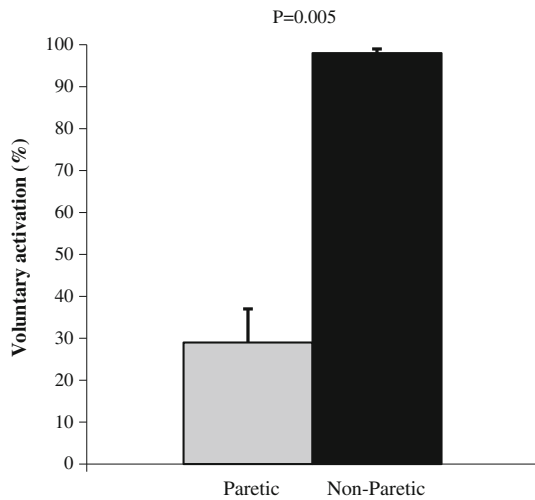
The MVC of the paretic limb was  $70 \pm 62$  N while the non-paretic leg produced  $229 \pm 66$  N ( $-72\%$ ;  $P = 0.005$ ). Contractile RFD was significantly lower in the paretic leg compared with the non-paretic leg during time windows 0–50, 0–100, 0–150, 0–200, and 0–250 ms ( $-54$  to  $-67\%$ ; Fig. 1a). Relative RFD (i.e. %MVC/s) was similar between limbs ( $P = 0.515$ – $0.767$ ; Fig. 1b). Voluntary activation was substantially reduced in the paretic- compared with the non-paretic plantar flexors ( $-71\%$ ; Fig. 2) The evoked peak twitch force of the paretic plantar flexors was significantly lower compared with the non-paretic plantar flexors ( $-35\%$ ), while time to peak twitch force and half-relaxation time were similar for both limbs (Table 2).

#### EMG activity

Significantly lower  $\text{EMG}_{\text{RMS}}/M_{\text{SUP}}$  activity of the SOL, GM, and GL were observed during MVC of the paretic limb



**Fig. 1** Absolute (a) and relative (b) contractile rate of force development (RFD) of the paretic (gray bars) and non-paretic plantar flexors. RFD is calculated in time windows from force onset to 250 ms. Mean  $\pm$  SE

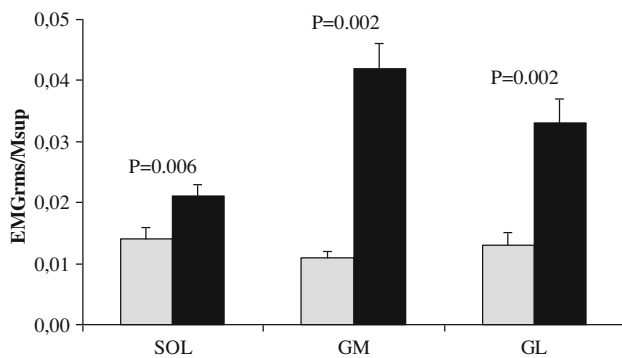


**Fig. 2** Percent voluntary activation of the plantar flexors calculated via twitch interpolation. Mean ± SE

**Table 2** Muscle contractile properties

	Paretic	Non-paretic	<i>P</i> value
Peak twitch (N)	34 (19)	52 (22)	0.01
Time to peak twitch (ms)	80 (9)	79 (28)	0.73
Twitch half-relaxation time (ms)	87 (24)	101 (43)	0.23

Data are presented as mean (SD)



**Fig. 3** Root-mean-square electromyogram activity ( $EMGRMS$ ) obtained in the soleus (SOL) gastrocnemius medialis (GM) and lateralis (GL) during plantar flexor maximum voluntary isometric contraction, and normalized to the superimposed M-waves ( $M_{SUP}$ ). Gray bars paretic limb. Mean ± SE

compared with the non-paretic limb (−34 to −73%; Fig. 3). No difference between limbs could be detected for absolute (mV) antagonist TA  $EMGRMS$  coactivity ( $P = 0.62$ ). The SOL of the paretic limb had a lower  $EMGRMS/M_{SUP}$  during time windows 0–100 and 0–200 ms (−25, −32%, respectively), but did not reach statistical significance for the time intervals 0–50, 0–150, and 0–250 ms (Table 3). The GM  $EMGRMS/M_{SUP}$  of the paretic limb was significantly reduced

**Table 3** Rapid neural activation

	Paretic	Non-paretic	<i>P</i> value
Soleus (ms)			
0–50	0.004 (0.002)	0.007 (0.007)	0.08
0–100	0.008 (0.004)	0.015 (0.013)	0.03
0–150	0.008 (0.005)	0.013 (0.009)	0.06
0–200	0.009 (0.004)	0.015 (0.007)	0.02
0–250	0.011 (0.006)	0.016 (0.009)	0.13
Gastrocnemius medialis (ms)			
0–50	0.003 (0.003)	0.013 (0.013)	0.008
0–100	0.004 (0.003)	0.022 (0.017)	0.006
0–150	0.005 (0.004)	0.026 (0.017)	0.002
0–200	0.006 (0.004)	0.028 (0.014)	0.002
0–250	0.006 (0.004)	0.031 (0.014)	0.002
Gastrocnemius lateralis (ms)			
0–50	0.004 (0.004)	0.008 (0.008)	0.12
0–100	0.007 (0.005)	0.019 (0.015)	0.01
0–150	0.007 (0.004)	0.020 (0.011)	0.002
0–200	0.008 (0.005)	0.023 (0.012)	0.002
0–250	0.009 (0.005)	0.024 (0.010)	0.002

Data are presented as mean (SD). Average root-mean-square electromyogram activity normalized to the superimposed M-wave (i.e.  $EMGRMS/M_{SUP}$ ) in time windows from electrical onset to 250 ms

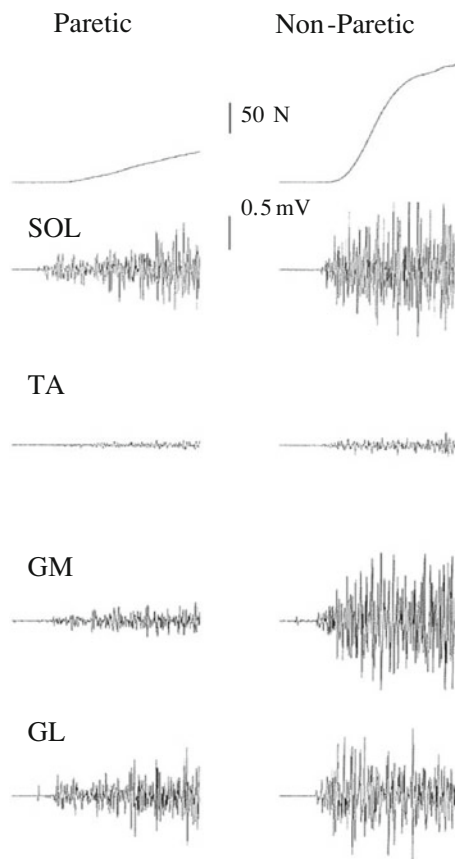
for all time windows (−58 to −81%; Table 3). The GL of the paretic limb had a lower  $EMGRMS/M_{SUP}$  during time windows 0–100, 0–150, 0–200, and 0–250 ms (−41 to −61%), but did not reach statistical significance for the time window 0–50 ms (Table 3). Sample recordings of raw force and EMG traces are presented in Fig. 4.

**M-waves and V-waves**

The  $V/M_{SUP}$  ratios for the SOL and GL were significantly reduced for the paretic limb compared with the non-paretic leg (−35, −34%), while no differences were observed for the GM  $V/M_{SUP}$  ratio (Fig. 5). There were no differences between limbs for the maximal M-waves evoked at rest or during MVC (i.e.  $M_{SUP}$ ; Table 4).

**Discussion**

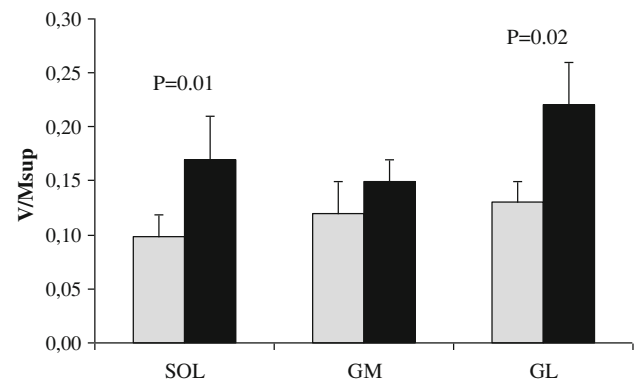
This study examined side-to-side differences of contractile RFD, normalized EMG, V-wave responses, voluntary activation, and muscle twitch properties of the plantar flexors of the paretic and non-paretic legs in chronic stroke patients. The main findings are that (1) absolute RFD was substantially reduced in the paretic plantar flexors in all analyzed time windows from force onset to 250 ms of muscle contraction; (2) fast neural activation (normalized



**Fig. 4** Recordings of plantar flexor maximum voluntary isometric contraction force and corresponding soleus (*SOL*), tibialis anterior (*TA*), gastrocnemius medialis (*GM*) and gastrocnemius lateralis (*GL*) electromyogram. The end of the sample traces are 500 ms after onset of contraction. The differences between the paretic and non-paretic limb can easily be observed

EMG activity in time windows before 250 ms) was reduced in the paretic leg for most time windows; (3) the normalized V-wave was substantially reduced in the *SOL* and *GL* of the paretic limb; and (4) voluntary activation was considerably reduced in the paretic plantar flexors. In addition, normalized EMG activity obtained during maximal force, as well as MVC, was substantially decreased in the paretic limb.

The present investigation found substantial differences in the contractile RFD between the lower limbs in all 50 ms time windows from 0 to 250 ms. Absolute RFD was between one-half and one-third of the paretic limb. However, when RFD was normalized to MVC (i.e. relative RFD) these differences disappeared. This reveals that there is no significant difference between limbs with respect to contractile speed properties of the muscles. It also demonstrates that maximum voluntary force is important to achieve a high absolute RFD for these patients in all investigated time periods. Similar to the results for absolute RFD, the normalized EMG activity



**Fig. 5** V-waves normalized to the concomitant superimposed M-wave ( $M_{SUP}$ ) obtained in the soleus (*SOL*) gastrocnemius medialis (*GM*) and lateralis (*GL*) during plantar flexor maximum voluntary isometric contraction. Gray bars paretic limb. Mean  $\pm$  SE

**Table 4** Amplitudes ( $\mu$ V) of evoked potentials

	Paretic	Non-paretic	<i>P</i> value
<b>Soleus</b>			
$M_{MAX}$	7,317 (2,730)	6,921 (2,293)	0.846
$M_{SUP}$	8,352 (2,839)	9,481 (1,751)	0.232
V-wave	935 (888)	1,654 (1,448)	0.002
<b>Gastrocnemius medialis</b>			
$M_{MAX}$	7,488 (2,178)	7,002 (2,225)	0.557
$M_{SUP}$	7,492 (2,873)	6,581 (3,285)	0.131
V-wave	924 (727)	885 (406)	0.625
<b>Gastrocnemius lateralis</b>			
$M_{MAX}$	6,222 (2,235)	7,242 (3,041)	0.232
$M_{SUP}$	6,890 (2,456)	7,887 (2,741)	0.557
V-wave	788 (392)	1,784 (1,472)	0.006

Data are presented as mean (SD)

$M_{MAX}$  Maximal M-wave evoked at rest,  $M_{SUP}$  maximal M-wave evoked during plantar flexor maximum voluntary isometric contraction

during the 50 ms time windows from onset of electrical activity to 250 ms was substantially lower in the paretic plantar flexor muscles for most time windows (see Table 3). Unsurprisingly, this suggests that reduced neuromuscular activity to a large extent explains reduced contractile RFD of the paretic plantar flexors. It can be speculated that the gastrocnemii contributed more to the absolute RFD impairment of the paretic limb, as the EMG impairments seemed to be more substantial for these muscles than the *SOL* (see Table 3).

It should be noted that substantial disuse atrophy of the muscles occurs after stroke (Hachisuka et al. 1997; Slager et al. 1985) which would negatively affect explosive- and maximal strength capacity, particularly in the paretic limb (Gracies 2005). The present participants had an average

time since stroke of 6.5 years, which would provide ample time for disuse atrophy to occur. In support of this, a decreased magnitude of the evoked twitch was observed in the paretic versus the non-paretic plantar flexors, although there was no evidence for slowing of the paretic versus the non-paretic leg assessed by the time to peak twitch or half-relaxation time of the twitch.

The reduced ability to generate maximal force in the paretic compared with the non-paretic limb is in line with several previous reports (Bohannon and Walsh 1992; Gracies 2005; Klein et al. 2010), and was accompanied by lower normalized SOL, GM, and GL EMG activity, as well as reduced plantar flexor voluntary activation in the paretic compared with the non-paretic leg. Decreased agonist EMG activity of the paretic plantar flexors is in line with findings from paretic thigh (Horstman et al. 2008; Newham and Hsiao 2001) and recently also from paretic plantar flexor muscles (Klein et al. 2010). Substantially reduced voluntary activation of paretic plantar flexors is in agreement with Klein et al. (2010).

In addition to conventional EMG recordings we also evoked V-wave responses in the present study. Like EMG amplitude, the V-wave is also considered a measure of efferent neural drive but depends on different underlying physiological mechanisms (Aagaard 2003; Fimland et al. 2010). The EMG amplitude comprises the sum of the electrical contributions from active motor units located underneath the recording electrodes (Farina et al. 2004). In contrast, the evoked V-wave depends on the amount of antidromic clearing attributable to collision between volitionally generated descending action potentials and antidromic action potentials evoked by supramaximal nerve stimulation (Aagaard et al. 2002b; Fimland et al. 2010). That is, greater descending drive should abolish more of the evoked antidromic action potentials, allowing more of the evoked reflex to pass to the muscle where it is recorded as a V-wave (see Aagaard et al. 2002b for a more detailed description). Furthermore, the V-wave amplitude involves H-reflex excitability, namely factors such as motor unit excitability and pre/post-synaptic inhibition (Aagaard 2003). Substantial reliability was recently documented for normalized V-wave responses of the SOL and GM (intra-class correlation coefficients 0.86 and 0.90, respectively) (Solstad et al. 2011).

As expected, there were significant differences between the paretic and non-paretic SOL and GL  $V/M_{\text{SUP}}$  ratios. There was, however, no difference in the GM  $V/M_{\text{SUP}}$  ratio. This is quite surprising considering the EMG results which suggest that the GM is at least as affected as the SOL and GL. Nonetheless, the lower V-wave responses of the SOL and GL of paretic plantar flexors suggest reduced descending drive from supraspinal centers to the paretic limb, although spinal factors may also be involved

(Fimland et al. 2010; Upton et al. 1971; Aagaard 2003; Aagaard et al. 2002b).

Although methodological limitations exist with surface EMG recordings (for review see Farina et al. 2004), the reduced EMG activity recorded in the paretic limb is to a large extent caused by a reduced outflow of action potentials from spinal motoneurons to muscle fibers. This notion is further strengthened by the V-wave measurements. Further, both the EMG and V-wave responses were normalized to the evoked compound muscle action potential ( $M_{\text{SUP}}$ ), which should at least partly take into account peripheral influences on the EMG and V-wave recordings (Gandevia 2001; Aagaard 2003). To our knowledge, this is the first time that rapid EMG activity and the evoked V-wave has been obtained in stroke patients; thus, the present study has made an important contribution by reporting new evidence of reduced efferent neural drive to muscle fibers of the paretic limb after stroke during explosive and maximal force production.

The reduced EMG and V-wave responses to muscle fibers in the paretic limb we observed are caused to a large extent by reduced descending drive from supraspinal centers, and probably increased recurrent inhibition (Garland et al. 2009). This will result in slower motoneuron firing frequencies and insufficient motoneuron recruitment (Garland et al. 2009; Gracies 2005). However, differences in motoneuron excitability and pre/post-synaptic inhibition may also influence V-wave responses (Aagaard 2003).

The SOL, GM, and GL  $V/M_{\text{SUP}}$  ratios in the paretic leg were 0.10, 0.13, and 0.13, respectively, and in the non-paretic leg 0.17, 0.16, and 0.22, respectively. The values for the paretic limb are, to our knowledge, the lowest reported for any group of subjects. Fimland et al. (2010) reported that the SOL  $V/M_{\text{SUP}}$  was 0.17 in multiple sclerosis patients. This was similar to the non-paretic limb in the present study, indicating that efferent neural drive to muscle fibers of the non-paretic limb is reduced, and/or that pre/post synaptic inhibition is altered. This is in line with studies reporting that the muscle strength and neuromuscular activation is reduced also in the non-paretic limb after stroke (Horstman et al. 2008; Newham and Hsiao 2001). However, a methodological concern is that the participants in the present study were tested in prone position, while the multiple sclerosis patients were tested in a sitting position, which may be more optimal for the magnitude of efferent neural drive (Maffiuletti and Lepers 2003). It should also be noted that voluntary activation determined via twitch interpolation, in contrast to the V-wave responses, indicated the near-full activation of the non-paretic limb in our study and another recent investigation (Klein et al. 2010).

Not all time windows of rapid EMG activity were significantly reduced in the paretic limb. However, the EMG signal is influenced by many non-neural factors (Farina

et al. 2004; Keenan et al. 2005). In the present study these factors should partly be accounted for, as EMG signals were normalized to the compound muscle action potential (Gandevia 2001). Lack of statistical power due to a low number of participants ( $n = 10$ ) likely contributed to the inability to find statistical significance for all time windows.

Force production is also dependent on factors that are located distal to the neuromuscular junction. A substantially reduced peak mechanical twitch was observed for the paretic plantar flexors. This suggests detrimental effects on muscle morphology in the paretic compared with the non-paretic limb. The finding of decreased evoked force of the plantar flexors is not entirely in line with the findings of Horstman et al. (2008) who observed reduced intrinsic capacities of paretic and non-paretic knee extensors in subacute stroke compared with healthy volunteers. The inability of the study to detect differences between limbs could be due to the fact that their volunteers were in the subacute phase, and thus paretic muscles may not have degraded to the same extent as in the present study. We observed no differences in the maximal M-waves evoked at rest or during MVC, suggesting that the muscle fibers of the plantar flexor muscles of the paretic and non-paretic limbs are similarly responsive to neural outflow. Thus, the peripheral impairments appear to be considerably less than the neurological impairments.

The side-to-side differences observed underlines the need for effective rehabilitation programs for improving neuromuscular activation and explosive strength of particularly the paretic leg in stroke survivors. Previous well-controlled studies in stroke patients investigating effects of strength training on locomotion and postural balance performance have reported little or no effects (Saunders et al. 2009). However, these studies did not employ a training strategy optimized for developing explosive strength. That is, strength training was not performed with high intentional velocity which has been suggested to be an important stimulus for explosive strength adaptation (Behm and Sale 1993). Several previous studies have shown that strength training is an effective way of increasing efferent neural drive and explosive strength in healthy young and elderly individuals (Caserotti et al. 2008; Aagaard et al. 2002a), and in various other patient groups (Fimland et al. 2010; Suetta et al. 2004), and should be further investigated for stroke patients. Notably, for the paretic plantar flexors we observed the lowest V-wave responses reported for any group of subjects. However, 15 sessions of maximal strength training normalized this neurological impairment in multiple sclerosis patients (Fimland et al. 2010), and we suggest that this should also be examined in stroke patients.

In conclusion, the present study demonstrates that the neuromuscular performance of paretic versus non-paretic

plantar flexors after stroke is substantially decreased. Specifically, contractile RFD and rapid neural activation during various time windows, evoked peak twitch force, voluntary activation and normalized EMG activity, and V-wave responses, as well as maximal isometric strength were, in general, substantially lower on the paretic side.

**Open Access** This article is distributed under the terms of the Creative Commons Attribution Noncommercial License which permits any noncommercial use, distribution, and reproduction in any medium, provided the original author(s) and source are credited.

## References

- Aagaard P (2003) Training-induced changes in neural function. *Exerc Sport Sci Rev* 31:61–67
- Aagaard P, Simonsen EB, Andersen JL, Magnusson P, Dyhre-Poulsen P (2002a) Increased rate of force development and neural drive of human skeletal muscle following resistance training. *J Appl Physiol* 93:1318–1326
- Aagaard P, Simonsen EB, Andersen JL, Magnusson P, Dyhre-Poulsen P (2002b) Neural adaptation to resistance training: changes in evoked V-wave and H-reflex responses. *J Appl Physiol* 92:2309–2318
- Aagaard P, Suetta C, Caserotti P, Magnusson SP, Kjaer M (2010) Role of the nervous system in sarcopenia and muscle atrophy with aging: strength training as a countermeasure. *Scand J Med Sci Sports* 20:49–64
- Andersen LL, Aagaard P (2006) Influence of maximal muscle strength and intrinsic muscle contractile properties on contractile rate of force development. *Eur J Appl Physiol* 96:46–52
- Behm DG, Sale DG (1993) Intended rather than actual movement velocity determines velocity-specific training response. *J Appl Physiol* 74:359–368
- Belanger AY, McComas AJ (1981) Extent of motor unit activation during effort. *J Appl Physiol* 51:1131–1135
- Bohannon RW (2007) Muscle strength and muscle training after stroke. *J Rehabil Med* 39:14–20
- Bohannon RW, Walsh S (1992) Nature, reliability, and predictive value of muscle performance measures in patients with hemiparesis following stroke. *Arch Phys Med Rehabil* 73:721–725
- Canning CG, Ada L, O'Dwyer N (1999) Slowness to develop force contributes to weakness after stroke. *Arch Phys Med Rehabil* 80:66–70
- Canning CG, Ada L, Adams R, O'Dwyer NJ (2004) Loss of strength contributes more to physical disability after stroke than loss of dexterity. *Clin Rehabil* 18:300–308
- Caserotti P, Aagaard P, Larsen JB, Puggaard L (2008) Explosive heavy-resistance training in old and very old adults: changes in rapid muscle force, strength and power. *Scand J Med Sci Sports* 18:773–782
- Del Balso C, Cafarelli E (2007) Adaptations in the activation of human skeletal muscle induced by short-term isometric resistance training. *J Appl Physiol* 103:402–411
- Farina D, Merletti R, Enoka RM (2004) The extraction of neural strategies from the surface EMG. *J Appl Physiol* 96:1486–1495
- Fimland MS, Helgerud J, Gruber M, Leivseth G, Hoff J (2009) Functional maximal strength training induces neural transfer to single-joint tasks. *Eur J Appl Physiol* 107:21–29
- Fimland MS, Helgerud J, Gruber M, Leivseth G, Hoff J (2010) Enhanced neural drive after maximal strength training in multiple sclerosis patients. *Eur J Appl Physiol* 110:435–443



- Fleming BE, Wilson DR, Pendergast DR (1991) A portable, easily performed muscle power test and its association with falls by elderly persons. *Arch Phys Med Rehabil* 72:886–889
- Gandevia SC (2001) Spinal supraspinal factors in human muscle fatigue. *Physiol Rev* 81:1725–1789
- Garland SJ, Gray VL, Knorr S (2009) Muscle activation patterns and postural control following stroke. *Mot Control* 13:387–411
- Gondin J, Duclay J, Martin A (2006) Soleus- and gastrocnemii-evoked V-wave responses increase after neuromuscular electrical stimulation training. *J Neurophysiol* 95:3328–3335
- Gracies JM (2005) Pathophysiology of spastic paresis I: paresis and soft tissue changes. *Muscle Nerve* 31:535–551
- Hachisuka K, Umezu Y, Ogata H (1997) Disuse muscle atrophy of lower limbs in hemiplegic patients. *Arch Phys Med Rehabil* 78:13–18
- Harridge SD, Bottinelli R, Canepari M, Pellegrino MA, Reggiani C, Esbjornsson M, Saltin B (1996) Whole-muscle and single-fibre contractile properties and myosin heavy chain isoforms in humans. *Pflugers Arch* 432:913–920
- Hermens HJ, Freriks B, Disselhorst-Klug C, Rau G (2000) Development of recommendations for SEMG sensors and sensor placement procedures. *J Electromyogr Kinesiol* 10:361–374
- Horstman AM, Beltman MJ, Gerrits KH, Koppe P, Janssen TW, Elich P, de Haan A (2008) Intrinsic muscle strength and voluntary activation of both lower limbs and functional performance after stroke. *Clin Physiol Funct Imaging* 28:251–261
- Horstman A, Gerrits K, Beltman M, Janssen T, Konijnenbelt M, de Haan A (2009) Muscle function of knee extensors and flexors after stroke is selectively impaired at shorter muscle lengths. *J Rehabil Med* 41:317–321
- Horstman AM, Gerrits KH, Beltman MJ, Koppe PA, Janssen TW, de Haan A (2010) Intrinsic properties of the knee extensor muscles after subacute stroke. *Arch Phys Med Rehabil* 91:123–128
- Keenan KG, Farina D, Maluf KS, Merletti R, Enoka RM (2005) Influence of amplitude cancellation on the simulated surface electromyogram. *J Appl Physiol* 98:120–131
- Klass M, Baudry S, Duchateau J (2008) Age-related decline in rate of torque development is accompanied by lower maximal motor unit discharge frequency during fast contractions. *J Appl Physiol* 104:739–746
- Klein CS, Brooks D, Richardson D, McIlroy WE, Bayley MT (2010) Voluntary activation failure contributes more to plantar flexor weakness than antagonist coactivation and muscle atrophy in chronic stroke survivors. *J Appl Physiol* 109:1337–1346
- Maffiuletti NA, Lepers R (2003) Quadriceps femoris torque and EMG activity in seated versus supine position. *Med Sci Sports Exerc* 35:1511–1516
- McCrea PH, Eng JJ, Hodgson AJ (2003) Time and magnitude of torque generation is impaired in both arms following stroke. *Muscle Nerve* 28:46–53
- Nadau S, Gravel D, Arsenaault AB, Bourbonnais D (1999) Plantarflexor weakness as a limiting factor of gait speed in stroke subjects and the compensating role of hip flexors. *Clin Biomech (Bristol, Avon)* 14:125–135
- Newham DJ, Hsiao SF (2001) Knee muscle isometric strength, voluntary activation and antagonist co-contraction in the first six months after stroke. *Disabil Rehabil* 23:379–386
- Pierrot-Deseilligny E, Burke D (2005) The circuitry of the human spinal cord: its role in motor control and movement disorders. Cambridge University Press, New York
- Saunders DH, Greig CA, Mead GE, Young A (2009) Physical fitness training for stroke patients. *Cochrane Database Syst Rev* 4:CD003316. doi:10.1002/14651858.CD003316.pub3
- Slager UT, Hsu JD, Jordan C (1985) Histochemical and morphometric changes in muscles of stroke patients. *Clin Orthop Relat Res* 199:159–168
- Solstad GM, Fimland MS, Helgerud J, Iversen VM, Hoff J (2011) Test-retest reliability of V-wave responses in the soleus and gastrocnemius medialis. *J Clin Neurophysiol* doi:10.1097/WNP.0b013e31821215cf
- Strong G, Mathers C, Bonita R (2007) Preventing stroke: saving lives around the world. *Lancet Neurol* 6:182–187
- Suetta C, Aagaard P, Rosted A, Jakobsen AK, Duus B, Kjaer M, Magnusson SP (2004) Training-induced changes in muscle CSA, muscle strength, EMG, and rate of force development in elderly subjects after long-term unilateral disuse. *J Appl Physiol* 97:1954–1961
- Suetta C, Aagaard P, Magnusson SP, Andersen LL, Sipila S, Rosted A, Jakobsen AK, Duus B, Kjaer M (2007) Muscle size, neuromuscular activation, and rapid force characteristics in elderly men and women: effects of unilateral long-term disuse due to hip-osteoarthritis. *J Appl Physiol* 102:942–948
- Upton AR, McComas AJ, Sica RE (1971) Potentiation of “late” responses evoked in muscles during effort. *J Neurol Neurosurg Psychiatry* 34:699–711
- Winter DA (1983) Energy generation and absorption at the ankle and knee during fast, natural, and slow cadences. *Clin Orthop Relat Res* 175:147–154