

Drug-Induced Leukoencephalopathy: MR Follow-Up After Methotrexate Therapy

Case **51**

Teresa Popolizio, Nicola Sforza, and Anna Maria Pennelli

- 52-year-old patient with Non-Hodgkin lymphoma.
- MR follow-up in chronic phase after treatment with methotrexate.

Late Follow-Up After Chemotherapy

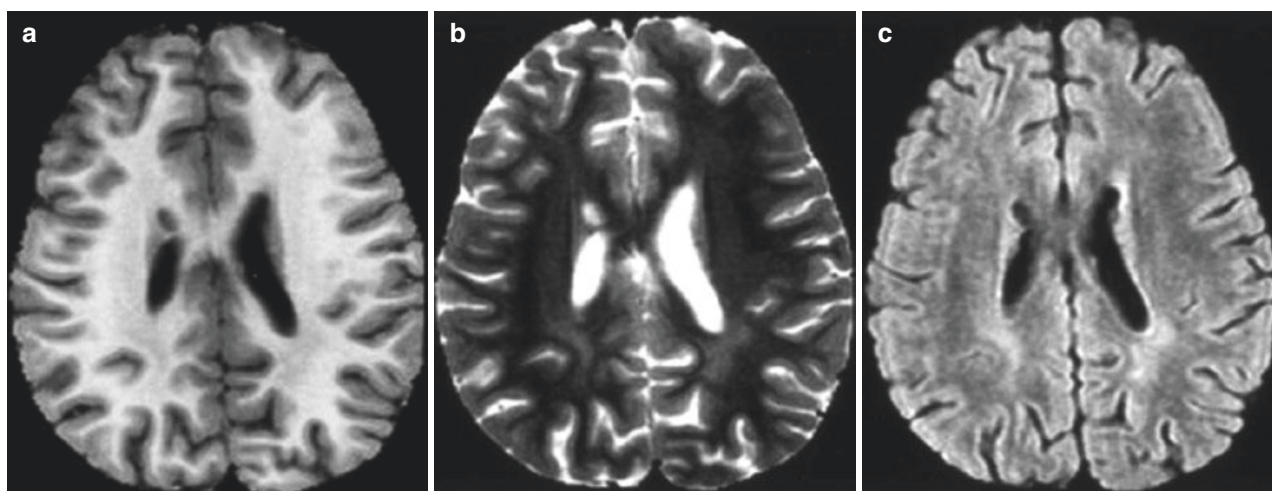


Fig. 51.1 MR SE T1-weighted (a), FSE T2-weighted (b), and FLAIR (c) sequences. Slight and circumscribed signal alteration (hypointensity in T1 and T2, hyperintensity in FLAIR) can be appreciated in the posterior periventricular white matter bilaterally

T. Popolizio (✉) · N. Sforza
Department of Neuroradiology, Fondazione IRCCS “Casa Sollievo
della Sofferenza”, San Giovanni Rotondo, FG, Italy

A. M. Pennelli
Department of Radiology, Fondazione IRCCS “Casa Sollievo della
Sofferenza”, San Giovanni Rotondo, FG, Italy