



## ASO Visual Abstract: Does Ipsilateral Cancer Increase Atypical Ductal Hyperplasia Upgrade?

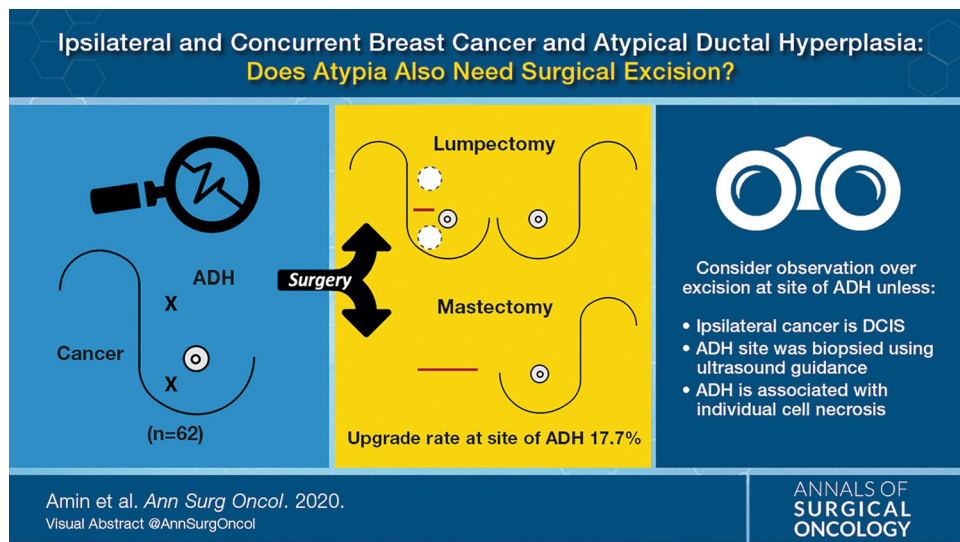
Amanda L. Amin, MD, MS<sup>1</sup>, Fang Fan, MD, PhD<sup>2</sup>, Onalisa D. Winblad, MD<sup>3</sup>, Kelsey E. Larson, MD<sup>1</sup>, and Jamie L. Wagner, DO<sup>1</sup>

<sup>1</sup>Department of Surgery, The University of Kansas Health System, Kansas City, KS; <sup>2</sup>Department of Pathology, The University of Kansas Health System, Kansas City, KS; <sup>3</sup>Department of Radiology, The University of Kansas Health System, Kansas City, KS

The upgrade rate of a site of atypical ductal hyperplasia (ADH) identified on percutaneous biopsy with a concurrent ipsilateral breast cancer is not significantly higher than historical upgrade rates for ADH alone. When considering breast conservation for breast cancer, omitting excision of the site of ADH can be considered when high-risk features

are not present, such as individual cell necrosis or ipsilateral DCIS, or if ADH was biopsied using ultrasound guidance.<sup>1</sup>

**DISCLOSURE** All authors have no commercial interest to disclose.



### REFERENCE

1. Amin AL, Fan F, Winblad OD, Larson KE, Wagner JL. Ipsilateral and concurrent breast cancer and atypical ductal hyperplasia: does atypia also need surgical excision? *Ann Surg Oncol*. 2020. <https://doi.org/10.1245/s10434-020-08896-7>.