

RESEARCH

Open Access



Obesity accelerates epigenetic aging in middle-aged but not in elderly individuals

Tapio Nevalainen^{1,2*}, Laura Kananen^{1,2}, Saara Marttila^{1,2}, Juulia Jylhävä^{1,2}, Nina Mononen^{5,7}, Mika Kähönen⁴, Olli T. Raitakari³, Antti Hervonen^{2,6}, Marja Jylhä^{2,6}, Terho Lehtimäki^{5,7} and Mikko Hurme^{1,2,7}

Abstract

Background: Human aging is associated with profound changes in one of the major epigenetic mechanisms, DNA methylation. Some of these changes occur in a clock-like fashion, i.e., correlating with the calendar age of an individual, thus providing a new aging biomarker. Some reports have identified factors associated with the acceleration of the epigenetic age. However, it is also important to analyze the temporal changes in the epigenetic age, i.e., the duration of the observed acceleration, and the effects of the possible therapeutic and lifestyle modifications.

Methods: To address this issue, we determined the epigenetic age for a cohort of 183 healthy individuals using blood samples derived from two time points that were 25 years apart (between 15–24 and 40–49 years of age). Additionally, we also determined the epigenetic ages of 119 individuals in a cohort consisting of 90-year-old participants (nonagenarians). These were determined by using the Horvath algorithm based on the methylation level of 353 CpG sites. The data are indicated as the deviation of the epigenetic age from the calendar age (calendar age minus epigenetic age = delta age, Δ AGE). As obesity is often associated with accelerating aging and degenerative phenotypes, the correlation of the body mass index (BMI) with the Δ AGE was analyzed in the following three age groups: young adults, middle-aged, and nonagenarian.

Results: The data showed that BMI is associated with decreased Δ AGE, i.e., increased epigenetic age, in middle-aged individuals. This effect is also seen during the 25-year period from early adulthood to middle age, in which an increase in the BMI is significantly associated with a decrease in the Δ AGE. We also analyzed the association between BMI and epigenetic age in young and elderly individuals, but these associations were not significant.

Conclusion: Taken together, the main finding on this report suggests that association between increased BMI and accelerated epigenetic aging in the blood cells of middle-aged individuals can be observed, and this effect is also detectable if the BMI has increased in adulthood. The fact that the association between BMI and epigenetic age can only be observed in the middle-aged group does not exclude the possibility that this association could be present throughout the human lifespan; it might just be masked by confounding factors in young adults and nonagenarian individuals.

Background

Aging is characterized by a progressive decline in physiological and cognitive functions. The chronological age of an individual is a natural parameter of choice when predicting the onset of aging-associated diseases and mortality risk. However, due to the innate complexity of aging,

the onsets of conditions can dramatically vary between individuals, making chronological age a limited predictor of aging-associated conditions. To address this discrepancy, there have been numerous attempts to establish a universal biomarker for aging, i.e., an attribute that would measure the biological age of an individual [28]. When the establishment of several disease-specific biomarkers has been successful, determination of the biological age of an individual has proven to be a more difficult task. However, despite the unsuccessful attempts, research on aging biomarker candidates has been informative

* Correspondence: tapio.l.nevalainen@uta.fi

¹Department of Microbiology and Immunology, School of Medicine, University of Tampere, Tampere, Finland

²Gerontology Research Center, Tampere, Finland

Full list of author information is available at the end of the article



and increased knowledge on changes in various aging-associated functions (e.g., inflammatory cytokines and telomere length) [28].

One of the most recent approaches used to assess the biological age is the utilization of epigenetic mechanisms, namely, DNA methylation. This approach is based on the observations that aging is associated with changes in the DNA methylation levels [6, 12, 18]. More specifically, at the genome-wide level, thousands of methylation-sensitive cytosine bases residing in the CpG (cytosine-phosphate-guanine) sites along DNA are either hyper- or hypomethylated when DNA methylomes of younger and older individuals are compared (reviewed in [31]). Further analysis of the aging-associated CpG sites has revealed that several of them possess an intriguing feature wherein the level of DNA methylation changes in a clock-like fashion, i.e., correlating with the calendar age of an individual [7]. Using several publicly available Illumina 27 and 450 K methylation array datasets, Horvath established an algorithm based on the weighted average of the DNA methylation levels in 353 CpG sites [7]. This algorithm, *the epigenetic clock*, yields an estimate of the individual's DNA methylation age that generally correlates well with a healthy individual's calendar age and is claimed to be a successful predictor in most cell types and tissues. The acceleration of epigenetic age can be evaluated by calculating the deviation of calendar age from epigenetic age (Δ AGE). A rapidly increasing number of reports have identified factors and phenotypes that have an accelerating effect on the ticking rate of the epigenetic clock, indicating acceleration of biological aging. Examples of these include infection with HIV [9] or cytomegalovirus [14] and reduced mental and physical fitness in elderly individuals [16]. Additionally, one report demonstrates that accelerated epigenetic aging is associated with a shortened lifespan during follow-up [17]. Base level of Δ AGE has been shown to be fixed before adulthood after which there is very little variation [13].

Obesity has several adverse effects on the body, leading to increased atherosclerosis, tumorigenesis, neurodegeneration, and type 2 diabetes, i.e., conditions that are classical features of advanced aging (reviewed in [4]). It has also been demonstrated that obesity is associated with a shortened lifespan [4]. Interestingly, although the health risks associated with overweight and obesity are well established [23], there is some controversy surrounding the issue of how this applies to older individuals. According to the obesity paradox, obese elderly people have better outcomes in conditions such as hypertension, coronary artery disease, peripheral artery disease, and congestive cardiac failure than normal-weight individuals of the same age [2]. Additionally,

significant decreases in the mortality of obese individuals with heart failure have been reported compared to their normal-weight counterparts [27].

To characterize the significance of obesity in epigenetic aging, we analyzed the association between BMI and epigenetic age in three age groups: young adults, middle-aged, and nonagenarian individuals.

Methods

Study populations

The data from two different study populations were studied to analyze the relationship between the BMI and epigenetic age in three age groups: young, middle-aged, and nonagenarian individuals (Table 1). The young and middle-aged groups consisted of matched samples ($n = 183$) with data from two time points that were 25 years apart, and the nonagenarian group included 119 individuals (women $n = 87$, men $n = 32$) from another study. For the sake of clarity, the age groups are referred to as YFS1986 (the young group), YFS2011 (the middle-aged group), and the V90+ (the nonagenarian group) (for a more detailed description of the sample populations, see Table 1). The YFS1986 and YFS2011 age groups consisted of the individuals

Table 1 Data summary of the cohorts used in this study. Data includes mean, standard deviation, and range of calendar age in years, epigenetic age in years, Δ AGE (difference between chronological age and epigenetic age) in years, and BMI in kg/m²

	YFS1986 ^a ($n = 183$) Young adults	YFS2011 ^b ($n = 183$) Middle-aged	Vitality 90+ ($n = 119$) Nonagenarians
Calendar age			
Mean	19.2	44.2	90
Standard deviation	3.25	3.25	0 ^c
Range	15–24	40–49	90–90 ^c
Epigenetic age			
Mean	17.5	43.6	76.3
Standard deviation	4.36	4.48	6.17
Range	4.87–29.71	33.23–61.37	62–101
Δ AGE			
Mean	1.74	0.60	13.71
Standard deviation	2.96	3.70	6.17
Range	–6–10.35	–12.53–9.31	–11–28
BMI			
Mean	21.32	26.13	26.38
Standard deviation	2.74	4.58	4.86
Range	16.75–34.32	18.87–45.18	13.67–38.26

^aYoung Finns Study, samples collected in 1986

^bYoung Finns Study, samples collected in 2011

^cAll individuals in the Vitality 90+ Study were 90 years old

from the Cardiovascular Risk in Young Finns Study (YFS), an ongoing follow-up study with data collected at several time points from childhood to middle age (for a more detailed description of the YFS cohort, see [25]). The YFS1986 and YFS2011 samples collected in 1986 and 2011, respectively, included 183 individuals (women $n = 111$, men $n = 72$). The sample size was determined by the availability of BMI and DNA methylation data. The Young Finns Study was approved by the local ethics committees (the University Hospitals of Helsinki, Turku, Tampere, Kuopio, and Oulu) and conducted according to the guidelines of the Declaration of Helsinki. All participants gave their written informed consent.

The contribution for the nonagenarian age group was provided by the participants of the V90+ study, an ongoing prospective population-based study consisting of individuals aged 90 years and older and living in the city of Tampere, Finland (for the description of the recruitment and characterization of the participants, see [5]). All individuals provided written informed consent, and the research protocol followed the guidelines of the Declaration of Helsinki. The V90+ study samples were collected in 2010. The mean ages of the individuals in the three age groups were 19.2 (YFS1986), 44.2 (YFS2011), and 90.0 (V90+) years. All individuals included in this study were selected from the YFS and Vitality 90+ study populations based on the availability of the BMI and DNA methylation array data.

Sample collection

In the Vitality 90+ study, blood samples were drawn into EDTA tubes by properly trained medical during home visits. All the samples were collected between 8 and 12 a.m. and leukocyte separation was performed directly with a Ficoll-Paque density gradient (Ficoll-Paque™ Premium, cat no. 17-5442-03, GE Healthcare Bio-Sciences AB, Uppsala, Sweden). Following the separation, the peripheral blood mononuclear cell (PBMC) layers were collected, and DNA was extracted using the spin protocol for the QIAamp DNA Mini kit (Qiagen, CA, USA), according to the manufacturer's instructions. The DNA concentration was assessed using a Qubit dsDNA HS assay (Invitrogen, Eugene, OR, USA), and the quality was checked with a NanoDrop (Thermo Scientific, USA). Without the availability of separated PBMCs, whole blood leukocytes (WBL) were used instead of the YFS samples. The WBL DNA of the YFS cohorts was obtained from blood samples stored in EDTA using a Wizard® Genomic DNA Purification Kit (Promega Corporation, Madison, WI, USA) according to the manufacturer's instructions (for more detailed sample collection details of YFS, see Nuotio et al. [21]). The quality and concentration of the WBL DNA was assessed using a

NanoDrop. For the YFS1986 samples, the intactness of the DNA was assessed by performing PCR for the amelogenin gene (*AMELX* and *AMELY*).

DNA methylation array

Methylation profiling of the samples in Vitality 90+ study and in YFS2011 was performed at the Institute for Molecular Medicine Finland (FIMM) Technology Centre, University of Helsinki. DNA (1 μ g) was used for the bisulfite conversion with the EZ-96 DNA Methylation Kit (Zymo Research, Irvine, CA, USA), according to the manufacturer's protocol. Converted DNA (4 μ l) was whole-genome amplified, enzymatically fragmented, and hybridized to the Infinium HumanMethylation450 BeadChip (Illumina Inc., CA, USA), covering sequences for the analysis of 485000 CpG sites. Samples were applied in the BeadChips in random order. Results were obtained using the iScan reader (Illumina Inc., San Diego, CA, USA). Methylation profiling of the samples in YFS from 1986 was performed at Helmholtz Zentrum, München, Germany, using the same methodology. The quality of the DNA methylation data was carefully inspected by standard examinations with principal component analysis (PCA) and visualizations with boxplots, density plots, and dotplots. The possible bias of batch effects was later addressed by normalizing the DNA methylation data using the BMIQ function that is implemented in the DNAmAge algorithm, as described below. The overall quality control was supported by technical replicates and gender prediction based on the X chromosome methylation (Additional file 1: Fig. S1).

Quantification of the epigenetic age and deviation of the calendar age

Obtained probe intensities were transformed to β values with a standard equation in which β is the ratio of the methylated probe (m) intensities to the overall intensities ($m + u + \alpha$, where α is the constant offset, 100, and u is the unmethylated probe intensity). The resulting β values ranged from 0 (completely unmethylated, 0) to 1 (fully methylated, 100%). Principal component analysis (PCA) and visualization of the methylation intensity values were used to assess the quality control. β values of the selected probes were used as the input for the calculating the epigenetic age (<https://dnamage.genetics.ucla.edu/home>) [7]. Normalization of the batch effects was performed with the BMIQ function implemented in the DNAmAge algorithm. The deviation of the estimated epigenetic age from the actual calendar age was calculated by subtracting the former from the latter, yielding Δ AGE (calendar age minus epigenetic age = delta age, Δ AGE).

Correlation analysis of the BMI and Δ AGE

The association between the BMI and Δ AGE was investigated using Spearman's rank correlation separately in each age group. Confounding factors in the association between the BMI and Δ AGE in the middle-aged group were addressed with a linear regression model (stepwise, criteria = PIN(0.05) POUT(0.10)). The following available variables were used in the regression model to predict the Δ AGE: BMI, alcohol consumption, smoking, and gender. The prevalence of chronic diseases and medications was well below 10%; as a result, they were not included in the model.

Results

The mean BMI levels of the young adults, middle-aged, and nonagenarians were 21.32, 26.13, and 26.38 kg/m², respectively. The mean epigenetic ages of these subpopulations were 17.5, 43.6, and 76.3 years (Table 1). The mean deviations of the epigenetic age from the calendar age, the Δ AGE, were 1.74, 0.60, and 13.71 years, respectively. The association between the BMI and Δ AGE in young and middle-aged individuals was analyzed with matched samples at 25-year interval time points (samples collected in 1986 and 2011), and the mean calendar ages of the individuals in these consecutive time points were 19.2 and 44.2 years, respectively. The WBLs were used as a source of the DNA. The correlation of Δ AGE with BMI is shown in Fig. 1 (panel A, young adults; panel B, middle-aged). In the young adult subpopulation, the samples were collected in 1986, and there was no significant association between the Δ AGE and BMI ($r = -0.110$, $p = 0.138$), indicating that BMI did not alter the ticking rate of the epigenetic clock as these individuals entered into adulthood. The middle-aged subpopulation, however, had a significant inverse correlation between BMI and Δ AGE ($r = -0.281$, $p = 0.0001$), suggesting that higher BMI is associated with acceleration of epigenetic aging in middle-aged individuals. The gender did not affect this correlation; the result was also significant when performed according to gender (Additional file 2: Table S1 and Additional file 3: Fig. S2). Confounding factors were addressed with a linear regression model, and BMI was the single best predictor of the Δ AGE (Additional file 4: Table S2). Within the nonagenarian subpopulation, there was no significant association between the Δ AGE and BMI ($r = 0.115$, $p = 0.211$, and Fig. 2).

To understand the long-term effects of BMI, we analyzed the association between the change in BMI over a 25-year time range, as well as the Δ BMI (BMI in 2011 minus BMI in 1986) and Δ AGE in middle-aged individuals. Figure 3 shows a significant inverse correlation between the change in the BMI and Δ AGE ($r = -0.193$, $p = 0.009$), suggesting that the individual's current BMI

status is not the only factor affecting the epigenetic age and that increased epigenetic age is instead an outcome of weight gain over time. It should be noted, however, that only a few individuals showed a decrease in BMI between these years. As a result, this association mainly represents the effects of increasing BMI over time.

Discussion

Aging is an extremely complex and heterogenic phenomenon that is associated with a general decrease in several cellular and organ functions. Due to this heterogeneity, the actual calendar age of an individual seems to tell very little about what is actually going on inside the tissues and cells in terms of the aging process itself. This discrepancy has paved the way for the development of an aging biomarker that would estimate the state of one's aging process better than chronological age. One of the most recent approaches to identifying aging biomarkers is the epigenetic clock, which is based on the quantification of methylation states of the cytosine bases in the DNA. Since the discovery of the concept of an epigenetic clock [7], numerous studies have attempted to explain the factors involved in determining of one's epigenetic age.

Obesity is linked to aging as it is associated with certain age-related conditions such as diabetes [1] and shortening of the telomeres [29]. The role of BMI in the determination of life-span has been studied extensively. For example, analysis of the follow-up data of 900000 individuals (mean recruitment age 46 years, and mean age at death 67 years) indicated that the mortality was lowest at a BMI of approximately 22.5–25 kg/m² and higher; each 5 kg/m² increase in the BMI was associated with a 30% higher mortality and association could also be seen below the 22.5–25 kg/m² range [24]. Additionally, the length of the time spent in a high BMI state and lifetime peak BMI can have a positive association with mortality [19]. Obesity associated epigenetic changes have also been looked into. Some studies have reported that increased BMI is associated with hypermethylation of several CpG sites within the *HIF3A* gene [26] as well as hypermethylation of single CpG site in *TRIM3* gene and hypomethylation of single CpG site in *UBASH3A* gene [30]. Additionally, there are reports regarding association between global methylation levels of Alu-elements and BMI [20], and association between obesity and DNA methylation levels in leptin (*LEP*) and adiponectin (*ADIPOQ*) genes [11]. These obesity-related DNA methylation changes do not seem to overlap those seen in aging-associated changes [12, 18]. However, instead of focusing on single CpG site hypo- or hypermethylation events, we wanted to explore the relationship between overweight, as represented by BMI and the epigenetic age, an aging biomarker calculated using the methylation

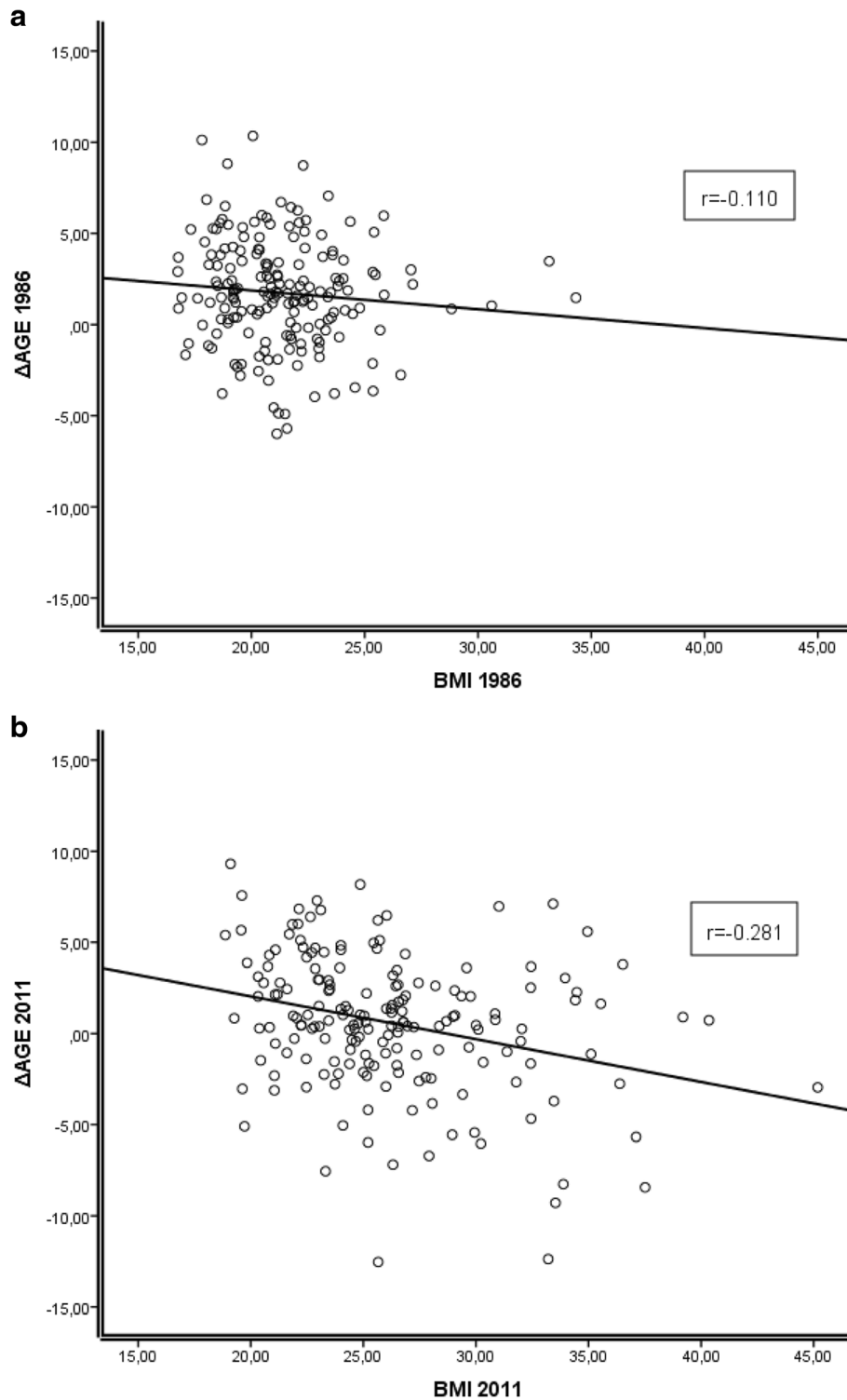


Fig. 1 a Association between Δ AGE (difference between chronological age and epigenetic age in years) and BMI in young adults of the Young Finns Study (mean age of 19.2 years). Association is non-significant ($r = -0.110$, $p = 0.138$). **b** Association between Δ AGE and BMI in middle-aged individuals of the Young Finns Study (mean age of 44.2 years, follow-up from Fig. 1a). Correlation is significant ($r = -0.281$, $p = 0.0001$)

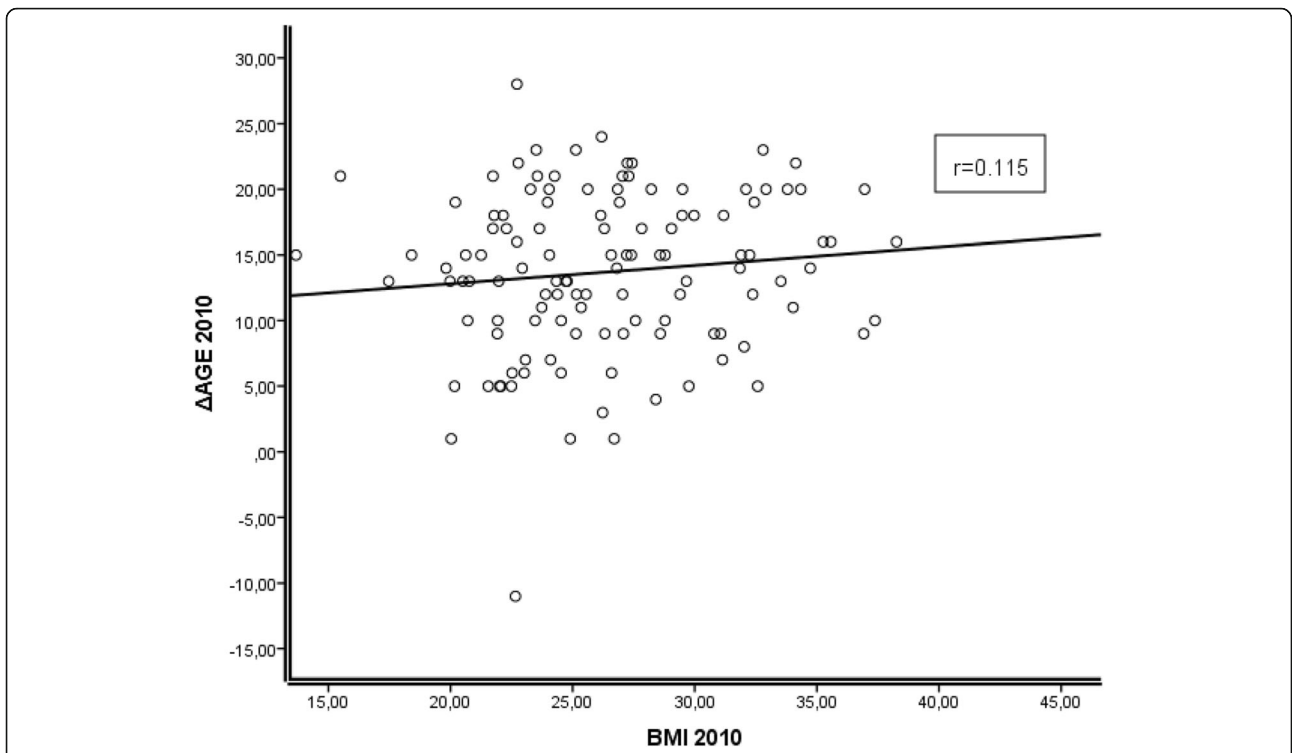


Fig. 2 Association between Δ AGE and BMI in nonagenarian individuals of the Vitality 90+ Study (Age of 90 years). Correlation is non-significant ($r = 0.115, p = 0.211$). However, it is noteworthy that the trend of correlation is opposite to corresponding ones of the young adults and middle-aged (Fig. 1a, b). This could be an indication of obesity paradox where higher BMI is beneficial for the elderly individuals

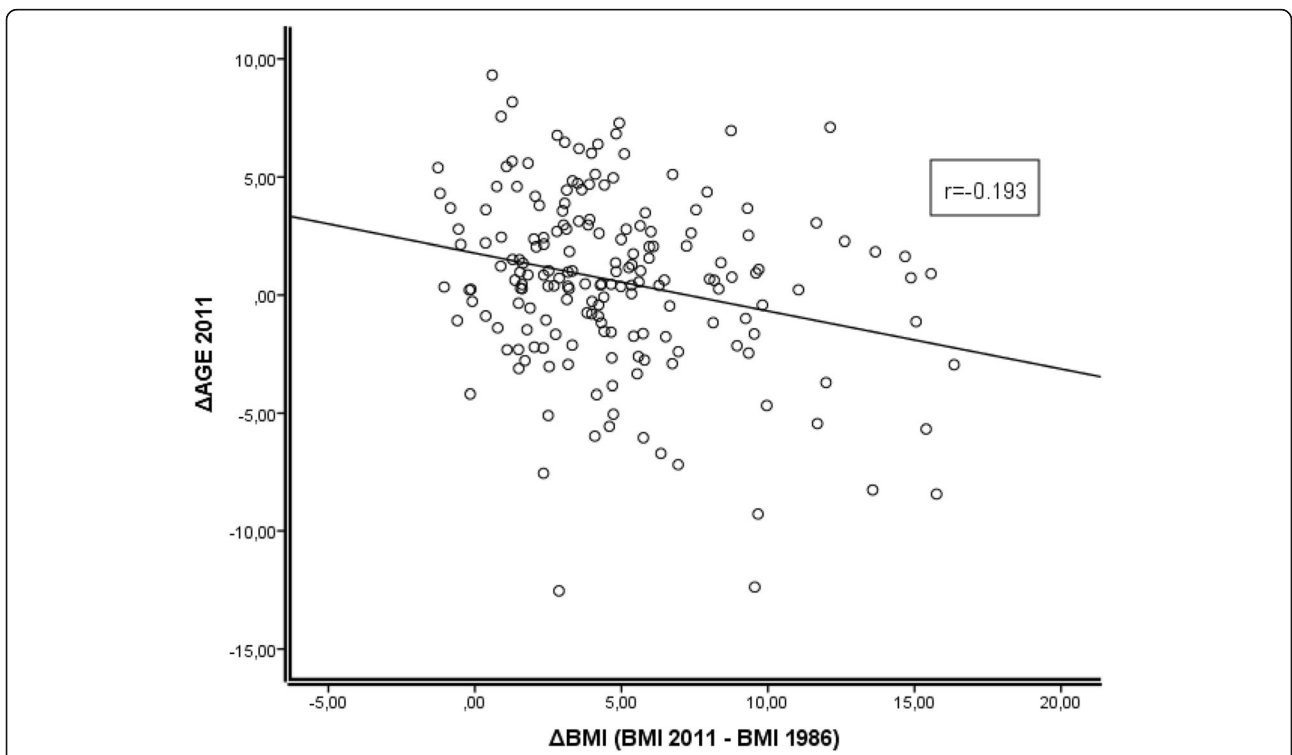


Fig. 3 Association between Δ AGE and change in BMI in a 25-year follow-up in middle-aged individuals of the Young Finns Study. Correlation is significant ($r = -0.193, p = 0.009$), indicating that increase in BMI has had an accelerating effect on epigenetic aging

status of multiple CpG sites. In this study, we investigated the association between BMI and epigenetic age in the blood cells of three different age groups, the young adults, the middle-aged, and the nonagenarians. We found that BMI is not associated with epigenetic aging in young adults, in the age range from 15 to 24, nor in nonagenarians, the individuals aged 90 years. In the middle-aged subpopulation, however, the BMI was inversely correlated with individual's Δ AGE. In addition, also the change in BMI over 25 years was similarly inversely correlated with one's Δ AGE at the later time point.

We did not observe the association between BMI and the acceleration of the epigenetic aging in young adults (Fig. 1a). It has been shown that epigenetic clock of the children is ticking relatively faster than that of adults because of the active, ongoing growth period [7]. Thus, organismal growth accompanied with the high number of cell divisions leads to logarithmic ratio of epigenetic age and calendar age. After the growth period is over, ticking rate of the epigenetic clock slows down to constant and increases linearly with calendar age [7]. Therefore, the finding that increased BMI has not accelerated the epigenetic aging of the young adults (mean age of 19.2 years) suggests that obesity-induced acceleration of the epigenetic age takes place over time, and this population has not been exposed to it long enough so that the effect could be observed. It is also possible that the effect of increased BMI is minor when compared to epigenetic aging induced by normal growth, and therefore cannot be distinguished.

Epigenetic aging of the older study populations have also been looked into. It has been shown that extremely old individuals, such as centenarians, possess significantly lower epigenetic ages than what their calendar age would suggest [10]. The older individuals in our study were represented by the nonagenarians and similar trend was observed, their epigenetic age being on average 13.7 years lower than their calendar age. This is probably due to the opposite of what happens during the active growth period, as the regenerative capacity of the body diminishes [22] and the epigenetic clock does not keep up. Additionally, the DNA methylomes of nonagenarians have been exposed to environmental factors for decades and global aging-associated hypo- and hypermethylation of the CpG sites could potentially distort the accuracy of DNAmAge algorithm. However, it is also possible that the nonagenarians are selected in a way that those individuals with higher epigenetic ages have already died, and those with relatively lower epigenetic ages are overrepresented in our study population.

We did not observe significant association between individual's BMI and epigenetic age in the nonagenarian study population. Interestingly, however, the correlation

trend of these variables was opposite to that seen in the younger and middle-aged individuals, meaning that higher BMI corresponded to higher Δ AGE, and thus lower epigenetic age. Although not significant, this discrepancy could be a manifestation of obesity paradox which suggests that overweight could be in fact beneficial in very old individual, as opposed to young people for whom it is a risk factor for morbidity and mortality (reviewed in [2]). In nonagenarians, low BMI, waist-to-hip ratio, and waist circumference have been shown to predict mortality [15].

The main finding in this report suggests that increased BMI is associated with accelerated epigenetic aging in the blood cells of middle-aged individuals (Fig. 1b). The mechanisms connecting the numerous metabolic changes induced by obesity to the process of DNA methylation can only be proposed at present. Additionally, the role of the obesity-induced degenerative disease processes cannot be excluded. However, as the individuals of the affected subpopulation are not very old (still <50 years of age), their role is probably minor. Another key finding of this study is the observation that the BMI changes in the 25-year range, from early adulthood to middle age, can accelerate the ticking rate of epigenetic clock, indicating that the clock itself is adjustable (Fig. 3). It should be noted that only a few individuals in this study demonstrated a decrease in the BMI during the 25-year follow-up; therefore, its effect could not be analyzed. This information would be decisive for understanding the basic mechanisms of the BMI/epigenetic clock correlation. Implications of accelerated epigenetic aging are beyond the scope of this article, but according to literature, these epigenetic alterations could be the manifestations of accumulated DNA damage over time [3], establishing the link between epigenetic and calendar age. If this is the case, it seems implausible that epigenetic changes could be reversed by lowering the BMI. However, additional follow-up studies are needed to investigate the association between long-term weight reduction and epigenetic aging. Understanding this association could offer important information for planning various weight reduction or caloric restriction protocols.

Horvath et al. [8] observed that obesity accelerates epigenetic aging of the human liver. However, in contrast to the data presented here, they did not observe this phenomenon in DNA derived from blood cells. As the methodology (source of DNA, methylation assay, and calculation algorithm) is exactly the same, it is likely that this discrepancy is due to the differences in the study cohorts. Our study cohort is very homogeneous, consisting of individuals with the same ethnic and genetic backgrounds, which may reduce the effect of possible confounders. Moreover, the possibility for follow-up analysis

increases the reliability of the analysis. It is evident that very large, well-characterized population cohorts are required to reveal the factors that influence the ticking rate of the epigenetic clock. The limitations of our study include the restricted sample size and slightly differing source of DNA between the YFS (whole blood) and V90 (PBMC) study populations. However, based on our earlier results, these limitations do not seem to have a major effect [13].

Conclusions

Overall, our results suggest that accelerated epigenetic aging could be due to the active growth or regeneration of tissues. This is evident in the children undergoing the active growth phase, when their epigenetic clock ticks faster [7]. In elderly individuals, the regeneration capacity of the tissues and stem cells decreases, leading to slower ticking of the clock. Somewhere, in between these two age periods, when the baseline epigenetic aging is linear, adding fat tissue could be regarded as growth. Hence, the underlying epigenetic control mechanisms might be the same as in childhood. The fact that the association between BMI and epigenetic age can only be observed in the middle-aged group, does not exclude the possibility that this association could be present throughout the human lifespan; it might just be masked by confounding factors in young adults and nonagenarian individuals.

Regarding future studies, it would be interesting to investigate whether increased muscle mass is associated with accelerated epigenetic aging, as it also involves proliferation of the tissues outside of the active growth phase. Also, further studies are needed to establish the more precise mechanisms that operate behind the observed association between epigenetic age and BMI.

Additional files

Additional file 1: Figure S1. The quality control of the DNA methylation of old DNA samples. YFS1986 samples (young adults) were collected 30 years ago, and the methylation profiling was performed in different facility than others. To ensure that these samples did not include technical biases, we compared the mean methylation of X chromosome in YFS1986 (X axis) and YFS2011 (Y axis) follow-up samples. These two cohorts cannot be distinguished from the plot, and only gender stands out, as expected in the case of DNA methylation. (DOCX 59 kb)

Additional file 2: Table S1. Gender-specific correlations of Δ AGE and BMI in three age groups: the young adults (BMI1986 and Δ AGE 1986), the middle-aged (BMI 2011 and Δ AGE 2011), and the nonagenarians (BMI 2010 and Δ AGE 2010). The correlation is significant only in middle-aged males and females. (XLSX 10 kb)

Additional file 3: Figure S2. Gender-specific correlations of Δ AGE and BMI in middle-aged individuals. In panel **A**, scatterplot of Δ AGE and BMI in middle-aged female individuals ($r=-0.265$, $p=0.05$). In panel **B**, scatterplot of Δ AGE and BMI in middle-aged male individuals ($r=-0.270$, $p=0.022$). (DOCX 51 kb)

Additional file 4: Table S2. The linear regression model explaining the variation in Δ AGE of middle-aged adults. We used BMI, gender, smoking, and alcohol consumption as predictors. Of these, the BMI was the best independent predictor of Δ AGE ($p=0.002$). The regression method was stepwise, criteria=PIN(0.05) POUT(0.10). (DOCX 14 kb)

Acknowledgments

We would like to thank Sinikka Repo-Koskinen and Nina Peltonen for their skillful technical assistance.

Funding

This work was supported by grants from the Academy of Finland [132704 to MH], Competitive Research Fund of Pirkanmaa Hospital District [9 M017, 9 N013 to MH], and Finnish Cultural Foundation, Pirkanmaa Regional Fund [NM]. The Young Finns Study has been financially supported by the Academy of Finland: grants 286284, 134309 (Eye), 126925, 121584, 124282, 129378 (Salve), 117787 (Gendi), and 41071 (Skidi); the Social Insurance Institution of Finland; Kuopio, Tampere and Turku University Hospital Medical Funds (grant X51001); Juho Vainio Foundation; Paavo Nurmi Foundation; Finnish Foundation for Cardiovascular Research; Finnish Cultural Foundation; Tampere Tuberculosis Foundation; Emil Aaltonen Foundation; Yrjö Jahnsson Foundation; Signe and Ane Gyllenberg Foundation; and Diabetes Research Foundation.

Availability of data and materials

Not applicable.

Authors' contributions

TN was primarily responsible for writing the manuscript. JJ, TN, SM, and NM performed the experiments. TN and LK processed the data and performed statistical analyses. AH, MJ, MK, and OR were responsible for recruiting the study population. MH and TL provided the study reagents and materials. TN, SM, LK, JJ, and MH contributed to the study design. All authors contributed to the writing of the manuscript and have read and approved the final manuscript.

Competing interests

The authors declare that they have no competing interests.

Consent for publication

Not applicable.

Ethics approval and consent to participate

The Young Finns Study was approved by the local ethics committees (the University Hospitals of Helsinki, Turku, Tampere, Kuopio, and Oulu) and conducted following the guidelines of the Declaration of Helsinki. All participants gave their written informed consent. The Vitality 90+ Study was approved by the local ethics committee of the University Hospital of Tampere. All individuals provided written informed consent, and the research protocol followed the guidelines of the Declaration of Helsinki.

Author details

¹Department of Microbiology and Immunology, School of Medicine, University of Tampere, Tampere, Finland. ²Gerontology Research Center, Tampere, Finland. ³Research Centre of Applied and Preventive Cardiovascular Medicine and the Department of Clinical Physiology and Nuclear Medicine, University of Turku and Turku University Hospital, Turku, Finland. ⁴Department of Clinical Physiology, Tampere University Hospital and University of Tampere, School of Medicine, Tampere, Finland. ⁵Department of Clinical Chemistry, School of Medicine, University of Tampere, Tampere, Finland. ⁶School of Health Sciences, University of Tampere, Tampere, Finland. ⁷Fimlab laboratories, Tampere, Finland.

Received: 27 July 2016 Accepted: 9 December 2016

Published online: 14 February 2017

References

- Ahima RS. Connecting obesity, aging and diabetes. *Nat Med.* 2009;15:996–7.
- Chapman IM. Obesity paradox during aging. *Interdiscip Top Gerontol.* 2010;37:20–36.

3. Ding N, Bonham EM, Hannon BE, et al. Mismatch repair proteins recruit DNA methyltransferase 1 to sites of oxidative DNA damage. *J Mol Cell Biol.* 2016;8:244–54.
4. Fontana L, Hu FB. Optimal body weight for health and longevity: bridging basic, clinical, and population research. *Aging Cell.* 2014;13:391–400.
5. Goebeler S, Jylha M, Hervonen A. Medical history, cognitive status and mobility at the age of 90. A population-based study in Tampere, Finland. *Aging Clin Exp Res.* 2003;15:154–61.
6. Heyn H, Li N, Ferreira HJ, et al. Distinct DNA methylomes of newborns and centenarians. *Proc Natl Acad Sci U S A.* 2012;109:10522–7.
7. Horvath S. DNA methylation age of human tissues and cell types. *Genome Biol.* 2013;14:R115.
8. Horvath S, Erhart W, Brosch M, et al. Obesity accelerates epigenetic aging of human liver. *Proc Natl Acad Sci U S A.* 2014;111:15538–43.
9. Horvath S, Levine AJ. HIV-1 infection accelerates age according to the epigenetic clock. *J Infect Dis.* 2015;212:1563–73.
10. Horvath S, Pirazzini C, Bacalini MG, et al. Decreased epigenetic age of PBMCs from Italian semi-supercentenarians and their offspring. *Aging (Albany NY).* 2015;7:1159–70.
11. Houde AA, Legare C, Biron S, et al. Leptin and adiponectin DNA methylation levels in adipose tissues and blood cells are associated with BMI, waist girth and LDL-cholesterol levels in severely obese men and women. *BMC Med Genet.* 2015;16:29. 015-0174-1.
12. Kananen L, Marttila S, Nevalainen T, et al. Aging-associated DNA methylation changes in middle-aged individuals: the Young Finns study. *BMC Genomics.* 2016;17:103. 016-2421-z.
13. Kananen L, Marttila S, Nevalainen T, et al. The trajectory of the blood DNA methylome ageing rate is largely set before adulthood: evidence from two longitudinal studies. *Age (Dordr).* 2016;38:65. 016-9927-9. Epub 2016 Jun 14.
14. Kananen L, Nevalainen T, Jylhava J, et al. Cytomegalovirus infection accelerates epigenetic aging. *Exp Gerontol.* 2015;72:227–9.
15. Lisko I, Tainen K, Stenholm S, et al. Body mass index, waist circumference, and waist-to-hip ratio as predictors of mortality in nonagenarians: the Vitality 90+ Study. *J Gerontol A Biol Sci Med Sci.* 2011;66:1244–50.
16. Marioni RE, Shah S, McArae AF, et al. DNA methylation age of blood predicts all-cause mortality in later life. *Genome Biol.* 2015;16:25. 015-0584-6.
17. Marioni RE, Shah S, McArae AF, et al. The epigenetic clock is correlated with physical and cognitive fitness in the Lothian Birth Cohort 1936. *Int J Epidemiol.* 2015;44:1388–96.
18. Marttila S, Kananen L, Hayrynen S, et al. Ageing-associated changes in the human DNA methylome: genomic locations and effects on gene expression. *BMC Genomics.* 2015;16:179. 015-1381-z.
19. Mehta NK, Stenholm S, Elo IT, et al. Weight histories and mortality among Finnish adults: the role of duration and peak body mass index. *Epidemiology.* 2014;25:707–10.
20. Na YK, Hong HS, Lee DH, et al. Effect of body mass index on global DNA methylation in healthy Korean women. *Mol Cells.* 2014;37:467–72.
21. Nuotio J, Oikonen M, Magnussen CG, et al. Cardiovascular risk factors in 2011 and secular trends since 2007: the Cardiovascular Risk in Young Finns Study. *Scand J Public Health.* 2014;42:563–71.
22. Oh J, Lee YD, Wagers AJ. Stem cell aging: mechanisms, regulators and therapeutic opportunities. *Nat Med.* 2014;20:870–80.
23. Pi-Sunyer X. The medical risks of obesity. *Postgrad Med.* 2009;121:21–33.
24. Collaboration PS, Whitlock G, Lewington S, et al. Body-mass index and cause-specific mortality in 900 000 adults: collaborative analyses of 57 prospective studies. *Lancet.* 2009;373:1083–96.
25. Raitakari OT, Juonala M, Ronnema T, et al. Cohort profile: the cardiovascular risk in Young Finns Study. *Int J Epidemiol.* 2008;37:1220–6.
26. Richmond RC, Sharp GC, Ward ME, et al. DNA methylation and BMI: investigating identified methylation sites at HIF3A in a causal framework. *Diabetes.* 2016;65:1231–44.
27. Shah R, Gayat E, Januzzi Jr JL, et al. Body mass index and mortality in acutely decompensated heart failure across the world: a global obesity paradox. *J Am Coll Cardiol.* 2014;63:778–85.
28. Sprott RL. Biomarkers of aging and disease: introduction and definitions. *Exp Gerontol.* 2010;45:2–4.
29. Valdes AM, Andrew T, Gardner JP, et al. Obesity, cigarette smoking, and telomere length in women. *Lancet.* 2005;366:662–4.
30. Wang X, Zhu H, Snieder H, et al. Obesity related methylation changes in DNA of peripheral blood leukocytes. *BMC Med.* 2010;8:87. 7015-8-87.
31. Zampieri M, Ciccarone F, Calabrese R, et al. Reconfiguration of DNA methylation in aging. *Mech Ageing Dev.* 2015;151:60–70.

Submit your next manuscript to BioMed Central and we will help you at every step:

- We accept pre-submission inquiries
- Our selector tool helps you to find the most relevant journal
- We provide round the clock customer support
- Convenient online submission
- Thorough peer review
- Inclusion in PubMed and all major indexing services
- Maximum visibility for your research

Submit your manuscript at
www.biomedcentral.com/submit

