

ERRATUM

Open Access



# Erratum to: Novel sorafenib analogues induce apoptosis through SHP-1 dependent STAT3 inactivation in human breast cancer cells

Chun-Yu Liu<sup>1,2,3,4†</sup>, Ling-Ming Tseng<sup>2,5†</sup>, Jung-Chen Su<sup>1</sup>, Kung-Chi Chang<sup>1,3,4</sup>, Pei-Yi Chu<sup>6</sup>, Wei-Tien Tai<sup>7,8</sup>, Chung-Wai Shiau<sup>1\*</sup> and Kuen-Feng Chen<sup>7,8\*</sup>

## Erratum

In the published article [1], the authors noticed an error to Fig. 1e in which the MTT curve of drug treatments (sorafenib, SC-1 and SC-43) in SK-BR3 cells was erroneously put as the same with that of HCC-1937 cells.

The correct version of Fig. 1 (including correct Fig. 1e) is included in this erratum.

## Author details

<sup>1</sup>Institute of Biopharmaceutical Sciences, National Yang-Ming University, No. 155 Sec. 2, Li-Nong Street, Taipei 112, Taiwan. <sup>2</sup>School of Medicine, National Yang-Ming University, No. 155, Sec. 2, Li-Nong Street, Taipei 112, Taiwan. <sup>3</sup>Division of Hematology and Oncology, Taipei Veterans General Hospital, No. 201, Sec. 2, Shih-Pai Road, Taipei 112, Taiwan. <sup>4</sup>Department of Medicine, Taipei Veterans General Hospital, No. 201, Sec. 2, Shih-Pai Road, Taipei 112, Taiwan. <sup>5</sup>Department of Surgery, Taipei Veterans General Hospital, No. 201, Sec. 2, Shih-Pai Road, Taipei 112, Taiwan. <sup>6</sup>Department of Pathology, St. Martin De Porres Hospital, No. 565, Sec. 2, Daya Road, Chiayi 600, Taiwan. <sup>7</sup>Department of Medical Research, National Taiwan University Hospital, No. 7, Chung-Shan South Road, Taipei 100, Taiwan. <sup>8</sup>National Center of Excellence for Clinical Trial and Research, National Taiwan University Hospital, No. 7, Chung-Shan South Road, Taipei 100, Taiwan.

Received: 3 January 2017 Accepted: 3 January 2017

Published online: 11 January 2017

## Reference

1. Liu CY, et al. Novel sorafenib analogues induce apoptosis through SHP-1 dependent STAT3 inactivation in human breast cancer cells. *Breast Cancer Res.* 2013;15:R63. doi:10.1186/bcr3457.

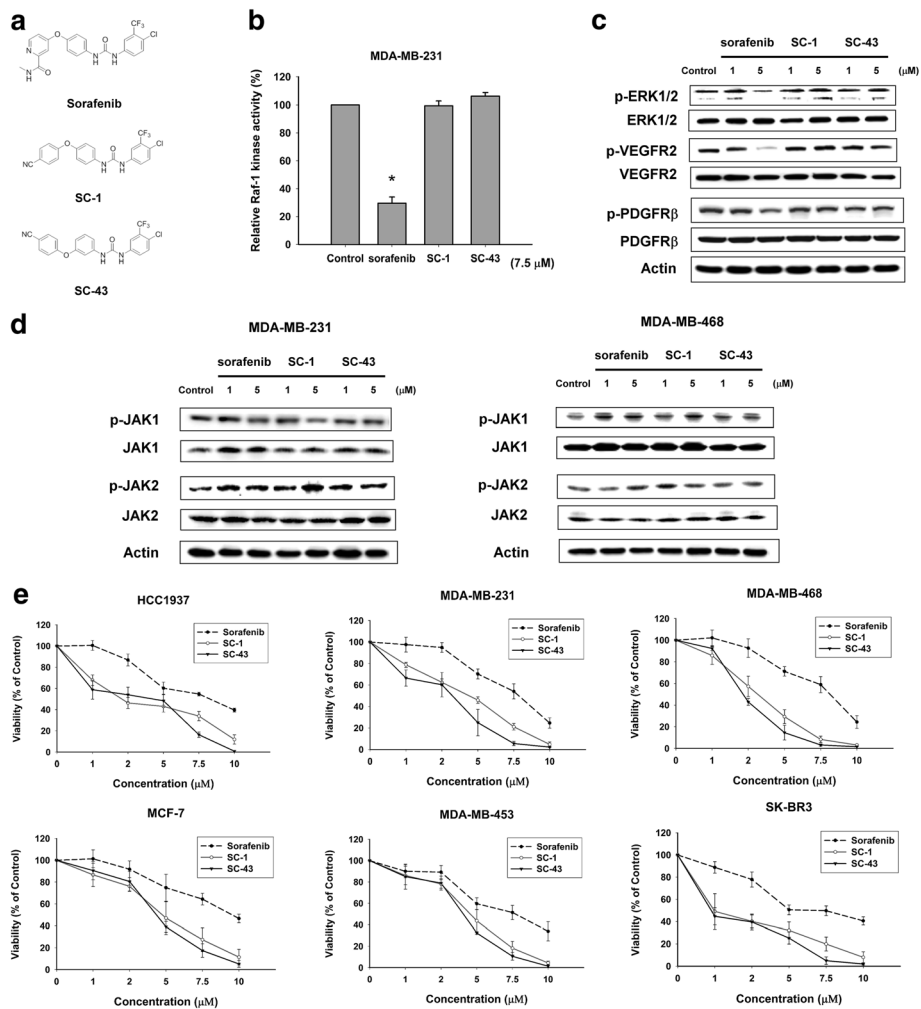
\* Correspondence: cwshiau@ym.edu.tw; kfchen1970@ntu.edu.tw

†Equal contributors

<sup>1</sup>Institute of Biopharmaceutical Sciences, National Yang-Ming University, No. 155 Sec. 2, Li-Nong Street, Taipei 112, Taiwan

<sup>7</sup>Department of Medical Research, National Taiwan University Hospital, No. 7, Chung-Shan South Road, Taipei 100, Taiwan





**Fig. 1** SC-1 and SC-43, without effects on raf-1 kinase activity, show more potent anti-proliferative activity than sorafenib in breast cancer cells. **a** chemical structures of sorafenib, SC-1 and SC-43. **b** effects of sorafenib, SC-1 and SC-43 on Raf-1 activity in MDA-MB-231 cells. Columns, mean (n = 3); bars, SD; \*P < 0.05 compared to control. **c** effects of sorafenib, SC-1 and SC-43 on the phosphorylation of ERK1/2, VEGFR2 and PDGFRβ in MDA-MB-231 cells. Cells were exposed to sorafenib, SC-1 or SC-43 at 1 and 5 μM for 12 hours. Data are representative of three independent experiments. **d** effects of sorafenib, SC-1 and SC-43 on the phosphorylation of STAT3 upstream kinases JAK1 and JAK2 in MDA-MB-231 (Left) and MDA-MB-468 cells (Right). Cells were exposed to sorafenib, SC-1 or SC-43 at 1 and 5 μM for 12 hours. Data are representative of three independent experiments. **e** dose-escalation effects of sorafenib, SC-1 and SC-43 on cell viability in six breast cancer cell lines. Cells were exposed to sorafenib, SC-1 or SC-43 at the indicated doses for 48 hours and cell viability was assessed by the MTT assay. Points, mean (n = 3); bars, SD. MTT, 3-(4,5-dimethylthiazol-2-yl)-2,5-diphenyltetrazolium bromide