

RESEARCH

Open Access



# Lung cancer mortality of residents living near petrochemical industrial complexes: a meta-analysis

Cheng-Kuan Lin<sup>1</sup>, Huei-Yang Hung<sup>2</sup>, David C. Christiani<sup>1,3</sup>, Francesco Forastiere<sup>4</sup> and Ro-Ting Lin<sup>5\*</sup> 

## Abstract

**Background:** Lung cancer, as the leading cause of cancer mortality worldwide, has been linked to environmental factors, such as air pollution. Residential exposure to petrochemicals is considered a possible cause of lung cancer for the nearby population, but results are inconsistent across previous studies. Therefore, we performed a meta-analysis to estimate the pooled risk and to identify possible factors leading to the heterogeneity among studies.

**Methods:** The standard process of selecting studies followed the Cochrane meta-analysis guideline of identification, screening, eligibility, and inclusion. We assessed the quality of selected studies using the Newcastle-Ottawa scale. Reported point estimates and 95% confidence intervals were extracted or calculated to estimate the pooled risk. Air quality standards were summarized and treated as a surrogate of exposure to air pollution in the studied countries. Funnel plots, Begg's test and Egger's test were conducted to diagnose publication bias. Meta-regressions were performed to identify explanatory variables of heterogeneity across studies.

**Results:** A total of 2,017,365 people living nearby petrochemical industrial complexes (PICs) from 13 independent studied population were included in the analysis. The pooled risk of lung cancer mortality for residents living nearby PICs was 1.03-fold higher than people living in non-PIC areas (95% CI = 0.98–1.09), with a low heterogeneity among studies ( $I^2 = 25.3\%$ ). Such effect was stronger by a factor of 12.6% for the year of follow-up started 1 year earlier ( $p$ -value = 0.034).

**Conclusions:** Our meta-analysis gathering current evidence suggests only a slightly higher risk of lung cancer mortality among residents living nearby PICs, albeit such association didn't receive statistically significance. Reasons for higher risks of early residential exposure to PICs might be attributable to the lack of or less stringent air pollution regulations.

**Keywords:** Lung cancer, Lung neoplasm, Petrochemical, Refinery, Petroleum, Oil and gas industry, Meta-analysis

## Background

Lung cancer is the leading cause of cancer deaths globally [1]. The Global Burden of Disease Study estimated that 1.7 million people died from lung cancer in 2015 [1]. Although tobacco smoking acts as one of the major risk factors for the disease [2, 3], there is still a considerable fraction of lung cancer mortality that remains unexplained [4]. This is particularly noticeable in many high-income countries, which showed an apparent trend of decrease in

the smoking prevalence [5]. Therefore, research in the past two decades has focused on environmental determinants of lung cancer [4, 6].

Petrochemical manufacturing industry, defined as petroleum refining (Standard Industrial Classification code [SIC] 2911) or industrial organic chemicals manufacturing (SIC 2869), involves processes that produce and potentially emit hazardous chemicals into the surrounding air, soil, and water. These petrochemical manufacturing factories are usually clustered in an industrial area together with other manufacturing processes or industry, such as steel, coking, and thermoelectric plants [7, 8], and called petrochemical industrial complexes (PIC). Several

\* Correspondence: roting@mail.cmu.edu.tw

<sup>5</sup>Department of Occupational Safety and Health, College of Public Health, China Medical University, 91 Hsueh-Shih Road, Taichung 40402, Taiwan  
Full list of author information is available at the end of the article

studies have detected environmental air pollutants near petrochemical manufacturing plants [9–12] and also after occasional fire accidents at petrochemical plants [13]. Long-term exposure to the poor air quality, as well as radon, chemicals, and arsenic compounds among residents living near petrochemical manufacturing complexes raised general awareness and the need to understand the possible adverse health effects among nearby residents [4, 14].

Several epidemiological studies have explored associations between the PICs and lung cancer risks of nearby people. Given high public concerns of health, the US started several investigations of suspected cancer risks for people living nearby PICs back to the 1970s [15–17]. For example, US white males living in petroleum industry counties had 1.10- to 1.17-fold higher risks of lung cancer mortality than males in other counties [17]. Subsequent studies in Italy and UK also revealed similar results with relative risks of 1.26 and 1.04, respectively, among white females [7, 8]. Fast-growing economies in Asia stimulated by the increasing demand for petrochemicals in manufacturing sectors also faced corresponding increases of lung cancer mortalities among residents nearby PICs [18]. However, several studies reported different results. For instance, Tsai and colleagues reported that male residents living in Louisiana's Industrial Corridor had lower risks of lung cancer compared to other Louisiana citizens, even after adjusting for age [19]. Similarly, Simonsen and colleagues reported that the risk of lung cancer was not elevated significantly in accordance with the residence proximity to the industrial area [20].

Due to the inconsistent results, our study aimed to estimate lung cancer mortality risk associated with the PICs by combining cross-country data from different studies via a systematic review and meta-analysis.

## Methods

### Data source and study selection

We selected exclusively articles from PubMed, Cochrane Library, Web of Science, Science Direct, and other sources that published before July 11, 2017. We used "*(Lung cancer OR Lung neoplasm) AND (Refinery OR Petroleum OR Petrochemical OR Oil and Gas Industry)*" as the search term. Two researchers—HY Hung and RT Lin—selected independently articles that met the inclusion and exclusion criteria as below.

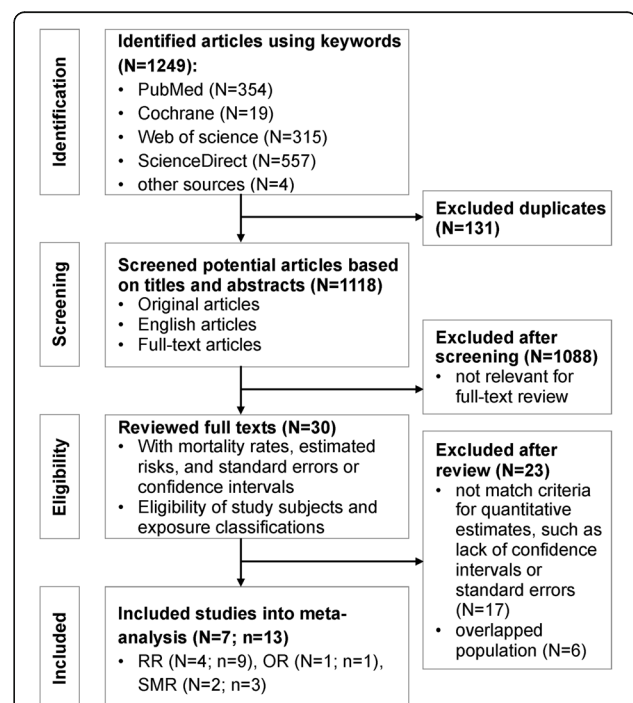
### Inclusion and exclusion criteria

The inclusion criteria were: (1) original articles that clearly defined exposure group as residents living nearby PICs; (2) original articles that clearly defined lung cancer mortality according to International Classification of Diseases (ICD); (3) original articles that reported either

confidence intervals (CI), standard errors (SE), or both; and (4) original articles that were written in English and full-texts were available. The exclusion criteria were: (1) studies with subjects overlapped with other publication; (2) studies that focused on occupational exposure in petrochemical plants only; and (3) studies that reported lung cancer incidence only and lack of mortality data.

### Review process and data extraction

Figure 1 shows the selection process of the articles, including four steps: identification, screening, eligibility, and included. First, we identified 1249 articles from library databases and excluded 131 duplicated articles. Second, we screened articles by titles and abstracts. We chose 30 of them as relevant to our study objective for full-text review. Third, we carefully reviewed and checked whether those articles clearly defined exposure and health outcome and also reported estimates and CI or SE. Considering that a study population might appear in different articles, we selected the latest article to avoid bias towards the specific population. Finally, we included seven articles that reported 13 estimates for meta-analysis: three articles reporting sex-specific mortality rate ratios of lung cancer [7, 18, 21]; one article reporting sex-specific age-adjusted mortality rates of industrial corridors and Louisiana, respectively [19]; one article



**Fig. 1** Flow of systematic literature search on lung cancer mortality for residents living nearby petrochemical sites. N = number of studies; n = number of estimates included into meta-analysis; RR = relative risk (rate ratio or risk ratio); OR = odds ratio; SMR = standardized mortality ratio

reporting odds ratios for both sexes combined [22]; one article reporting standardized mortality ratios by sex [8] and another one reporting standardized mortality ratios sex combined [23]. The ratio of Belli's study was regarded as for males in subgroup analysis because male accounted for 84% of the study group [22].

Since lung cancer mortalities were less than  $10^{-3}$  per year [24], we could appropriately interpret estimated odds ratios as relative risks [25, 26]. The adjusted standardized mortality ratios could be interpreted as relative risks as well because the estimates were derived from the comparison to general population in Rome [8, 27].

For the study not reporting CI or SE [19], we estimated the variances and SE of  $\ln RR$  using following equations:

$$\begin{aligned} \text{Var}(\ln RR) &= \text{Var}(\ln R_1 + \ln R_0) \\ &= \text{Var}(\ln R_1) + \text{Var}(\ln R_0) \\ &= \left(\frac{1}{R_1}\right)^2 \times \text{Var}(R_1) + \left(\frac{1}{R_0}\right)^2 \times \text{Var}(R_0) \end{aligned} \quad (1)$$

$$\text{SE}(\ln RR) = \sqrt{\text{Var}(\ln RR)} \quad (2)$$

where  $\text{Var}(\ln RR)$  represents the variance of natural log of relative risks (RRs);  $R_1$  and  $R_0$  represents mortality rates of the studied group and the reference group, respectively; and  $\text{SE}(\ln RR)$  represents the standard error of natural log of relative risks.

### Statistical analysis

We applied a random-effects model to examine whether there were within- and between-study heterogeneities using the  $I^2$  test [28]. We set  $I^2$  less than 10% as no heterogeneity, 10%–30% as low heterogeneity, 30%–60% as moderate heterogeneity, and more than 60% as high heterogeneity based on Cochrane handbook [29]. We further did subgroup analysis by different characteristics [30], including sex, location, ethnicity,  $PM_{10}$  standard, latency period (first year of study period more than 20 years after operation year of PICs vs. less or equal to 20 years), and bona fide observation (defined as 10 or more years of observation after 20 years of PIC operations vs. less than 10 years). Then, we applied meta-regressions to investigate the possible factors of heterogeneity, including sex, ethnicity, location, year of publication, and the starting year of follow-up. We also conducted sensitivity analyses to assess the influence of individual study on the overall RR by adding one estimate into the pooled estimates gradually. Finally, we used a funnel plot and the Begg's and Egger's regressions for asymmetry test to examine whether there was publication bias and small-study bias. All analyses were performed using the Stata

Software version 11.2 (StataCorp, TX, US). We set the statistical significance level at 0.05, using a two-sided test.

### Assessment of data quality

To assess the risk of bias in each study, the quality of each study was recorded and assessed using the Newcastle-Ottawa Quality Assessment Scale [31]. Records on data quality for each study were reviewed by CK Lin and HY Hung. We evaluated potential bias based on three categories (selection, comparability, and outcome) with eight measurements [31]. Although the discussion on the validity of the Scale remained inconclusive, the reliability of the Scale is quite fair and widely used in meta-analysis [32, 33].

### Air quality standards

Pollutants emitted from PIC might vary over time, likely due to the change of manufacturing process and pollution control technology. Since data on air quality around studied petrochemical areas were limited, we reviewed national or regional ambient air quality standards in studied countries or regions: European Union (EU), Taiwan, and the US. We summarized three air quality standards for studied countries, including total suspended particles (TSP),  $PM_{10}$ , and  $PM_{2.5}$  [34–41].

### Results

Table 1 shows the basic characteristics of studies included in our meta-analysis. A total of 13 study groups were extracted, covering around 2,017,365 people living near petrochemical areas in Taiwan, Louisiana in the US, Teesside, West Glamorgan in the UK, and Brindisi, Sicily, and Rome in Italy. Seven out of 13 study groups reported RRs for males, five for females, and one for both sexes combined. The follow-up years ranged widely from 1960 to 2002. Most PICs operated at least 14 years.

Figure 2 shows the pooled estimate of mortality risk for lung cancer among residents living nearby PICs. The estimated overall RR of 1.03 indicated that lung cancer mortality among residences might be associated with exposure to PICs, but it didn't reach statistical significance (95% CI = 0.98–1.09). Although Belli's study (study ID = H in Fig. 2) reported point estimate of lung cancer risk as high as 3.10, its broad CI ranging from 0.82 to 11.79 led to the smallest weighting factor of 0.17% in our meta-analysis. Among the selected studies, the highest weighting factor of 23.35% (study ID = K in Fig. 2) indicated that Michelozzi's study on males in Rome contributed to the largest proportion of the pooled estimate, mainly because this study had the narrowest CI. The overall  $I^2$  was 25.3%, indicating low heterogeneity existed among these studies.

Table 2 shows the results of pooled estimates and 95% CI by different characteristics, including sex, location,

**Table 1** Basic characteristics of studies included in the meta-analysis

ID	Comparison	Study period	The started operation year of PICs	Adjusted confounders	Country	Definition of petroleum area and reference area	Study group (Number of subject)	Outcome selection	Industrial activity/Substantial chemicals	Study design	Reference
A	Asian males, exposure group vs. reference group	1982–1991	1968 (First–fourth naphtha cracking plants) <sup>b</sup>	Age	Taiwan (32 counties)	Petroleum area: 16 counties with 2% or more of the population employed in petrochemical industrial complexes (PICs) Reference area: 16 matched counties with less than 2% of the population employed in PICs	Exposure group: Residents in 16 petroleum counties (N = 97,853) Reference group: Residents in 16 reference counties (N = 870,758)	Death registered in Bureau of Vital Statistics of the Taiwan Provincial Department of Health; ICD-9 code = 162	Petrochemical manufacturing/ vinyl chloride monomer, polycyclic aromatic hydrocarbons (PAH)	Cohort study	[18]
B	Asian females, exposure group vs. reference group	1982–1991	1968 (First–fourth naphtha cracking plants) <sup>b</sup>	Age	Taiwan (32 counties)						
C	White males, Industrial Corridor vs. Louisiana	1990–1999	< 1970	Age	United States (Louisiana)	Petroleum area: Industrial Corridor, the Mississippi River of South Louisiana (the highest density of petrochemical facilities in the United States) Reference area: Louisiana	Exposure group: White male residents in Industrial Corridor (N = 186,727) <sup>a</sup> Reference group: White male residents in Louisiana (N = 1,385,055) <sup>a</sup>	Death data from the University of Pittsburgh's Mortality and Population Data System; ICD-9 code = 162	Producers of industrial and agricultural organic chemicals, plastics, synthetics, industrial inorganic chemicals/ ammonia, methanol, phosphoric acid, nitrate compounds, formaldehyde, and PAH	Cohort study	[19]
D	White females, Industrial Corridor vs. Louisiana	1990–1999	< 1970	Age	United States (Louisiana)		Exposure group: White female residents in Industrial Corridor (N = 194,376) <sup>a</sup> Reference group: White female residents in Louisiana (N = 1,454,083) <sup>a</sup>				
E	Non-white males, Industrial Corridor vs. Louisiana	1990–1999	< 1970	Age	United States (Louisiana)		Exposure group: Non-white male residents in Industrial Corridor (N = 98,917) <sup>a</sup> Reference group: Non-white male residents in Louisiana (N = 646,311) <sup>a</sup>				
F	Non-white females, Industrial Corridor vs. Louisiana	1990–1999	< 1970	Age	United States (Louisiana)		Exposure group: Non-white female residents in Industrial Corridor (N = 112,079) <sup>a</sup> Reference group: Non-white female residents in Louisiana (N = 734,504) <sup>a</sup>				
G	White males, Residents vs. Commuters	1960–2002	1960 (Gela plant) <sup>c</sup>	Age, calendar period, residence category or job category, and time since first employment	Italy (Sicily)	Petroleum area: A large petrochemical plant built in the vicinity of the town of Gela, Sicily in 1960	Males workers employed in the Gela petrochemical plant in 1960–1993 Exposure group: Residents: workers born in Gela (N = 1684) and in Sicilian municipalities with a probability of commuting defined by the gravity model as <0.5 <sup>a</sup> (N = 709)	Data from municipalities' registry office; ICD-9 code = 162	Oil refinery, thermoelectric power plants, producers of organic and inorganic chemicals/ Ethylene, acrylonitrile, sulfuric acid, ammonia, chlorine urea	Cohort study	[21]

**Table 1** Basic characteristics of studies included in the meta-analysis (Continued)

ID	Comparison	Study period	The started operation year of PICs	Adjusted confounders	Country	Definition of petroleum area and reference area	Study group (Number of subject)	Outcome selection	Industrial activity/Substantial chemicals	Study design	Reference
H	Whites (both genders), exposure group vs. reference group	1996–1997	1961 (Brindisi petrochemical plant) <sup>d</sup>	Age, sex, smoking, and education	Italy (Brindisi)	Petroleum area: The petrochemical plant located in Brindisi	Reference group: Commuters: workers born in Sicilian municipalities, excluding Gela with a probability of commuting defined by the gravity model as $> = 0.5^g$ (N = 32,34) Exposure group: Residents in Brindisi and three neighboring municipalities (Carovigno, Torchiarolo, San Pietro Vernotico) who died from lung cancer (N = 95) Reference group: Random sample of residents in the same area who died from any other disease (N = 170)	Death register in Local Health Authority of Brindisi; ICD-9 code = 162	Petrochemical plant/ NR.	Case-control study	[22]
I	White males, Teesside (zone A,B,C) vs. Sunderland (zone S)	1981–1991	1965 (Teesside refinery) <sup>f</sup>	5-year age group	United Kingdom (Teesside)	Petroleum area: Teesside (one of western Europe's largest steel and petrochemical complexes)	Residents in 19 housing estates in Teesside (zones A,B,C) (N = 77,330) Residents in 8 housing estates in Sunderland (zone S) (N = 43,485)	Death data from the former Northern Regional Health Authority	Petrochemical complex, steel complex, coking, and chemical operations/ NR.	Cohort study	[7]
J	White females, Teesside (zone A,B,C) vs. Sunderland (zone S)	1981–1991	1965 (Teesside refinery) <sup>f</sup>	5-year age group	United Kingdom (Teesside)	Petroleum area: Teesside (one of western Europe's largest steel and petrochemical complexes)	Residents in 19 housing estates in Teesside (zones A,B,C) (N = 77,330) Residents in 8 housing estates in Sunderland (zone S) (N = 43,485)	Death data from the former Northern Regional Health Authority	Petrochemical complex, steel complex, coking, and chemical operations/ NR.	Cohort study	[7]
K	White males, residents living within 10 km circle vs. in Rome	1987–1993	1965 (Rome refinery plant) <sup>e</sup>	5-year age group, four levels of socioeconomic index	Italy (Rome)	Petroleum area: Circle of 10 km radius around the petrochemical refinery which began operation in the early 1960s in the area of Malagrotta, a suburb of Rome	Exposure group: Males living within a 10 km radius of the plants (N = 165,074) Reference group: Males in 6108 census tracts in Rome (N = NR)	Data from the geographical information mortality system; ICD-9 code = 162	Waste disposal, waste incinerators, petrochemical refinery/ Particulates, hydrogen chloride, chlorinated dibenzo-p-dioxins, dibenzofurans, PAH, chlorinated benzene, chlorinated phenols, and phthalates	Cohort study	[8]
L	White females, residents living within 10 km circle vs. in Rome	1987–1993	1965 (Rome refinery plant) <sup>e</sup>	5-year age group, four levels of socioeconomic index	Italy (Rome)	Petroleum area: Circle of 10 km radius around the petrochemical refinery which began operation in the early 1960s in the area of Malagrotta, a suburb of Rome	Exposure group: Females living within a 10 km radius of the plants (N = 176,315) Reference group: Females in 6108 census tracts in Rom (N = NFR)	Data from the geographical information mortality system; ICD-9 code = 162	Waste disposal, waste incinerators, petrochemical refinery/ Particulates, hydrogen chloride, chlorinated dibenzo-p-dioxins, dibenzofurans, PAH, chlorinated benzene, chlorinated phenols, and phthalates	Cohort study	[8]

**Table 1** Basic characteristics of studies included in the meta-analysis (*Continued*)

ID	Comparison	Study period	The started operation year of PICs	Adjusted confounders	Country	Definition of petroleum area and reference area	Study group (Number of subject)	Outcome selection	Industrial activity/Substantial chemicals	Study design	Reference
M	White (both genders) within 3 km vs. England and Wales	1981–1991	1963 (Baglan Bay petrochemical plant)	Age, sex, index of deprivation, and region	United Kingdom (West Glamorgan)	Petroleum area: Circle of 3 km radius centered on the petrochemical plant	Exposure group: Residents living within circle of 3 km radius centered on the petrochemical plant, and death before 74 years old (N = 26,206) Reference group: Residents in England and Wales, and death before 74 years old (N = N.R.)	Death data from the Small Area Health Statistics Unit and 1981 census; ICD-9 code = 162	Baglan Bay Chemicals/Alcohols, styrene, olefins, benzene, vinyl chloride and polyvinyl chloride	Cohort study	[23]

N number of subject, M.R. not reported, ICD International Classification of Diseases

<sup>a</sup>Source of data: 1990 Census of Population: General Population Characteristics, Louisiana. <https://www2.census.gov/library/publications/deennial/1990/cp-1/cp-1-20.pdf> (Accessed 10 Mar 2017)

<sup>b</sup>Source of data: The industrial heritage in Taiwan (In Chinese), National Science and Technology Museum, Taiwan. <http://ht.nstm.gov.tw/form/index-1.asp?m=2&m1=3&m2=7&gp=21&id=7> (Accessed 13 Apr 2017)

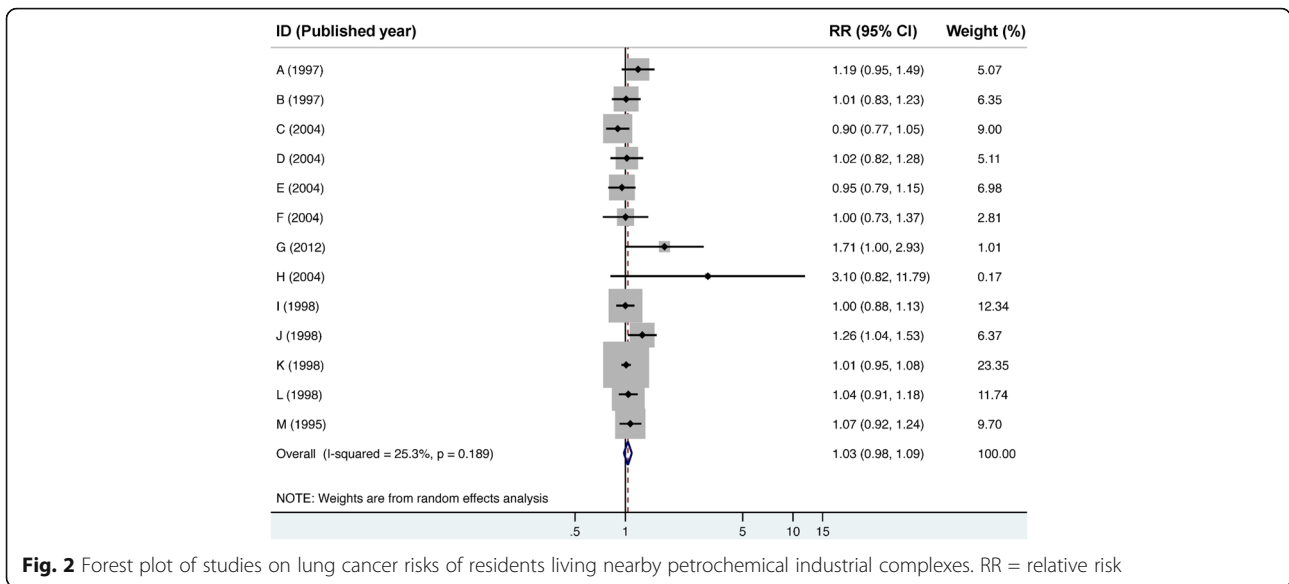
<sup>c</sup>Source of data: Pasetto R, Comba P, Pirastu R. Lung cancer mortality in a cohort of workers in a petrochemical plant: occupational or residential risk? *Int J Occup Environ Health*. 2008;14(2):124–8

<sup>d</sup>Source of data: Petrochimico di Brindisi (1969–1972) (In Italian). Tatiana Schirizzi. <http://www.novefirenze.it/petrochimico-brindisi/> (Accessed 14 Apr 2017)

<sup>e</sup>Source of data: Rome Refinery, A Barrel Full. <http://abarrelfull.wikidot.com/rome-refinery> (Accessed 13 Apr 2017)

<sup>f</sup>Source of data: Teesside Refinery. <https://www.revoly.com/main/index.php?s=Teesside%20Refinery> (Accessed 19 Jul 2017)

<sup>g</sup>Source of data: Signorino G, Pasetto R, Gatto E, Mucciardi M, La Rocca M, Mudu P. Gravity models to classify commuting vs. resident workers. An application to the analysis of residential risk in a contaminated area. *Int J Health Geogr* 2011;10:11



**Fig. 2** Forest plot of studies on lung cancer risks of residents living nearby petrochemical industrial complexes. RR = relative risk

**Table 2** Pooled estimates of relative risks of lung cancer mortality for residents living nearby petrochemical industrial complexes, by different characteristics

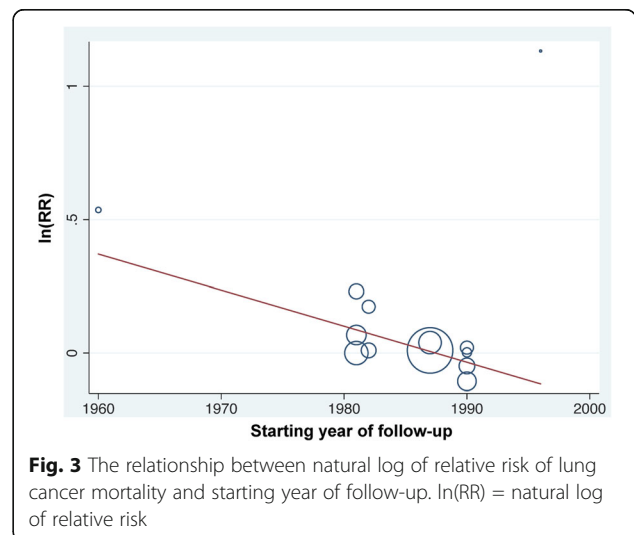
Characteristics	N	Pooled RR (95%CI)	I <sup>2</sup> (%)	p-value
Overall	13	1.03 (0.98–1.09)	25.3	0.236
Sex				
Males	7	1.02 (0.93–1.11)	44.9	0.728
Females	5	1.07 (0.98–1.16)	0	0.137
Location				
Asia	2	1.09 (0.93–1.27)	13.6	0.311
United States	4	0.95 (0.86–1.05)	0	0.302
European Union	7	1.07 (0.98–1.16)	44.6	0.119
Ethnicity				
Asian	2	1.09 (0.93–1.27)	13.6	0.311
White	9	1.04 (0.97–1.12)	41.7	0.280
Non-white	2	0.97 (0.82–1.13)	0	0.666
PM <sub>10</sub>				
PM <sub>10</sub> > 150 µg/m <sup>3</sup>	4	1.12 (0.97–1.29)	54.8	0.117
PM <sub>10</sub> ≤ 150 µg/m <sup>3</sup>	9	1.01 (0.96–1.06)	0	0.724
Latency period				
> 20 years	9	1.00 (0.95–1.05)	25.3	0.990
≤ 20 years	4	1.10 (1.00–1.21)	35.9	0.056
bona fide observation				
≥ 10 years	6	1.01 (0.87–1.16)	39.9	0.929
< 10 years	7	1.04 (0.99–1.09)	6.8	0.115

N numbers of subjects included, RR relative risks

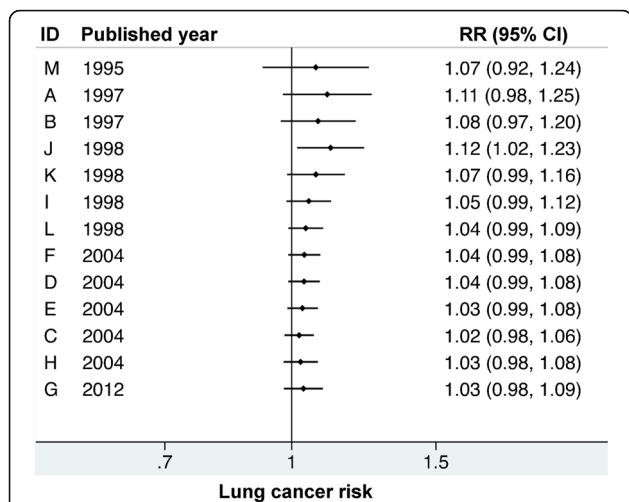
ethnicity, PM<sub>10</sub> standard, latency period, and bona fide observation. For each characteristic, there was no significant difference among pooled estimates between subgroups based on overlapping 95% CIs. However, we found a higher risk of lung cancer associated with residential exposure to PICs in the era of looser PM<sub>10</sub> standard (RR = 1.12, 95% CI = 0.97–1.29 vs. RR = 1.01, 95% CI = 0.96–1.06).

Except for the starting year of follow-up, we did not find any possible heterogeneous factor from the meta-regression analysis. The slope of the meta-regression line suggested that for an increment in the starting year of follow-up, the RR of lung cancer would be 0.874-fold lower (*p*-value = 0.034, Fig. 3).

Figure 4 shows the sensitivity analysis for the effect of individual study on pooled results. We gradually added



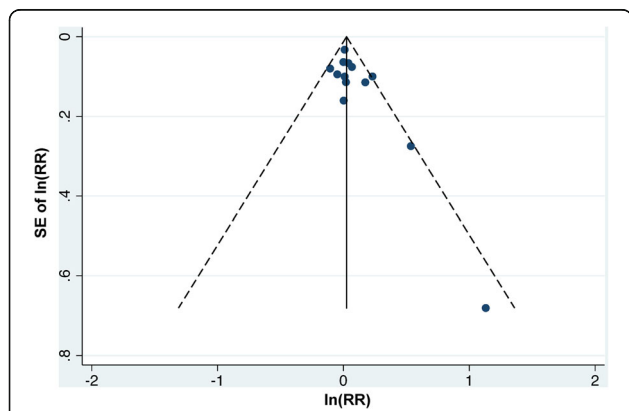
**Fig. 3** The relationship between natural log of relative risk of lung cancer mortality and starting year of follow-up. ln(RR) = natural log of relative risk



**Fig. 4** Sensitivity analysis of random effects estimates after adding each additional study according to the publication year. RR = relative risk

each study into the sensitivity analysis—from studies published in the earlier period to studies published in the later period. None of them significantly affected the pooled results. There was no significant publication bias among the studies for 13 study groups (Egger’s test:  $p$ -value = 0.059; Begg’s test:  $p$ -value = 0.051). The funnel plot also indicated no asymmetry for the estimates for the 13 study groups was observed (Fig. 5).

Additional file 1 listed details of the quality assessment for cohort and case-control study, respectively. All studies reported sex-specific, age-adjusted point estimates. Some studies further adjusted ethnicity, socioeconomic levels (e.g., school levels, job collars categories, unemployment, number of family members, overcrowding, and ownership of dwellings), or study periods. Four studies had full score



**Fig. 5** Funnel plot for lung cancer mortality relative rates associated with residential exposure to petrochemical industrial complexes of the 13 study groups. ln(RR) = Natural log of relative risks; SE of ln(RR) = standard error of natural log of relative risks

of nine stars [18, 21–23]; two had 8 out of 9 stars [7, 8]; and one study had seven out of nine stars [19] (see Additional file 2).

Air quality standards in the EU, Taiwan, and the US were summarized in Fig. 6. The earliest standard of ambient air quality was for TSP, followed by PM<sub>10</sub> and PM<sub>2.5</sub>. All countries have set stricter air quality standards over the years. For example, the standard for annual average TSP concentration was 150 µg/m<sup>3</sup> in the EU in 1983. The EU tightened the regulation by setting up annual PM<sub>10</sub> standard at 60 µg/m<sup>3</sup> in 1996, and then lowering it to 40 µg/m<sup>3</sup> in 1999. In 2008, the EU set up the annual PM<sub>2.5</sub> standard at 25 µg/m<sup>3</sup>. Similarly, the US set the annual TSP standard at 75 µg/m<sup>3</sup> in 1971, and further tightened the limits to 50 µg/m<sup>3</sup> in 1987. In contrast, Taiwan adopted the US’s 1971 standard for TSP and PM<sub>10</sub> and announced the regulation in 1992, but the limits have not been changed since then.

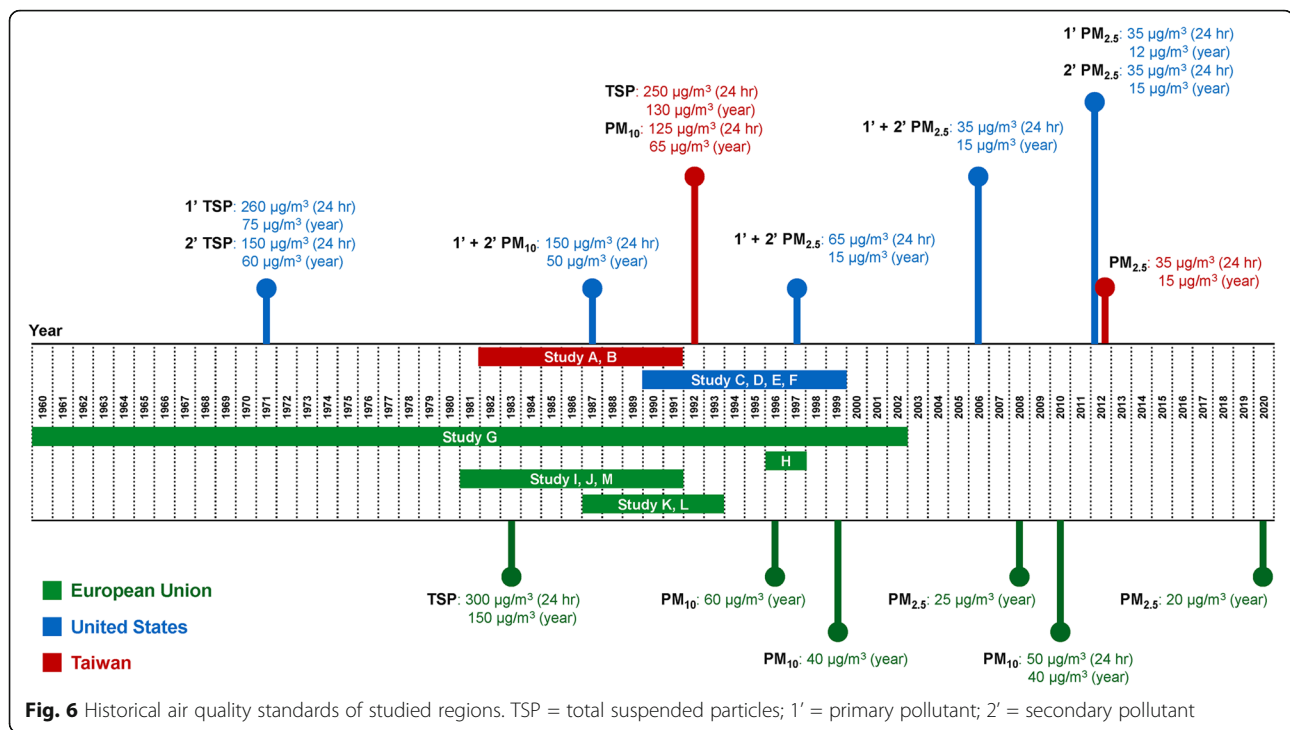
**Discussion**

To our best knowledge, this is the first meta-analysis that estimated the pooled RR of lung cancer mortality for residents living nearby PICs. We aggregated lung cancer risks for 13 study groups from seven published papers in the US, the UK, Italy, and Taiwan. Based on these studies, people living in the PICs had higher lung cancer mortality risks than residents in non-PICs by a factor of 1.03, despite such associations didn’t reach statistically significant (95% CI = 0.98–1.09). Stratification analysis by different characteristics, such as sex and ethnicity, did not change the magnitude of this association. In contrast, the starting year of follow-up affected the association between lung cancer mortality and exposure to PICs by a factor of 0.874. That is, the estimated risk of lung cancer mortality was higher among subjects recruited in earlier periods, and the risk decreased by 12.6% if the year of follow-up started 1 year later.

The scientific evidence of the study is sound and solid from several perspectives. First, the outcome variable was based on pathological samples and/or the ICD-9. Individual data were obtained by linking to governmental database. Second, the large sample size ( $n = 2,017,365$ ) and diverse populations (e.g., by sex, ethnicities, and locations) made the pooled estimate more representative and enhanced the generalizability. Third, by applying the random-effect model, we were able to address the heterogeneity between studies and further reported the pooled effects.

We found higher lung cancer mortality risks among residents near PICs by a factor of 1.03, although this adjusted RR did not reach statistical significance. We identified the following possible limitations of the study. First, the definition of exposure varied slightly between studies. Most studies defined the exposure based on the





geographical locations or distances of residencies from PIC [7, 8, 19, 21–23], while one study compared the exposed group and reference group by matching job categories in PIC and non-PIC towns [18]. Misclassification of exposure and non-exposure might exist and bias the pooled estimates towards the null. Second, the operation of PICs started as early as 1960 and some PICs are still in operation. Exposure to pollutants emitted from PICs might be quantitatively and qualitatively different in each period. Third, although our subgroup analysis didn't show different risks for residents in different latency periods, still not everyone in the selected studies had sufficient latency periods or adequate follow-up period. The estimations on latency period for lung cancer diagnosis varied widely but usually required approximate years to decades [42, 43]. Inadequate inclusion of residents with insufficient latency might bias the result toward the null in the original studies.

An effective air quality intervention involved a series of steps, including regulatory establishments, pollution reductions, and anticipated improvements in health [44]. Although data on ambient pollution monitoring around PICs in the early periods were very limited and hard to obtain, previous studies have documented pollution reductions could be attributable to changing regulations [45, 46]. We could reasonably assume that most petrochemical factories followed the local regulations to some extent. Therefore, the historical air quality standards for TSP, PM<sub>10</sub>, and PM<sub>2.5</sub> could reflect the relative trends of exposure to air pollutants emitted from PICs.

Most air quality standards became stricter over the years [34–37, 41]. Such trend partially explains our findings in the heterogeneity regression; that is, studies on populations with earlier exposure to PICs were associated with significantly higher risk of lung cancer mortality.

There are some limitations need to be addressed when interpreting our results. First, not all potential confounders were adjusted in the seven articles, such as smoking, radon exposure, meteorological factors, and socioeconomic status. However, these unadjusted confounders posed an unknown or even lower risk of lung cancer to the exposure group compared to the reference group. For example, the smoking rate of exposure group was lower than the reference group in Bhopal and colleagues' study [7]. Similarly, people lived in the Industrial Corridor had higher socioeconomic status (less unemployed, higher income, and higher educational attainment) compared to the average of Louisiana [19]. Since lower smoking rate and higher neighborhood socioeconomic status were associated with fewer lung cancer incidence [47, 48], health benefits from the improvement of socioeconomic status along with industrial development were likely to outweigh the negative effects of exposure to the petrochemical industry. The data on radon exposure, as one of the risk factors of lung cancer, were absent in all selected papers. However, there is no evidence of higher radon exposure in PIC areas than non-PIC ones [49, 50]. Similarly, seasonal variations of wind directions might either increase or decrease the effect of PIC exposure on residents' health. Since all studies have

exposure and reference groups from both upwind and downwind locations, subject-selection bias and meteorological effects due to location variance were reduced. Second, studies with available data for meta-analysis were originated from the US, the UK, Italy, and Taiwan. The generalization of the impact of petrochemical industry on lung cancer might be restricted to these countries. However, these four countries represented the majority of countries with the largest petrochemical industries in terms of ethylene production capacity [51], the major base of petrochemicals and a common index to estimate production capacity of a petrochemical company. Third, each PIC might involve other manufacturing processes (such as steel, cocking, and power plants) and the exposure level could also be affected by geographical factors across different countries. Limited by the lack of corresponding exposure data, our findings were not able to address the heterogeneity between PICs. Fourth, certain portion of residents living nearby PICs might risk occupational exposure as well. Some studies have separated the environmental exposure from the occupational exposure (study ID = A, B, G, H) or at least considered job categories in the analysis (study ID = M) to reduce the influence of occupational exposure.

## Conclusions

Our meta-analysis gathering current evidence suggests only a slightly higher risk of lung cancer mortality among residents living nearby PICs. Our analysis also underline the role of stringent regulations on improving air quality and reducing the residential exposure to air pollution, which can further contribute to lowering the risk of lung cancer.

## Additional files

**Additional file 1:** Assessment of study quality using the Newcastle-Ottawa Quality Assessment Scale for cohort and case-control studies. (DOCX 36 kb)

**Additional file 2:** Data quality assessment on the Newcastle-Ottawa Quality Scale. (DOCX 15 kb)

## Abbreviations

CI: Confidence interval; ICD: International Classification of Diseases; PIC: Petrochemical industrial complex; RR: Relative risk; SE: Standard error; SIC: Standard Industrial Classification code; TSP: Total suspended particles

## Acknowledgements

We are grateful to Professor Chung-Cheng Hsieh of the Department of Epidemiology at the Harvard T.H. Chan School of Public Health for his support for methodology of meta-analysis and Professor Jung-Der Wang of the Department of Public Health, College of Medicine at the National Cheng Kung University for his comments on our response letter. We also acknowledge the great support of Professor Andrea Baccarelli of the Department of Environmental Science at Columbia University on air quality regulations in Europe.

## Funding

This research received no financial support from any agency in the public, commercial, or not-for-profit sectors. No funding source or external agency played any role in study design, data collection, data analysis, data interpretation, or writing of this report.

## Availability of data and materials

The datasets used and/or analyzed during the current study are available from the corresponding author on reasonable request.

## Authors' contributions

CKL contributed to study design, data analysis, reporting results, data interpretation, and writing of the manuscript. HYH contributed to literature reviews, data preparation, data interpretation, and writing of the manuscript. DCC and FF contributed to data interpretation and writing of the manuscript. RTL contributed to study design, literature reviews, data interpretation, and writing of the manuscript. All authors read and approved the final manuscript.

## Ethics approval and consent to participate

Not applicable.

## Consent for publication

Not applicable.

## Competing interests

The authors declare that they have no competing interests.

## Publisher's Note

Springer Nature remains neutral with regard to jurisdictional claims in published maps and institutional affiliations.

## Author details

<sup>1</sup>Department of Environmental Health, Harvard T.H. Chan School of Public Health, 665 Huntington Avenue, Building 1, Room 1401, Boston, MA 02115, USA. <sup>2</sup>Department of General Medicine, Kaohsiung Medical University Hospital, No. 100, Tzyou 1st Road, Kaohsiung 807, Taiwan. <sup>3</sup>Department of Epidemiology, Harvard T.H. Chan School of Public Health, 665 Huntington Avenue, Building 1, Room 1401, Boston, MA 02115, USA. <sup>4</sup>Department of Epidemiology Lazio Regional Health Service, Via Cristoforo Colombo, 112 Rome, Italy. <sup>5</sup>Department of Occupational Safety and Health, College of Public Health, China Medical University, 91 Hsueh-Shih Road, Taichung 40402, Taiwan.

Received: 26 May 2017 Accepted: 21 September 2017

Published online: 26 September 2017

## References

1. Wang H, Naghavi M, Allen C, Barber RM, Bhutta ZA, Carter A, et al. Global, regional, and national life expectancy, all-cause mortality, and cause-specific mortality for 249 causes of death, 1980-2015: a systematic analysis for the Global Burden of Disease Study 2015. *Lancet*. 2016;388(10053):1459–544.
2. Doll R, Peto R, Boreham J, Sutherland I. Mortality in relation to smoking: 50 years' observations on male British doctors. *Br Med J*. 2004;328(7455):1519–28.
3. Hecht SS. Tobacco smoke carcinogens and lung cancer. *J Natl Cancer Inst*. 1999;91(14):1194–210.
4. Field RW, Withers BL. Occupational and environmental causes of lung cancer. *Clin Chest Med*. 2012;33(4):681–703.
5. Bilano V, Gilmour S, Moffiet T, d'Espaignet ET, Stevens GA, Commar A, et al. Global trends and projections for tobacco use, 1990-2013: an analysis of smoking indicators from the WHO Comprehensive Information Systems for Tobacco Control. *Lancet*. 2015;385(9972):966–76.
6. Dockery DW, Pope CA, Xu XP, Spengler JD, Ware JH, Fay ME, et al. An association between air pollution and mortality in six U.S. cities. *N Engl J Med*. 1993;329(24):1753–9.
7. Bhopal RS, Moffatt S, Pless-Mulloli T, Phillimore PR, Foy C, Dunn CE, et al. Does living near a constellation of petrochemical, steel, and other industries impair health? *Occup Environ Med*. 1998;55(12):812–22.
8. Michelozzi P, Fusco D, Forastiere F, Ancona C, Dell'Orco V, Perucci CA. Small area study of mortality among people living near multiple sources of air pollution. *Occup Environ Med*. 1998;55(9):611–5.

9. Na K, Kim YP, Moon KC, Moon I, Fung K. Concentrations of volatile organic compounds in an industrial area of Korea. *Atmos Environ*. 2001;35(15):2747–56.
10. Yuan TH, Chio CP, Shie RH, Pien WH, Chan CC. The distance-to-source trend in vanadium and arsenic exposures for residents living near a petrochemical complex. *J Expo Sci Environ Epidemiol*. 2016;26(3):270–6.
11. Cetin E, Odabasi M, Seyfioglu R. Ambient volatile organic compound (VOC) concentrations around a petrochemical complex and a petroleum refinery. *Sci Total Environ*. 2003;312(1–3):103–12.
12. Kalabokas PD, Hatzianestis J, Bartzis JG, Papagiannakopoulos P. Atmospheric concentrations of saturated and aromatic hydrocarbons around a Greek oil refinery. *Atmos Environ*. 2001;35(14):2545–55.
13. Shie RH, Chan CC. Tracking hazardous air pollutants from a refinery fire by applying on-line and off-line air monitoring and back trajectory modeling. *J Hazard Mater*. 2013;261:72–82.
14. Downey L, Van Willigen M. Environmental stressors: the mental health impacts of living near industrial activity. *J Health Soc Behav*. 2005;46(3):289–305.
15. Blot WJ, Fraumeni JF Jr. Geographic patterns of lung cancer: industrial correlations. *Am J Epidemiol* 1976;103(6):539–550.
16. Gottlieb MS, Pickle LW, Blot WJ, Fraumeni JF Jr. Lung cancer in Louisiana: death certificate analysis. *J Natl Cancer Inst* 1979;63(5):1131–1137.
17. Blot WJ, Brinton LA, Fraumeni JF Jr, Stone BJ. Cancer mortality in U.S. counties with petroleum industries. *Science*. 1977;198(4312):51–3.
18. Yang CY, Chiu HF, Chiu JF, Kao WY, Tsai SS, Lan SJ. Cancer mortality and residence near petrochemical industries in Taiwan. *J Toxicol Environ Health*. 1997;50(3):265–73.
19. Tsai SP, Cardarelli KM, Wendt JK, Fraser AE. Mortality patterns among residents in Louisiana's industrial corridor, USA, 1970–99. *Occup Environ Med*. 2004;61(4):295–304.
20. Simonsen N, Scribner R, Su LJ, Williams D, Luckett B, Yang T, et al. Environmental exposure to emissions from petrochemical sites and lung cancer: the lower Mississippi interagency cancer study. *J Environ Public Health*. 2010;2010:759645.
21. Pasetto R, Zona A, Pirastu R, Cernigliaro A, Dardanoni G, Addario SP, et al. Mortality and morbidity study of petrochemical employees in a polluted site. *Environ Health*. 2012;11:34.
22. Belli S, Benedetti M, Comba P, Lagravinese D, Martucci V, Martuzzi M, et al. Case-control study on cancer risk associated to residence in the neighbourhood of a petrochemical plant. *Eur J Epidemiol*. 2004;19(1):49–54.
23. Sans S, Elliott P, Kleinschmidt I, Shaddick G, Pattenden S, Walls P, et al. Cancer incidence and mortality near the Baglan Bay petrochemical works, South Wales. *Occup Environ Med*. 1995;52(4):217–24.
24. United States Cancer Statistics: 1999–2013. Incidence and Mortality Web-based Report <https://nccd.cdc.gov/uscs/toptencancers.aspx>. Accessed 5 Apr 2017.
25. Tsuang MT, Hsieh CC, Fleming JA. Appendix: odds ratio and its interpretation in case-control studies. In: Hsu LKG, Hersen M, editors. *Research in psychiatry*. US: Springer; 1992. p. 125–32. Accessed 5 Apr 2017.
26. Schmidt CO, Kohlmann T. When to use the odds ratio or the relative risk? *Int J Public Health*. 2008;53(3):165–7.
27. Symons MJ, Taulbee JD. Practical considerations for approximating relative risk by the standardized mortality ratio. *J Occup Med*. 1981;23(6):413–6.
28. Higgins JP, Thompson SG, Deeks JJ, Altman DG. Measuring inconsistency in meta-analyses. *Br Med J*. 2003;327(7414):557–60.
29. Jonathan J Deeks, Julian PT Higgins, Altman DG. Identifying and measuring heterogeneity. In: Julian PT Higgins, Green S, editors. *Cochrane handbook for systematic reviews of interventions version 5.1.0*. 2011. <http://handbook-5-1.cochrane.org/>. Accessed 5 Apr 2017.
30. Schabath MB, Cress D, Munoz-Antonia T. Racial and Ethnic Differences in the Epidemiology and Genomics of Lung Cancer. *Cancer Control*. 2016;23(4):338–46.
31. The Newcastle-Ottawa Scale (NOS) for assessing the quality of nonrandomised studies in meta-analyses. [http://www.ohri.ca/programs/clinical\\_epidemiology/oxford.asp](http://www.ohri.ca/programs/clinical_epidemiology/oxford.asp). Accessed 5 Apr 2017.
32. Hootman JM, Driban JB, Sitler MR, Harris KP, Cattano NM. Reliability and validity of three quality rating instruments for systematic reviews of observational studies. *Res Synth Methods*. 2011;2(2):110–8.
33. Hartling L, Hamm M, Milne A, Vandermeer B, Santaguida PL, Ansari M, et al. Validity and inter-rater reliability testing of quality assessment instruments [Internet]. In: *Introduction. Agency for Healthcare Research and Quality*. Rockville, MD; 2012.
34. Particulate matter (PM) standards-table of historical PM NAAQS. [https://www3.epa.gov/ttn/naaqs/standards/pm/s\\_pm\\_history.html](https://www3.epa.gov/ttn/naaqs/standards/pm/s_pm_history.html). Accessed 14 Apr 2017.
35. Air quality standards (In Chinese). <http://law.moj.gov.tw/LawClass/LawAll.aspx?PCode=00020007>. Accessed 14 Apr 2017.
36. European Union. Ambient air quality and cleaner air for Europe (Directive 2008/50/EC). <http://eur-lex.europa.eu/legal-content/EN/TXT/PDF/?uri=CELEX:32008L0050&from=en>. Accessed 14 Apr 2017.
37. European Union. Limit values for sulphur dioxide, nitrogen dioxide and oxides of nitrogen, particulate matter and lead in ambient air (Directive 1999/30/EC). <http://eur-lex.europa.eu/legal-content/EN/TXT/PDF/?uri=CELEX:31999L0030&from=EN>. Accessed 14 Apr 2017.
38. Decreto Legislativo 13 Agosto 2010, n.155 (In Italian). <http://www.minambiente.it/normative/dlgs-13-agosto-2010-n-155-attuazione-della-direttiva-200850ce-relativa-alla-qualita>. Accessed 17 Apr 2017.
39. Decreto Ministeriale 2 Aprile 2002 (In Italian). [http://www.gazzettaufficiale.it/atto/serie\\_generale/caricaDettaglioAtto/originario?atto.dataPubblicazioneGazzetta=2002-04-13&atto.codiceRedazionale=002G0089&elenco30giorni=false](http://www.gazzettaufficiale.it/atto/serie_generale/caricaDettaglioAtto/originario?atto.dataPubblicazioneGazzetta=2002-04-13&atto.codiceRedazionale=002G0089&elenco30giorni=false). Accessed 17 Apr 2017.
40. Decreto Ministeriale 25 Novembre 1994 (In Italian). <http://www.gazzettaufficiale.it/eli/id/1994/12/13/094A7814/sg>. Accessed 17 Apr 2017.
41. Decreto del Presidente del Consiglio dei ministri 28.03.1983 (In Italian). <http://www.arpab.it/aria/normativa/D.P.C.M.28marzo1983.pdf>. Accessed 17 Apr 2017.
42. Howard J: Minimum latency & types or categories of cancer. In *World Trade Center Health Program* 2015.
43. Weiss W. Cigarette smoking and lung cancer trends. A light at the end of the tunnel? *Chest*. 1997;111(5):1414–6.
44. van Erp AM, Kelly FJ, Demerjian KL, Pope CA, Cohen AJ. Progress in research to assess the effectiveness of air quality interventions towards improving public health. *Air Qual Atmos Health*. 2011;5(2):217–30.
45. Hedley AJ, Wong C-M, Thach TQ, Ma S, Lam T-H, Anderson HR. Cardiorespiratory and all-cause mortality after restrictions on sulphur content of fuel in Hong Kong: an intervention study. *Lancet*. 2002;360(9346):1646–52.
46. Clancy L, Goodman P, Sinclair H, Dockery DW. Effect of air-pollution control on death rates in Dublin, Ireland: an intervention study. *Lancet*. 2002;360(9341):1210–4.
47. Hystad P, Carpiano RM, Demers PA, Johnson KC, Brauer M. Neighbourhood socioeconomic status and individual lung cancer risk: evaluating long-term exposure measures and mediating mechanisms. *Soc Sci Med*. 2013;97:95–103.
48. Sidorchuk A, Agardh EE, Aremu O, Hallqvist J, Allebeck P, Moradi T. Socioeconomic differences in lung cancer incidence: a systematic review and meta-analysis. *Cancer Causes Control*. 2009;20(4):459–71.
49. Catalano R, Immè G, Mangano G, Morelli D, Tazzer AR. Indoor radon survey in Eastern Sicily. *Radiat Meas*. 2012;47(1):105–10.
50. Dubois G. An overview of radon surveys in Europe. *European Communities: In. Italy*; 2005.
51. Nakamura D. Ethylene capacity rising, margins continue to suffer. *Oil Gas J*. 2002;100(10):66–79.

Submit your next manuscript to BioMed Central and we will help you at every step:

- We accept pre-submission inquiries
- Our selector tool helps you to find the most relevant journal
- We provide round the clock customer support
- Convenient online submission
- Thorough peer review
- Inclusion in PubMed and all major indexing services
- Maximum visibility for your research

Submit your manuscript at  
[www.biomedcentral.com/submit](http://www.biomedcentral.com/submit)

