

RESEARCH

Open Access



Ovalbumin-sensitized mice have altered airway inflammation to agriculture organic dust

Kristi J. Warren¹, John D. Dickinson¹, Amy J. Nelson¹, Todd A. Wyatt^{3,2,1}, Debra J. Romberger^{2,1} and Jill A. Poole^{1*}

Abstract

Agriculture exposures are associated with reducing the risk of allergy and asthma in early life; yet, repeated exposures later in life are associated with chronic bronchitis and obstructive pulmonary diseases. The objective of this study was to investigate the airway inflammatory response to organic dust extract (ODE) in mice with established ovalbumin (OVA)-induced experimental asthma. C57BL/6 mice were either OVA sensitized/aerosol-exposed or saline (Sal) sensitized/aerosol-challenged. Both groups were then subsequently challenged once with intranasal saline or swine confinement ODE to obtain 4 treatment groups of Sal-Sal, Sal-ODE, OVA-Sal, and OVA-ODE. Airway hyper-responsiveness (AHR) to methacholine, bronchiolar lavage fluid, lung tissues, and serum were collected. Intranasal inhalation of ODE in OVA-treated (asthmatic) mice (OVA-ODE) increased AHR and total cellular influx marked by elevated neutrophil and eosinophil counts. Flow cytometry analysis further demonstrated that populations of CD11c^{hi} dendritic cells (DC), CD3⁺ T cells, CD19⁺ B cells, and NKp46⁺ group 3 innate lymphoid cells (ILC3) were increased in lavage fluid of OVA-ODE mice as compared to ODE or OVA alone. Alveolar macrophages, DC, and T cells were significantly increased with co-exposure to OVA-ODE as compared to OVA alone. Lung ILC2 and ILC3 were only increased in OVA-Sal mice. Cytokine/chemokine levels varied with exposure to OVA-ODE reflecting an additive mixture of the pro- and allergic-inflammatory profiles. Collectively, ODE increased airway inflammatory cells and chemotactic mediator release in allergic (OVA) sensitized mice to suggest that persons with allergy/asthma be identified and warned prior to the occupational exposure of potentially worsening airway disease.

Keywords: Asthma, Lung, Inflammation, Agriculture, Airway disease

Background

Underlying chronic airway inflammatory diseases, such as chronic bronchitis, asthma and obstructive pulmonary disease, are common among rural agricultural workers [1, 2]. In the United States, large, confined animal feeding operations produce complex bioaerosols composed of gram positive and gram negative bacteria, fungal spores, and particulates capable of eliciting pro-inflammatory respiratory responses [3–6]. Several studies define the airway inflammatory response following acute and repetitive complex swine confinement organic dust extracts (ODE) in animal

models. These studies demonstrate neutrophil, macrophage, and lymphocyte influx, airway hyper-responsiveness (AHR), and release of pro-inflammatory cytokines, including tumor necrosis factor (TNF)- α , interleukin (IL)-6, and neutrophil chemoattractants (CXCL1 and CXCL2), which resemble the human disease [7–10].

It is known that early life farming exposures can reduce the development of allergic asthma in children in farming communities [11, 12]. It is also shown that mice instilled with household dust extracts from the homes of rural Amish farmers, prior to and during experimental ovalbumin (OVA) allergic sensitization and challenge, demonstrated reduction in AHR and eosinophilia [13], supportive of the hygiene hypothesis. In contrast, exposures to larger, industrial farming environments (e.g. swine confinements containing over 500 animals per facility) are

* Correspondence: japoole@unmc.edu

¹Pulmonary, Critical Care, Sleep & Allergy Division, Department of Internal Medicine, University of Nebraska Medical Center, 985900 Nebraska Medical Center, Omaha, NE 68198-5910, USA

Full list of author information is available at the end of the article



associated with non-allergic asthma symptoms and self-reported asthma as high as 50% in children [14]. The actual prevalence of asthma among adults engaged in farm work is variable, ranging from 5 to 13% [15, 16]. The “healthy worker effect” has been ascribed the farming industry as it is thought that farmers with poor respiratory health leave the industry whereas those without respiratory health disease remain. In support of this effect, a longitudinal study by Thaon and colleagues [17] demonstrated that *former* farmers had increased doctor-diagnosed asthma (OR 7.51; CI 1.59–35.41) as compared to administrators, whereas *current* farmers had similar risk of doctor-diagnosed asthma (OR 0.93; CI: 0.15–5.81) as compared to administrators. Less is known about the impact of agriculture exposures on those with pre-existing asthma. It has been shown that among farm operators with farm work-related asthma, 33% had asthmatic exacerbations while doing farm work, suggesting that farm exposure is a risk factor for worsening asthma disease [16]. Thus, studies examining the complexities of immune pathogenesis of complex industrial animal farming exposures in allergic airway diseases might be important for preventative and/or therapeutic strategies in identified, at-risk exposed persons.

Animal studies are useful tools to investigate airway inflammatory responses, and in particular, the murine ovalbumin (OVA)-sensitization and challenge protocol is utilized routinely to study experimental allergic asthma. Whereas the organic dust airway inflammatory model resembles a mix of T helper 1 (Th1) and Th17 cell mediated airway inflammatory responses [9, 18], allergic asthma is characterized by a type 2 response involving eosinophils, type 2 helper T (Th2) cells, group 2 innate lymphoid cell (ILC2) influx, with release of type 2 cytokines including IL-4, IL-5, and IL-13 [19–21]. In this study, we hypothesized that ODE would worsen allergic airway inflammatory consequences including AHR, airway cellular influx, and release of type 2 mediators established after OVA sensitization and challenge. To test our hypothesis, C57BL/6 mice were sensitized and challenged with OVA according to a 7-day aerosolized ovalbumin protocol to establish allergic inflammation. This was followed 1 day later by a single inhalation exposure to ODE. We found that ODE treatment potentiated several allergic airway inflammatory indices.

Methods

Organic dust extract (ODE)

Aqueous organic dust extract (ODE) was collected and prepared as previously described [22]. Briefly, settled surface dust samples (~ 3 ft off ground) from swine confinement animal feeding operations (~ 500–700 animals) were collected and 1 g was placed into sterile Hank's Balanced Salt Solution (10 ml; Sigma, St. Louis, MO) [22].

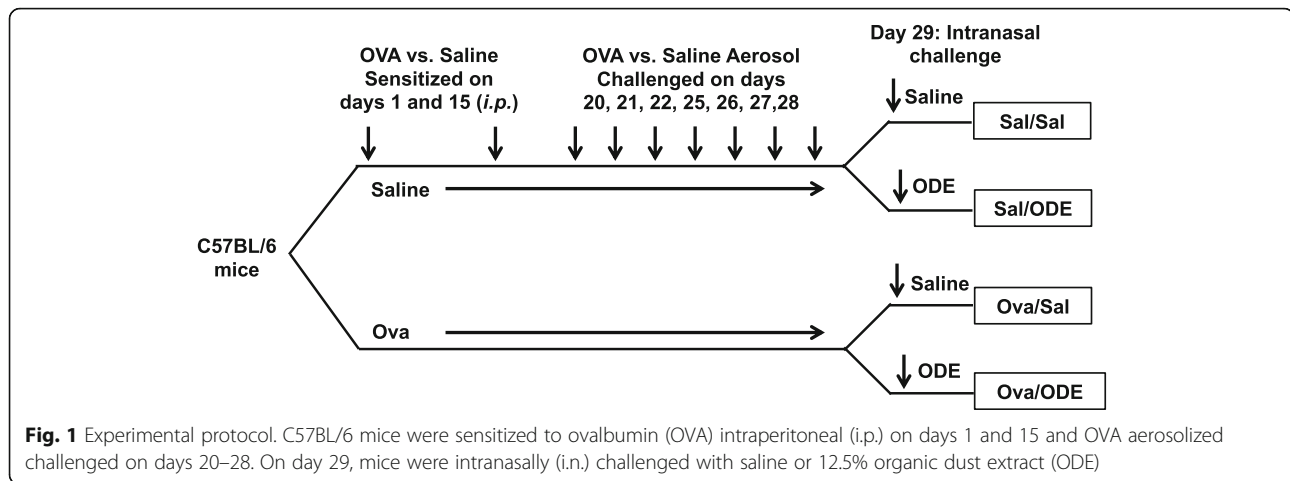
Solution was incubated for one hour at room temperature, centrifuged for 20 min at 2000 x g, and the final supernate was filter sterilized (0.22 µm), a process that also removes coarse particles. Stock (100%) ODE aliquots frozen at – 20 °C until use in experiments and diluted in sterile phosphate buffered saline (PBS; pH: 7.4; diluent) to a final concentration of 12.5% (vol/vol). The 12.5% ODE concentration in 50 µl volume has been previously shown to elicit optimal lung inflammation in mice and is well-tolerated [7]. These diluted extracts contained approximately 4 mg/ml of total protein as measured by nanodrop spectrophotometry (NanoDrop, Thermo Fisher, Waltham, MA). The endotoxin concentration of this 12.5% ODE ranged from 155 to 175 EU/ml as determined by the limulus amebocyte lysate assay according to manufacturer's instructions (Sigma). For reference, a recent study of dairy barns in eastern Colorado found that the geometric mean for endotoxin exposure was 438 EU/m³, with 89% of workers exceeding the recommended adjusted occupational exposure level of 67 EU/m³ [23]. There are no commercially available kits to quantitate gram positive bacterial peptidoglycan levels, but prior shotgun metagenomics analyses of DNA pyrosequencing of dust samples collected from swine facilities revealed a strong presence of gram positive bacteria [3].

Animal model

Male C57BL/6 mice (6–8 wk. old) were purchased from The Jackson Laboratory (Bar Harbor, ME) for consistency with prior agriculture exposure animal modeling studies conducted by us [7, 22, 24] and others. [8–10] All animal procedures were approved by the Institutional Animal Care and Use Committee at the University of Nebraska Medical Center and were in accordance with the NIH guidelines for the use of rodents. Mice were sensitized with 100 µl of chicken egg ovalbumin (Grade V; 500 µg/ml) absorbed with aluminum hydroxide (Sigma, 29 mg/ml) (OVA) intraperitoneal (i.p.) on days 1 and 5, and then challenged with aerosolized 1% OVA on days 20, 21, 22, 25, 26, 27 and 28 for 20 min each day. Saline control animals were injected with saline and saline aerosolized. Next, mice were intranasally (i.n.) treated with 12.5% ODE or saline 4–5 h prior to being sacrificed on day 29 (Fig. 1). Mice were lightly anesthetized by isoflurane inhalation before intranasal inhalation of sterile saline (PBS) or 12.5% ODE per previously established procedure [7].

Pulmonary function measurement

Based upon previous work determining optimal time point to determine ODE-induced inflammatory responses [7], 3 h following the one-time treatment with intranasal inhalation of 12.5% ODE or saline, mice were anesthetized, tracheostomized, and mechanically ventilated at a rate of 160 breaths/min, and tidal volume of 0.15 ml, using



a computerized small animal ventilator (Buxco Finepointe; DSI, St. Paul, MN). Dose-responsiveness to aerosolized methacholine (1.5–24.0 mg/ml) was obtained and results reported as total lung resistance (R_L).

Bronchoalveolar lavage and Cytospin

In separate studies, bronchoalveolar lavage (BAL) fluid was collected using 3 × 1 ml PBS. Total cell numbers from pooled lavages were enumerated by hemacytometer and differential cell counts were determined on cytospin-prepared slides (Cytopro Cyto centrifuge, ELITechGroup, Logan, UT) stained with DiffQuick (Thermo Fisher).

Cytokine/chemokine detection

Cell-free BAL fluid was evaluated for cytokines and chemokines by ELISA. Levels of mediators previously implicated in mediating ODE-induced airway inflammation include TNF- α , IL-6, and the murine neutrophil chemoattractants, CXCL1 and CXCL2, [15] were quantitated by Quantikine ELISAs from R&D Systems (Minneapolis, MN) according to manufacturer's instructions. Levels of cytokines classically associated with allergic disease including IL-4, IL-5, and IL-13 were quantitated using the Ready-SET-go ELISA kits (Affymetrix, Thermo Fisher). Levels of chemokines including CCL2, CCL3, CCL8, CCL11, CCL12, and CCL22, and levels of cytokines including IL-9, IL-17A, IL-17E, and IL-33, were quantitated by murine Luminex multiplex assay from R&D Systems according to manufacturer's instructions.

Serum IgE

Whole blood was collected at time of euthanization from axillary artery and placed in BD Microtainer Tubes (Becton Dickinson, Franklin Lakes, NJ), centrifuged and cell-free serum collected. Serum IgE levels were quantified by ELISA kit (Mouse IgE ELISA Set, BD Biosciences, San Diego, CA) according to the manufacturer's instructions. The serum from the saline treated/saline challenged mice

was diluted 1:2, and serum from the OVA-treated/ODE-challenged mice was diluted 1:20.

Histopathology

Following lung lavage, whole lungs were excised and inflated to 15 cm H₂O pressure with 10% formalin (Sigma) to preserve pulmonary architecture. Lungs were embedded in paraffin and sections (4–5 μ m) were cut and stained with hematoxylin and eosin (H&E). To determine mucus in airway epithelial cells, Muc5ac intracellular levels were detected using UEA1-lectin conjugated with fluorophore 555 nm in separate unstained slides, and nuclei were counterstained with DNA with 4',6 diamidino-2-phenylindole (DAPI) as previously described [25]. Intracellular mucin was assessed by volumetric density analysis using ImageJ software and quantified from images of multiple fields at 20X magnification as previously described [26].

Cell staining and flow cytometry

In separate studies, BAL fluid and whole lung tissues were separately collected and processed for cellular identification by flow cytometry. Whole lung tissues were harvested after the right ventricle was infused with 10 mL of sterile PBS with heparin (1.5 units/ml; Sigma) to remove blood from the pulmonary vasculature. Lung tissues were subjected to an automated dissociation procedure using the gentleMACS tissue dissociator (Miltenyi Biotech, Auburn, CA) as previously described [22]. After passing cell solution through nylon mesh (40 μ m; Fisher) and red blood lysis using a 0.84% (w/v) ammonium chloride treatment (5 min at 4 °C), cells were resuspended in PBS, and lung cells were isolated by density gradient centrifugation over Ficoll-Paque PLUS (GE Healthcare, Chicago, IL). Viability of the lung cells was assessed by trypan blue exclusion and LIVE/DEAD fixable Violet Dead Cell Stain Kit (Life Technologies, Thermo Fisher). Ultimately, less than 1% of gated cells were not viable, with no difference in viability noted between treatment conditions (data not

shown). Total lung cells for each animal were enumerated by the TC20 automated cell counter (Bio-Rad, Hercules, CA).

Bronchoalveolar lavage fluid (BALF) and lung cells from each animal were incubated with CD16/32 (Fc Block, BD Biosciences) to minimize non-specific antibody staining then stained with monoclonal antibodies (mAb) directed against murine CD45 (clone 30-F11), CD3e (clone: 145-2C11), CD19 (clone: ID3), CD11b (clone: M1/70), CD11c (clone: N418), Ly6G (clone 1A8), Siglec⁻F⁺ (clone E50-2440), NK1.1 (clone: PK136), ST2 (clone: RMST2-2), NKp46 (clone 29A1.4), and ICOS (clone: 7E.17G9). CD45, CD3e, CD11b, Siglec F⁺, and ICOS antibodies obtained from BD Biosciences. CD11c, NK1.1, ST2, and CD19 antibody obtained from Affymetrix. Ly6G obtained from BD Pharmingen, and NKp46 obtained from Biolegend (San Diego, CA). Compensation was performed with antibody capture beads (BD Biosciences) stained separately with each individual mAb used in test samples. Cellular data was acquired on the BD Fortessa (BD Biosciences) and subsequently analyzed using Flow Jo software version 9 (Ashland, OR).

All populations were gated by forward- and side-scatter properties characteristic of lymphocytes (SSC-FSC⁺) and granulocytes (SSC⁺FSC^{lo}) and antibody-specific staining fluorescence intensity. The gating strategy after removal of debris, doublets, and selection of CD45⁺ cells was CD3⁺CD19⁻ T cells, CD3⁻CD19⁺ B cells, and CD3⁻CD19⁻CD11c^{hi} conventional DC, SSC⁺Autofluorescence⁺CD11c⁺ macrophages, and CD3⁻NK1.1⁺ natural killer cells (NK cells), CD11c⁻CD11b⁺Siglec⁻F⁺ eosinophils, CD11c⁻Ly6G⁺ neutrophils as previously published [27, 28]. Group 2 innate lymphoid cells (ILC2) were gated as lineage (LIN) negative (CD3⁻CD19⁻CD11b⁻CD11c⁻NK1.1⁻) and inclusion of ICOS⁺ST2⁺, and ILC3 were gated as LIN⁻NKp46⁺. Gating strategy for leukocytes are shown in Additional file 1: Figure S1. The percentage of all respective cell populations were determined from CD45⁺ lung leukocytes, and this percentage was multiplied by the respective total cells acquired from each BALF or whole lung to determine specific cell population numbers for each animal.

Statistical Methods

Data are presented as the mean ± standard error where indicated. To detect significant changes between two groups, statistics were performed using Students t-test or two-tailed, Mann-Whitney test, as appropriate. For experiments with 3 or more groups, one-way analysis of variance (ANOVA) with post-hoc tests (Tukey) was done for multi-comparison within the groups. To analyze the methacholine dose response curves, we used a two-way ANOVA (because there are 2 independent variables: treatment group and dose of methacholine) followed by Mann-Whitney nonparametric test when group

differences were significant, $P < 0.05$. Statistical analysis was performed using GraphPad Prism software (La Jolla, CA) and/or SPSS software (SPSS, Chicago, IL) and significance was set at $P < 0.05$.

Results

Airway hyper-responsiveness in mice co-exposed to ova-allergen and ODE

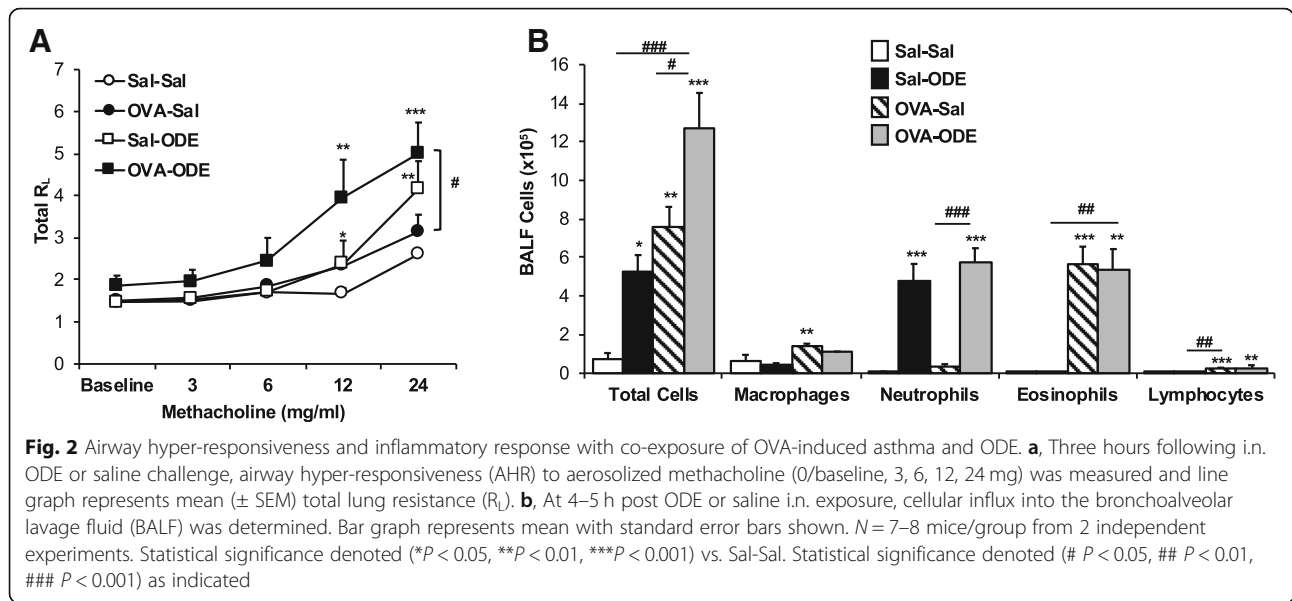
Consistent with previous work [7], ODE exposure alone (Sal-ODE) induced an increase in AHR to methacholine as compared to Sal-Sal control (Fig. 2a). Mice sensitized and challenged with OVA (OVA-Sal) did not demonstrate a significant increase in AHR as compared to Sal/Sal animals. This lack of AHR in C57BL/6 mice OVA sensitized and challenged has been observed by others [29, 30]. However, with co-exposure (OVA-ODE) there were significant increases in AHR at methacholine doses 12 mg/ml ($P < 0.05$) and 24 mg/ml ($P < 0.001$) as compared to Sal-Sal control mice. There was also an increase in AHR in OVA-ODE animals as compared to OVA-Sal at 12 and 24 mg/ml methacholine ($P < 0.05$), suggesting that ODE exposure activates AHR in OVA-treated mice.

Airway inflammatory cell influx with OVA-allergen and ODE

There were significant increases in total cell influx following single exposure to ODE (Sal-ODE), OVA-treatment (OVA-Sal), and co-exposure (OVA-ODE) as compared to saline control (Sal-Sal) ($P < 0.05$; Fig. 2b). Neutrophil influx, but not eosinophilic influx, was increased in Sal-ODE treatment groups compared to the Sal-Sal ($P < 0.001$), which is a characteristic feature of ODE-induced airway inflammation [31]. Macrophages, eosinophils, lymphocytes, but not neutrophils, were significantly increased in the OVA-Sal treatment group in comparison to Sal-Sal group, consistent with experimental allergic asthma in C57BL/6 mice [29, 30]. Airway total cellular influx was significantly increased ($P < 0.05$) in the OVA-ODE co-exposure treatment group as compared to all other treatment groups, and marked by increased numbers of macrophages, eosinophils, neutrophils, and lymphocytes.

Serum IgE levels and lung histopathology with OVA and ODE

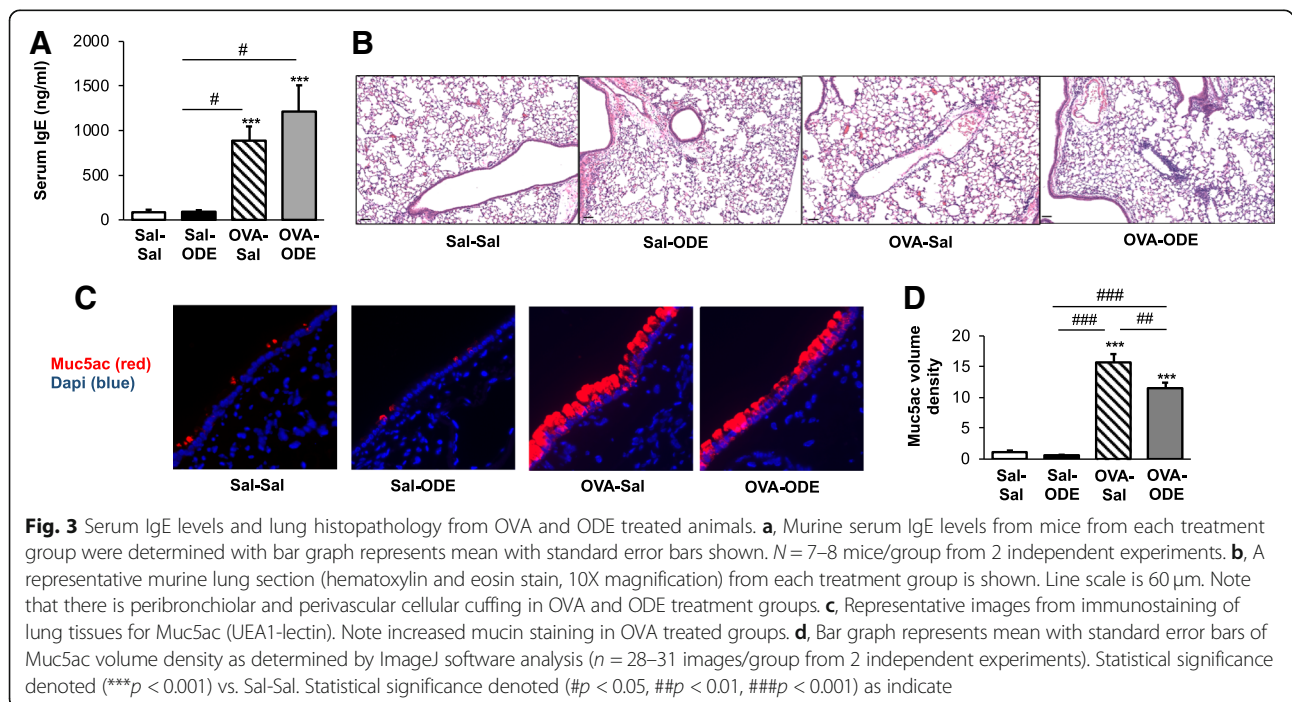
OVA sensitization and challenge (OVA-Sal) resulted in an increase in serum IgE levels, consistent with experimental allergic asthma (Fig. 3a). Mice subsequently challenged with ODE (OVA-ODE), also demonstrated increased serum IgE levels, and there was no difference between OVA-Sal and OVA-ODE. There was also no difference in IgE levels in Sal-ODE versus Sal-Sal treatment animals. By microscopic review, there was evidence of perivascular and peribronchiolar cuffing with infiltration of cells into the lung parenchyma in Sal-ODE, OVA-Sal, and OVA-ODE treatment groups as



compared to Sal-Sa (Fig. 3b). The gel-forming mucin, Muc5ac, is overproduced and secreted by airway epithelial cells in human allergy and allergic mouse models [32]. There was a striking increase in Muc5ac intracellular staining in OVA-Sal and OVA-ODE, but not Sal-ODE, treated mice as compared to Sal-Sal treated animals (Fig. 3c). These observations were confirmed with volume density quantification by ImageJ software analysis (Fig. 3d), and interestingly, there was a slight, but significant decrease in Muc5ac staining in OVA-ODE as compared to OVA-Sal.

Impact of ODE challenge on the recruitment of DC and lymphoid cells in the lavage fluid and lungs of OVA-challenged mice

To further understand the distribution of inflammatory cells, particularly lymphoid cells, recruited to the airways and lungs of mice, separate studies were conducted to phenotype the airway cellular influx by flow cytometry (see [Methods](#) section and Additional file 1: Figure S1). The BAL fluid studies were focused on CD11c^{hi} dendritic cells (DC), total CD3⁺ T cells, CD19⁺ B cells and innate lymphoid cell populations. The OVA allergic mice



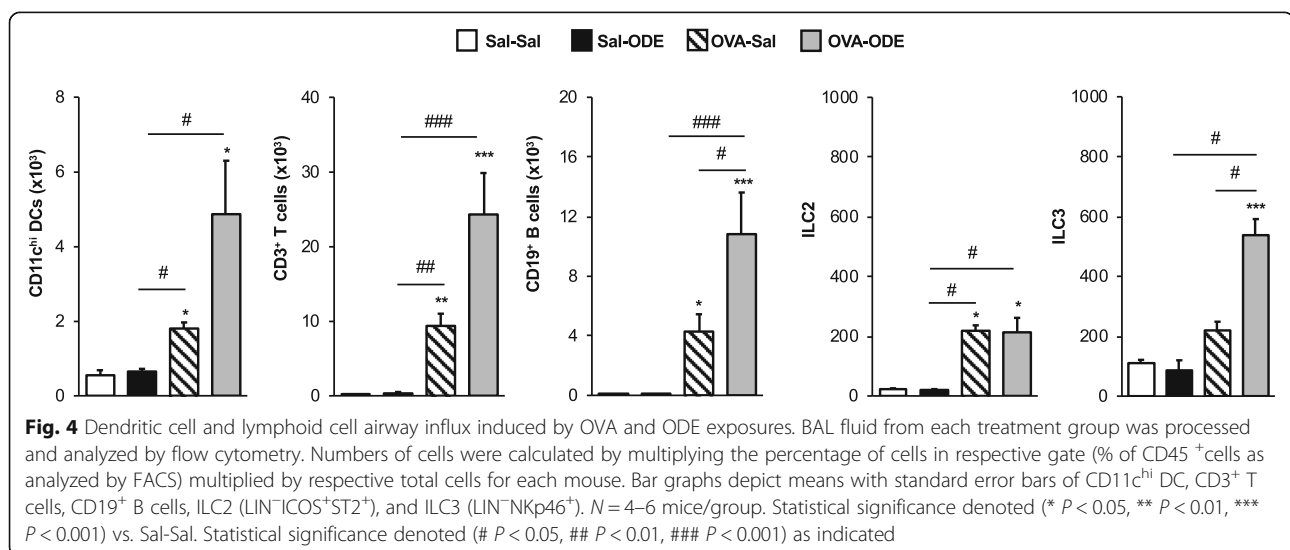
(OVA-Sal) demonstrated significant increases in DC, T cells, B cells, and ILC2 as compared to Sal-Sal control mice (Fig. 4, $P < 0.05$). There was also a significant increase ($P < 0.05$) in the OVA-ODE treatment group as compared to Sal-Sal for DC, T cells, B cells, ILC2, and ILC3. Whereas ODE alone did not impact these cellular populations, there was increased cellular recruitment following ODE exposure in OVA-challenged mice (OVA-ODE), achieving statistical significance for DCs, T cells, B cells and ILC3 in OVA-ODE vs. OVA-Sal groups ($P < 0.05$). Few NK cells were found in the BAL fluid from any treatment groups, and there was no significant difference among groups (data not shown).

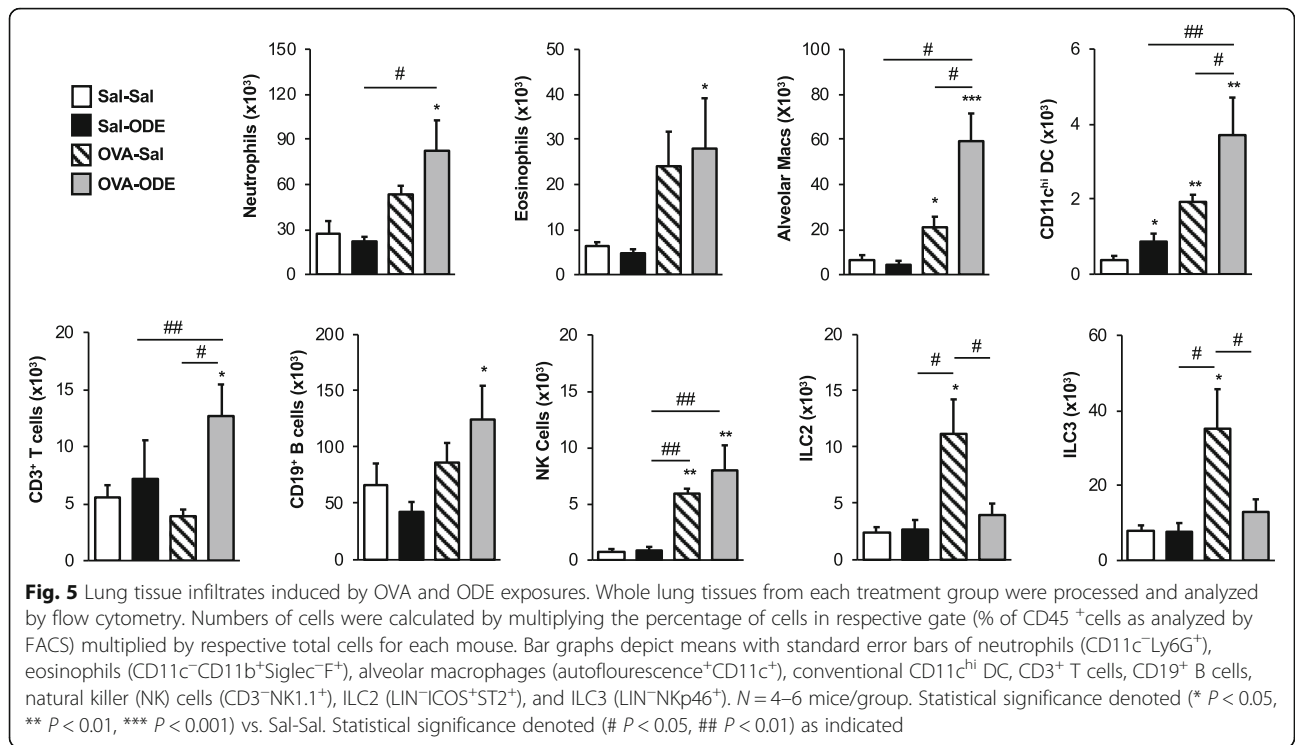
Next, whole lung tissue immune cells from mice were analyzed by flow cytometry (Fig. 5). Significant lung neutrophil infiltration was only noted with co-exposure (OVA-ODE), and not demonstrated with ODE alone (Sal-ODE), suggesting that OVA sensitization/challenged mice were primed for an enhanced ODE-induced lung neutrophil response. Whereas eosinophils were significantly increased in the BAL fluid of OVA-Sal treated mice (Fig. 4), eosinophilic infiltration into the lung tissue was not significantly increased ($P = 0.1$). Lung eosinophil levels were significantly increased in the OVA-ODE treatment group ($P < 0.05$) as compared to Sal-Sal mice. Alveolar macrophages were increased in OVA-Sal mice ($P < 0.05$), and this response was significantly potentiated with co-exposure. Correspondingly, conventional $CD11c^{hi}$ DC were increased in all treatment groups including Sal-ODE, OVA-Sal, and OVA-ODE as compared to Sal-Sal control mice. Additionally, this response was significantly increased ($P < 0.05$) in the OVA-ODE treatment group as compared to OVA or ODE alone. Only the co-exposure (OVA-ODE) treatment group demonstrated significant ($P < 0.05$) increases in lung $CD3^{+}$ T cells and $CD19^{+}$ B cells. Lung innate lymphoid cells also demonstrated

differences among treatment groups. NK cells were increased in both OVA-Sal and OVA-ODE, but increases in ILC2 and ILC3 populations were only found in the OVA-Sal treated mice. Collectively, these support a compartmentalized airway versus interstitial inflammatory response between BAL fluid and whole lung tissue.

Cytokine and chemokine expression varies by independent treatment with OVA, ODE and with co-exposure to ODE and OVA

Because significant differences in airway cellular populations were demonstrated in the murine treatment groups, chemokines implicated in recruitment of various cellular populations and specific cytokines produced by these various populations was investigated [19, 21]. We hypothesized that we would detect a unique cytokine/chemokine profile associated with each treatment group, and that the combination of OVA and ODE exposures would exacerbate allergic inflammation in the form of amplified IL-4, IL-5, IL-13, CCL22 and CCL11. Consistent with prior work [7], we confirmed that a one-time ODE inhalant exposure (Sal-ODE) induces TNF- α , IL-6, and the murine neutrophil chemoattractants, CXCL1 and CXCL2 (Table 1). Furthermore, ODE treatment alone (Sal-ODE treatment group) also induced CCL2 and CCL3, which have also been implicated in neutrophil recruitment [19]. OVA alone (OVA-Sal treatment group) induced IL-4, IL-5, IL-13, CCL3, CCL11, CCL12 and CCL22. IL-4, IL-15, and IL-13 are classic cytokines associated with Th2 allergic inflammation, and CCL3, CCL11, CCL12, and CCL22 are important in lymphocyte, macrophage, and eosinophil recruitment following allergen challenge [19]. In the OVA-ODE co-exposure treatment group, TNF- α , IL-6, IL-4, IL-13, CCL2, CCL3, CCL12, CCL22, CXCL1 and CXCL2 were all significantly increased as





compared to Sal-Sal treatment groups ($P < 0.05$). Of these induced proteins in the OVA-ODE treatment group, IL-6, IL-4, IL-13, CCL12, and CCL22 were increased above levels demonstrated in the Sal-ODE or OVA-Sal treatment groups, suggesting a synergistic response. Interestingly, there was a reduced TNF- α response in the OVA-ODE treatment group as compared to Sal-ODE, and IL-5 and CCL11 were the only

Table 1 Levels of inflammatory cytokines and chemokines in the BAL fluid of mice from treatment groups

Protein	Sal-Sal	Sal-ODE	OVA-Sal	OVA-ODE
TNF- α	31.6 \pm 11.8	471.0 \pm 68.9*	28.4 \pm 11.5	223.7 \pm 36.7*#
IL-6	21.8 \pm 6.3	526.6 \pm 91.7*	24.0 \pm 9.1	1068 \pm 120.2*#
IL-4	1.5 \pm 0.8	0.8 \pm 0.4	3.3 \pm 1.0*	8.1 \pm 3.2*#
IL-5	1.8 \pm 0.6	2.8 \pm 1.0	18.5 \pm 7.8*#	7.1 \pm 2.1
IL-13	0.1 \pm 0.1	0.0 \pm 0.0	14.6 \pm 1.5*#	16.7 \pm 2.4*#
CCL2	9.1 \pm 0.4	36.1 \pm 11.9*	14.5 \pm 3.5	35.7 \pm 17.2*
CCL3	15.0 \pm 10.0	5493 \pm 1065*%	766.1 \pm 339.7*	4878 \pm 1427 *%
CCL11	3.8 \pm 0.5	7.0 \pm 1.7	21.1 \pm 5.9*	14.2 \pm 2.6
CCL12	7.5 \pm 0.3	10.0 \pm 0.6	129.8 \pm 55.3*	231.2 \pm 50.7*#
CCL22	13.5 \pm 2.4	89.7 \pm 35.7	295.0 \pm 118.8*	851.9 \pm 272.3*#
CXCL1	71.5 \pm 19.2	1336 \pm 320.1* %	144.7 \pm 28.7	1037 \pm 307.0*
CXCL2	33.5 \pm 13.3	287.9 \pm 60.3*%	27.2 \pm 14.51	197.0 \pm 37.5*%

Values (pg/ml) are mean \pm standard error of mean. N = 4–8 mice/group. Statistical significance versus Sal-Sal denoted as * ($p < 0.05$); versus Sal-ODE denoted as # ($p < 0.05$) and bolded; versus OVA-Sal % ($p < 0.05$). IL-9, IL-17A, IL-17E, IL-33 and CCL8 were not detected

proteins induced by OVA treatment that were not subsequently amplified by ODE treatment. Levels of IL-9, IL-17A, IL-17E, IL-33, and CCL8 were not detected.

Discussion

Airway inflammatory diseases are common among agricultural workers [2, 15]. In this study, we investigated how an acute inhalant exposure to an agriculture acquired organic dust extract (ODE) would impact lung inflammatory responses in a murine experimental allergic asthma model. Overall, we demonstrated that ODE exposure amplifies several airway inflammatory outcomes. These included enhancement of AHR and a strong diversity in inflammatory cellular influx in the airspace and lung tissues corresponding to increased and diverse chemoattractant release. Collectively, these studies support that allergic asthma primes the lung microenvironment response toward an exaggerated response following dusty farm exposures, and thus, asthma represents an important risk factor to identify in persons prior to the initiation of working in farming operations.

Using a standard OVA sensitization and challenge experimental allergic asthma model, we demonstrated that ODE potentiated, not inhibited, several airway inflammatory parameters once allergic asthma was established. Overall, there was an admixture of inflammatory eosinophils and Th2 cytokines representative of allergic disease plus neutrophils and Th1 cytokines representative of dust exposure that was likely responsible for the

potentiated pathology. As anticipated, airway mucin expression was increased in the allergic animals, but interestingly, there was a significant decrease in the mucin expression following ODE exposure. It is possible that a one-time ODE challenge enhanced the mucus secretion to explain this decrease in intracellular staining for Muc5ac, but further studies would be warranted to fully understand this observation. Although a single exposure to ODE did not impact mucin levels in the airway, it has been demonstrated that repetitive ODE exposure increases Muc5ac expression but that this expression is not at the magnitude seen in experimental allergic asthma models.

AHR in asthma is complex with the central focus on the growth and reactivity of airway smooth muscle, which is presumably stimulated by allergen-induced inflammatory mediators [33]. In non-allergic asthma, neutrophil recruitment [34] and TNF- α [35] can result in AHR, but AHR can also occur independently of neutrophil recruitment or TNF [36]. Heightened Th1 inflammation with interactions between TNF- α and IFN- γ has also been shown to contribute to corticosteroid resistance in airway smooth muscle [37]. We speculate that combination and diversity of inflammatory mediators demonstrated in the co-exposure model contributes to the potentiated AHR. However, future studies could focus on the role of airway smooth muscle cell function in mixed allergic and nonallergic disease triggers focusing on features including contractility, proliferation, and release of extracellular components and mediators that influence bronchoconstriction and bronchodilation to inform future therapeutics.

Albeit at much lower numbers as compared to neutrophils and eosinophils, there was also increased lavage fluid DCs, T cells, B cells, and ILC3 in allergic asthma mice challenged with ODE. These observations in lavage fluid sampling were not entirely consistent with the inflammatory cellular population determined in the lung tissues. OVA mice challenged with ODE did demonstrate the highest numbers of neutrophils, eosinophils, macrophages, T and B lymphocytes among the treatment groups. However, lung tissue ILC2 and ILC3 infiltrates were not increased with co-exposure, and were only elevated in asthmatic mice. NK cells that were essentially absent in the lavage fluid were found in the allergic asthma mice and co-exposed mice, and there was no difference between these groups.

Innate lymphoid cells are increasingly recognized as critical effectors of innate immunity and can play pivotal roles in the initiation, regulation, and resolution of inflammation [38]. ILC2 parallel Th2 lymphocytes with involvement in allergic responses with expression of allergic effector cytokines including IL-4, IL-5, and IL-13 [38]. Thus, the finding that ILC2 were increased in lavage fluids

and lung tissue of allergic asthma mice is anticipated, but ILC2 were not enhanced with ODE exposure. In comparison, ILC3 contribute to bacterial and fungal responses and are also implicated in tissue repair after injury [38]. ILC3 were increased in lung tissues but not lavage fluid of asthmatic mice, and strikingly, this observation was modulated following ODE challenge in asthmatic animals (co-exposure) with increased ILC3 population detected in the lavage fluid but not lung tissue. ODE alone did not impact ILC3 recruitment. The enriched and diverse microbial component nature of ODE [3] could explain the ILC3 response, however, ILC3 recruitment was not observed with ODE exposure alone suggesting that mixed or “two-hit” signals are necessary to engage ILC3. It is possible that in the setting of prolonged/chronic allergy plus dust exposure there might be further involvement of ILC3 responses. NK cells conduct cytotoxic activity and pro-inflammatory cytokine release [38]. It is noted that a one-time ODE exposure did not significantly impact the lung tissue cell infiltrates, except DC, and therefore, the potentiation effect cannot be explained as an additive effect of the co-exposure. The difference between lavage fluid and lung tissue infiltrates could be explained by asthma-induced epithelial cell barrier dysfunction. Disruption of epithelial barrier and leakiness in allergic asthma has been attributed to differences in tight junction structures [39]. ILC2 have been described to breakdown bronchial epithelial barrier integrity [40], and thus, the increased presence of ILC2 infiltrating the lung tissues of the allergic asthma mice may be important for the predisposition to further disease following ODE exposure.

Variations in chemokine responsiveness may also account for the alterations in cellular influx. CCL2 (monocyte chemoattractant protein), CCL3 (macrophage inflammatory protein-1 α), and the murine neutrophil chemoattractants, CXCL1 and CXCL2, were elevated in ODE exposed mice. CCL3, CCL11 (eotaxin), CCL12 (monocyte chemoattractant protein 5), and CCL22 were increased in OVA-challenged mice. These chemokines can recruit and prime eosinophils and Th2 allergic responses [19]. In the co-exposure animals, there was an increase in all chemokines reported, except CCL11, which represents the diversity of cellular populations demonstrated. The potentiated, but not statistically significant, response of CCL12 and CCL22 could explain the heightened lung macrophage and DC response observed with co-exposure. It was also noted that trends were observed with cytokines in co-exposed animals in that TNF- α was reduced, not increased, whereas IL-6 and IL-4 were increased. Further studies could consider potentially isolating specific cell populations to determine polarization and/or cell-specific cytokine/chemokine responsiveness, which might be applicable to future strategies aimed at the development of specific monoclonal therapeutic targeted approaches.

There are limitations to this animal study. Whereas OVA was utilized to elicit allergic asthma due to its widespread use in experimental asthma, OVA is not a natural allergen and future studies could consider use of pollens, dust mites, or molds in modeling allergic asthma. Advantages of using the Th1-dominant C57BL/6 mice is that numerous genetic modifications on this strain background are commercially available to explore future mechanisms and this strain is commonly used in agriculture exposure studies. However, the Th2-dominant BALB/c strain could also be utilized, particularly if AHR is the key endpoint as C57BL/6 mice are more resistant to AHR. Next, agriculture organic dust is complex and comprised of a diverse mixture of gram positive and gram negative microbial components, such that there is not one component (e.g. endotoxin) in the dust that has explained the entirety of the airway disease. Namely, roles for Toll-like receptor 2, 4, 9 and the common adaptor proteins MyD88 and TRIF have been implicated with strongest roles for MyD88 and TRIF [8, 41].

Conclusion

In conclusion, the finding that acute ODE exposure exacerbated lung inflammation in allergic asthmatic mice supports that identifying or screening persons with allergy/asthma prior to occupational exposure in dusty, agriculture environments is warranted. Identification of at-risk persons would allow preemptive workplace warnings or modifications that include strict use of protective respiratory equipment to minimize disease outcomes. Additionally, recognition of the diverse and complex cellular/mediator response in dusty agriculture environments with allergy is necessary to develop strategies aimed at preventative and/or therapeutic approaches.

Additional file

Additional file 1: Figure S1. A representative dot blot of gating strategy. Isolated lung cells were processed and stained as described in *METHODS* section. Populations of cells were selected by characteristic forward and side scatter properties and specific antibody staining fluorescence intensity. Specific staining for CD3⁺ T cells, CD19⁺ B cells, NK cells, DC, ILC2 and ILC3 are shown. (PDF 135 kb)

Abbreviations

AHR: Airway hyper-responsiveness; ANOVA: Analysis of variance; BALF: Bronchoalveolar lavage fluid; DC: Dendritic cells; IL: Interleukin; ILC3: NKp46⁺ group 3 innate lymphoid cells; mAb: Monoclonal antibodies; NK cells: Natural killer cells; ODE: Organic dust extract; OVA: Ovalbumin; OVA-ODE: OVA-treated (asthmatic) mice; Th: T helper; TNF: Tumor necrosis factor

Acknowledgments

The study was also supported by the Fred & Pamela Buffett Cancer Center (Flow Cytometry Research Facility and Tissue Sciences Facility) Shared Resource, supported by the National Cancer Institute under award number P30CA36727. The authors wish to thank members of the Tissue Sciences Facility at the Department of Pathology and Microbiology Department (University of Nebraska Medical Center) for assistance with lung tissue

processing, sectioning, H&E staining, and assistance with digital microscopy images prepared for the manuscript. We thank Elizabeth Staab, Angela Gleason, and Christopher Bauer for technical assistance and Lisa Chudomelka for manuscript submission.

Funding

Study supported by grants from the National Institute of Environmental Health Sciences (R01ES019325 to JAP) and National Institute of Occupational Safety and Health (U54OH010162 to JAP and TAW). This work was also supported by the Central States Center for Agricultural Safety and Health (CS-CASH), pilot feasibility grant. TAW is the recipient of a Research Career Scientist Award (IK6BX003781) from the Department of Veterans Affairs.

Availability of data and materials

Data and material are available to interested scientists upon request of the submitting author, who can be best reached at japool@unmc.edu.

Authors' contributions

KJW contributed to the conceptual design of the investigations, carried out experiments, analyzed data, prepared figures, prepared the manuscript, and edited the manuscript. JDD performed the mucin experiments, captured the images, edited and approved the manuscript. AJN carried out experiments and edited the manuscript. TAW, and DJR contributed to the conceptual design of the investigations and edited the manuscript. JAP contributed to the conceptual design of the investigations, analyzed data, prepared figures, and edited the manuscript. All authors read and approved the final manuscript.

Ethics approval and consent to participate

Animals, All animal procedures were approved by the Institutional Animal Care and Use Committee at the University of Nebraska Medical Center and were in accordance with the NIH guidelines for the use of rodents. *Human participants*, not applicable. *Human data*, not applicable.

Consent for publication

Not applicable.

Competing interests

The authors declare that they have no competing interests.

Publisher's Note

Springer Nature remains neutral with regard to jurisdictional claims in published maps and institutional affiliations.

Author details

¹Pulmonary, Critical Care, Sleep & Allergy Division, Department of Internal Medicine, University of Nebraska Medical Center, 985900 Nebraska Medical Center, Omaha, NE 68198-5910, USA. ²Veterans Affairs Nebraska-Western Iowa Health Care System, Omaha, NE 68105, USA. ³Department of Environmental, Agricultural, and Occupational Health, University of Nebraska Medical Center, Omaha, NE 68198, USA.

Received: 16 November 2018 Accepted: 22 February 2019

Published online: 07 March 2019

References

1. Eduard W, Pearce N, Douwes J. Chronic bronchitis, COPD, and lung function in farmers: the role of biological agents. *Chest*. 2009;136:716–25. <https://doi.org/10.1378/chest.08-2192>.
2. Fontana L, Lee SJ, Capitanelli I, Re A, Maniscalco M, Mauriello MC, Iavicoli I. Chronic obstructive pulmonary disease in farmers: a systematic review. *J Occup Environ Med*. 2017. <https://doi.org/10.1097/JOM.0000000000001072>.
3. Boissy RJ, Romberger DJ, Roughead WA, Weissenburger-Moser L, Poole JA, Levan TD. Shotgun pyrosequencing metagenomic analyses of dusts from swine confinement and grain facilities. *PLoS One*. 2014;9:e95578. <https://doi.org/10.1371/journal.pone.0095578>.
4. Hawley B, Schaeffer J, Poole JA, Dooley GP, Reynolds S, Volckens J. Differential response of human nasal and bronchial epithelial cells upon exposure to size-fractionated dairy dust. *J Toxicol Environ Health A*. 2015;78: 583–94. <https://doi.org/10.1080/15287394.2015.1015699>.
5. Poole JA, Dooley GP, Saito R, Burrell AM, Bailey KL, Romberger DJ, Mehaffy J, Reynolds SJ. Muramic acid, endotoxin, 3-hydroxy fatty acids, and ergosterol

- content explain monocyte and epithelial cell inflammatory responses to agricultural dusts. *J Toxicol Environ Health A*. 2010;73:684–700. <https://doi.org/10.1080/15287390903578539>.
6. Nehme B, Gilbert Y, Letourneau V, Forster RJ, Veillette M, Villemur R, Duchaine C. Culture-independent characterization of archaeal biodiversity in swine confinement building bioaerosols. *Appl Environ Microbiol*. 2009;75:5445–50. <https://doi.org/10.1128/AEM.00726-09>.
 7. Poole JA, Wyatt TA, Oldenburg PJ, Elliott MK, West WW, Sisson JH, Von Essen SG, Romberger DJ. Intranasal organic dust exposure-induced airway adaptation response marked by persistent lung inflammation and pathology in mice. *Am J Physiol Lung Cell Mol Physiol*. 2009;296:L1085–95. <https://doi.org/10.1152/ajplung.90622.2008>.
 8. Charavaryamath C, Janardhan KS, Townsend HG, Willson P, Singh B. Multiple exposures to swine barn air induce lung inflammation and airway hyper-responsiveness. *Respir Res*. 2005;6:50.
 9. Robbe P, Spierenburg EA, Draijer C, Brandsma CA, Telenga E, van Oosterhout AJ, van den Berge M, Luinge M, Melgert BN, Heederik D, Timens W, Wouters IM, Hylkema MN. Shifted T-cell polarisation after agricultural dust exposure in mice and men. *Thorax*. 2014;69:630–7. <https://doi.org/10.1136/thoraxjnl-2013-204295>.
 10. Robbe P, Draijer C, Borg TR, Luinge M, Timens W, Wouters IM, Melgert BN, Hylkema MN. Distinct macrophage phenotypes in allergic and nonallergic lung inflammation. *Am J Physiol Lung Cell Mol Physiol*. 2015;308:L358–67. <https://doi.org/10.1152/ajplung.00341.2014>.
 11. Braun-Fahrlander C, Riedler J, Herz U, Eder W, Waser M, Grize L, Maisch S, Carr D, Gerlach F, Bufe A, Lauener RP, Schierl R, Renz H, Nowak D, von Mutius E. Allergy and Endotoxin study team. Environmental exposure to endotoxin and its relation to asthma in school-age children. *N Engl J Med*. 2002;347:869–77. <https://doi.org/10.1056/NEJMoa020057>.
 12. Ege MJ, Mayer M, Normand AC, Genuiteit J, Cookson WO, Braun-Fahrlander C, Heederik D, Piarroux R, von Mutius E, GABRIELA Transregio 22 study group. Exposure to environmental microorganisms and childhood asthma. *N Engl J Med*. 2011;364:701–9. <https://doi.org/10.1056/NEJMoa1007302>.
 13. Stein MM, Hrusch CL, Gozdz J, Igartua C, Pivniouk V, Murray SE, Ledford JG, Marques dos Santos M, Anderson RL, Metwali N, Neilson JW, Maier RM, Gilbert JA, Holbreich M, Thorne PS, Martinez FD, von Mutius E, Vercelli D, Ober C, Sperling AL. Innate immunity and asthma risk in Amish and Hutterite farm children. *N Engl J Med*. 2016;375:411–21. <https://doi.org/10.1056/NEJMoa1508749>.
 14. Merchant JA, Naleway AL, Svendsen ER, Kelly KM, Burmeister LF, Stromquist AM, Taylor CD, Thorne PS, Reynolds SJ, Sanderson WT, Chrischilles EA. Asthma and farm exposures in a cohort of rural Iowa children. *Environ Health Perspect*. 2005;113:350–6.
 15. Wunschel J, Poole JA. Occupational agriculture organic dust exposure and its relationship to asthma and airway inflammation in adults. *J Asthma*. 2016;53:471–7. <https://doi.org/10.3109/02770903.2015.1116089>.
 16. Mazurek JM, White GE, Rodman C, Schleiff PL. Farm work-related asthma among US primary farm operators. *J Agromedicine*. 2015;20:31–42. <https://doi.org/10.1080/1059924X.2014.976729>.
 17. Thaan I, Thiebaut A, Jochault L, Lefebvre A, Laplante JJ, Dalphin JC. Influence of hay and animal feed exposure on respiratory status: a longitudinal study. *Eur Respir J*. 2011;37:767–74. <https://doi.org/10.1183/09031936.00122209>.
 18. Poole JA, Gleason AM, Bauer C, West WW, Alexis N, Reynolds SJ, Romberger DJ, Kielian T. Alphaseta T cells and a mixed Th1/Th17 response are important in organic dust-induced airway disease. *Ann Allergy Asthma Immunol*. 2012;109:266–273.e2. <https://doi.org/10.1016/j.annal.2012.06.015>.
 19. Aghasafari P, George U, Pidaparti R. A review of inflammatory mechanism in airway diseases. *Inflamm Res*. 2018. <https://doi.org/10.1007/s00011-018-1191-2>.
 20. Warren KJ, Sweeter JM, Pavlik JA, Nelson AJ, Devasure JM, Dickinson JD, Sisson JH, Wyatt TA, Poole JA. Sex differences in activation of lung-related type 2 innate lymphoid cells in experimental asthma. *Ann Allergy Asthma Immunol*. 2017;118:233–4.
 21. Klein E, Weigel J, Buford MC, Holian A, Wells SM. Asymmetric dimethylarginine potentiates lung inflammation in a mouse model of allergic asthma. *Am J Physiol Lung Cell Mol Physiol*. 2010;299:L816–25. <https://doi.org/10.1152/ajplung.00188.2010>.
 22. Poole JA, Mikuls TR, Duryee MJ, Warren KJ, Wyatt TA, Nelson AJ, Romberger DJ, West WW, Thiele GM. A role for B cells in organic dust induced lung inflammation. *Respir Res* 2017;18: 214,017–0703-x doi:<https://doi.org/10.1186/s12931-017-0703-x>.
 23. Davidson ME, Schaeffer J, Clark ML, Magzamen S, Brooks EJ, Keefe TJ, Bradford M, Roman-Muniz N, Mehaffy J, Dooley G, Poole JA, Mitloehner FM, Reed S, Schenker MB, Reynolds SJ. Personal exposure of dairy workers to dust, endotoxin, muramic acid, ergosterol and ammonia on large-scale dairies in the high plains western United States. *J Occup Environ Hyg*. 2017; 0. <https://doi.org/10.1080/15459624.2017.1403610>.
 24. Poole JA, Romberger DJ, Wyatt TA, Staab E, VanDeGraaff J, Thiele GM, Dusaad A, Klassen LW, Duryee MJ, Mikuls TR, West WW, Wang D, Bailey KL. Age impacts pulmonary inflammation and systemic bone response to inhaled organic dust exposure. *J Toxicol Environ Health A*. 2015;1–16. <https://doi.org/10.1080/15287394.2015.1075165>.
 25. Dickinson JD, Sweeter JM, Staab EB, Nelson AJ, Bailey KL, Warren KJ, Jaramillo AM, Dickey BF, Poole JA. MyD88 controls airway epithelial Muc5ac expression during TLR activation conditions from agricultural organic dust exposure. *Am J Physiol Lung Cell Mol Physiol*. 2019;316:L334–47. <https://doi.org/10.1152/ajplung.00206.2018>.
 26. Piccotti L, Dickey BF, Evans CM. Assessment of intracellular mucin content in vivo. *Methods Mol Biol*. 2012;842:279–95. https://doi.org/10.1007/978-1-61779-513-8_17.
 27. Warren KJ, Olson MM, Thompson NJ, Cahill ML, Wyatt TA, Yoon KJ, Loiacono CM, Kohut ML. Exercise improves host response to influenza viral infection in obese and non-obese mice through different mechanisms. *PLoS One*. 2015;10:e0129713.
 28. Warren KJ, Wyatt TA, Romberger DJ, Ailts I, West WW, Nelson AJ, Nordgren TM, Staab E, Heires AJ, Poole JA. Post-injury and resolution response to repetitive inhalation exposure to agricultural organic dust in mice. *Safety*. 2017;3:10.
 29. Reddy AT, Lakshmi SP, Reddy RC. Murine model of allergen induced asthma. *J Vis Exp* 2012;(63):e3771. doi: e3771 doi:<https://doi.org/10.3791/3771>.
 30. Shinagawa K, Kojima M. Mouse model of airway remodeling: strain differences. *Am J Respir Crit Care Med*. 2003;168:959–67. <https://doi.org/10.1164/rccm.200210-1188OC>.
 31. Wells AD, Poole JA, Romberger DJ. Influence of farming exposure on the development of asthma and asthma-like symptoms. *Int Immunopharmacol*. 2014;23:356–63.
 32. Evans CM, Kim K, Tuvim MJ, Dickey BF. Mucus hypersecretion in asthma: causes and effects. *Curr Opin Pulm Med*. 2009;15:4–11. <https://doi.org/10.1097/MCP.0b013e32831da8d3>.
 33. Nair P, Martin JG, Cockcroft DC, Dolovich M, Lemiere C, Boulet LP, O'Byrne PM. Airway Hyperresponsiveness in asthma: measurement and clinical relevance. *J Allergy Clin Immunol Pract*. 2017;5:649–659.e2.
 34. Savov JD, Gavett SH, Brass DM, Costa DL, Schwartz DA. Neutrophils play a critical role in development of LPS-induced airway disease. *Am J Physiol Lung Cell Mol Physiol*. 2002;283:L952–62.
 35. Malaviya R, Laskin JD, Laskin DL. Anti-TNFalpha therapy in inflammatory lung diseases. *Pharmacol Ther*. 2017;180:90–8.
 36. Lefort J, Singer M, Leduc D, Renesto P, Nahori MA, Huerre M, Creminon C, Chignard M, Vargaftig BB. Systemic administration of endotoxin induces bronchopulmonary hyperreactivity dissociated from TNF-alpha formation and neutrophil sequestration into the murine lungs. *J Immunol*. 1998;161: 474–80.
 37. Britt RD Jr, Thompson MA, Sasse S, Pabelick CM, Gerber AN, Prakash YS. Th1 cytokines TNF-alpha and IFN-gamma promote corticosteroid resistance in developing human airway smooth muscle. *Am J Physiol Lung Cell Mol Physiol*. 2019;316:L71–81. <https://doi.org/10.1152/ajplung.00547.2017>.
 38. Stehle C, Hernandez DC, Romagnani C. Innate lymphoid cells in lung infection and immunity. *Immunol Rev*. 2018;286:102–19. <https://doi.org/10.1111/immr.12712>.
 39. Lambrecht BN, Hammad H. The immunology of asthma. *Nat Immunol*. 2015;16:45–56. <https://doi.org/10.1038/ni.3049>.
 40. Sugita K, Steer CA, Martinez-Gonzalez I, Altunbulakli C, Morita H, Castro-Giner F, Kubo T, Wawrzyniak P, Ruckert B, Sudo K, Nakae S, Matsumoto K, O'Mahony L, Akdis M, Takei F, Akdis CA. Type 2 innate lymphoid cells disrupt bronchial epithelial barrier integrity by targeting tight junctions through IL-13 in asthmatic patients. *J Allergy Clin Immunol*. 2018;141:300–310.e11.
 41. Bauer C, Kielian T, Wyatt TA, Romberger DJ, West WW, Gleason AM, Poole JA. Myeloid differentiation factor 88-dependent signaling is critical for acute organic dust-induced airway inflammation in mice. *Am J Respir Cell Mol Biol*. 2013;48:781–9. <https://doi.org/10.1165/rcmb.2012-0479OC>.